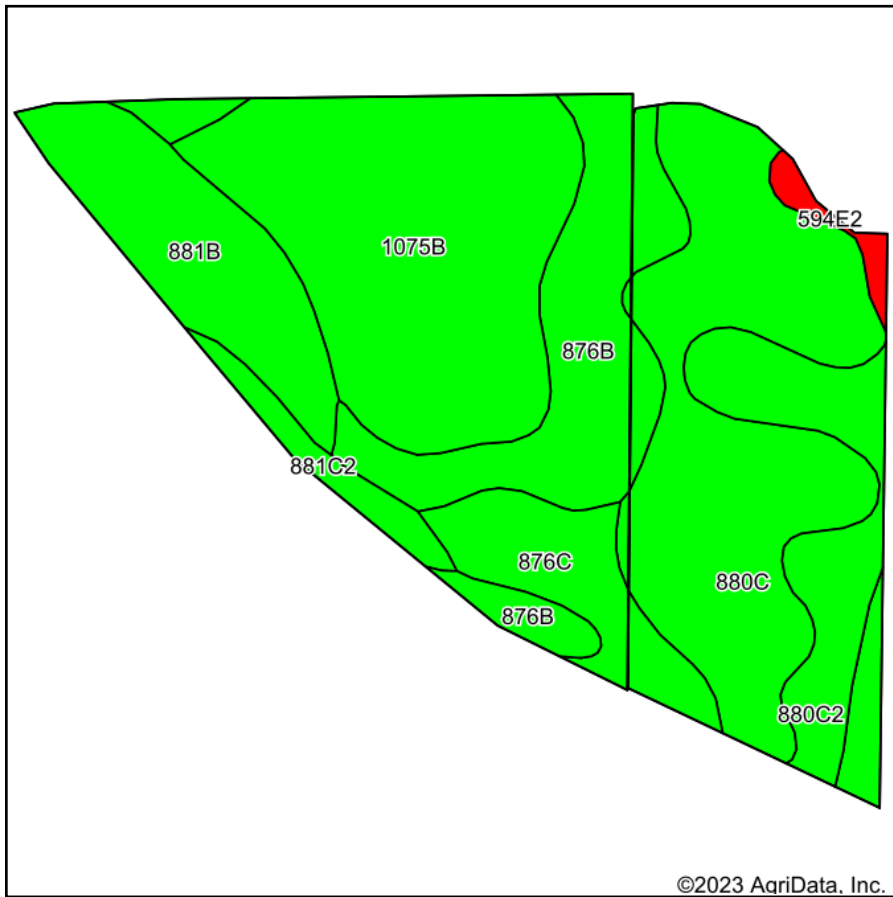
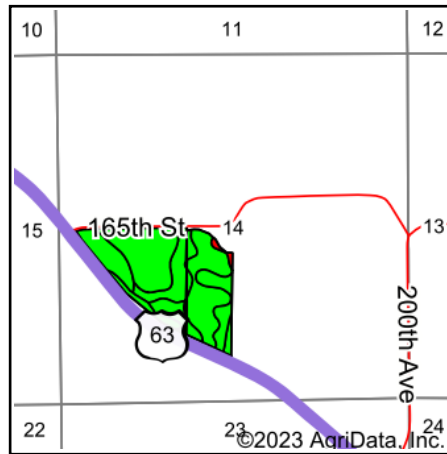


Soils Map



Soils data provided by USDA and NRCS.



State: **Iowa**
 County: **Wapello**
 Location: **14-73N-15W**
 Township: **Columbia**
 Acres: **63.06**
 Date: **10/20/2023**



Maps Provided By:



© AgriData, Inc. 2023

www.AgriDataInc.com



Area Symbol: IA179, Soil Area Version: 31

Code	Soil Description	Acres	Percent of field	CSR2 Legend	Non-Irr Class *c	CSR2**	CSR	Corn Bu	Oats Bu	Soybeans Bu	
1075B	Givin silt loam, benches, 2 to 5 percent slopes	16.43	26.1%		Ile	80	82				
880C	Clinton silt loam, terrace, 5 to 9 percent slopes	16.01	25.4%		IIle	74	65				
876B	Ladoga silt loam, terrace, 2 to 5 percent slopes	10.40	16.5%		Ile	86	85				
881B	Otley silty clay loam, terrace, 2 to 5 percent slopes	6.94	11.0%		Ile	91	90				
880C2	Clinton silt loam, terrace, 5 to 9 percent slopes, eroded	5.65	9.0%		IIle	71	60				
876C	Ladoga silt loam, terrace, 5 to 9 percent slopes	4.36	6.9%		IIle	80	70	4	2	1	
881C2	Otley silty clay loam, terrace, 5 to 9 percent slopes, eroded	1.56	2.5%		IIle	83	70				
S220	Nodaway silt loam, heavy till, 0 to 2 percent slopes, occasionally flooded	1.03	1.6%		IIw	77					
594E2	Galland loam, heavy loess, 14 to 18 percent slopes, moderately eroded	0.68	1.1%		VIe	6	5				
Weighted Average						2.48	79.1	*-	0.3	0.1	0.1

**IA has updated the CSR values for each county to CSR2.

*- CSR weighted average cannot be calculated on the current soils data, use prior data version for csr values.

*c: Using Capabilities Class Dominant Condition Aggregation Method

Soils data provided by USDA and NRCS.