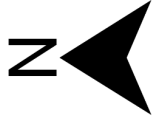


# Rosewood Section 36

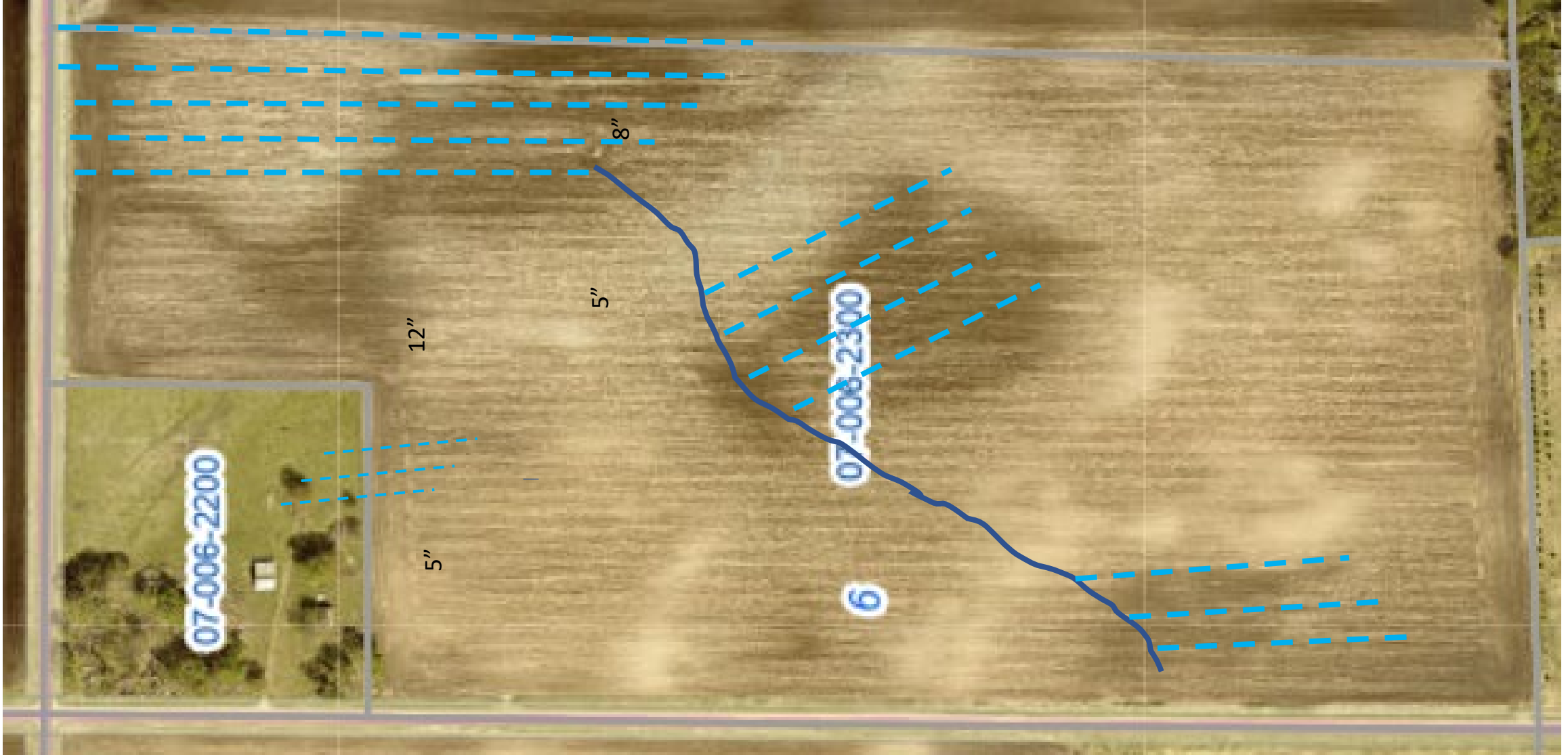
Approximate location of tile shown.  
Solid line is older county tile.  
The east/west tile completed in  
Fall of 2017, 5" and 4",  
approximately 9,000 ft.





# Leenthrop section 6

General location of tile shown, the majority of this was added in 2013



Sparta  
Section 2

Approximate location of tile



# Sparta Section 11

Approximate tile locations. The west ½ was tiled in 2017.

