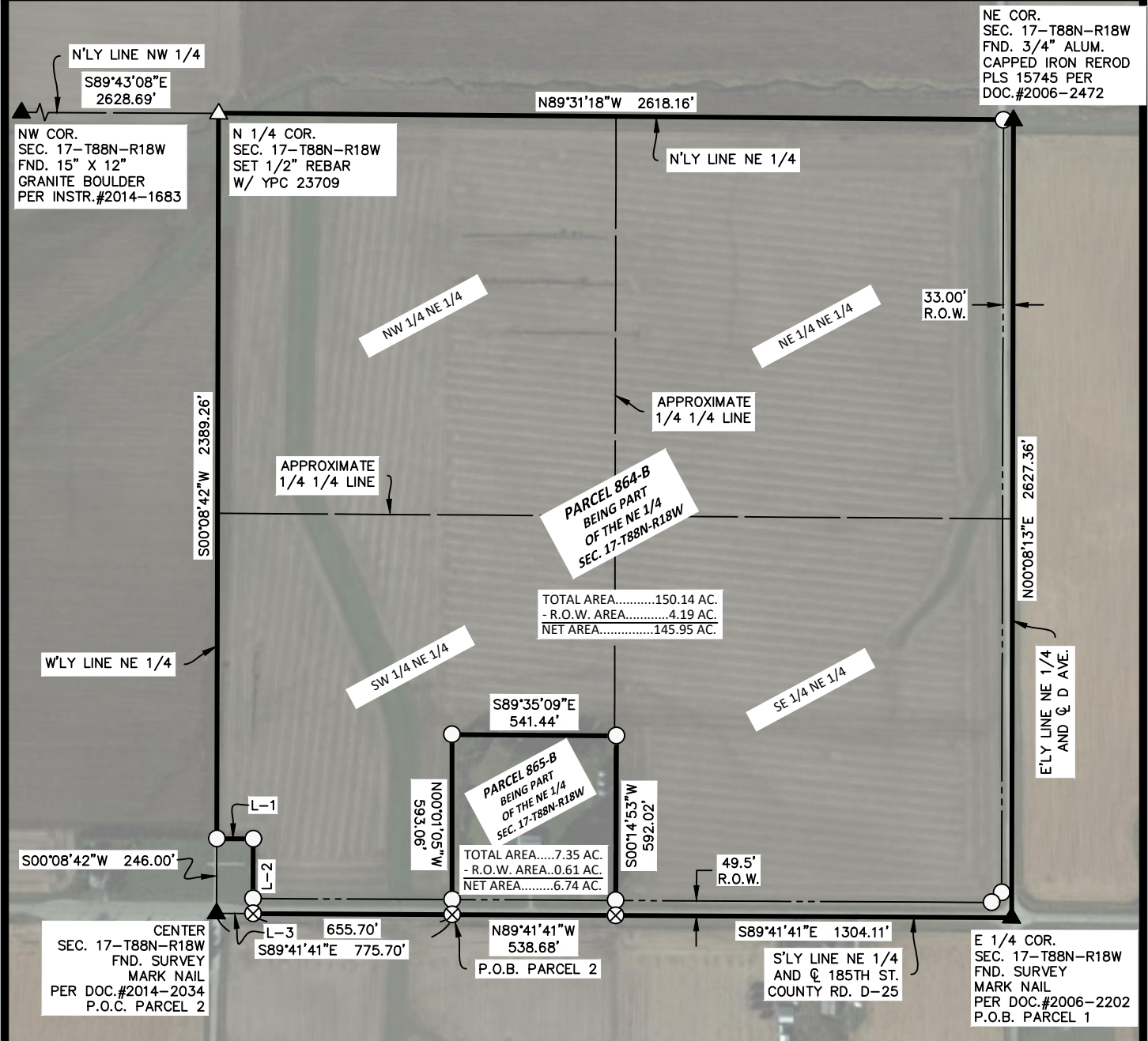


PLAT OF SURVEY



LINE TABLE

L-#	BEARING	LENGTH
L-1	S 89°41'41" E (EAST)	120.00' (120')
L-2	S 00°08'42" W (SOUTH)	246.00' (246')
L-3	S 89°41'41" E (WEST)	120.00' (120')

PARCEL 864-B AREA CALCULATIONS

SW 1/4 NE 1/4
 AREA.....31.63 AC.
 - R.O.W. AREA.....0.75 AC.
 NET AREA.....30.88 AC.

SE 1/4 NE 1/4
 AREA.....39.43 AC.
 - R.O.W. AREA.....2.45 AC.
 NET AREA.....36.98 AC.

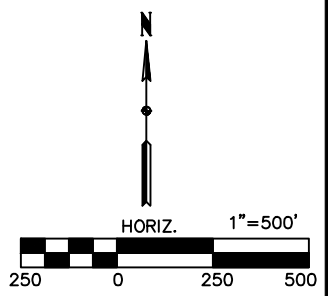
NE 1/4 NE 1/4
 AREA.....39.51 AC.
 - R.O.W. AREA.....0.99 AC.
 NET AREA.....38.52 AC.

NW 1/4 NE 1/4
 AREA.....39.57 AC.

PARCEL 865-B AREA CALCULATIONS

SW 1/4 NE 1/4
 AREA.....7.27 AC.
 - R.O.W. AREA.....0.60 AC.
 NET AREA.....6.67 AC.

SE 1/4 NE 1/4
 AREA.....0.08 AC.
 - R.O.W. AREA.....0.01 AC.
 NET AREA.....0.07 AC.



SURVEYOR'S NOTES:

1) IqRCS ZONE 5 IS THE BASIS OF BEARING FOR THE PURPOSE OF THIS SURVEY.

DOCUMENTS USED FOR THIS SURVEY
 PLATS: DOC.#2006-1973
 CERTS: DOC.#2006-2472, INSTR.#2014-1683, DOC.#2006-2202
 DEED: DOC.#2021-1024, DOC.#20100331, DOC.#214-2034
 EASEMENTS: BK.226 PG.301, BK.217 PG.52

DATE SURVEYED	5-17-23
SCALE:	AS SHOWN
PROJECT NO.:	23248
DRAWN BY:	BVS
CHECKED BY:	BVS
SHEET	2 of 2

LEGEND

- △ SET SECTION CORNER AS NOTED (P.O.C.) POINT OF COMMENCEMENT
- SET 1/2" REBAR 24" LONG YPC 23709 (P.O.B.) POINT OF BEGINNING
- FOUND TBAR MONUMENT UNLESS NOTED (65) LOT NUMBER
- ▲ FOUND SECTION CORNER AS NOTED (0.00') RECORD MEASUREMENT
- ⊗ SET MAG NAIL

STARK
SURVEYING
INC.