

AUCTION

TIMED ONLINE

Farm Retirement

📍 Equipment located at 10191 77th Ave NE, Sarles, North Dakota

OPENS: TUESDAY, OCTOBER 17 / CLOSES: TUESDAY, OCTOBER 24 | 7PM CDT 2023



Auction Includes: 4WD, MFWD & 2WD TRACTORS, COMBINES & HEADS, SELF-PROPELLED SWATHER, DRILLS, PLANTER, TILLAGE, BOX TRUCKS, PICKUP TRUCKS, TRAILERS, GRAIN CART, SPRAYER & SPREADER, GRAIN VAC, AUGERS & CONVEYORS, ROCK PICKER, SCRAPER, BATWING MOWER, SNOW BLOWER, POLY, FIBERGLASS & FUEL TANKS, FORKLIFT, AND MORE!



2002 BUHLER VERSATILE 2425



1995 FORD VERSATILE 9680



2010 NEW HOLLAND T6070 ELITE



1977 JOHN DEERE 4630



INTERNATIONAL 1586



1998 JOHN DEERE 9610 MAXIMIZER



1992 NEW HOLLAND TR96



2014 MACDON M155



F&S HY-TRUX



FLEXI-COIL 5000



WIL-RICH EXCEL



JOHN DEERE 637



2021 BRANDT



LAND PRIDE COMMANDER RCM5014

Ed & Penny Krumwiede. 701.697.5155

CONTACT STEFFES GROUP REPRESENTATIVE / JUSTIN RUTH, 701.630.5583

701.237.9173 | SteffesGroup.com

Steffes Group, Inc., 2000 Main Ave E, West Fargo, ND 58070

Preview:
OCTOBER 17 - OCTOBER 24 FROM 8AM - 5PM
Loadout:
OCTOBER 25 - NOVEMBER 1 FROM 8AM - 5PM



TERMS: All items sold as is where is. Payment of cash or check must be made sale day before removal of items. Statements made auction day take precedence over all advertising. \$35 documentation fee applies to all titled vehicles. Titles will be mailed. Canadian buyers need a bank letter or credit to facilitate border transfer. Scott Steffes ND 81, Justin Ruth ND2019

AUCTION

Farm Retirement

• Sales, North Dakota



CLOSES: TUESDAY, OCTOBER 24 | 7PM
GDT 2023

701.237.9173 | SteffesGroup.com
Steffes Group, Inc., 2000 Main Ave East, West Fargo, ND 58078



Steffes Group, Inc.
2000 Main Ave E
West Fargo, ND 58070

PRESORTED
STANDARD
US POSTAGE
PAID
Permit #315
FARGO, ND



WALINGA 510STD AGRI VAC



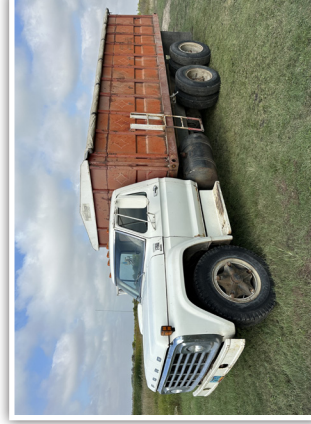
2014 BRANDT GRAIN BELT 1545



2017 WESTFIELD WCX1545FL



1976 FORD F750 CUSTOM



1974 FORD F750 CUSTOM



1974 CHEVROLET C60



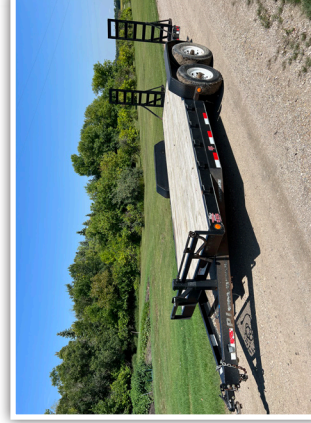
2001 DODGE RAM 2500



WHITEFORKLIFT



2009 JUNCTION RC INC



2014 PJ



O'DAY 10500VP

Ed & Penny Krumwiede. 701.697.5155

CONTACT STEFFES GROUP REPRESENTATIVE / JUSTIN RUTH, 701.630.5583