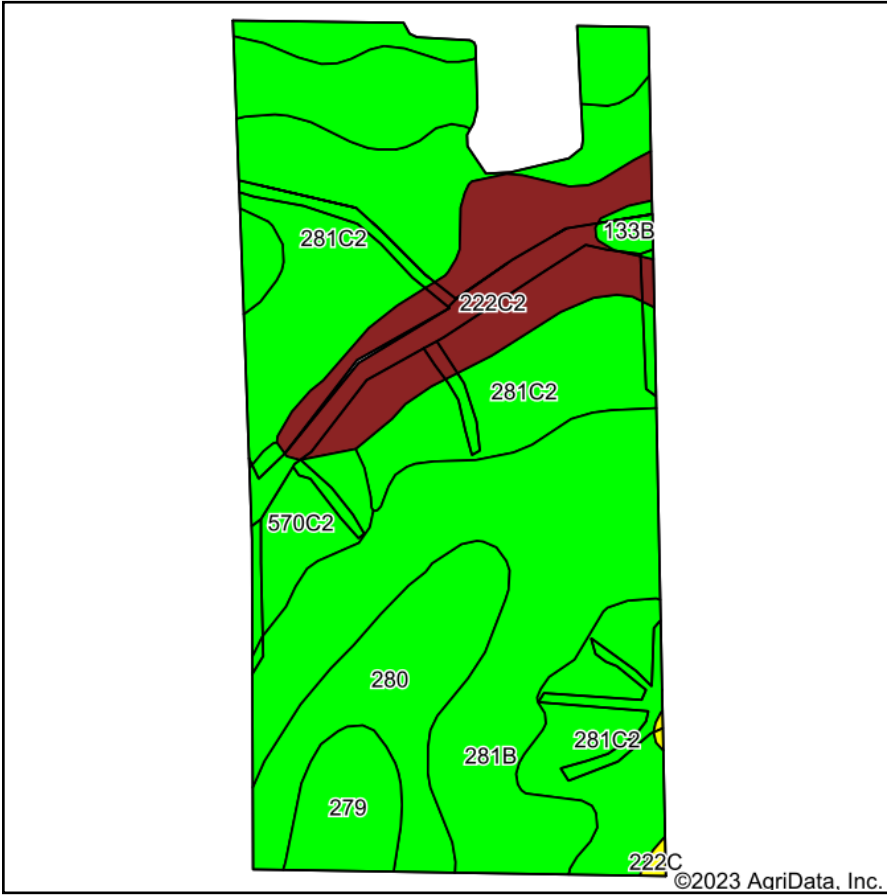
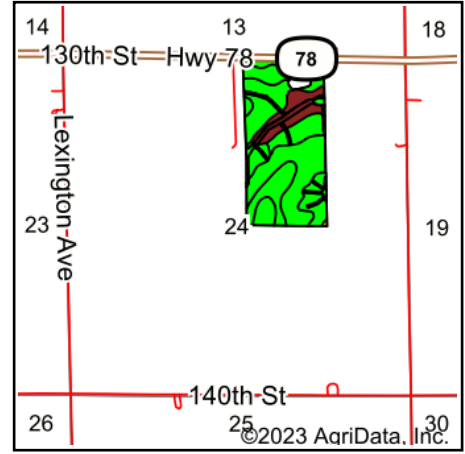


# Soils Map



Soils data provided by USDA and NRCS.



State: **Iowa**  
 County: **Henry**  
 Location: **24-73N-6W**  
 Township: **Wayne**  
 Acres: **72.5**  
 Date: **1/23/2023**



Maps Provided By:



Area Symbol: IA087, Soil Area Version: 27

Code	Soil Description	Acres	Percent of field	CSR2 Legend	Non-Irr Class *c	CSR2**	CSR	
281B	Otley silty clay loam, 2 to 5 percent slopes	24.09	33.2%		Ile	91	90	
281C2	Otley silty clay loam, 5 to 9 percent slopes, eroded	23.51	32.4%		IIle	82	70	
222C2	Clarinda silty clay loam, 5 to 9 percent slopes, moderately eroded	9.12	12.6%		IVw	38	25	
280	Mahaska silty clay loam, 0 to 2 percent slopes	8.93	12.3%		Iw	94	95	
570C2	Nira silty clay loam, 5 to 9 percent slopes, moderately eroded	3.23	4.5%		IIle	73	67	
279	Taintor silty clay loam, 0 to 2 percent slopes	2.92	4.0%		IIw	83	88	
133B	Colo silty clay loam, 2 to 5 percent slopes, occasionally flooded	0.52	0.7%		IIw	75	75	
222C	Clarinda silty clay loam, 5 to 9 percent slopes	0.18	0.2%		IVw	41	30	
<b>Weighted Average</b>						<b>2.50</b>	<b>80.4</b>	<b>74.6</b>

\*\*IA has updated the CSR values for each county to CSR2.

\*c: Using Capabilities Class Dominant Condition Aggregation Method

Soils data provided by USDA and NRCS.