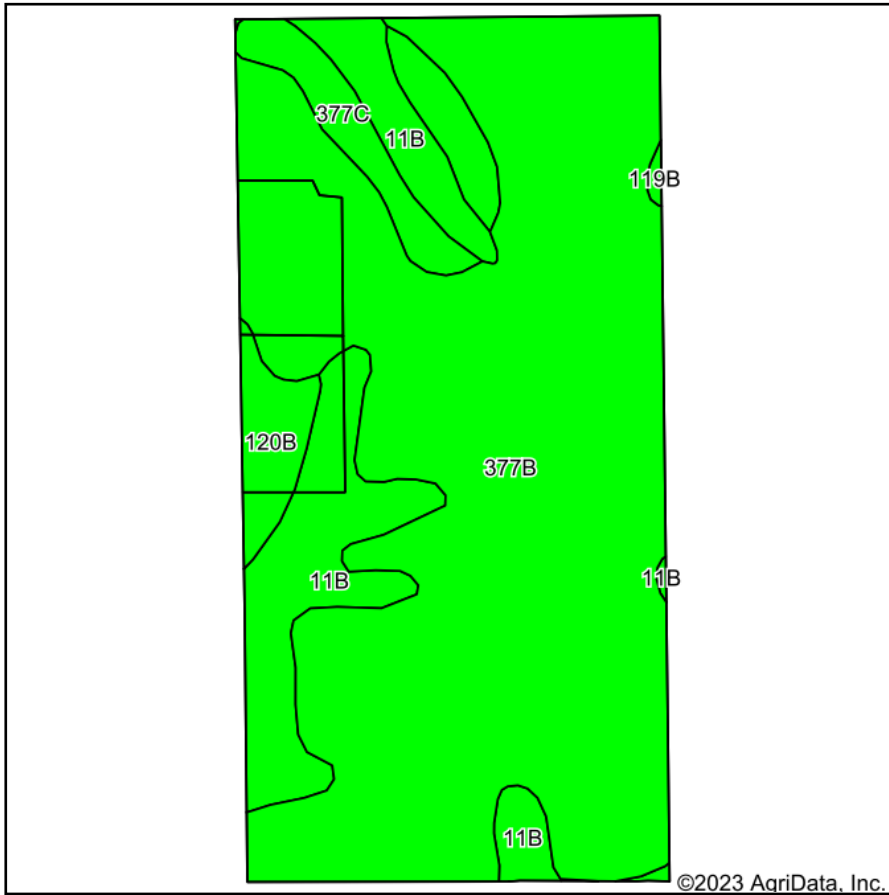
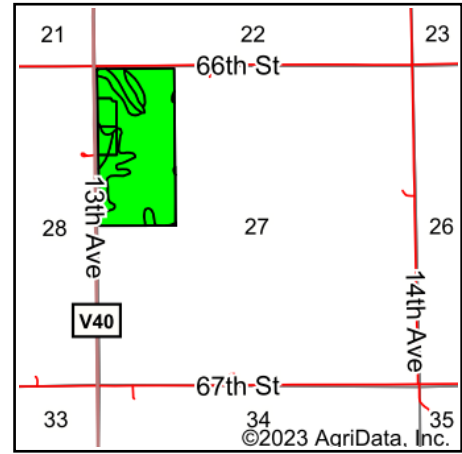


Soils Map



Soils data provided by USDA and NRCS.



State: **Iowa**
 County: **Benton**
 Location: **28-84N-12W**
 Township: **Homer**
 Acres: **75.44**
 Date: **1/3/2023**



Maps Provided By:



© AgriData, Inc. 2021

www.AgriDataInc.com



Area Symbol: IA011, Soil Area Version: 25

Code	Soil Description	Acres	Percent of field	CSR2 Legend	Non-Irr Class *c	CSR2**	CSR	
377B	Dinsdale silty clay loam, 2 to 5 percent slopes	57.61	76.4%		Ile	94	90	
11B	Colo-Ely complex, 0 to 5 percent slopes	10.91	14.5%		IIw	86	68	
377C	Dinsdale silty clay loam, 5 to 9 percent slopes	4.45	5.9%		IIIe	90	75	
120B	Tama silty clay loam, 2 to 5 percent slopes	2.26	3.0%		Ile	95	95	
119B	Muscatine silty clay loam, 2 to 5 percent slopes	0.13	0.2%		Ile	95	95	
428B	Ely silty clay loam, 2 to 5 percent slopes	0.08	0.1%		Ile	88	88	
Weighted Average						2.06	92.6	86.1

**IA has updated the CSR values for each county to CSR2.

*c: Using Capabilities Class Dominant Condition Aggregation Method

Soils data provided by USDA and NRCS.