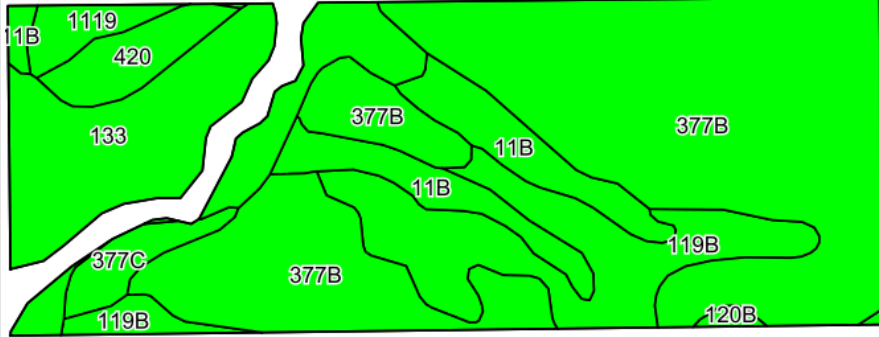
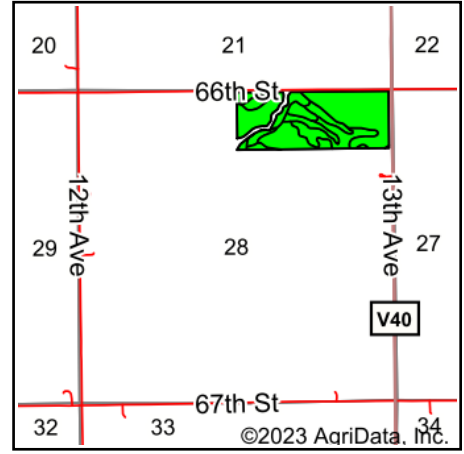


# Soils Map



©2023 AgriData, Inc.

Soils data provided by USDA and NRCS.



State: **Iowa**  
 County: **Benton**  
 Location: **28-84N-12W**  
 Township: **Homer**  
 Acres: **54.73**  
 Date: **1/3/2023**



Maps Provided By:  
  
 CUSTOMIZED ONLINE MAPPING  
 © AgriData, Inc. 2021 www.AgriDataInc.com



Area Symbol: IA011, Soil Area Version: 25

Code	Soil Description	Acres	Percent of field	CSR2 Legend	Non-Irr Class *c	CSR2**	CSR	
377B	Dinsdale silty clay loam, 2 to 5 percent slopes	28.14	51.4%		Ile	94	90	
133	Colo silty clay loam, 0 to 2 percent slopes, occasionally flooded	9.44	17.2%		IIw	78	80	
119B	Muscatine silty clay loam, 2 to 5 percent slopes	7.84	14.3%		Ile	95	95	
11B	Colo-Ely complex, 0 to 5 percent slopes	4.86	8.9%		IIw	86	68	
420	Tama silty clay loam, terrace, 0 to 2 percent slopes	1.84	3.4%		I	100	100	
377C	Dinsdale silty clay loam, 5 to 9 percent slopes	1.29	2.4%		IIIe	90	75	
1119	Muscatine silty clay loam, terrace, 0 to 2 percent slopes	1.08	2.0%		Iw	100	100	
120B	Tama silty clay loam, 2 to 5 percent slopes	0.24	0.4%		Ile	95	95	
<b>Weighted Average</b>						<b>1.97</b>	<b>90.9</b>	<b>87.2</b>

\*\*IA has updated the CSR values for each county to CSR2.

\*c: Using Capabilities Class Dominant Condition Aggregation Method

Soils data provided by USDA and NRCS.