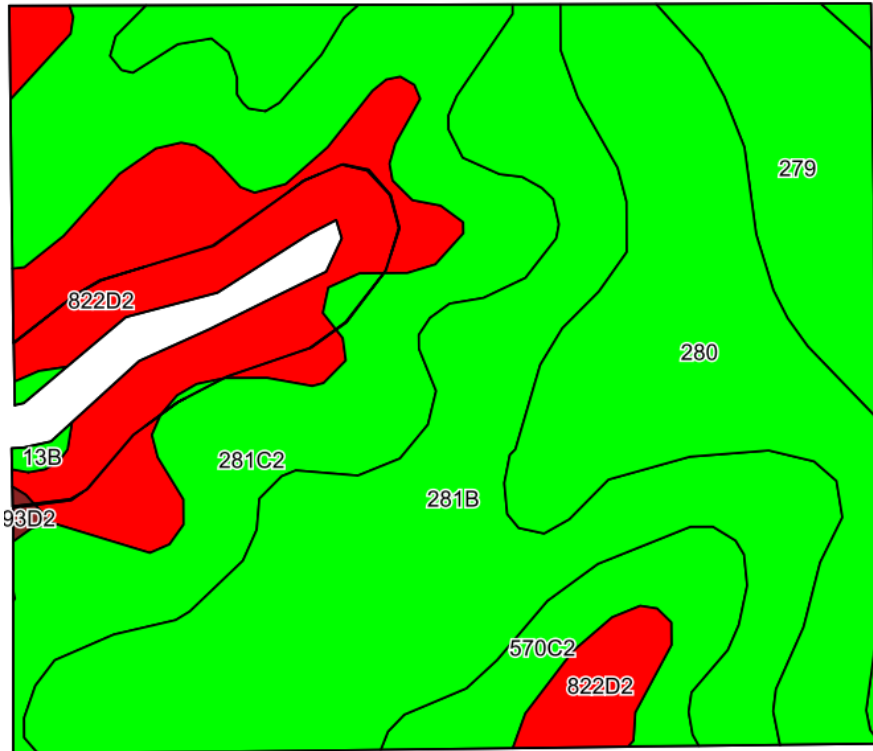
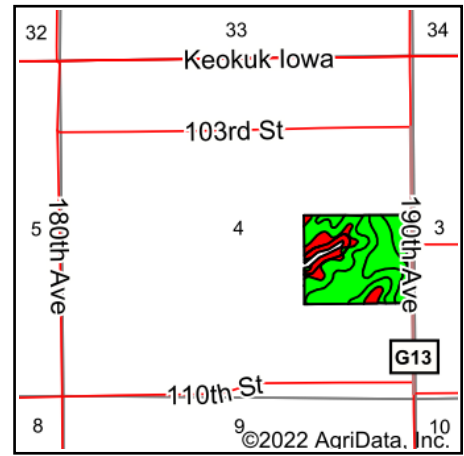


# Soils Map



©2022 AgriData, Inc.

Soils data provided by USDA and NRCS.



State: **Iowa**  
 County: **Keokuk**  
 Location: **4-77N-12W**  
 Township: **Adams**  
 Acres: **45.51**  
 Date: **11/22/2022**



Maps Provided By:



© AgriData, Inc. 2021

www.AgriDataInc.com



Area Symbol: IA107, Soil Area Version: 27

Code	Soil Description	Acres	Percent of field	CSR2 Legend	Non-Irr Class *c	CSR2**	CSR
281B	Otley silty clay loam, 2 to 5 percent slopes	14.17	31.1%		Ile	91	90
281C2	Otley silty clay loam, 5 to 9 percent slopes, eroded	9.73	21.4%		IIle	82	70
280	Mahaska silty clay loam, 0 to 2 percent slopes	8.27	18.2%		Iw	94	95
822D2	Lamoni silty clay loam, 9 to 14 percent slopes, moderately eroded	7.32	16.1%		IVe	13	15
279	Taintor silty clay loam, 0 to 2 percent slopes	3.45	7.6%		IIw	83	88
570C2	Nira silty clay loam, 5 to 9 percent slopes, moderately eroded	2.34	5.1%		IIIe	71	67
13B	Olmitz-Zook-Vesser complex, 0 to 5 percent slopes	0.16	0.4%		IIw	71	60
93D2	Shelby-Adair complex, 9 to 14 percent slopes, moderately eroded	0.07	0.2%		IIIe	35	35
Weighted Average					2.41	75.3	73

\*\*IA has updated the CSR values for each county to CSR2.

\*c: Using Capabilities Class Dominant Condition Aggregation Method

Soils data provided by USDA and NRCS.