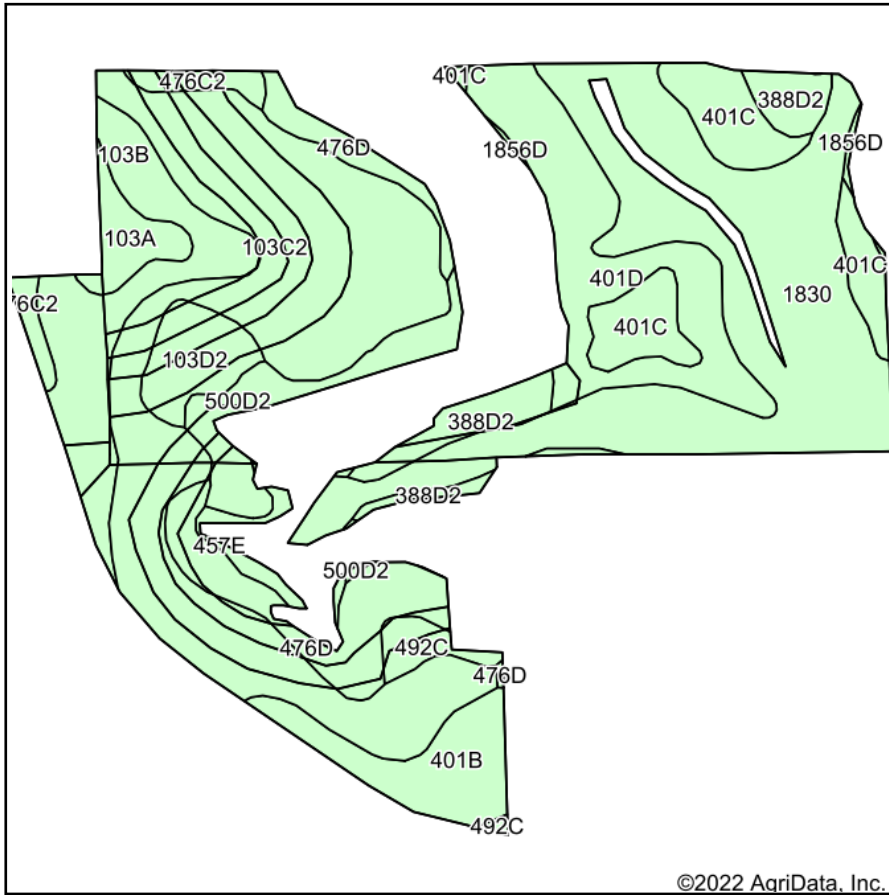
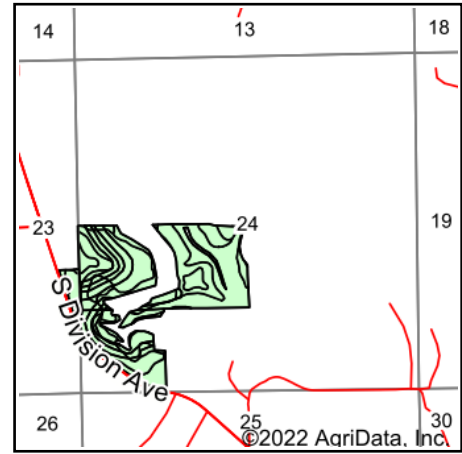


Soils Map



Soils data provided by USDA and NRCS.



State: **Minnesota**
 County: **Houston**
 Location: **24-101N-7W**
 Township: **Spring Grove**
 Acres: **88.21**
 Date: **11/9/2022**



Maps Provided By:

 CUSTOMIZED ONLINE MAPPING
 © AgriData, Inc. 2021 www.AgriDataInc.com



Area Symbol: MN055, Soil Area Version: 17

Code	Soil Description	Acres	Percent of field	Non-Irr Class *c	Productivity Index
103C2	Seaton silt loam, driftless ridge, 6 to 12 percent slopes, moderately eroded	23.99	27.2%	IIIe	71
1830	Eitzen silt loam, occasionally flooded	20.48	23.2%	IIw	91
401D	Mt. Carroll silt loam, 12 to 20 percent slopes, moderately eroded	8.22	9.3%	IVe	67
103B	Seaton silt loam, driftless ridge, 2 to 6 percent slopes	6.82	7.7%	IIe	85
476D	Frankville silt loam, 12 to 20 percent slopes	5.67	6.4%	IVe	43
401C	Mt. Carroll silt loam, 6 to 12 percent slopes, moderately eroded	5.29	6.0%	IIIe	80
401B	Mt. Carroll silt loam, 2 to 6 percent slopes, moderately eroded	3.84	4.4%	IIe	90
388D2	Churchtown silt loam, 12 to 20 percent slopes, moderately eroded	3.22	3.7%	IVe	62
500D2	Edmund silt loam, 12 to 20 percent slopes, eroded	3.19	3.6%	VIe	21
103D2	Seaton silt loam, driftless ridge, 12 to 20 percent slopes, moderately eroded	2.43	2.8%	IVe	62
103A	Seaton silt loam, driftless ridge, 1 to 3 percent slopes	1.64	1.9%	IIe	90
476C2	Frankville silt loam, 6 to 12 percent slopes, eroded	1.32	1.5%	IIIe	55
492C	Nasset silt loam, 6 to 12 percent slopes	1.08	1.2%	IIIe	77
457E	Lacrescent flaggy silt loam, 20 to 35 percent slopes	0.86	1.0%	VIIe	3
1856D	Plainfield loamy fine sand, loamy substratum, 12 to 25 percent slopes	0.16	0.2%	VIIs	27
Weighted Average				3.00	73

*c: Using Capabilities Class Dominant Condition Aggregation Method
 Soils data provided by USDA and NRCS.