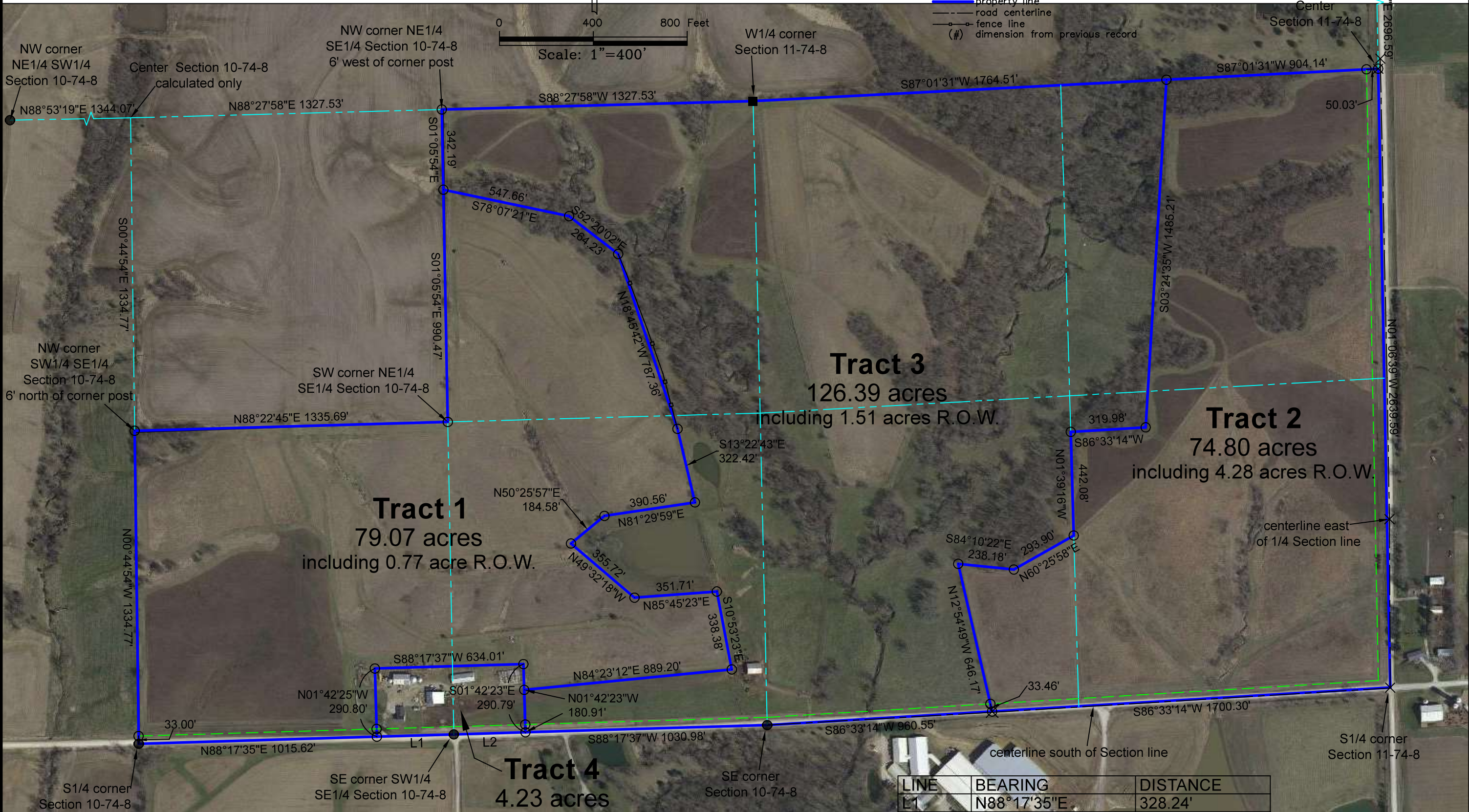
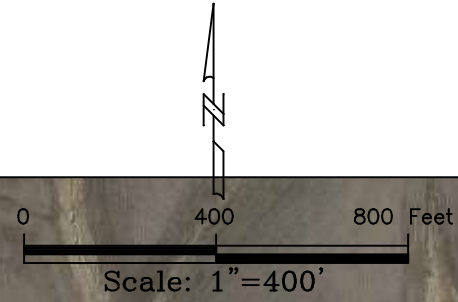


PLAT OF SURVEY

Sheet 2/2 | Basis of Bearing: IA RTK, ISPS Zone | Robertson, Ronald.dwg

- Legend:
- set 1/2"x30" rebar/orange cap #21980
 - found 5/8" rebar
 - ⊗ set cut X
 - ⊗ found 1/2" rebar in concrete
 - found stone
 - ⊗ found MAG nail
 - - - county road R.O.W. line
 - property line
 - - - road centerline
 - - - fence line
 - (#) dimension from previous record



LINE	BEARING	DISTANCE
L1	N88°17'35"E	328.24'
L2	S88°17'37"W	305.76'

including 0.48 acre R.O.W.