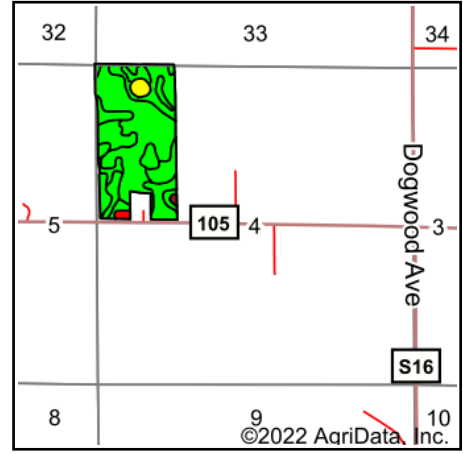
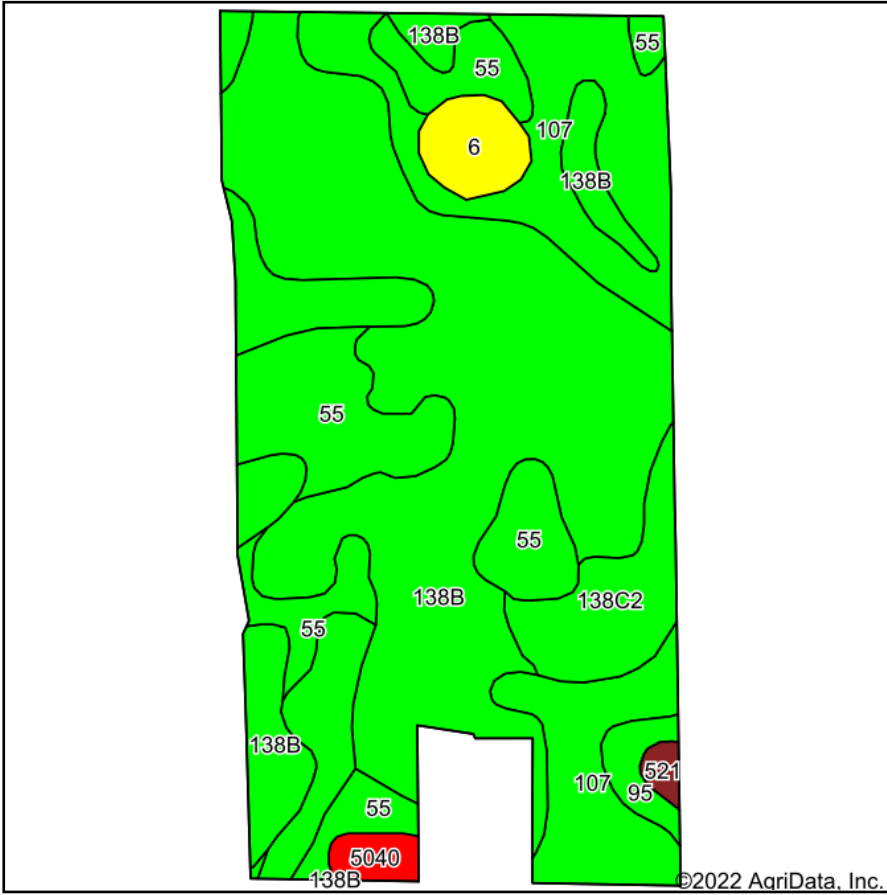


Soils Map



State: **Iowa**
 County: **Worth**
 Location: **4-99N-22W**
 Township: **Bristol**
 Acres: **73.14**
 Date: **10/11/2022**



Maps Provided By:

 CUSTOMIZED ONLINE MAPPING
 © AgriData, Inc. 2021 www.AgriDataInc.com



Soils data provided by USDA and NRCS.

Area Symbol: IA195, Soil Area Version: 25

| Code | Soil Description | Acres | Percent of field | CSR2 Legend | Non-Irr Class *c | CSR2** | CSR | |
|-------------------------|---|-------|------------------|-------------|------------------|-------------|-------------|-----------|
| 138B | Clarion loam, 2 to 6 percent slopes | 34.25 | 46.8% | | Ile | 89 | 80 | |
| 107 | Webster clay loam, 0 to 2 percent slopes | 19.46 | 26.6% | | IIw | 86 | 83 | |
| 55 | Nicollet clay loam, 1 to 3 percent slopes | 11.55 | 15.8% | | Iw | 89 | 88 | |
| 138C2 | Clarion loam, 6 to 10 percent slopes, moderately eroded | 3.84 | 5.3% | | IIIe | 83 | 64 | |
| 6 | Okoboji silty clay loam, 0 to 1 percent slopes | 1.80 | 2.5% | | IIIw | 59 | | |
| 95 | Harps clay loam, 0 to 2 percent slopes | 1.03 | 1.4% | | IIw | 72 | 62 | |
| 5040 | Anthroportic Udorthents, 2 to 9 percent slopes | 0.83 | 1.1% | | VIs | 5 | 5 | |
| 521 | Klossner muck, 0 to 1 percent slopes | 0.38 | 0.5% | | IIIw | 32 | | |
| Weighted Average | | | | | | 1.97 | 85.7 | *- |

**IA has updated the CSR values for each county to CSR2.

*- CSR weighted average cannot be calculated on the current soils data, use prior data version for csr values.

*c: Using Capabilities Class Dominant Condition Aggregation Method

Soils data provided by USDA and NRCS.