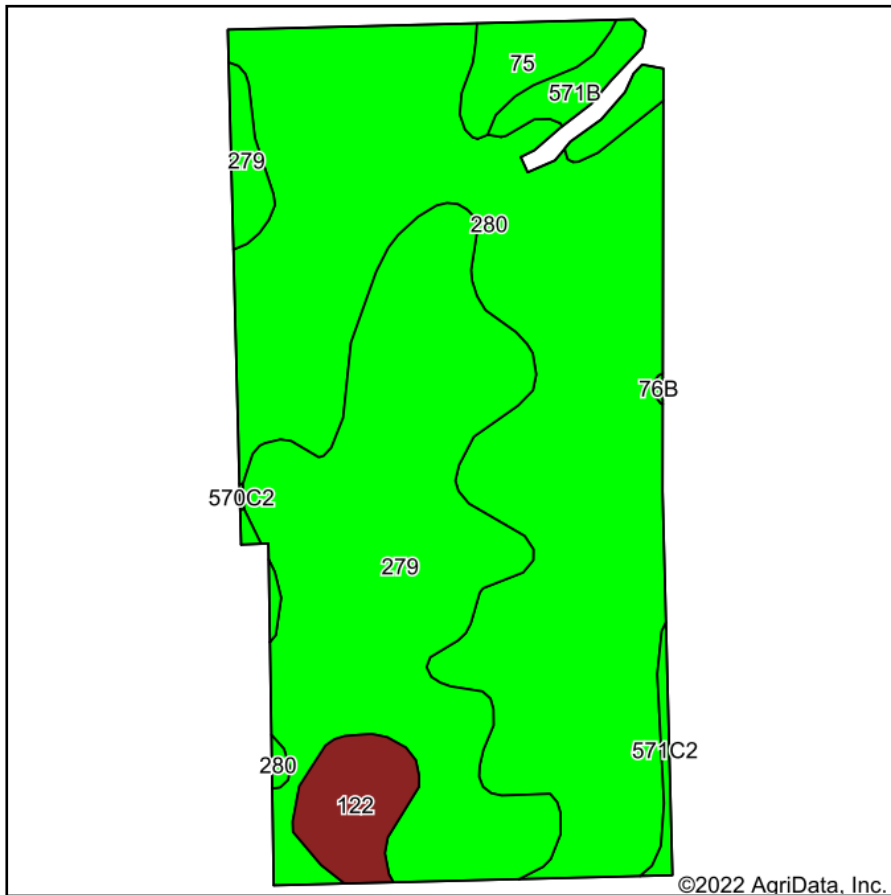
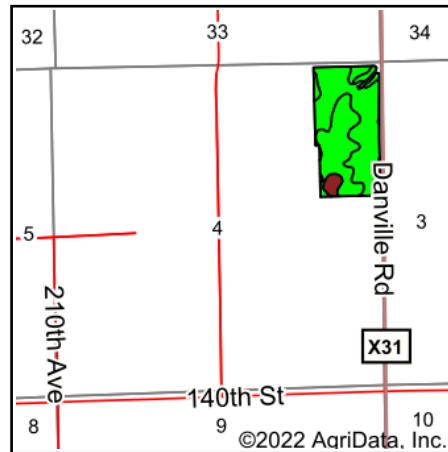


Soils Map



Soils data provided by USDA and NRCS.



State: **Iowa**
 County: **Des Moines**
 Location: **3-70N-4W**
 Township: **Danville**
 Acres: **48.08**
 Date: **8/2/2022**



Maps Provided By:



Area Symbol: IA057, Soil Area Version: 26

Code	Soil Description	Acres	Percent of field	CSR2 Legend	Non-Irr Class *c	CSR2**	CSR	
280	Mahaska silty clay loam, 0 to 2 percent slopes	26.80	55.7%		Iw	94	95	
279	Taintor silty clay loam, 0 to 2 percent slopes	16.53	34.4%		IIw	83	88	
122	Sperry silt loam, depressional, 0 to 1 percent slopes	1.84	3.8%		IIIw	36	63	
571B	Hedrick silt loam, 2 to 5 percent slopes	1.31	2.7%		IIe	85	82	
75	Givin silt loam, 1 to 3 percent slopes	1.28	2.7%		Iw	80	75	
571C2	Hedrick silt loam, 5 to 9 percent slopes, moderately eroded	0.32	0.7%		IIIe	75	62	
Weighted Average						1.46	87.3	90.3

**IA has updated the CSR values for each county to CSR2.

*c: Using Capabilities Class Dominant Condition Aggregation Method

Soils data provided by USDA and NRCS.