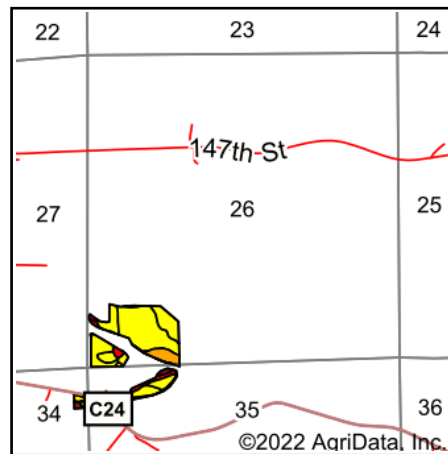
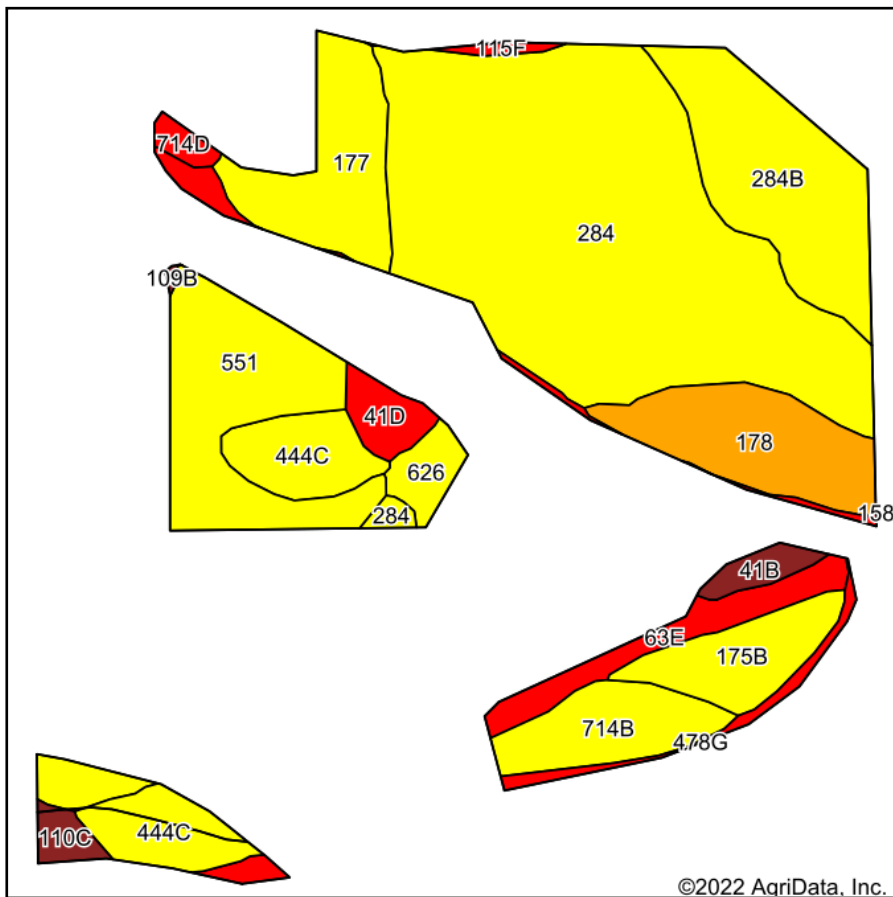


Soils Map



State: **Iowa**
 County: **Fayette**
 Location: **35-93N-7W**
 Township: **Illyria**
 Acres: **33.49**
 Date: **4/5/2022**



Maps Provided By:

 CUSTOMIZED ONLINE MAPPING
 © AgriData, Inc. 2021 www.AgriDataInc.com



Soils data provided by USDA and NRCS.

©2022 AgriData, Inc.

Area Symbol: IA065, Soil Area Version: 26

Code	Soil Description	Acres	Percent of field	CSR2 Legend	Non-Irr Class *c	Irr Class *c	CSR2**	CSR		
284	Flagler sandy loam, 0 to 2 percent slopes	12.60	37.6%		III _s		56	52		
551	Calamine silty clay loam, 1 to 3 percent slopes	3.76	11.2%		III _w		56	55		
284B	Flagler sandy loam, 2 to 5 percent slopes	3.37	10.1%		III _e		49	45		
178	Waukee loam, 0 to 2 percent slopes	2.33	7.0%		II _s		69	79		
177	Saude loam, 0 to 2 percent slopes	2.25	6.7%		II _s		60	64		
444C	Jacwin loam, 5 to 9 percent slopes	2.16	6.4%		III _e		58	45		
714B	Winneshiek loam, 20 to 30 inches to limestone, 2 to 5 percent slopes	1.53	4.6%		II _e		42	50		
175B	Dickinson fine sandy loam, 2 to 5 percent slopes	1.41	4.2%		III _e		50	55		
63E	Chelsea loamy fine sand, 14 to 25 percent slopes	1.12	3.3%		VII _s		5	5		
478G	Rock outcrop-Nordness complex, 25 to 60 percent slopes	0.90	2.7%				5	5		
41D	Sparta loamy fine sand, 9 to 14 percent slopes	0.55	1.6%		VI _s		7	15		
626	Hayfield loam, 0 to 2 percent slopes, rarely flooded	0.51	1.5%		II _s		53	67		
41B	Sparta loamy fine sand, 2 to 5 percent slopes	0.36	1.1%		IV _s	II _e	39	40		
110C	Lamont fine sandy loam, 5 to 14 percent slopes	0.31	0.9%		III _e		28	27		
714D	Winneshiek loam, 20 to 30 inches to limestone, 9 to 14 percent slopes	0.21	0.6%		IV _e		13	18		
115F	Sandy escarpments, 14 to 30 percent slopes	0.12	0.4%		VII _s		5	5		
Weighted Average							2.94	0.02	50.9	49.9

**IA has updated the CSR values for each county to CSR2.

*c: Using Capabilities Class Dominant Condition Aggregation Method

Soils data provided by USDA and NRCS.