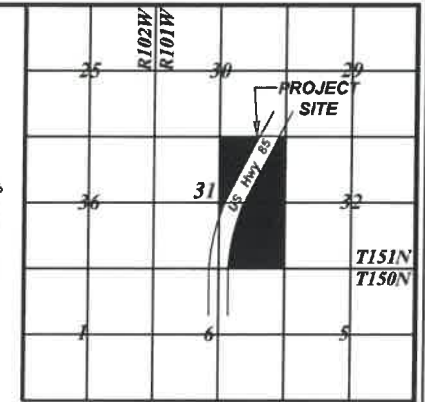
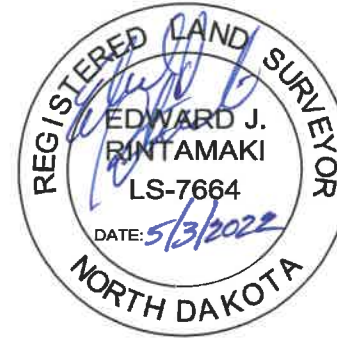
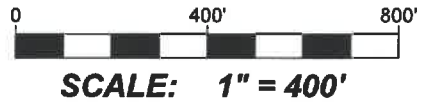
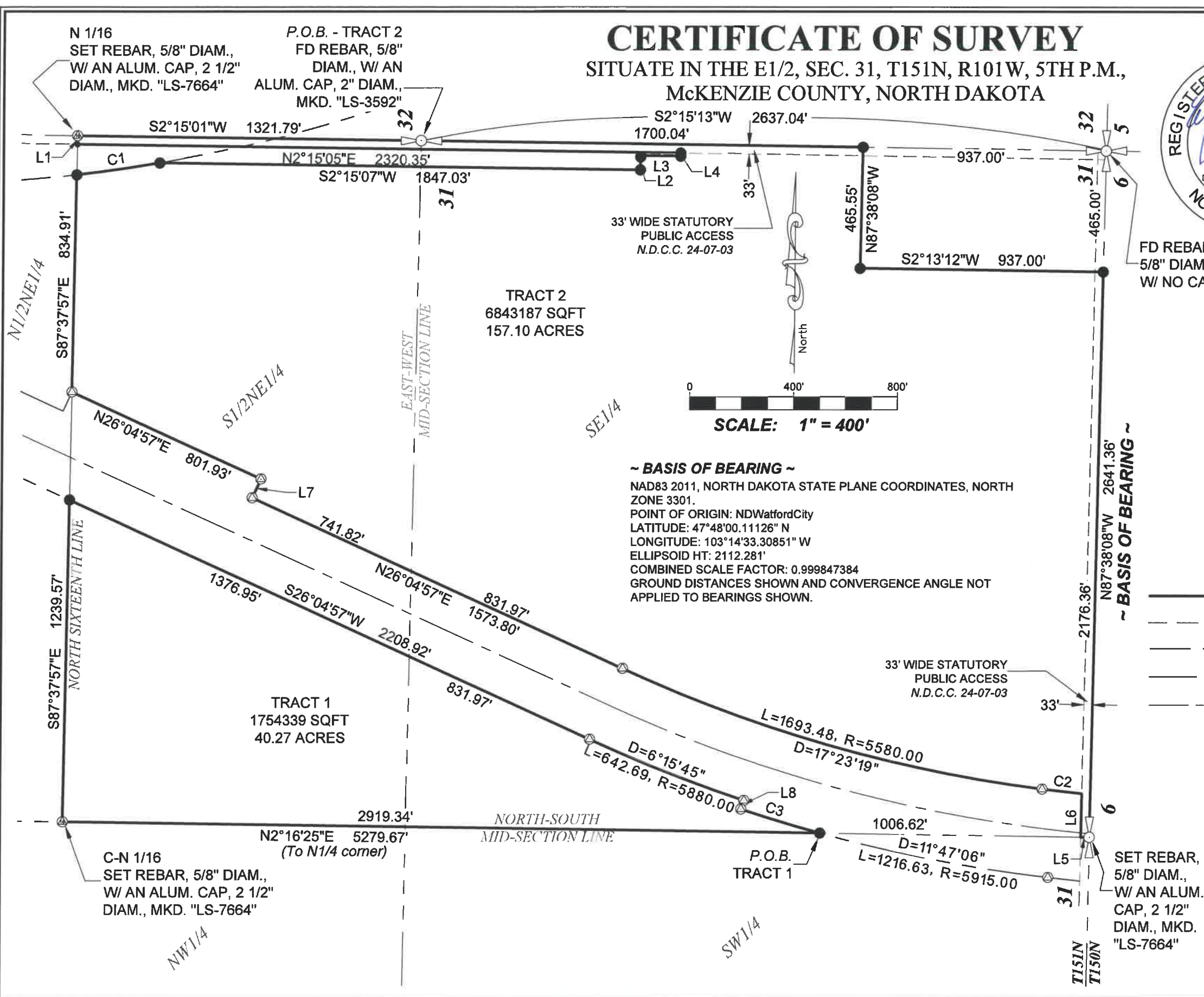


# CERTIFICATE OF SURVEY

SITUATE IN THE E1/2, SEC. 31, T151N, R101W, 5TH P.M.,  
MCKENZIE COUNTY, NORTH DAKOTA



~ VICINITY MAP ~  
NOT TO SCALE



~ BASIS OF BEARING ~  
NAD83 2011, NORTH DAKOTA STATE PLANE COORDINATES, NORTH ZONE 3301.  
POINT OF ORIGIN: NDWatfordCity  
LATITUDE: 47°48'00.11126" N  
LONGITUDE: 103°14'33.30851" W  
ELLIPSOID HT: 2112.281'  
COMBINED SCALE FACTOR: 0.999847384  
GROUND DISTANCES SHOWN AND CONVERGENCE ANGLE NOT APPLIED TO BEARINGS SHOWN.

- ~ LEGEND ~
- SECTION CORNER, AS NOTED
  - QUARTER SECTION CORNER, AS NOTED
  - SIXTEENTH SECTION CORNER, AS NOTED
  - FOUND REBAR, 5/8" DIAM., W/ AN ALUM. CAP, 2" DIAM., MKD. "LS-4934"
  - SET REBAR, 5/8" DIAM., 24" LONG, W/ A PLASTIC CAP MKD "EJR LS-7664", OR AS NOTED
  - CALCULATED POINT, NOTHING FOUND OR SET
  - P.O.B. POINT OF BEGINNING
  - BOUNDARY LINE, SURVEYED
  - EASEMENT LINE, EXISTING
  - SECTION LINE/ALIQUOT PART LINE
  - RIGHT OF WAY LINE
  - RIGHT OF WAY CENTERLINE

(See Sheet 2 for Line/Curve Table)

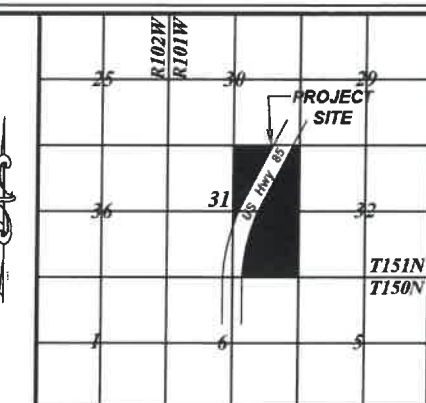
<b>CERTIFICATE OF SURVEY</b>		
SITUATE IN THE E1/2, SEC. 31, T151N, R101W, 5TH P.M., MCKENZIE COUNTY, NORTH DAKOTA		
		13046 74th Street NW, Alamo, North Dakota 58830 www.49latitudelandsurvey.net 701.580.2651
FILE NAME	FOR	
22_040 Steffes-Larsen Boundary_SURVEY.dwg	Steffes Group	
SCALE	DATE	DRAWN BY
400 Ft/In	May 3, 2022	EJR
JOB	REVISION	SHEET
22_040	1/1	1/3

# CERTIFICATE OF SURVEY

SITUATE IN THE E1/2, SEC. 31, T151N, R101W, 5TH P.M.,  
McKENZIE COUNTY, NORTH DAKOTA

Line Table		
Line #	Length	Direction
L1	33.02'	S87°37'57"E
L2	55.00'	S87°44'47"E
L3	154.50'	S2°15'13"W
L4	12.00'	S87°44'47"E
L5	33.00'	N2°16'25"E
L6	167.68'	S87°38'08"E
L7	79.99'	S63°57'24"E
L8	35.05'	N70°04'26"W

Curve Table					
Curve #	Length	Radius	Delta	Chord Direction	Chord Length
C1	323.06'	5929.65'	3°07'18"	S6°43'27"E	323.02'
C2	154.24'	5580.00'	1°35'02"	N7°53'27"E	154.24'
C3	318.35'	5915.00'	3°05'01"	S18°16'33"W	318.31'



~ VICINITY MAP ~  
NOT TO SCALE

~ **BOUNDARY DESCRIPTION - TRACT 1** ~

A TRACT OF LAND, SITUATED IN THE E1/2, SECTION 31, TOWNSHIP 151 NORTH, RANGE 101 WEST, 5TH PRINCIPAL MERIDIAN, McKENZIE COUNTY, NORTH DAKOTA, MORE PARTICULARLY DESCRIBED AS FOLLOWS:

COMMENCING AT THE SOUTH QUARTER CORNER OF SAID SECTION 31, MONUMENTED WITH A REBAR, 5/8 INCH DIAMETER, WITH AN ALUMINUM CAP, 2 1/2 INCHES DIAMETER, MARKED "LS-7664", FROM WHICH THE NORTH QUARTER CORNER OF SAID SECTION 31, MONUMENTED WITH A REBAR, 5/8 INCH DIAMETER, WITH AN ALUMINUM CAP, 2 INCHES DIAMETER, BEARS NORTH 02°16'25" EAST, A DISTANCE OF 5279.67 FEET;

THENCE ALONG THE NORTH-SOUTH MID-SECTION LINE, NORTH 02°16'25" EAST, A DISTANCE OF 1039.62 FEET, TO THE INTERSECTION OF THE WEST RIGHT OF WAY LINE OF US HIGHWAY 85 AND THE NORTH-SOUTH MID-SECTION LINE, MONUMENTED WITH A REBAR, 5/8 INCH DIAMETER, WITH A PLASTIC CAP, MARKED "EJR LS-7664", THE POINT OF BEGINNING;

THENCE AROUND THE SUBJECT PARCEL IN A CLOCKWISE MANNER, THE FOLLOWING SIX (6) COURSES;


1. CONTINUING ALONG THE NORTH-SOUTH MID-SECTION LINE OF SAID SECTION 31, NORTH 02°16'25" EAST, A DISTANCE OF 2919.34 FEET, TO THE NORTH SIXTEENTH LINE, MONUMENTED WITH A REBAR, 5/8 INCH DIAMETER, WITH A PLASTIC CAP, MARKED "EJR LS-7664";
2. THENCE ALONG SAID NORTH SIXTEENTH LINE, SOUTH 87°37'57" EAST, A DISTANCE OF 1239.57 FEET, TO THE WEST RIGHT OF WAY LINE OF US HIGHWAY 85, RECORDED AS INSTRUMENT NUMBER 477091, RECORDS OF McKENZIE COUNTY RECORDER, MONUMENTED WITH A REBAR, 5/8 INCH DIAMETER, WITH A PLASTIC CAP, MARKED "EJR LS-7664";
3. THENCE ALONG SAID RIGHT OF WAY LINE, SOUTH 26°04'57" WEST, A DISTANCE OF 2208.92 FEET, TO AN ANGLE POINT IN SAID RIGHT OF WAY LINE, MONUMENTED WITH A REBAR, 5/8 INCH DIAMETER, WITH AN ALUMINUM CAP, 2 INCHES DIAMETER, MARKED "LS-4934", A POINT OF CURVATURE;
4. THENCE ALONG THE ARC OF A CURVE TO THE LEFT, BEING CONCAVE TO THE SOUTHEAST, HAVING A RADIUS OF 5880.00 FEET, THROUGH A CENTRAL ANGLE OF 6°15'45", HAVING AN ARC LENGTH OF 642.69 FEET AND A CHORD BEARING AND DISTANCE OF SOUTH 22°56'25" WEST, 642.37 FEET, TO A REBAR, 5/8 INCH DIAMETER, WITH AN ALUMINUM CAP, 2 INCHES DIAMETER, MARKED "LS-4934", A POINT OF NON-TANGENCY;
5. THENCE NORTH 70°04'26" WEST, A DISTANCE OF 35.05 FEET, TO A REBAR, 5/8 INCH DIAMETER, WITH AN ALUMINUM CAP, 2 INCHES DIAMETER, MARKED "LS-4934", A POINT OF CURVATURE;
6. THENCE ALONG THE ARC OF A CURVE TO THE LEFT, BEING CONCAVE TO THE SOUTHEAST, HAVING A RADIUS OF 5915.00 FEET, THROUGH A CENTRAL ANGLE OF 03°05'01", HAVING AN ARC LENGTH OF 318.35 FEET AND A CHORD BEARING AND DISTANCE OF SOUTH 18°16'33" WEST, 318.31 FEET, TO THE POINT OF BEGINNING, CONTAINING 40.27 ACRES OF LAND, MORE OR LESS;

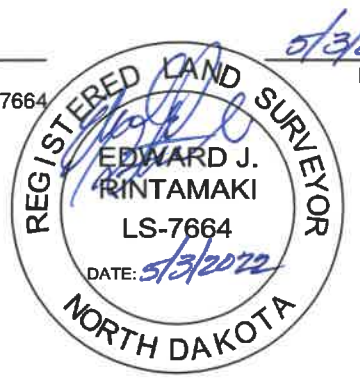
HEREAFTER TO BE KNOWN AS TRACT 1, E1/2, SECTION 31, TOWNSHIP 151 NORTH, RANGE 101 WEST, 5TH P.M., McKENZIE COUNTY, NORTH DAKOTA

SUBJECT TO: ANY EXISTING RIGHTS OF WAY, EASEMENTS, COVENANTS, CONDITIONS, RIGHTS, RESERVATIONS, RESTRICTIONS, ENCUMBRANCES OR APPLICABLE SUBDIVISION, BUILDING AND ZONING ORDINANCES AND USE REGULATIONS, OF RECORD OR IN VIEW.


~ **SURVEYOR'S CERTIFICATE** ~

I, EDWARD J RINTAMAKI, A REGISTERED LAND SURVEYOR WITH 49TH LATITUDE LAND SURVEY, LLC, DO HEREBY CERTIFY THAT THIS SURVEY WAS PERFORMED BY ME OR UNDER MY DIRECT SUPERVISION DURING THE MONTH OF APRIL, 2022, AND THIS PLAT IS A CORRECT REPRESENTATION OF THAT SURVEY SHOWN HEREON, AND THAT THE MONUMENTS ARE PLACED AS SHOWN, AND THAT I AM A DULY REGISTERED LAND SURVEYOR UNDER THE LAWS OF THE STATE OF NORTH DAKOTA.

  
EDWARD J RINTAMAKI  
REGISTERED LAND SURVEYOR NO. LS-7664  
STATE OF NORTH DAKOTA  
49TH LATITUDE LAND SURVEY, LLC



5/3/2022  
DATE

CERTIFICATE OF SURVEY		
SITUATE IN THE E1/2, SEC. 31, T151N, R101W, 5TH P.M., McKENZIE COUNTY, NORTH DAKOTA		
 <b>LATITUDELANDSURVEY®</b>		13046 74th Street NW, Alamo, North Dakota 58830 www.49latitudelandsurvey.net 701.580.2651
FILE NAME	FOR	
22_040 Steffes-Larsen Boundary_SURVEY.dwg	Steffes Group	
SCALE	DATE	DRAWN BY
400 Ft/In	May 3, 2022	EJR
JOB	REVISION	SHEET
22_040	1/1	2/3

# CERTIFICATE OF SURVEY

SITUATE IN THE E1/2, SEC. 31, T151N, R101W, 5TH P.M.,  
McKENZIE COUNTY, NORTH DAKOTA

**~ BOUNDARY DESCRIPTION - TRACT 2 ~**

A TRACT OF LAND, SITUATED IN THE E1/2, SECTION 31, TOWNSHIP 151 NORTH, RANGE 101 WEST, 5TH PRINCIPAL MERIDIAN, McKENZIE COUNTY, NORTH DAKOTA, MORE PARTICULARLY DESCRIBED AS FOLLOWS:

BEGINNING AT THE EAST QUARTER CORNER OF SAID SECTION 31, MONUMENTED WITH A REBAR, 5/8 INCH DIAMETER, WITH AN ALUMINUM CAP, 2 INCHES DIAMETER, MARKED "LS-3592", FROM WHICH THE SOUTHEAST CORNER OF SAID SECTION 31, MONUMENTED WITH A REBAR, WITH NO CAP, BEARS SOUTH 02°15'13" WEST, A DISTANCE OF 2637.04 FEET;

THENCE AROUND THE SUBJECT PARCEL IN A CLOCKWISE MANNER, THE FOLLOWING TWENTY (20) COURSES;

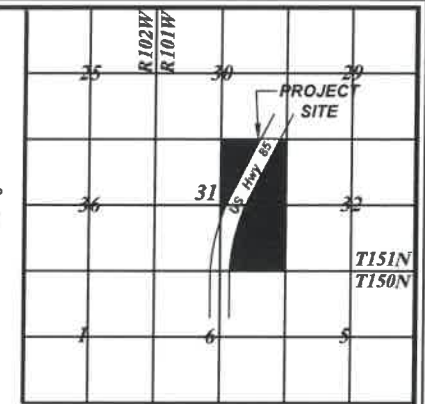
1. ALONG THE EAST LINE OF SAID SECTION 31, SOUTH 02°15'13" WEST, A DISTANCE OF 1700.04 FEET, TO THE NORTHEAST CORNER OF IRREGULAR TRACT 1810, AS RECORDED UNDER INSTRUMENT NUMBER 483758, RECORDS OF McKENZIE COUNTY RECORDER, MONUMENTED WITH A REBAR, 5/8 INCH DIAMETER, WITH A PLASTIC CAP, MARKED "EJR LS-7664";
2. THENCE LEAVING SAID EAST LINE AND ALONG THE NORTH BOUNDARY LINE OF SAID IRREGULAR TRACT 1810, NORTH 87°38'08" WEST, A DISTANCE OF 465.55 FEET, TO THE NORTHWEST CORNER OF SAID IRREGULAR TRACT, MONUMENTED WITH A REBAR, 5/8 INCH DIAMETER, WITH A PLASTIC CAP, MARKED "EJR LS-7664";
3. THENCE ALONG THE WEST BOUNDARY LINE OF SAID IRREGULAR TRACT, SOUTH 02°13'12" WEST, A DISTANCE OF 937.00 FEET, TO THE SOUTH LINE OF SECTION 31, MONUMENTED WITH A REBAR, 5/8 INCH DIAMETER, WITH A PLASTIC CAP, MARKED "EJR LS-7664";
4. THENCE ALONG THE SAID SOUTH LINE, NORTH 87°38'08" WEST, A DISTANCE OF 2176.36 FEET, TO THE SOUTH QUARTER CORNER OF SECTION 31, MONUMENTED WITH A REBAR, 5/8 INCH DIAMETER, WITH AN ALUMINUM CAP, 2 1/2 INCHES DIAMETER, MARKED "LS-7664";
5. THENCE ALONG THE NORTH-SOUTH MID-SECTION LINE OF SAID SECTION 31, NORTH 02°16'25" EAST, A DISTANCE OF 33.00 FEET, TO THE INTERSECTION OF THE NORTH-SOUTH MID-SECTION LINE AND THE STATUTORY 33 FEET PUBLIC ACCESS LINE;
6. THENCE ALONG THE STATUTORY 33 FEET PUBLIC ACCESS LINE, SOUTH 87°38'08" EAST, A DISTANCE OF 167.68 FEET, TO THE EAST RIGHT OF WAY LINE OF US HIGHWAY 85, RECORDED AS INSTRUMENT NUMBER 477091, RECORDS OF McKENZIE COUNTY RECORDER, MONUMENTED WITH A REBAR, 5/8 INCH DIAMETER, WITH A PLASTIC CAP, MARKED "EJR LS-7664", A POINT OF NON-TANGENT CURVATURE;
7. THENCE ALONG THE ARC OF A CURVE TO THE RIGHT, BEING CONCAVE TO THE SOUTHEAST, HAVING A RADIUS OF 5580.00 FEET, THROUGH A CENTRAL ANGLE OF 01°35'02", HAVING AN ARC LENGTH OF 154.24 FEET AND A CHORD BEARING AND DISTANCE OF NORTH 07°53'27" EAST, 154.24 FEET, TO A REBAR, 5/8 INCH DIAMETER, WITH AN ALUMINUM CAP, 2 INCHES DIAMETER, MARKED "LS-4934", A POINT OF COMPOUND CURVATURE;
8. THENCE ALONG THE ARC OF A CURVE TO THE RIGHT, BEING CONCAVE TO THE SOUTHEAST, HAVING A RADIUS OF 5580.00 FEET, THROUGH A CENTRAL ANGLE OF 17°23'19", HAVING AN ARC LENGTH OF 1693.48 FEET AND A CHORD BEARING AND DISTANCE OF NORTH 17°22'37" EAST, 1686.99 FEET, TO A REBAR, 5/8 INCH DIAMETER, WITH AN ALUMINUM CAP, 2 INCHES DIAMETER, MARKED "LS-4934", A POINT OF TANGENCY;
9. THENCE NORTH 26°04'57" EAST, A DISTANCE OF 1573.80 FEET, TO A REBAR, 5/8 INCH DIAMETER, WITH AN ALUMINUM CAP, 2 INCHES DIAMETER, MARKED "LS-4934";
10. THENCE SOUTH 63°57'24" EAST, A DISTANCE OF 79.99 FEET, TO A REBAR, 5/8 INCH DIAMETER, WITH AN ALUMINUM CAP, 2 INCHES DIAMETER, MARKED "LS-4934";

**~ BOUNDARY DESCRIPTION - TRACT 2 cont'd ~**

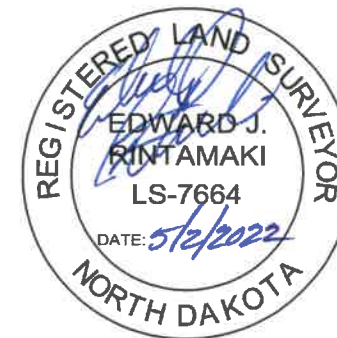
11. THENCE NORTH 26°04'57" EAST, A DISTANCE OF 802.02 FEET, TO THE NORTH SIXTEENTH LINE, MONUMENTED WITH A REBAR, 5/8 INCH DIAMETER, WITH AN ALUMINUM CAP, 2 INCHES DIAMETER, MARKED "LS-4934";
12. THENCE LEAVING SAID RIGHT OF WAY LINE AND ALONG SAID NORTH SIXTEENTH LINE, SOUTH 87°37'57" EAST, A DISTANCE OF 834.91 FEET, TO THE HIGHWAY RIGHT OF WAY LINE, PER NORTH DAKOTA DEPARTMENT OF TRANSPORTATION, PROJECT F-302(19), MONUMENTED WITH A REBAR, 5/8 INCH DIAMETER, WITH A PLASTIC CAP, MARKED "EJR LS-7664", A POINT OF NON-TANGENT CURVATURE;
13. THENCE ALONG THE ARC OF A CURVE TO THE LEFT, BEING CONCAVE TO THE EAST, HAVING A RADIUS OF 5929.65 FEET, THROUGH A CENTRAL ANGLE OF 03°07'18", HAVING AN ARC LENGTH OF 323.06 FEET AND A CHORD BEARING AND DISTANCE OF SOUTH 06°43'27" EAST, 323.02 FEET, TO A REBAR, 5/8 INCH DIAMETER, WITH A PLASTIC CAP, MARKED "EJR LS-7664", A POINT OF NON-TANGENCY;
14. THENCE SOUTH 02°15'07" WEST, A DISTANCE OF 1847.03 FEET, TO A REBAR, 5/8 INCH DIAMETER, WITH A PLASTIC CAP, MARKED "EJR LS-7664";
15. THENCE SOUTH 87°44'47" EAST, A DISTANCE OF 55.00 FEET, TO A REBAR, 5/8 INCH DIAMETER, WITH A PLASTIC CAP, MARKED "EJR LS-7664";
16. THENCE SOUTH 02°15'13" WEST, A DISTANCE OF 154.50 FEET, TO A REBAR, 5/8 INCH DIAMETER, WITH A PLASTIC CAP, MARKED "EJR LS-7664";
17. THENCE SOUTH 87°44'47" EAST, A DISTANCE OF 12.00 FEET, TO THE STATUTORY 33 FEET PUBLIC ACCESS LINE, MONUMENTED WITH A REBAR, 5/8 INCH DIAMETER, WITH A PLASTIC CAP, MARKED "EJR LS-7664";
18. THENCE ALONG THE STATUTORY 33 FEET PUBLIC ACCESS LINE, NORTH 02°15'05" EAST, A DISTANCE OF 2320.35 FEET, TO THE NORTH SIXTEENTH LINE;
19. THENCE ALONG SAID NORTH SIXTEENTH LINE, SOUTH 87°37'57" EAST, A DISTANCE OF 33.02 FEET, TO THE EAST LINE OF SECTION 31;
20. THENCE ALONG THE SAID EAST LINE, SOUTH 02°15'01" WEST, A DISTANCE OF 1321.79 FEET, TO THE POINT OF BEGINNING, CONTAINING 157.10 ACRES OF LAND, MORE OR LESS;


HEREAFTER TO BE KNOWN AS TRACT 2, E1/2, SECTION 31, TOWNSHIP 151 NORTH, RANGE 101 WEST, 5TH P.M., McKENZIE COUNTY, NORTH DAKOTA

SUBJECT TO: ANY EXISTING RIGHTS OF WAY, EASEMENTS, COVENANTS, CONDITIONS, RIGHTS, RESERVATIONS, RESTRICTIONS, ENCUMBRANCES OR APPLICABLE SUBDIVISION, BUILDING AND ZONING ORDINANCES AND USE REGULATIONS, OF RECORD OR IN VIEW.



~ VICINITY MAP ~  
NOT TO SCALE



<b>CERTIFICATE OF SURVEY</b> SITUATE IN THE E1/2, SEC. 31, T151N, R101W, 5TH P.M., McKENZIE COUNTY, NORTH DAKOTA		
 <b>LATITUDELANDSURVEY®</b>		13046 74th Street NW, Alamo, North Dakota 58830 www.49latitudelandsurvey.net 701.580.2651
FILE NAME	FOR	
22_040 Steffes-Larsen Boundary_SURVEY.dwg	Steffes Group	
SCALE	DATE	DRAWN BY
400 Ft/In	May 3, 2022	EJR
JOB	REVISION	SHEET
22_040	1/1	3/3