

# AUCTION

## Farm Retirement

TIMED ONLINE

OPENS: Wednesday, March 2

CLOSES: WEDNESDAY, MARCH 9 | 6:30PM CST 2022

PREVIEW: By appointment.

LOADOUT: By appointment within two weeks following close of auction.

### TRACK TRACTOR

2004 Cat Challenger MT855, C15 Cat, 460 hp., powershift, 5 hyd., large 1000 PTO, integrated auto steer, steering wheel controls, decelerator pedal, power mirrors, front inside/outside track weights, front suitcase weights, swing drawbar hitch, 36" tracks, shows 7,709 hrs., \$40,000 in recent work orders for transmission, S/NAGCMT855EBCC60826

### TRACTORS & LOADER

1992 Case-IH 9280, 4WD, CAH, Cummins 855, 375 hp., 12 spd. powershift, 4 hyd., large 1000 PTO, Firestone 20.8-42 triples, shows 10,680 hrs., New batteries, S/NJCB0028877  
1998 Case-IH 8930, MFWD, powershift, 4 hyd., power beyond, return flow, 3 pt. w/rear remote controls & quick hitch, 540/1000 PTO, Trimble Nav Commander II, w/710 loader, 8' Haugen bucket, aux. hookup for grapple, 380/85R30 front tires, 380/90R46 rear tires w/hub duals, shows 7,542 hrs., New RF wheel seal, new batteries last year, S/NAJB0086395  
Allis Chalmers WD45, 2WD, wide front, 2 pt., 540 PTO, 6' Woods belly mower, 6.00-16 front tires, 13.6-28 rear tires, S/N not available

### GPS EQUIPMENT

(2) Trimble FM-750 displays

### COMBINES

1993 Case-IH 1688 axial flow, 2WD, CAH, cloth, buddy seat, AHH, DAS, reverser, rock trap, adapted to single pt., grain scan monitor, hyd. chaff spreader w/aluminum plates, large wire concaves, adj. rear axle, 30.5-32 front tires, 14.9-24 rear tires, owner states approx. 3,000-4,000 engine hrs., tach has been replaced, New feeder chain, newer rotor bars & air foil sieve, S/NJJC0119355  
1986 Case-IH 1680 axial flow, 2WD, CAH, cloth, buddy seat, AHH, DAS, reverser, rock trap, grain scan monitor, hyd. chaff spreader w/aluminum plates, large wire concaves, adj. rear axle, 24.5-32 front tires, 14.9-24 rear tires, shows 4,932 engine hrs., \$20,000 in updates w/new motor in 2015 & one season of use since, S/N28121

### HEADS & HEADER TRAILER

2009 Case-IH 2020 flex head, 30', hyd. fore/aft, dual sickle drive, full finger drum, poly finger reel, low dam, CWS air bar, single pt., adapter plate to fit older Series combines, S/NY9ZL51009  
(2) IHC 810 pickup heads, 13', 6-belt, wind guard, S/N1480111U050299, S/N1480075U026418  
Industrias America 430 single axle header trailer, 30', adj. mounts, adj. front dolly hitch, 225/75R16 tires on steel rims

### GRAIN CART

Unverferth 7000 grain cart, 750 bu., New roll tarp, New wheel bearings

### AIR SEEDER

Case-IH 3310 air seeder, 33', 10" spacing, 3-section fold, floating hitch, loop population monitor, (2) per tower, Haukaas hyd. folding markers, leveling discs, aircraft packing wheels, w/Case-IH Concord 2300 tow-behind commodity cart, 2 compartment, ground drive, hyd. fan, load auger, 18.4-26 tires, seeder S/NCKB0014006, cart S/NCKB0011006

### SEED TENDER

Norwood Seed Shuttle 400 tri-axle seed tender, Honda GX340 gas engine, dual hopper, belted conveyor, manual swing, hyd. lift, remote spd. controls, rear lights, 235/80R16 tires on steel rims, S/N415NS013

### TILLAGE & ROW CROP EQUIPMENT

Case-IH 4300 field cultivator, 52', 6" spacing, 5-section fold, walking tandems across, 3-bar harrow, S/NJAG0621238  
John Deere 610 chisel plow, 37', 12" spacing, 3-section fold, single pt. depth, walking tandems across, 4-bar harrow, S/NN00610X003637  
Chisel plow, 24', 12" spacing, 3-section fold, double spring shanks, 2-bar harrow, S/N not available  
Big G disc, 28'  
Summers harrow, 60', 3/8" tines, 5-bar  
IHC 700 pull-type moldboard plow, 7x16"  
(2) IHC 700 moldboard plows, 3 pt., (1) 6x16", (1) 4x16"  
Rotary hoe, 3 pt., lift assist

### SEMI TRACTORS & TRUCK

2000 Freightliner FLD112 tandem axle day cab, Cat diesel, Eaton 10 spd., engine brake, air ride & air ride cab, fixed 5th, diff lock, corner windows, single aluminum fuel tank, 12,000 lb. front, 40,000 lb. rear, 295/75R22.5 tires on aluminum rims, shows 658,140 miles  
1995 Peterbilt 377 tandem axle day cab, 3406 Cat, 355 hp., Eaton 10 spd., engine brake, air ride & air ride cab, air slide 5th, cruise, diff lock, heated power mirrors, RH air window, dual aluminum fuel tanks, 1/2 fenders, 12,000 lb. front, 34,000 lb. rear, 181" WB, 295/75R22.5 tires on aluminum rims, shows 1,409,295 miles  
1976 IH Transtar 4300 tri-axle, twin screw w/air up/down tag axle, Cummins diesel, Eaton 13 spd., spring susp., 22'x100"x64" box, PTO hoist, roll tarp, combo gate, plumbed for rear drill fill, diff lock, 10.00-20 tires on steel rims, shows 8,019 hrs., shows 40,794 miles

### SERVICE TRUCK

1998 Dodge Ram 3500 dually service truck, ext. cab, Cummins turbo diesel, 5 spd. manual, 4WD, CM flatbed, leather, power windows, side storage compartments, approx. 110 gal. diesel service tank, twin exhaust stacks, tow mirrors & lights, grill guard bumper, rebuilt transfer case, 268,894 miles

### HOPPER BOTTOM & OTHER TRAILERS

2004 Merritt MVT tandem axle aluminum hopper bottom, 40'x96"x68", spring ride, Shur-Co electric roll tarp, rear LED lights, sight glass, 11R24.5 tires on steel rims  
WW tandem axle bumper hitch livestock trailer, 16'Lx7'W, 5'W interior, side access door, rear swing/slide gate, center divider, front storage compartments  
PJ 48316GR tandem axle bumper hitch trailer, 16'x7', wood deck, front wood sides, fold-down ramp, full fenders, electric brakes, 205/75R15 tires on steel rims  
Trail-Eze tandem axle gooseneck dump trailer, 13'x32" box, spring ride, electric over hyd. hoist, 12-16.5 tires on steel rims  
Donahue trailer  
Shop-built bumper hitch pickup box trailer, made from Chevrolet pickup w/topper for sleeping, No title

### SPRAY CADDY, SPRAY TRAILER & UTV SPRAYER

Red River single axle spray caddy, 700 gal. fiberglass tank, ground drive, hyd. pump, asst. plumbing & tubing, 16.5L-16.1 tires  
1984 Great Dane tandem axle sprayer trailer, spring ride, roll-up door, side walk-in door, aluminum ramp, (3) 1,400 gal. poly tanks, 2" plumbing w/Banjo valves, central fill, PowerPro 6-1/2 hp. gas engine w/pump, Super-Reel electric hose reel w/2" hose, air liquid chemical pump, 50 gal. F&S mix cone, 275/80R22.5 tires on steel rims, full purchase price will be listed on the title  
F&S UTV sprayer, 20" spacing, 50 gal. poly tank, Honda GX120 gas engine, wand w/reel, pressure gauge, (2) flood nozzles

### GRAIN HANDLING EQUIPMENT

Westfield MK100-71 loadout auger, 71'x10", 540 PTO, hyd. lift, hyd. hopper walker w/remotes, swing out hopper, S/N not available  
Westfield J207-41 loadout auger, 41'x7", Wheatheart hyd. walker system, Wheatheart dragline, Briggs 16 hp. gas engine, S/N147131  
Loadout auger, 35'x6", gas motor w/electric start

### SKID STEER LOADER

Circle M Rounder L700 skid steer loader, open ROPS, Onan gas engine, 40" bucket, front aux. hyd., hand & foot controls, 23x8.5-12 Xtra-Wall solid tires, shows 74 hrs., bad motor, S/N not available

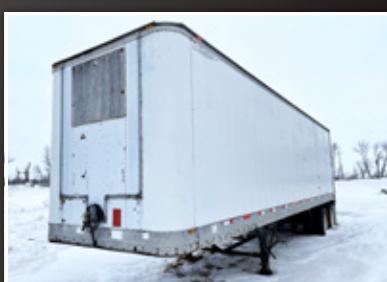
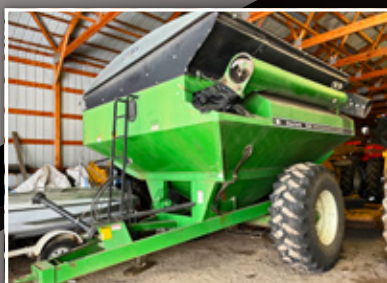
### OTHER EQUIPMENT

Bush Hog 2315 batwing mower, 15', 540 PTO, Goodyear 24x7.7 16-ply aircraft tires, S/N12-01288  
Buhler Farm King Y9600 snowblower, 8', 3 pt., 540 PTO, hyd. chute & spout, S/N20401797

### TANKS

2,000 gal. diesel tank w/pump  
1,000 gal. gas tank w/pump

16537 43rd St SE, Davenport, ND 58021.



Randy & Lisa Hajek

Randy, 701.238.6311

or Justin Ruth at Steffes Group, 701.237.9173 or 701.630.5583

701.237.9173 | SteffesGroup.com

Steffes Group, Inc., 2000 Main Avenue East, West Fargo, ND 58078



TERMS: All items sold as is where is. Payment of cash or check must be made sale day before removal of items. Statements made auction day take precedence over all advertising. \$35 documentation fee applies to all titled vehicles. Titles will be mailed. Canadian buyers need a bank letter of credit to facilitate border transfer. Scott Steffes MT:RRE-BRO-LIC-16877, ND81, MN14-51; Brad Olstad ND319, MN14-70; Max Steffes ND999, MN14-031; Justin Ruth ND2019, MN14-041

