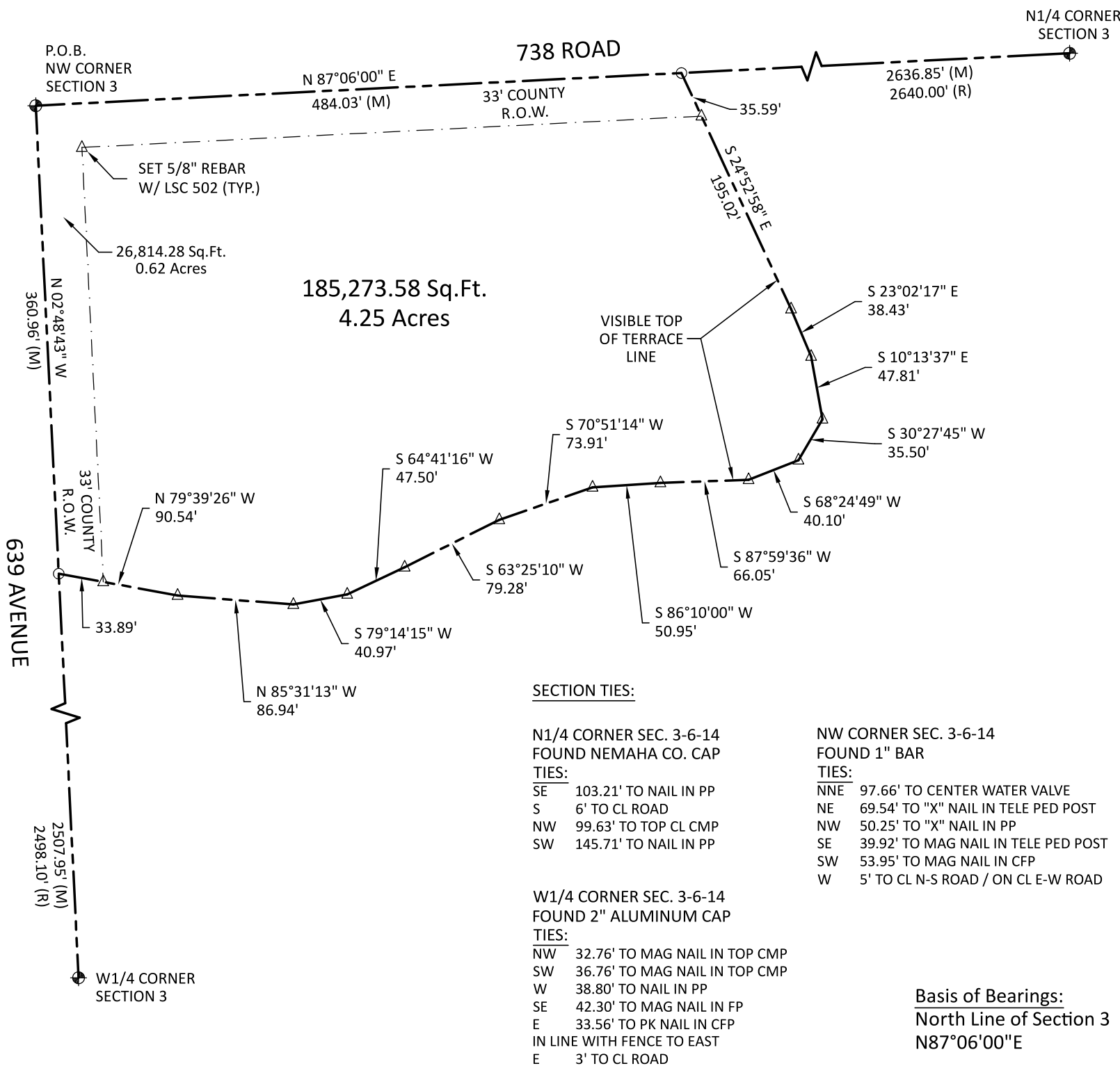


# SURVEY RECORD

A TRACT OF LAND IN NW1/4 SECTION 3,  
T6N, R14E, OF THE 6TH P.M.  
NEMAHA COUNTY, NEBRASKA



## LEGAL DESCRIPTION:

A TRACT OF LAND IN THE NW 1/4 CORNER OF SECTION 3, T6N, R14E OF THE 6TH P.M., NEMAHA COUNTY, NEBRASKA, MORE PARTICULARLY DESCRIBED AS FOLLOWS;

BEGINNING AT THE NW CORNER OF SAID SECTION 3; THENCE N87°06'00"E ALONG THE NORTH LINE OF SAID SECTION 3, A DISTANCE OF 484.03 FEET; THENCE S24°52'58"E A DISTANCE OF 195.02 FEET; THENCE S23°02'17"E A DISTANCE OF 38.43 FEET; THENCE S10°13'37"E A DISTANCE OF 47.81 FEET; THENCE S30°27'45"W A DISTANCE OF 35.50 FEET; THENCE S68°24'49"W A DISTANCE OF 40.10 FEET; THENCE S87°59'36"W A DISTANCE OF 66.05 FEET; THENCE S86°10'00"W A DISTANCE OF 50.95 FEET; THENCE S70°51'14"W A DISTANCE OF 73.91 FEET; THENCE S63°25'10"W A DISTANCE OF 79.28 FEET; THENCE S64°41'16"W A DISTANCE OF 47.50 FEET; THENCE S79°14'15"W A DISTANCE OF 40.97 FEET; THENCE N85°31'13"W A DISTANCE OF 86.94 FEET; THENCE N79°39'26"W A DISTANCE OF 90.54 FEET TO THE WEST LINE OF SAID SECTION 3; THENCE N02°48'43"W ALONG THE WEST LINE OF SAID SECTION 3 A DISTANCE OF 360.96 FEET TO THE NORTH LINE OF SAID SECTION 3 AND THE POINT OF BEGINNING.

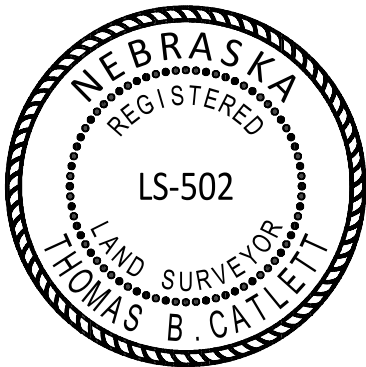
THE SUBJECT TRACT CONTAINS AN AREA OF 185,273.58 SQUARE FEET OR 4.25 ACRES MORE OR LESS OF WHICH 26,814.28 SQUARE FEET OR 0.62 ACRES IS SUBJECT TO COUNTY ROAD R.O.W.

## LAND SURVEYORS CERTIFICATE

THIS IS TO CERTIFY THAT THIS SURVEY WAS DONE BY THE UNDERSIGNED, THAT THE SURVEY WAS DONE ON THE GROUND IN ACCORDANCE WITH THE MOST RECENT MINIMUM STANDARDS FOR PROPERTY BOUNDARY SURVEYS, AS SET FORTH BY THE NEBRASKA STATE BOARD OF EXAMINERS FOR REGISTERED LAND SURVEYORS AND THAT THE ACCURACY SPECIFICATION AND POSITION TOLERANCE ARE IN ACCORDANCE WITH RURAL AREA SURVEYS.

DATE: 10/28/21

THOMAS B. CATLETT



### LEGEND

- △ - SET SURVEY POINT AS INDICATED
- - FOUND SURVEY POINT AS INDICATED
- - CALCULATED SURVEY POINT
- CTP - CRIMPED TOP PIPE
- OTP - OPEN TOP PIPE
- M - MEASURED DISTANCE
- C - CALCULATED DISTANCE
- P - PLAT DISTANCE
- R - RECORDED DISTANCE

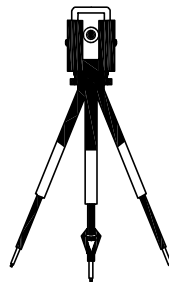
--- BOUNDARY LINE

## CATLETT LAND SURVEYING

Bennet, Nebraska

Cell: 402.217.5816 Fax: 402.782.9901

tcatlett@catlettsurveying.com



Drawn By: JS  
Checked By: TC  
Crew: TC  
Date: 10/26/2021 (FIELD)  
Job #: 2021-100  
Scale: 1" = 100'

Sheet 1 of 1