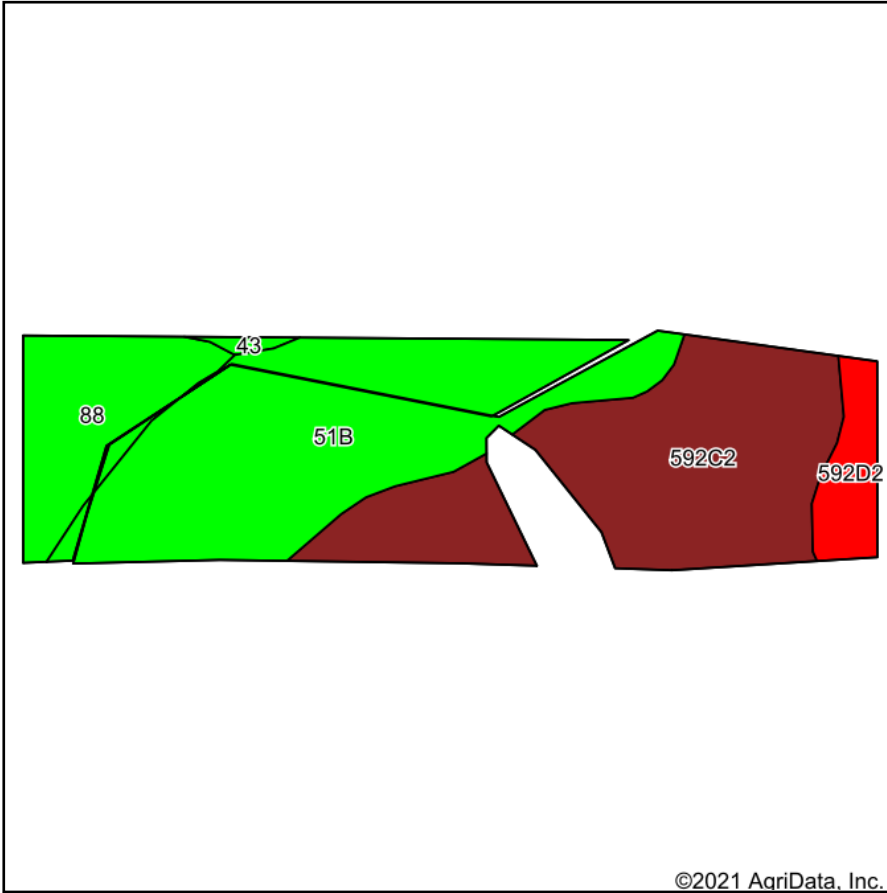
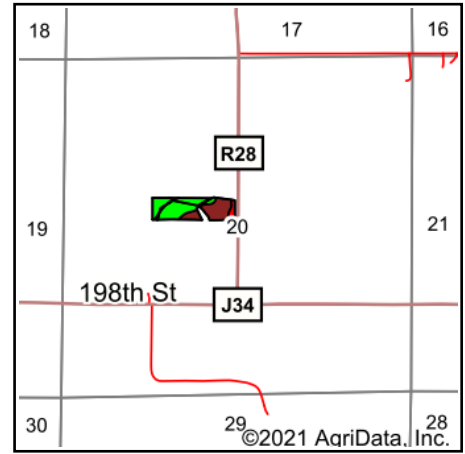


Soils Map



Soils data provided by USDA and NRCS.



State: **Iowa**
 County: **Decatur**
 Location: **20-69N-26W**
 Township: **Decatur**
 Acres: **9.32**
 Date: **9/3/2021**



Maps Provided By:



© AgriData, Inc. 2021

www.AgriDataInc.com



Area Symbol: IA053, Soil Area Version: 26

Code	Soil Description	Acres	Percent of field	CSR2 Legend	Non-Irr Class *c	CSR2**	CSR
51B	Vesser silt loam, 2 to 5 percent slopes, rarely flooded	4.02	43.1%		IIw	75	65
592C2	Mystic clay loam, 5 to 9 percent slopes, moderately eroded	3.50	37.6%		IIIe	31	20
88	Nevin silty clay loam, heavy till, 0 to 2 percent slopes, rarely flooded	1.29	13.8%		Iw	95	90
592D2	Mystic clay loam, 9 to 14 percent slopes, moderately eroded	0.51	5.5%		IVe	10	5
Weighted Average						57.7	48.3

**IA has updated the CSR values for each county to CSR2.

*c: Using Capabilities Class Dominant Condition Aggregation Method

Soils data provided by USDA and NRCS.