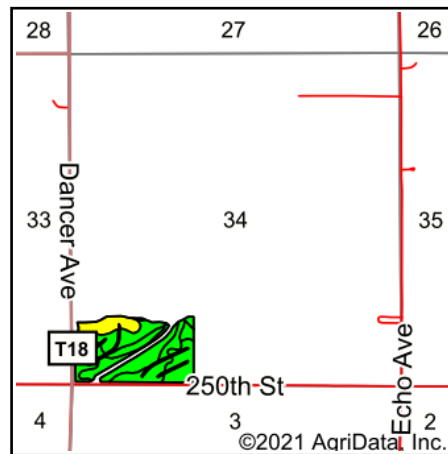
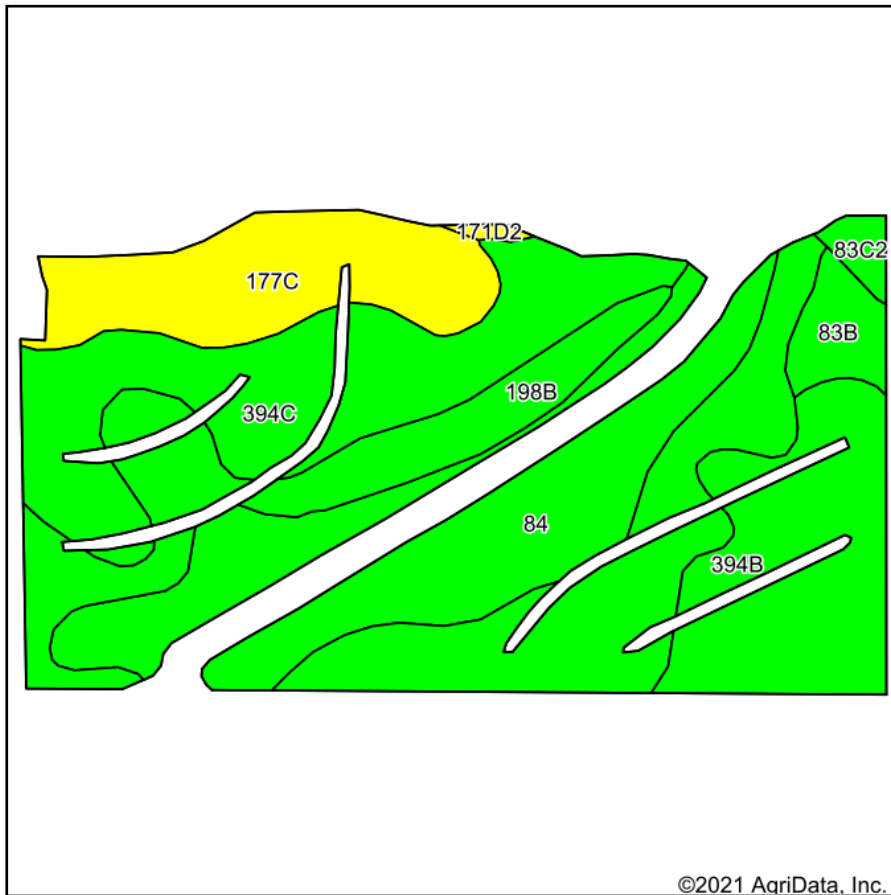


Soils Map



State: **Iowa**
 County: **Floyd**
 Location: **34-95N-18W**
 Township: **Scott**
 Acres: **38.68**
 Date: **9/13/2021**



Maps Provided By:



© AgriData, Inc. 2021

www.AgriDataInc.com



Soils data provided by USDA and NRCS.

Area Symbol: IA067, Soil Area Version: 26

| Code | Soil Description | Acres | Percent of field | CSR2 Legend | Non-Irr Class *c | CSR2** | CSR | Alfalfa hay | Bromegrass alfalfa | Bromegrass alfalfa hay | Canarygrass hay | Corn | Corn silage | Kentucky bluegrass | Oats | Smooth bromegrass |
|-------------------------|--|-------|------------------|-------------|------------------|-------------|-------------|-------------|--------------------|------------------------|-----------------|------------|-------------|--------------------|------------|-------------------|
| 198B | Floyd loam, 1 to 4 percent slopes | 10.81 | 27.9% | | IIw | 89 | 74 | | | | | | | | | |
| 84 | Clyde silty clay loam, 0 to 3 percent slopes | 8.38 | 21.7% | | IIw | 88 | 77 | 4.4 | | 7 | 4.2 | 3 | 193.5 | 18 | 3.3 | 76.5 |
| 394C | Ostrander loam, 5 to 9 percent slopes | 7.62 | 19.7% | | IIIe | 83 | 69 | | | | | | | | | |
| 394B | Ostrander loam, 2 to 5 percent slopes | 5.44 | 14.1% | | Ile | 88 | 84 | | | | | | | | | |
| 177C | Saude loam, 5 to 9 percent slopes | 4.83 | 12.5% | | IIIe | 50 | 38 | | | | | | | | | |
| 83B | Kenyon loam, 2 to 5 percent slopes | 1.08 | 2.8% | | Ile | 90 | 84 | | | 11 | 6.6 | | 210 | | 3.9 | 91 |
| 83C2 | Kenyon loam, 5 to 9 percent slopes, eroded | 0.41 | 1.1% | | IIIe | 84 | 67 | | | 10.6 | 6.3 | | 212 | | 3.7 | 88 |
| 171D2 | Bassett loam, 9 to 14 percent slopes, eroded | 0.11 | 0.3% | | IIIe | 54 | 56 | | | 9.6 | 5.8 | | 162 | | 3.4 | 81 |
| Weighted Average | | | | | | 82.5 | 70.7 | 1 | | 2 | 1.2 | 0.6 | 50.5 | 3.9 | 0.9 | 20.3 |

**IA has updated the CSR values for each county to CSR2.

*c: Using Capabilities Class Dominant Condition Aggregation Method

Soils data provided by USDA and NRCS.