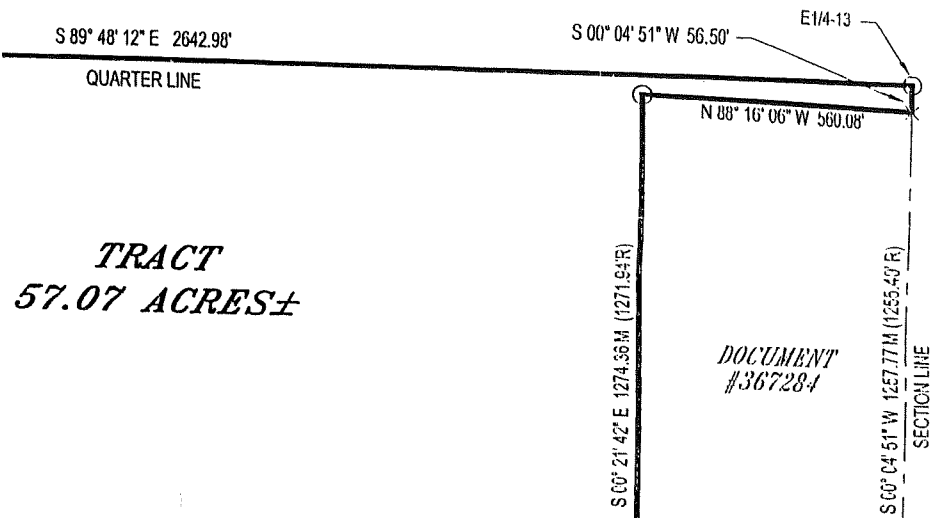
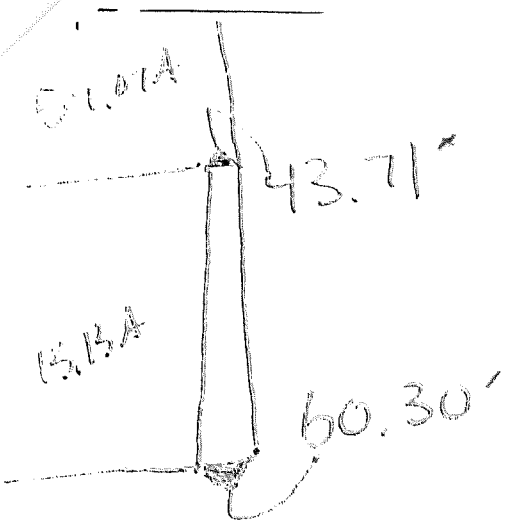
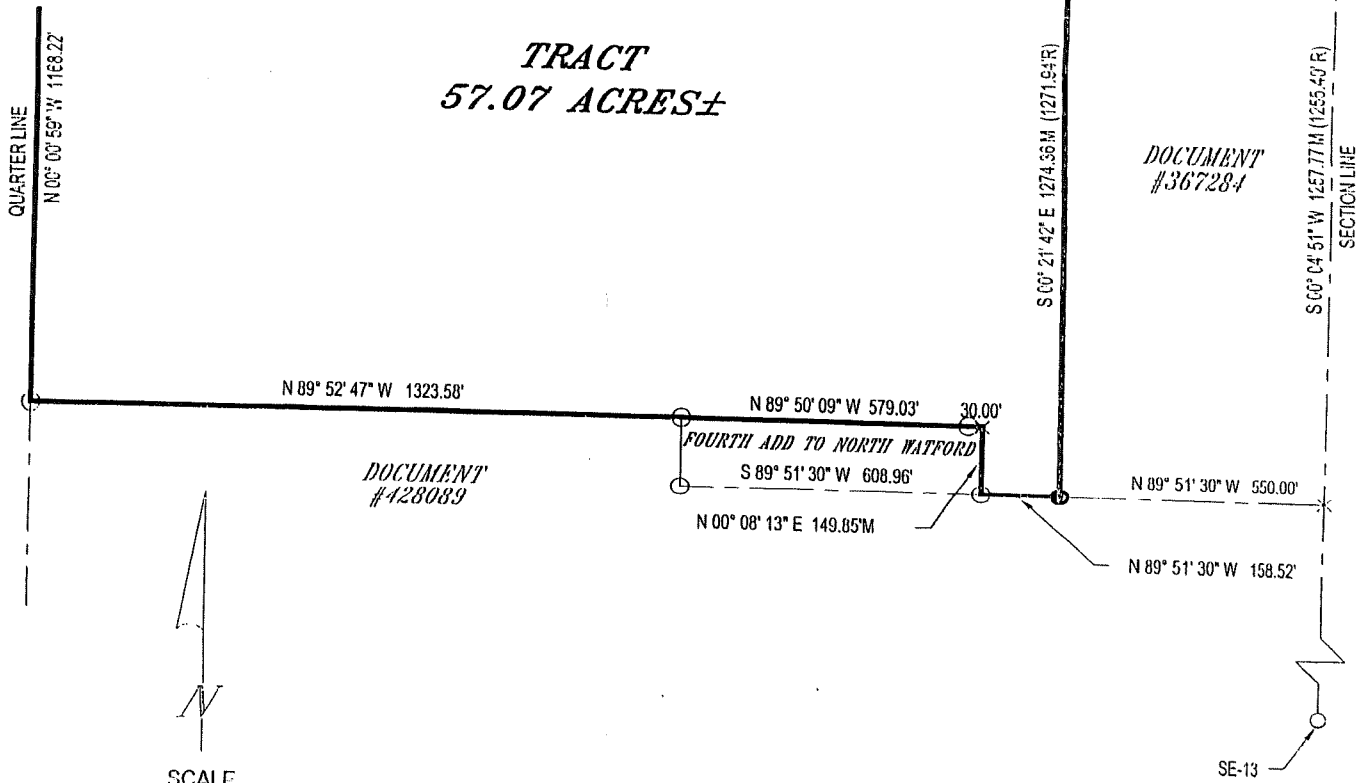


SURVEY PLAT
 A TRACT IN SE1/4
 SECTION 13
 T 150 N - R 99W
 MCKENZIE COUNTY, NORTH DAKOTA



TRACT
57.07 ACRES±

DOCUMENT
 #367284



DOCUMENT
 #428089

SCALE
 1" = 400'

- = PIN FOUND
- ⊕ = REBAR & CAP SET
- ⊗ = R.O.W. MARKER
- × = COMPUTED

444828

A TRACT OF LAND LOCATED IN THE SE1/4 OF SECTION 13, T150N, R99W, MCKENZIE COUNTY, NORTH DAKOTA.

BEGINNING AT THE EAST QUARTER CORNER OF SECTION 13; THENCE S 00° 04' 51" W, ALONG THE EAST SIDE OF SAID QUARTER, A DISTANCE OF 56.50 FEET; THENCE N 88° 47' 16" W, ALONG THE NORTHERLY SIDE OF TRACT DESCRIBED IN DOC. # 367284, A DISTANCE OF 560.08 FEET; THENCE S 00° 21' 42" E, ALONG THE WESTERLY SIDE OF DOC. #367284, A DISTANCE OF 1274.36 FEET; THENCE N 89° 51' 30" W, A DISTANCE OF 158.52 FEET; THENCE N 00° 08' 13" E, ALONG THE EAST SIDE OF THE FOURTH ADDITION TO NORTH WATFORD, A DISTANCE OF 149.85 FEET; THENCE N 89° 50' 09", ALONG THE NORTH SIDE OF SAID FOURTH ADDITION, A DISTANCE OF 609.03 FEET; THENCE N 89° 52' 47", ALONG THE NORTH SIDE OF TRACT DESCRIBED IN DOC. # 428089, A DISTANCE OF 1323.58 FEET; THENCE N 00° 00' 59" W, ALONG THE WEST LINE OF SAID QUARTER, A DISTANCE OF 1168.22 FEET; THENCE S 89° 48' 12" E, A DISTANCE OF 2642.98 FEET TO THE POINT OF BEGINNING.

SAID TRACT CONTAINS 57.07 ACRES MORE OR LESS AND IS SUBJECT TO ANY EXISTING EASEMENTS OR RIGHT-OF-WAY.