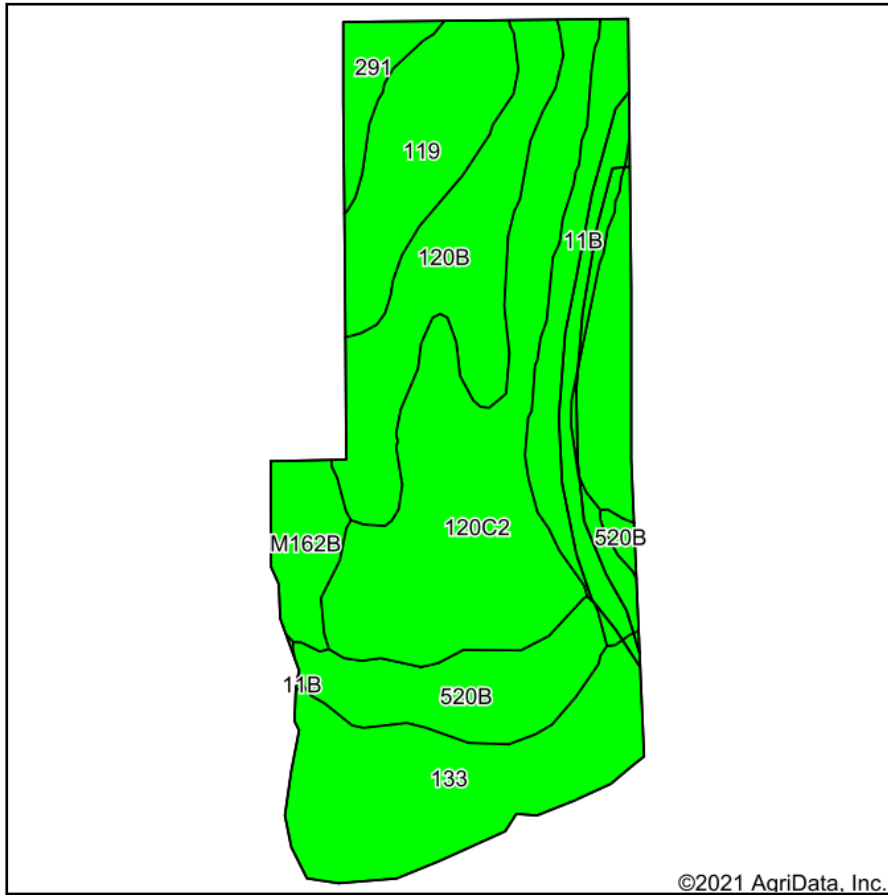
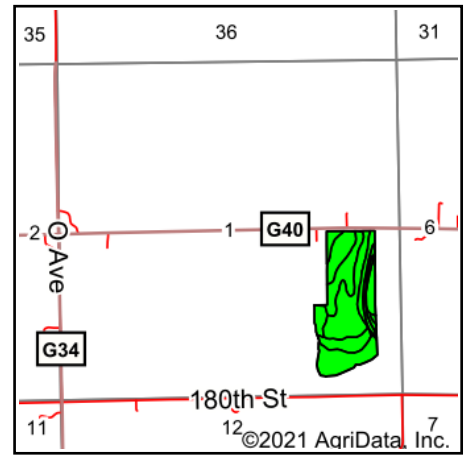


Soils Map



Soils data provided by USDA and NRCS.



State: **Iowa**
 County: **Louisa**
 Location: **1-75N-4W**
 Township: **Concord**
 Acres: **41.85**
 Date: **7/20/2021**



Maps Provided By:



© AgriData, Inc. 2021

www.AgriDataInc.com



Area Symbol: IA115, Soil Area Version: 24

| Code | Soil Description | Acres | Percent of field | CSR2 Legend | Non-Irr Class *c | CSR2** | CSR |
|------------------|---|-------|------------------|-------------|------------------|--------|-----|
| 120C2 | Tama silty clay loam, 5 to 9 percent slopes, eroded | 12.89 | 30.8% | | IIIe | 87 | 78 |
| 133 | Colo silty clay loam, 0 to 2 percent slopes, occasionally flooded | 7.18 | 17.2% | | IIw | 78 | 80 |
| 120B | Tama silty clay loam, 2 to 5 percent slopes | 6.02 | 14.4% | | Ile | 95 | 95 |
| 11B | Colo-Ely complex, 0 to 5 percent slopes | 4.53 | 10.8% | | IIw | 86 | 68 |
| 119 | Muscatine silty clay loam, 0 to 2 percent slopes | 4.41 | 10.5% | | Iw | 100 | 100 |
| 520B | Coppock silt loam, 2 to 5 percent slopes | 3.88 | 9.3% | | IIw | 80 | 60 |
| M162B | Downs silt loam, till plain, 2 to 5 percent slopes | 1.79 | 4.3% | | Ile | 90 | |
| 291 | Atterberry silt loam, 0 to 2 percent slopes | 1.15 | 2.7% | | Iw | 90 | 95 |
| Weighted Average | | | | | | 87.4 | *- |

**IA has updated the CSR values for each county to CSR2.

*- CSR weighted average cannot be calculated on the current soils data, use prior data version for csr values.

*c: Using Capabilities Class Dominant Condition Aggregation Method

Soils data provided by USDA and NRCS.