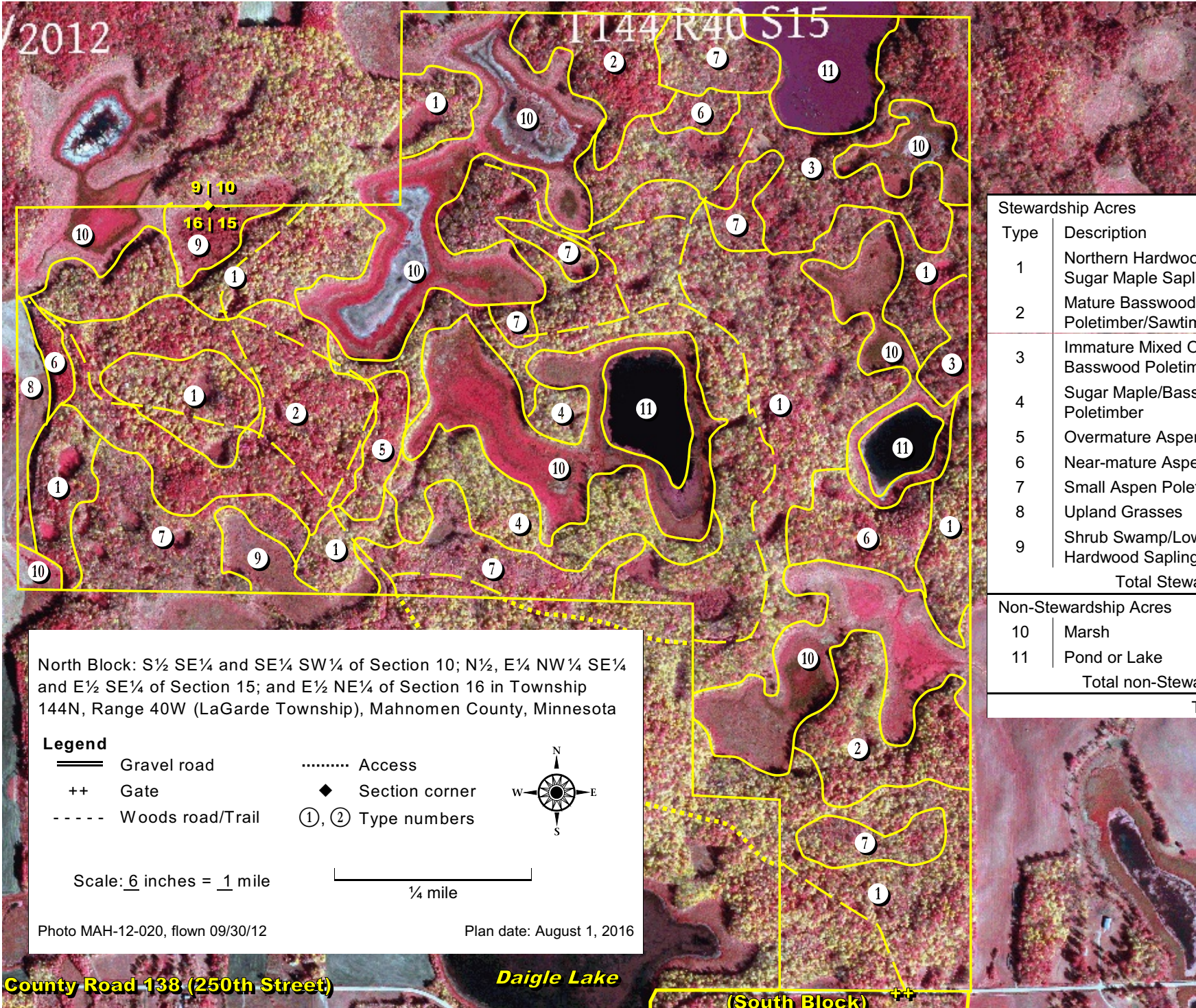


# Conservation Activity/Forest Stewardship Plan Map

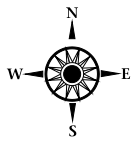
Viker Enterprises, Inc.



North Block: S½ SE¼ and SE¼ SW¼ of Section 10; N½, E¼ NW¼ SE¼ and E½ SE¼ of Section 15; and E½ NE¼ of Section 16 in Township 144N, Range 40W (LaGarde Township), Mahnomen County, Minnesota

**Legend**

- ==== Gravel road
- ++ Gate
- Woods road/Trail
- ..... Access
- ◆ Section corner
- ①, ② Type numbers



Scale: 6 inches = 1 mile

—————  
¼ mile

Photo MAH-12-020, flown 09/30/12

Plan date: August 1, 2016

Stewardship Acres		
Type	Description	Acres
1	Northern Hardwood Poletimber/ Sugar Maple Saplings	228.0
2	Mature Basswood/Red Oak Poletimber/Sawtimber	70.0
3	Immature Mixed Oak/ Basswood Poletimber	47.0
4	Sugar Maple/Basswood Poletimber	21.0
5	Overmature Aspen Poletimber	7.0
6	Near-mature Aspen Poletimber	21.0
7	Small Aspen Poletimber	48.0
8	Upland Grasses	4.0
9	Shrub Swamp/Lowland Hardwood Saplings	9.0
Total Stewardship acres:		455.0
Non-Stewardship Acres		
10	Marsh	134.0
11	Pond or Lake	31.0
Total non-Stewardship acres:		165.0
Total acreage:		620.0

**County Road 138 (250th Street)**

**Daigle Lake**

**(South Block)**