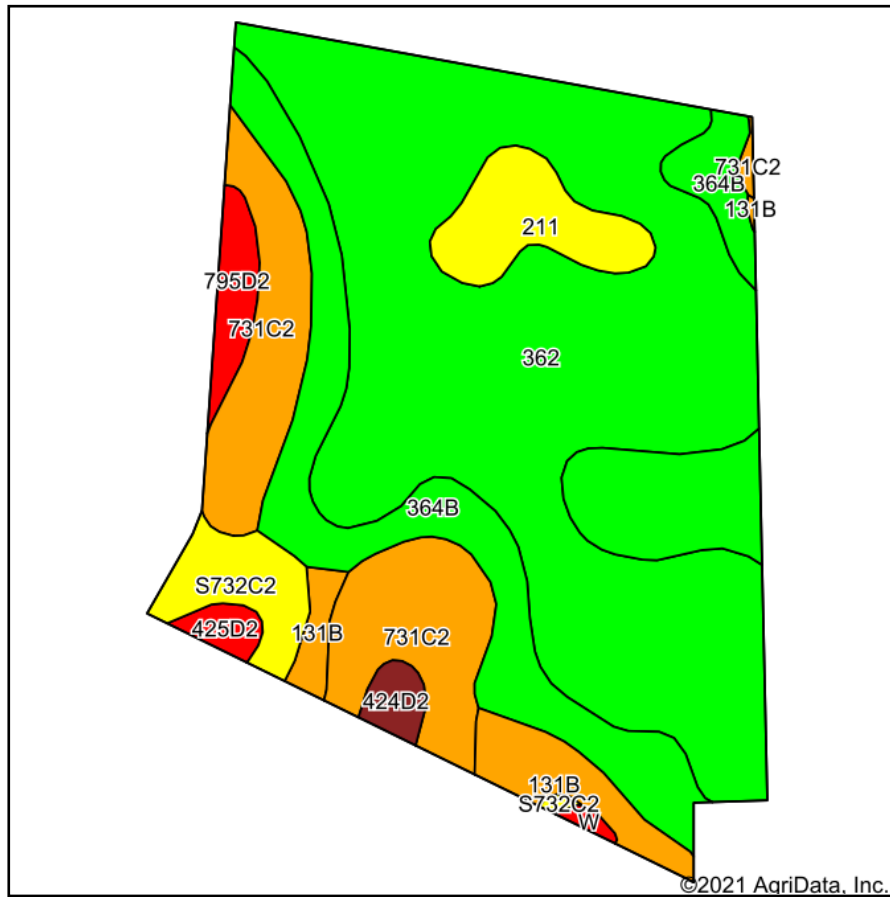
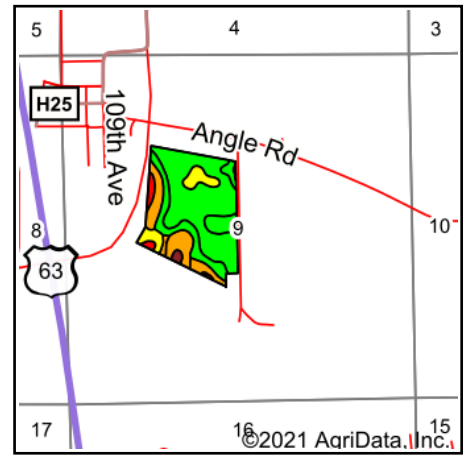


Soils Map



Soils data provided by USDA and NRCS.



State: **Iowa**
 County: **Wapello**
 Location: **9-72N-13W**
 Township: **Dahlonge**
 Acres: **55.07**
 Date: **3/19/2021**



Maps Provided By:



© AgriData, Inc. 2021

www.AgriDataInc.com



Area Symbol: IA179, Soil Area Version: 29

Code	Soil Description	Acres	Percent of field	CSR2 Legend	Non-Irr Class *c	CSR2**	CSR
362	Haig silt loam, 0 to 2 percent slopes	28.44	51.6%		IIw	83	70
364B	Grundy silt loam, 2 to 5 percent slopes	10.79	19.6%		IIe	74	75
731C2	Pershing silty clay loam, 5 to 9 percent slopes, moderately eroded	7.09	12.9%		IIIe	62	40
211	Edina silt loam, 0 to 1 percent slopes	2.44	4.4%		IIIw	59	60
131B	Pershing silt loam, 2 to 5 percent slopes	2.24	4.1%		IIIe	70	65
S732C2	Weller silty clay loam, 5 to 9 percent slopes, moderately eroded	1.91	3.5%		IIIe	59	
795D2	Ashgrove silty clay loam, 9 to 14 percent slopes, moderately eroded	1.02	1.9%		IVe	7	7
424D2	Lindley-Keswick loams, 9 to 14 percent slopes, moderately eroded	0.55	1.0%		IVe	27	15
425D2	Keswick loam, 9 to 14 percent slopes, moderately eroded	0.46	0.8%		IVe	9	5
W	Water	0.13	0.2%			0	0
Weighted Average						73.3	*-

**IA has updated the CSR values for each county to CSR2.

*- CSR weighted average cannot be calculated on the current soils data, use prior data version for csr values.

*c: Using Capabilities Class Dominant Condition Aggregation Method

Soils data provided by USDA and NRCS.