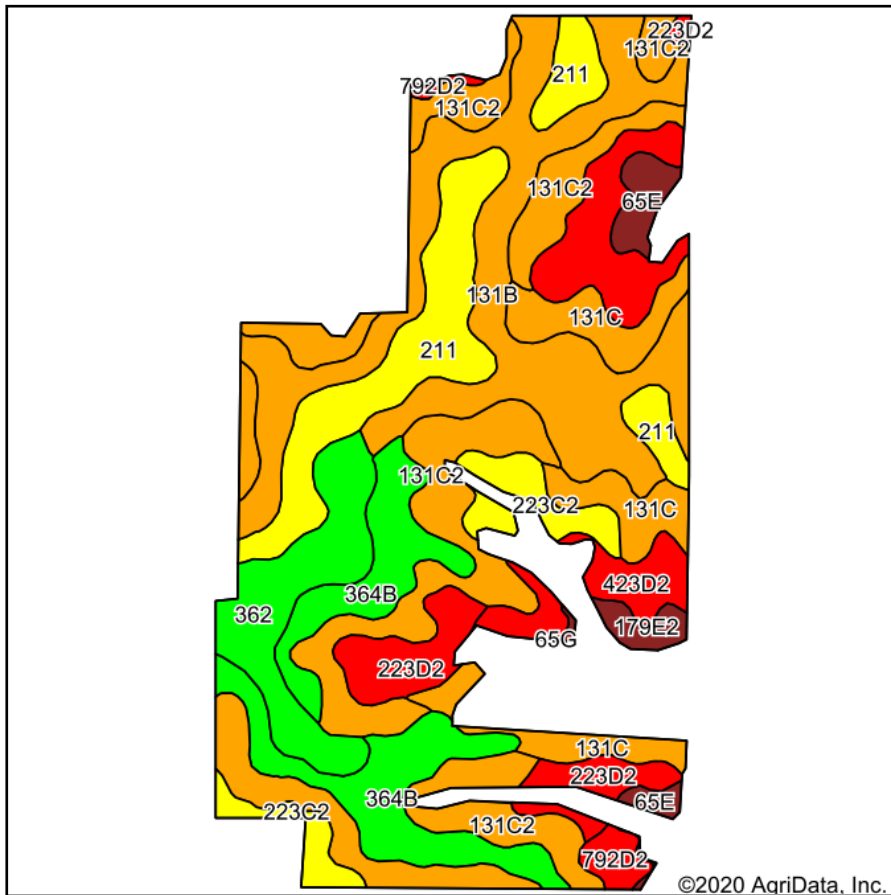
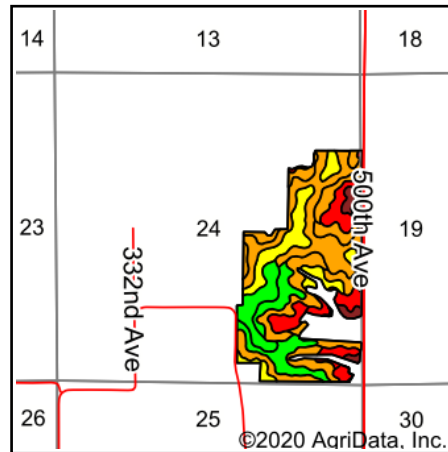


Soils Map



Soils data provided by USDA and NRCS.



State: **Iowa**
 County: **Lucas**
 Location: **24-72N-20W**
 Township: **Cedar**
 Acres: **139.71**
 Date: **12/31/2020**

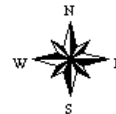


Maps Provided By:



© AgriData, Inc. 2020

www.AgriDataInc.com



| Code | Soil Description | Acres | Percent of field | CSR2 Legend | Non-Irr Class *c | CSR2** | CSR |
|-------------------------|---|-------|------------------|-------------|------------------|-------------|-------------|
| 131C2 | Pershing silty clay loam, 5 to 9 percent slopes, moderately eroded | 30.59 | 21.9% | | IIIe | 62 | 45 |
| 131B | Pershing silt loam, 2 to 5 percent slopes | 28.31 | 20.3% | | IIIe | 70 | 67 |
| 364B | Grundy silty clay loam, 2 to 5 percent slopes | 15.97 | 11.4% | | Ile | 72 | 75 |
| 211 | Edina silt loam, depressional, 0 to 1 percent slopes | 15.65 | 11.2% | | IIIw | 41 | 57 |
| 223D2 | Rinda silty clay loam, 9 to 14 percent slopes, moderately eroded | 13.43 | 9.6% | | IVe | 19 | 9 |
| 131C | Pershing silt loam, 5 to 9 percent slopes | 10.08 | 7.2% | | IIIe | 65 | 49 |
| 362 | Haig silt loam, 0 to 2 percent slopes | 9.97 | 7.1% | | IIw | 83 | 70 |
| 223C2 | Rinda silty clay loam, 5 to 9 percent slopes, moderately eroded | 5.42 | 3.9% | | IVw | 45 | 22 |
| 423D2 | Bucknell silty clay loam, 9 to 14 percent slopes, moderately eroded | 4.31 | 3.1% | | IVe | 6 | 13 |
| 65E | Lindley loam, 14 to 18 percent slopes | 2.70 | 1.9% | | VIe | 33 | 30 |
| 792D2 | Armstrong clay loam, 9 to 14 percent slopes, moderately eroded | 1.75 | 1.3% | | IVe | 5 | 13 |
| 179E2 | Gara clay loam, 14 to 18 percent slopes, moderately eroded | 1.53 | 1.1% | | VIe | 23 | 33 |
| Weighted Average | | | | | | 55.9 | 50.1 |

**IA has updated the CSR values for each county to CSR2.

*c: Using Capabilities Class Dominant Condition Aggregation Method
 Soils data provided by USDA and NRCS.