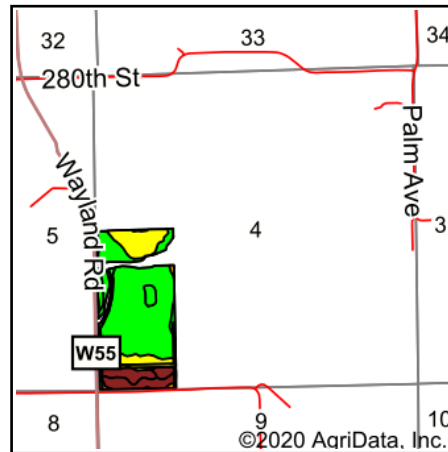
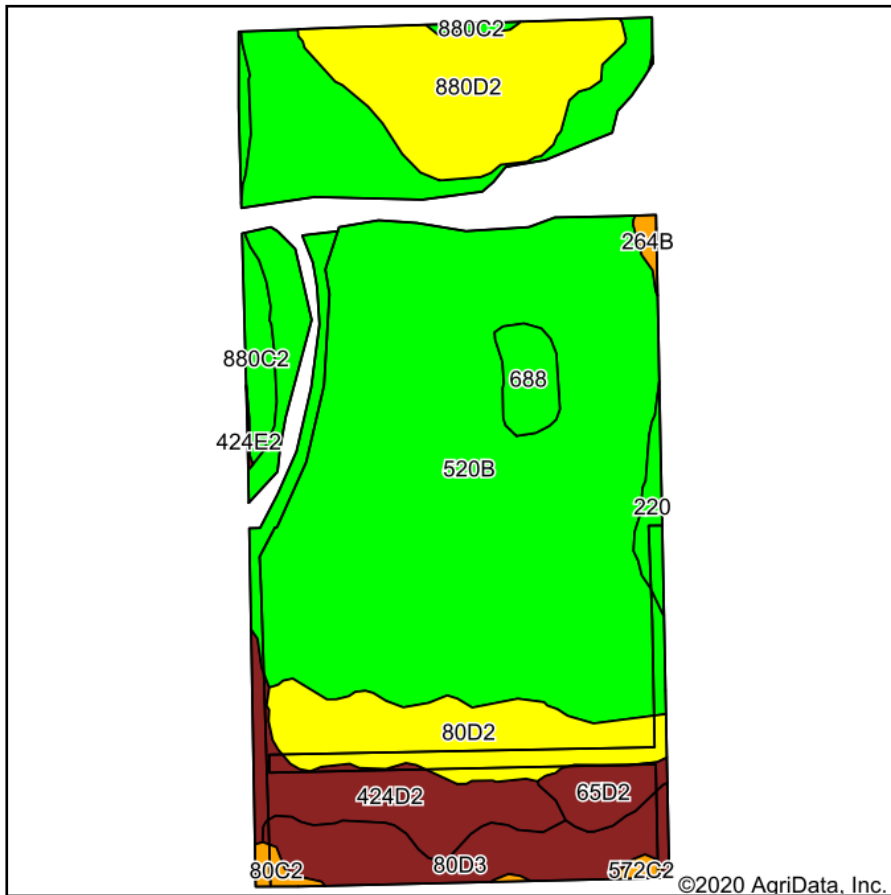


Soils Map

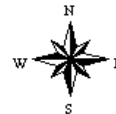


State: **Iowa**
 County: **Washington**
 Location: **4-74N-7W**
 Township: **Marion**
 Acres: **70.58**
 Date: **9/8/2020**



Maps Provided By:

 CUSTOMIZED ONLINE MAPPING
 © AgriData, Inc. 2020 www.AgriDataInc.com



Soils data provided by USDA and NRCS.

Area Symbol: IA183. Soil Area Version: 27		Acres	Percent of field	CSR2 Legend	Non-Irr Class *c	CSR2**	CSR
520B	Coppock silt loam, 2 to 5 percent slopes	43.83	62.1%		IIw	80	60
880D2	Clinton silt loam, terrace, 9 to 14 percent slopes, eroded	7.01	9.9%		IIIe	47	50
80D2	Clinton silt loam, 9 to 14 percent slopes, eroded	5.59	7.9%		IIIe	46	50
80D3	Clinton silty clay loam, 9 to 14 percent slopes, severely eroded	4.42	6.3%		IVe	39	45
424D2	Lindley-Keswick complex, 9 to 14 percent slopes, moderately eroded	4.20	6.0%		IVe	29	15
880C2	Clinton silt loam, terrace, 5 to 9 percent slopes, eroded	1.56	2.2%		IIIe	71	60
65D2	Lindley loam, 9 to 14 percent slopes, moderately eroded	1.26	1.8%		IVe	39	38
688	Kosztka silt loam, 0 to 2 percent slopes	1.21	1.7%		Iw	90	85
220	Nodaway silt loam, shallow loess, 0 to 2 percent slopes, occasionally flooded	0.75	1.1%		IIw	77	87
80C2	Clinton silt loam, 5 to 9 percent slopes, eroded	0.32	0.5%		IIIe	69	60
264B	Ainsworth silt loam, 1 to 5 percent slopes	0.22	0.3%		Ile	69	70
572C2	Inton silt loam, 5 to 9 percent slopes, moderately eroded	0.21	0.3%		IIIe	69	57
Weighted Average						67.5	54.9

**IA has updated the CSR values for each county to CSR2.
 *c: Using Capabilities Class Dominant Condition Aggregation Method
 Soils data provided by USDA and NRCS.