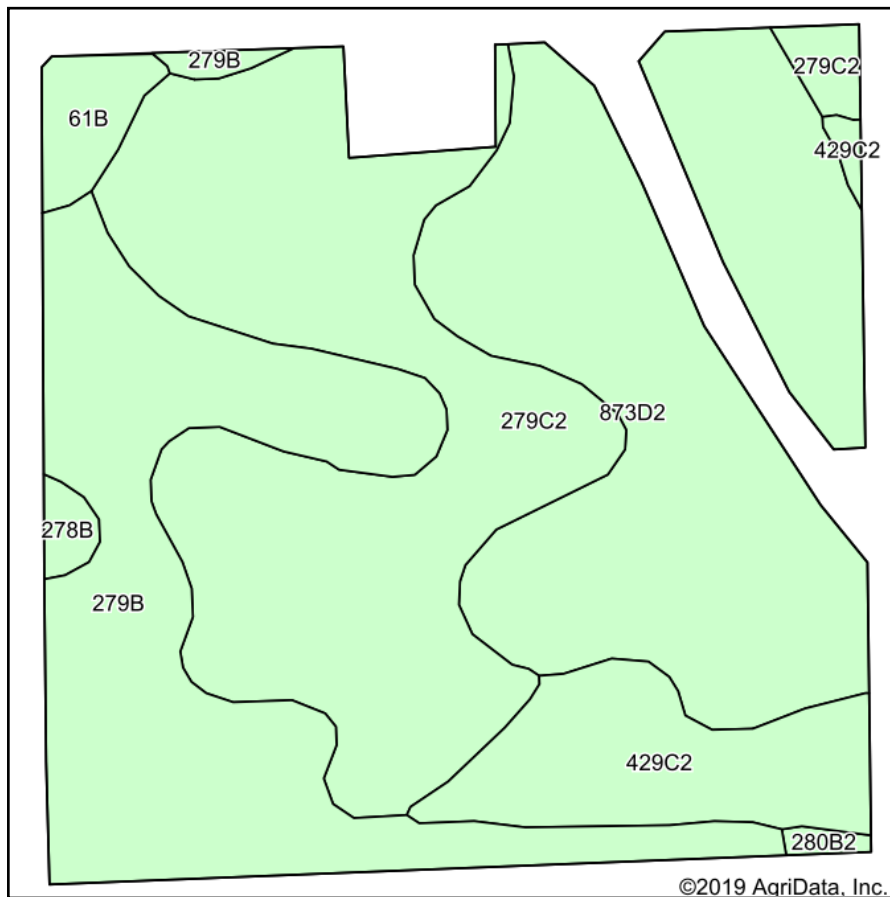
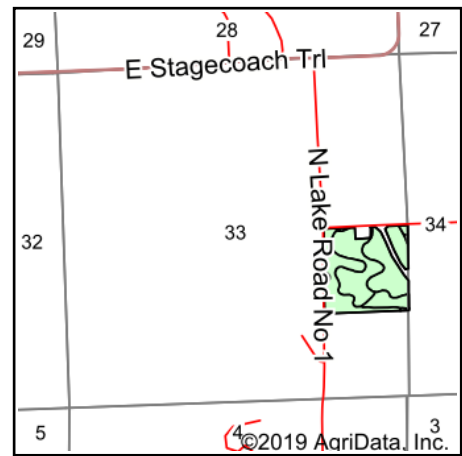


# Soils Map



Soils data provided by USDA and NRCS.



State: **Illinois**  
 County: **Jo Daviess**  
 Location: **33-29N-3E**  
 Township: **Apple River**  
 Acres: **38.07**  
 Date: **6/18/2020**



Maps Provided By:



Area Symbol: IL085, Soil Area Version: 16													
Code	Soil Description	Acres	Percent of field	Il. State Productivity Index Legend	Subsoil rooting <sup>a</sup>	Corn Bu/A	Soybeans Bu/A	Wheat Bu/A	Oats Bu/A <sup>b</sup>	Sorghum <sup>c</sup> Bu/A	Alfalfa <sup>d</sup> hay, T/A	Grass-legume <sup>e</sup> hay, T/A	Crop productivity index for optimum management
**873D2	Dunbarton-Dubuque silt loams, 7 to 15 percent slopes, moderately eroded	12.33	32.4%		UNF	**92	**31	**39	**49	0	0.00	**2.93	**71
**279C2	Rozetta silt loam, 5 to 10 percent slopes, eroded	12.00	31.5%		FAV	**153	**47	**60	**78	0	**4.90	0.00	**112
**279B	Rozetta silt loam, 2 to 5 percent slopes	9.34	24.5%		FAV	**162	**50	**64	**83	0	**5.22	0.00	**119
**429C2	Palsgrove silt loam, 5 to 10 percent slopes, moderately eroded	3.25	8.5%		FAV	**131	**43	**55	**68	0	**3.85	0.00	**98
**61B	Atterberry silt loam, 2 to 5 percent slopes	0.77	2.0%		FAV	**180	**55	**70	**97	0	0.00	**5.46	**131
**278B	Stronghurst silt loam, 2 to 5 percent slopes	0.26	0.7%		FAV	**169	**53	**65	**86	0	0.00	**5.22	**124
**280B2	Fayette silt loam, 2 to 6 percent slopes, moderately eroded	0.12	0.3%		FAV	**159	**50	**63	**81	0	**5.01	0.00	**116
Weighted Average						134.2	42.4	54	69.4	*	3.17	1.10	99.7

**Table: Optimum Crop Productivity Ratings for Illinois Soil by K.R. Olson and J.M. Lang, Office of Research, ACES, University of Illinois at Champaign-Urbana.** Version: 1/2/2012 Amended Table S2 B811

Crop yields and productivity indices for optimum management (B811) are maintained at the following NRES web site: <http://soilproductivity.nres.illinois.edu/>

\*\* Indexes adjusted for slope and erosion according to Bulletin 811 Table S3

<sup>a</sup> UNF = unfavorable; FAV = favorable

<sup>b</sup> Soils in the southern region were not rated for oats and are shown with a zero "0".

<sup>c</sup> Soils in the northern region or in both regions were not rated for grain sorghum and are shown with a zero "0".

<sup>d</sup> Soils in the poorly drained group were not rated for alfalfa and are shown with a zero "0".

<sup>e</sup> Soils in the well drained group were not rated for grass-legume and are shown with a zero "0".

\*c: Using Capabilities Class Dominant Condition Aggregation Method

Soils data provided by USDA and NRCS. Soils data provided by University of Illinois at Champaign-Urbana.