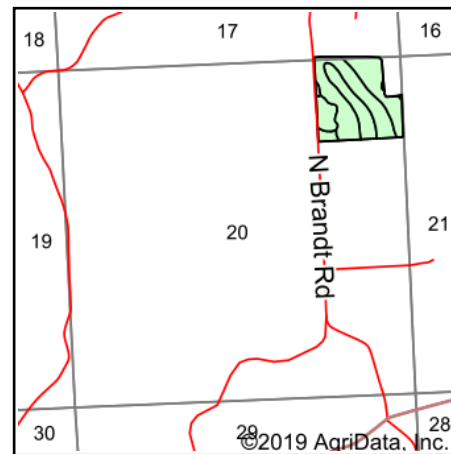
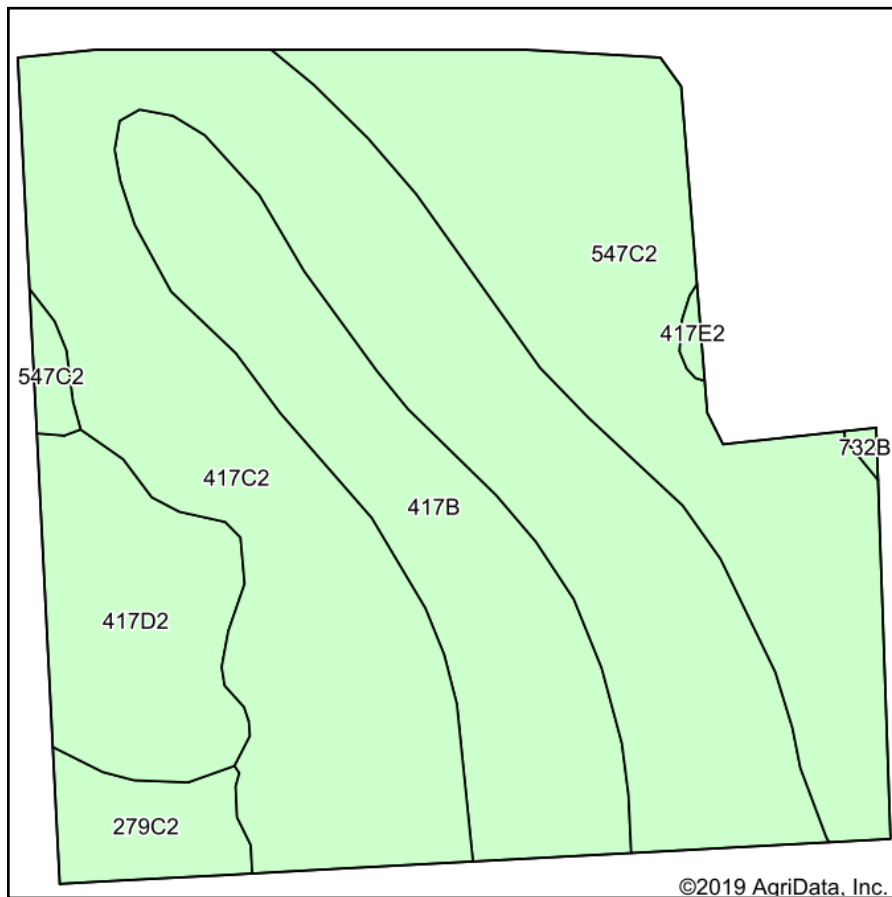


Soils Map



State: **Illinois**
 County: **Jo Daviess**
 Location: **21-28N-3E**
 Township: **Thompson**
 Acres: **35.74**
 Date: **6/11/2020**



Maps Provided By:
surety
 CUSTOMIZED ONLINE MAPPING
 © AgriData, Inc. 2019 www.AgriDataInc.com



Area Symbol: IL085, Soil Area Version: 16													
Code	Soil Description	Acres	Percent of field	Il. State Productivity Index Legend	Subsoil rooting ^a	Corn Bu/A	Soybeans Bu/A	Wheat Bu/A	Oats Bu/A ^b	Sorghum ^c Bu/A	Alfalfa ^d hay, T/A	Grass-legume ^e hay, T/A	Crop productivity index for optimum management
**417C2	Derinda silt loam, 5 to 10 percent slopes, eroded	16.08	45.0%		UNF	**114	**38	**46	**57	0	0.00	**3.38	**86
**547C2	Eleroy silt loam, 5 to 10 percent slopes, eroded	8.88	24.8%		FAV	**133	**44	**49	**65	0	**3.15	0.00	**98
**417B	Derinda silt loam, 2 to 5 percent slopes	6.18	17.3%		UNF	**126	**42	**50	**62	0	0.00	**3.72	**94
**417D2	Derinda silt loam, 10 to 18 percent slopes, eroded	3.29	9.2%		UNF	**107	**35	**43	**53	0	0.00	**3.16	**80
**279C2	Rozetta silt loam, 5 to 10 percent slopes, eroded	1.16	3.2%		FAV	**153	**47	**60	**78	0	**4.90	0.00	**112
**417E2	Derinda silt loam, 18 to 25 percent slopes, eroded	0.09	0.3%		UNF	**90	**30	**36	**45	0	0.00	**2.67	**67
**732B	Appleriver silt loam, 2 to 5 percent slopes	0.06	0.2%		FAV	**141	**46	**57	**70	0	0.00	**4.47	**104
Weighted Average						121.4	40.2	47.6	60.2	*	0.94	2.47	90.6

Table: Optimum Crop Productivity Ratings for Illinois Soil by K.R. Olson and J.M. Lang, Office of Research, ACES, University of Illinois at Champaign-Urbana. Version: 1/2/2012 Amended Table S2 B811

Crop yields and productivity indices for optimum management (B811) are maintained at the following NRES web site: <http://soilproductivity.nres.illinois.edu/>

** Indexes adjusted for slope and erosion according to Bulletin 811 Table S3

a UNF = unfavorable; FAV = favorable

b Soils in the southern region were not rated for oats and are shown with a zero "0".

c Soils in the northern region or in both regions were not rated for grain sorghum and are shown with a zero "0".

d Soils in the poorly drained group were not rated for alfalfa and are shown with a zero "0".

e Soils in the well drained group were not rated for grass-legume and are shown with a zero "0".

*c: Using Capabilities Class Dominant Condition Aggregation Method

Soils data provided by USDA and NRCS. Soils data provided by University of Illinois at Champaign-Urbana.