

Illinois  
Jo Daviess

U.S. Department of Agriculture  
Farm Service Agency

**FARM: 8028**  
**Prepared:** 6/12/20 11:26 AM  
**Crop Year:** 2020  
**Page:** 1 of 3

Report ID: FSA-156EZ

**Abbreviated 156 Farm Record**

DISCLAIMER: This is data extracted from the web farm database. Because of potential messaging failures in MIDAS, this data is not guaranteed to be an accurate and complete representation of data contained in the MIDAS system, which is the system of record for Farm Records.

| Operator Name       | Farm Identifier | Recon Number |
|---------------------|-----------------|--------------|
| ANDERSON ACRES, LLC |                 | 2018 - 76    |

**Farms Associated with Operator:**

1035, 1045, 2724, 3031, 3256, 3352, 4033, 4583, 4638, 4782, 4784, 4788, 5069, 5070, 5159, 5327, 6065, 6151, 6497, 6602, 7130, 7477, 8200, 8210, 8226,

**ARC/PLC G//F Eligibility:** Eligible

**CRP Contract Number(s):** None

| Farmland           | Cropland           | DCP Cropland           | WBP            | WRP/EWP | CRP Cropland | GRP | Farm Status | Number of Tracts |
|--------------------|--------------------|------------------------|----------------|---------|--------------|-----|-------------|------------------|
| 211.65             | 144.2              | 144.2                  | 0.0            | 0.0     | 0.0          | 0.0 | Active      | 5                |
| State Conservation | Other Conservation | Effective DCP Cropland | Double Cropped | MPL/FWP | Native Sod   |     |             |                  |
| 0.0                | 0.0                | 144.2                  | 0.0            | 0.0     | 0.0          |     |             |                  |

| ARC/PLC |              |        |             |                |                |
|---------|--------------|--------|-------------|----------------|----------------|
| PLC     | ARC-CO       | ARC-IC | PLC-Default | ARC-CO-Default | ARC-IC-Default |
| CORN    | OATS , SOYBN | NONE   | NONE        | NONE           | NONE           |

| Crop              | Base Acreage | PLC Yield | CCC-505 CRP Reduction |
|-------------------|--------------|-----------|-----------------------|
| OATS              | 5.0          | 58        | 0.0                   |
| CORN              | 93.19        | 130       | 0.0                   |
| SOYBEANS          | 8.91         | 44        | 0.0                   |
| Total Base Acres: | 107.1        |           |                       |

**Tract Number:** 1879      **Description** J4L-1, SE SEC 17, SEC 16 & 20, THOMPSON  
**FSA Physical Location :** Jo Daviess, IL      **ANSI Physical Location:** Jo Daviess, IL  
**BIA Range Unit Number:**  
**HEL Status:** HEL: conservation system is being actively applied  
**Wetland Status:** Wetland determinations not complete  
**WL Violations:** None

| Farmland           | Cropland           | DCP Cropland           | WBP                   | WRP/EWP | CRP Cropland | GRP |
|--------------------|--------------------|------------------------|-----------------------|---------|--------------|-----|
| 116.28             | 61.43              | 61.43                  | 0.0                   | 0.0     | 0.0          | 0.0 |
| State Conservation | Other Conservation | Effective DCP Cropland | Double Cropped        | MPL/FWP | Native Sod   |     |
| 0.0                | 0.0                | 61.43                  | 0.0                   | 0.0     | 0.0          |     |
| Crop               | Base Acreage       | PLC Yield              | CCC-505 CRP Reduction |         |              |     |
| CORN               | 50.99              | 143                    | 0.0                   |         |              |     |
| SOYBEANS           | 8.91               | 44                     | 0.0                   |         |              |     |
| Total Base Acres:  | 59.9               |                        |                       |         |              |     |

Illinois  
Jo Daviess

U.S. Department of Agriculture  
Farm Service Agency

**FARM: 8028**  
**Prepared:** 6/12/20 11:26 AM  
**Crop Year:** 2020

Report ID: FSA-156EZ

**Abbreviated 156 Farm Record**

Page: 2 of 3

DISCLAIMER: This is data extracted from the web farm database. Because of potential messaging failures in MIDAS, this data is not guaranteed to be an accurate and complete representation of data contained in the MIDAS system, which is the system of record for Farm Records.

**Owners:** ANDERSON ACRES

**Other Producers:** None

**Tract Number:** 3735      **Description** G3CBLO-3, NE SEC 16, NW SEC 15 GUILFORD TWP

**FSA Physical Location :** Jo Daviess, IL      **ANSI Physical Location:** Jo Daviess, IL

**BIA Range Unit Number:**

**HEL Status:** HEL: conservation system is being actively applied

**Wetland Status:** Tract contains a wetland or farmed wetland

**WL Violations:** None

| Farmland                 | Cropland           | DCP Cropland           | WBP                   | WRP/EWP | CRP Cropland | GRP |
|--------------------------|--------------------|------------------------|-----------------------|---------|--------------|-----|
| 57.78                    | 54.22              | 54.22                  | 0.0                   | 0.0     | 0.0          | 0.0 |
| State Conservation       | Other Conservation | Effective DCP Cropland | Double Cropped        | MPL/FWP | Native Sod   |     |
| 0.0                      | 0.0                | 54.22                  | 0.0                   | 0.0     | 0.0          |     |
| Crop                     | Base Acreage       | PLC Yield              | CCC-505 CRP Reduction |         |              |     |
| OATS                     | 5.0                | 58                     | 0.0                   |         |              |     |
| CORN                     | 31.6               | 112                    | 0.0                   |         |              |     |
| <b>Total Base Acres:</b> | 36.6               |                        |                       |         |              |     |

**Owners:** ANDERSON ACRES

**Other Producers:** GUILFORD FARM INC

**Tract Number:** 6200      **Description**

**FSA Physical Location :** Jo Daviess, IL      **ANSI Physical Location:** Jo Daviess, IL

**BIA Range Unit Number:**

**HEL Status:** HEL: conservation system is being actively applied

**Wetland Status:** Wetland determinations not complete

**WL Violations:** None

| Farmland           | Cropland           | DCP Cropland           | WBP            | WRP/EWP | CRP Cropland | GRP |
|--------------------|--------------------|------------------------|----------------|---------|--------------|-----|
| 23.94              | 16.88              | 16.88                  | 0.0            | 0.0     | 0.0          | 0.0 |
| State Conservation | Other Conservation | Effective DCP Cropland | Double Cropped | MPL/FWP | Native Sod   |     |
| 0.0                | 0.0                | 16.88                  | 0.0            | 0.0     | 0.0          |     |

**Owners:** ANDERSON ACRES

**Other Producers:** None

Illinois  
Jo Daviess

U.S. Department of Agriculture  
Farm Service Agency

**FARM: 8028**  
**Prepared:** 6/12/20 11:26 AM  
**Crop Year:** 2020  
**Page:** 3 of 3

Report ID: FSA-156EZ

### Abbreviated 156 Farm Record

DISCLAIMER: This is data extracted from the web farm database. Because of potential messaging failures in MIDAS, this data is not guaranteed to be an accurate and complete representation of data contained in the MIDAS system, which is the system of record for Farm Records.

Tract Number: 6201      **Description**

**FSA Physical Location :** Jo Daviess, IL      **ANSI Physical Location:** Jo Daviess, IL

**BIA Range Unit Number:**

**HEL Status:** HEL Determinations not complete

**Wetland Status:** Wetland determinations not complete

**WL Violations:** None

| Farmland           | Cropland           | DCP Cropland           | WBP            | WRP/EWP | CRP Cropland | GRP |
|--------------------|--------------------|------------------------|----------------|---------|--------------|-----|
| 1.75               | 0.0                | 0.0                    | 0.0            | 0.0     | 0.0          | 0.0 |
| State Conservation | Other Conservation | Effective DCP Cropland | Double Cropped | MPL/FWP | Native Sod   |     |
| 0.0                | 0.0                | 0.0                    | 0.0            | 0.0     | 0.0          |     |

**Owners:** ANDERSON ACRES

**Other Producers:** None

Tract Number: 6249      **Description**

**FSA Physical Location :** Jo Daviess, IL      **ANSI Physical Location:** Jo Daviess, IL

**BIA Range Unit Number:**

**HEL Status:** HEL Determinations not complete

**Wetland Status:** Tract contains a wetland or farmed wetland

**WL Violations:** None

| Farmland           | Cropland           | DCP Cropland           | WBP            | WRP/EWP | CRP Cropland | GRP |
|--------------------|--------------------|------------------------|----------------|---------|--------------|-----|
| 11.9               | 11.67              | 11.67                  | 0.0            | 0.0     | 0.0          | 0.0 |
| State Conservation | Other Conservation | Effective DCP Cropland | Double Cropped | MPL/FWP | Native Sod   |     |
| 0.0                | 0.0                | 11.67                  | 0.0            | 0.0     | 0.0          |     |

| Crop                     | Base Acreage | PLC Yield | CCC-505 CRP Reduction |
|--------------------------|--------------|-----------|-----------------------|
| CORN                     | 10.6         | 119       | 0.0                   |
| <b>Total Base Acres:</b> | 10.6         |           |                       |

**Owners:** ANDERSON ACRES

**Other Producers:** None

Illinois  
Jo Daviess

U.S. Department of Agriculture  
Farm Service Agency

**FARM: 8200**  
**Prepared:** 6/12/20 1:51 PM  
**Crop Year:** 2020  
**Page:** 1 of 10

Report ID: FSA-156EZ

### Abbreviated 156 Farm Record

DISCLAIMER: This is data extracted from the web farm database. Because of potential messaging failures in MIDAS, this data is not guaranteed to be an accurate and complete representation of data contained in the MIDAS system, which is the system of record for Farm Records.

| Operator Name       | Farm Identifier | Recon Number |
|---------------------|-----------------|--------------|
| ANDERSON ACRES, LLC |                 | 2018 - 237   |

**Farms Associated with Operator:**

1035, 1045, 2724, 3031, 3256, 3352, 4033, 4583, 4638, 4782, 4784, 4788, 5069, 5070, 5159, 5327, 6065, 6151, 6497, 6602, 7130, 7477, 8028, 8210, 8226,

**ARC/PLC G//F Eligibility:** Eligible

**CRP Contract Number(s):** 11238D, 11239B

| Farmland           | Cropland           | DCP Cropland           | WBP            | WRP/EWP | CRP Cropland | GRP | Farm Status | Number of Tracts |
|--------------------|--------------------|------------------------|----------------|---------|--------------|-----|-------------|------------------|
| 1105.62            | 796.39             | 796.39                 | 0.0            | 0.0     | 12.65        | 0.0 | Active      | 17               |
| State Conservation | Other Conservation | Effective DCP Cropland | Double Cropped | MPL/FWP | Native Sod   |     |             |                  |
| 0.0                | 0.0                | 783.74                 | 0.0            | 0.0     | 0.0          |     |             |                  |

| ARC/PLC     |              |        |             |                |                |
|-------------|--------------|--------|-------------|----------------|----------------|
| PLC         | ARC-CO       | ARC-IC | PLC-Default | ARC-CO-Default | ARC-IC-Default |
| WHEAT, CORN | OATS , SOYBN | NONE   | NONE        | NONE           | NONE           |

| Crop                     | Base Acreage | PLC Yield | CCC-505 CRP Reduction |
|--------------------------|--------------|-----------|-----------------------|
| WHEAT                    | 3.3          | 47        | 0.0                   |
| OATS                     | 13.4         | 55        | 0.0                   |
| CORN                     | 602.3        | 136       | 0.0                   |
| SOYBEANS                 | 70.6         | 44        | 0.0                   |
| <b>Total Base Acres:</b> | 689.6        |           |                       |

**Tract Number:** 3622      **Description** G3TC-LO-2, NW SEC 3 GUILFORD

**FSA Physical Location :** Jo Daviess, IL      **ANSI Physical Location:** Jo Daviess, IL

**BIA Range Unit Number:**

**HEL Status:** HEL: conservation system is being actively applied

**Wetland Status:** Wetland determinations not complete

**WL Violations:** None

| Farmland           | Cropland           | DCP Cropland           | WBP            | WRP/EWP | CRP Cropland | GRP |
|--------------------|--------------------|------------------------|----------------|---------|--------------|-----|
| 5.76               | 5.76               | 5.76                   | 0.0            | 0.0     | 0.0          | 0.0 |
| State Conservation | Other Conservation | Effective DCP Cropland | Double Cropped | MPL/FWP | Native Sod   |     |
| 0.0                | 0.0                | 5.76                   | 0.0            | 0.0     | 0.0          |     |

| Crop                     | Base Acreage | PLC Yield | CCC-505 CRP Reduction |
|--------------------------|--------------|-----------|-----------------------|
| CORN                     | 4.8          | 136       | 0.0                   |
| <b>Total Base Acres:</b> | 4.8          |           |                       |

**Owners:** ANDERSON, LARRY

ANDERSON, VIRGINIA L

Illinois  
Jo Daviess

U.S. Department of Agriculture  
Farm Service Agency

**FARM: 8200**  
**Prepared:** 6/12/20 1:51 PM  
**Crop Year:** 2020  
**Page:** 2 of 10

Report ID: FSA-156EZ

### Abbreviated 156 Farm Record

DISCLAIMER: This is data extracted from the web farm database. Because of potential messaging failures in MIDAS, this data is not guaranteed to be an accurate and complete representation of data contained in the MIDAS system, which is the system of record for Farm Records.

Other Producers: None

Tract Number: 4380      Description H2L-LO-3, W 1/2 SEC 1, NE SEC 1, GUILFORD TWP

FSA Physical Location : Jo Daviess, IL      ANSI Physical Location: Jo Daviess, IL

BIA Range Unit Number:

HEL Status: HEL: conservation system is being actively applied

Wetland Status: Tract contains a wetland or farmed wetland

WL Violations: None

| Farmland           | Cropland           | DCP Cropland           | WBP            | WRP/EWP | CRP Cropland | GRP |
|--------------------|--------------------|------------------------|----------------|---------|--------------|-----|
| 128.49             | 48.15              | 48.15                  | 0.0            | 0.0     | 0.0          | 0.0 |
| State Conservation | Other Conservation | Effective DCP Cropland | Double Cropped | MPL/FWP | Native Sod   |     |
| 0.0                | 0.0                | 48.15                  | 0.0            | 0.0     | 0.0          |     |

| Crop                     | Base Acreage | PLC Yield | CCC-505 CRP Reduction |
|--------------------------|--------------|-----------|-----------------------|
| OATS                     | 8.0          | 52        | 0.0                   |
| CORN                     | 22.2         | 136       | 0.0                   |
| SOYBEANS                 | 9.5          | 44        | 0.0                   |
| <b>Total Base Acres:</b> | 39.7         |           |                       |

Owners: ANDERSON REVOCABLE TRUST NUMBER 3

Other Producers: None

Tract Number: 5127      Description SEC 18 AND 19 THOMPSON TWP

FSA Physical Location : Jo Daviess, IL      ANSI Physical Location: Jo Daviess, IL

BIA Range Unit Number:

HEL Status: HEL Determinations not complete

Wetland Status: Wetland determinations not complete

WL Violations: None

| Farmland           | Cropland           | DCP Cropland           | WBP            | WRP/EWP | CRP Cropland | GRP |
|--------------------|--------------------|------------------------|----------------|---------|--------------|-----|
| 99.55              | 70.0               | 70.0                   | 0.0            | 0.0     | 11.06        | 0.0 |
| State Conservation | Other Conservation | Effective DCP Cropland | Double Cropped | MPL/FWP | Native Sod   |     |
| 0.0                | 0.0                | 58.94                  | 0.0            | 0.0     | 0.0          |     |

| Crop                     | Base Acreage | PLC Yield | CCC-505 CRP Reduction |
|--------------------------|--------------|-----------|-----------------------|
| CORN                     | 58.7         | 136       | 0.0                   |
| <b>Total Base Acres:</b> | 58.7         |           |                       |

Owners: ANDERSON ACRES

Illinois  
Jo Daviess

U.S. Department of Agriculture  
Farm Service Agency

**FARM: 8200**  
**Prepared:** 6/12/20 1:51 PM  
**Crop Year:** 2020  
**Page:** 3 of 10

Report ID: FSA-156EZ

### Abbreviated 156 Farm Record

DISCLAIMER: This is data extracted from the web farm database. Because of potential messaging failures in MIDAS, this data is not guaranteed to be an accurate and complete representation of data contained in the MIDAS system, which is the system of record for Farm Records.

Other Producers: None

Tract Number: 6243      Description Thompson Twp Section 18

FSA Physical Location : Jo Daviess, IL      ANSI Physical Location: Jo Daviess, IL

BIA Range Unit Number:

HEL Status: HEL Determinations not complete

Wetland Status: Tract contains a wetland or farmed wetland

WL Violations: None

| Farmland           | Cropland           | DCP Cropland           | WBP                   | WRP/EWP | CRP Cropland | GRP |
|--------------------|--------------------|------------------------|-----------------------|---------|--------------|-----|
| 21.0               | 19.56              | 19.56                  | 0.0                   | 0.0     | 1.59         | 0.0 |
| State Conservation | Other Conservation | Effective DCP Cropland | Double Cropped        | MPL/FWP | Native Sod   |     |
| 0.0                | 0.0                | 17.97                  | 0.0                   | 0.0     | 0.0          |     |
|                    |                    |                        |                       |         |              |     |
| Crop               | Base Acreage       | PLC Yield              | CCC-505 CRP Reduction |         |              |     |
| CORN               | 15.9               | 136                    | 0.0                   |         |              |     |
| SOYBEANS           | 1.3                | 44                     | 0.0                   |         |              |     |
| Total Base Acres:  | 17.2               |                        |                       |         |              |     |

Owners: ANDERSON ACRES

Other Producers: None

Tract Number: 6794      Description Guilford Twp Sec 3

FSA Physical Location : Jo Daviess, IL      ANSI Physical Location: Jo Daviess, IL

BIA Range Unit Number:

HEL Status: HEL: conservation system is being actively applied

Recon Number

Wetland Status: Wetland determinations not complete

2018 - 230

WL Violations: None

| Farmland           | Cropland           | DCP Cropland           | WBP                   | WRP/EWP | CRP Cropland | GRP |
|--------------------|--------------------|------------------------|-----------------------|---------|--------------|-----|
| 59.77              | 58.97              | 58.97                  | 0.0                   | 0.0     | 0.0          | 0.0 |
| State Conservation | Other Conservation | Effective DCP Cropland | Double Cropped        | MPL/FWP | Native Sod   |     |
| 0.0                | 0.0                | 58.97                  | 0.0                   | 0.0     | 0.0          |     |
|                    |                    |                        |                       |         |              |     |
| Crop               | Base Acreage       | PLC Yield              | CCC-505 CRP Reduction |         |              |     |
| CORN               | 53.4               | 136                    | 0.0                   |         |              |     |
| SOYBEANS           | 2.0                | 44                     | 0.0                   |         |              |     |
| Total Base Acres:  | 55.4               |                        |                       |         |              |     |

Owners: GEORGE AND CAROL ANDERSON IRREVOCABLE TRUST

Illinois  
Jo Daviess

U.S. Department of Agriculture  
Farm Service Agency

**FARM: 8200**  
**Prepared:** 6/12/20 1:51 PM  
**Crop Year:** 2020  
**Page:** 4 of 10

Report ID: FSA-156EZ

### Abbreviated 156 Farm Record

DISCLAIMER: This is data extracted from the web farm database. Because of potential messaging failures in MIDAS, this data is not guaranteed to be an accurate and complete representation of data contained in the MIDAS system, which is the system of record for Farm Records.

Other Producers: None

Tract Number: 6796      **Description** Guilford Twp Sec 3

FSA Physical Location : Jo Daviess, IL      **ANSI Physical Location:** Jo Daviess, IL

BIA Range Unit Number:

HEL Status: HEL: conservation system is being actively applied

**Recon Number**  
2018 - 230

Wetland Status: Wetland determinations not complete

WL Violations: None

| Farmland           | Cropland           | DCP Cropland           | WBP            | WRP/EWP | CRP Cropland | GRP |
|--------------------|--------------------|------------------------|----------------|---------|--------------|-----|
| 15.38              | 0.0                | 0.0                    | 0.0            | 0.0     | 0.0          | 0.0 |
| State Conservation | Other Conservation | Effective DCP Cropland | Double Cropped | MPL/FWP | Native Sod   |     |
| 0.0                | 0.0                | 0.0                    | 0.0            | 0.0     | 0.0          |     |

Owners: ANDERSON, LARRY

Other Producers: None

Tract Number: 6797      **Description** Guilford Twp Sec 3

FSA Physical Location : Jo Daviess, IL      **ANSI Physical Location:** Jo Daviess, IL

BIA Range Unit Number:

HEL Status: NHEL: no agricultural commodity planted on undetermined fields

**Recon Number**  
2018 - 230

Wetland Status: Wetland determinations not complete

WL Violations: None

| Farmland           | Cropland           | DCP Cropland           | WBP            | WRP/EWP | CRP Cropland | GRP |
|--------------------|--------------------|------------------------|----------------|---------|--------------|-----|
| 1.8                | 0.0                | 0.0                    | 0.0            | 0.0     | 0.0          | 0.0 |
| State Conservation | Other Conservation | Effective DCP Cropland | Double Cropped | MPL/FWP | Native Sod   |     |
| 0.0                | 0.0                | 0.0                    | 0.0            | 0.0     | 0.0          |     |

Owners: ANDERSON, LARRY

Other Producers: None

Illinois  
Jo Daviess

U.S. Department of Agriculture  
Farm Service Agency

**FARM: 8200**  
**Prepared:** 6/12/20 1:51 PM  
**Crop Year:** 2020  
**Page:** 5 of 10

Report ID: FSA-156EZ

### Abbreviated 156 Farm Record

DISCLAIMER: This is data extracted from the web farm database. Because of potential messaging failures in MIDAS, this data is not guaranteed to be an accurate and complete representation of data contained in the MIDAS system, which is the system of record for Farm Records.

**Tract Number:** 6804      **Description** Guilford Twp Sec 2

**FSA Physical Location :** Jo Daviess, IL      **ANSI Physical Location:** Jo Daviess, IL

**BIA Range Unit Number:**

**HEL Status:** NHEL: no agricultural commodity planted on undetermined fields

**Recon Number**

**Wetland Status:** Tract contains a wetland or farmed wetland

2018 - 231

**WL Violations:** None

| Farmland           | Cropland           | DCP Cropland           | WBP            | WRP/EWP | CRP Cropland | GRP |
|--------------------|--------------------|------------------------|----------------|---------|--------------|-----|
| 1.65               | 0.0                | 0.0                    | 0.0            | 0.0     | 0.0          | 0.0 |
| State Conservation | Other Conservation | Effective DCP Cropland | Double Cropped | MPL/FWP | Native Sod   |     |
| 0.0                | 0.0                | 0.0                    | 0.0            | 0.0     | 0.0          |     |

**Owners:** ANDERSON, CARL L

**Other Producers:** None

**Tract Number:** 6806      **Description** Guilford Twp Sec 2

**FSA Physical Location :** Jo Daviess, IL      **ANSI Physical Location:** Jo Daviess, IL

**BIA Range Unit Number:**

**HEL Status:** HEL: conservation system is being actively applied

**Recon Number**

**Wetland Status:** Tract contains a wetland or farmed wetland

2018 - 231

**WL Violations:** None

| Farmland           | Cropland           | DCP Cropland           | WBP            | WRP/EWP | CRP Cropland | GRP |
|--------------------|--------------------|------------------------|----------------|---------|--------------|-----|
| 160.0              | 71.72              | 71.72                  | 0.0            | 0.0     | 0.0          | 0.0 |
| State Conservation | Other Conservation | Effective DCP Cropland | Double Cropped | MPL/FWP | Native Sod   |     |
| 0.0                | 0.0                | 71.72                  | 0.0            | 0.0     | 0.0          |     |

| Crop                     | Base Acreage | PLC Yield | CCC-505 CRP Reduction |
|--------------------------|--------------|-----------|-----------------------|
| CORN                     | 62.1         | 136       | 0.0                   |
| SOYBEANS                 | 9.3          | 44        | 0.0                   |
| <b>Total Base Acres:</b> | 71.4         |           |                       |

**Owners:** GEORGE AND CAROL ANDERSON IRREVOCABLE TRUST

**Other Producers:** None



Illinois  
Jo Daviess

U.S. Department of Agriculture  
Farm Service Agency

**FARM: 8200**  
**Prepared:** 6/12/20 1:51 PM  
**Crop Year:** 2020  
**Page:** 6 of 10

Report ID: FSA-156EZ

### Abbreviated 156 Farm Record

DISCLAIMER: This is data extracted from the web farm database. Because of potential messaging failures in MIDAS, this data is not guaranteed to be an accurate and complete representation of data contained in the MIDAS system, which is the system of record for Farm Records.

**Tract Number:** 6807      **Description** scales Mound Twp Sec 34 & 35

**FSA Physical Location :** Jo Daviess, IL      **ANSI Physical Location:** Jo Daviess, IL

**BIA Range Unit Number:**

**HEL Status:** HEL: conservation system is being actively applied

**Recon Number**

**Wetland Status:** Tract contains a wetland or farmed wetland

2018 - 232

**WL Violations:** None

| Farmland           | Cropland           | DCP Cropland           | WBP            | WRP/EWP | CRP Cropland | GRP |
|--------------------|--------------------|------------------------|----------------|---------|--------------|-----|
| 73.36              | 52.2               | 52.2                   | 0.0            | 0.0     | 0.0          | 0.0 |
| State Conservation | Other Conservation | Effective DCP Cropland | Double Cropped | MPL/FWP | Native Sod   |     |
| 0.0                | 0.0                | 52.2                   | 0.0            | 0.0     | 0.0          |     |

| Crop                     | Base Acreage | PLC Yield | CCC-505 CRP Reduction |
|--------------------------|--------------|-----------|-----------------------|
| WHEAT                    | 1.2          | 47        | 0.0                   |
| CORN                     | 47.41        | 136       | 0.0                   |
| SOYBEANS                 | 3.08         | 44        | 0.0                   |
| <b>Total Base Acres:</b> | 51.69        |           |                       |

**Owners:** ANDERSON, NEIL T

**Other Producers:** None

**Tract Number:** 6808      **Description** Sclaes Mound Twp Sec 34

**FSA Physical Location :** Jo Daviess, IL      **ANSI Physical Location:** Jo Daviess, IL

**BIA Range Unit Number:**

**HEL Status:** HEL: conservation system is being actively applied

**Recon Number**

**Wetland Status:** Tract contains a wetland or farmed wetland

2018 - 232

**WL Violations:** None

| Farmland           | Cropland           | DCP Cropland           | WBP            | WRP/EWP | CRP Cropland | GRP |
|--------------------|--------------------|------------------------|----------------|---------|--------------|-----|
| 51.56              | 39.29              | 39.29                  | 0.0            | 0.0     | 0.0          | 0.0 |
| State Conservation | Other Conservation | Effective DCP Cropland | Double Cropped | MPL/FWP | Native Sod   |     |
| 0.0                | 0.0                | 39.29                  | 0.0            | 0.0     | 0.0          |     |

| Crop     | Base Acreage | PLC Yield | CCC-505 CRP Reduction |
|----------|--------------|-----------|-----------------------|
| WHEAT    | 0.9          | 47        | 0.0                   |
| CORN     | 35.69        | 136       | 0.0                   |
| SOYBEANS | 2.32         | 44        | 0.0                   |

Illinois  
Jo Daviess

U.S. Department of Agriculture  
Farm Service Agency

**FARM: 8200**  
**Prepared:** 6/12/20 1:51 PM  
**Crop Year:** 2020  
**Page:** 7 of 10

Report ID: FSA-156EZ

**Abbreviated 156 Farm Record**

DISCLAIMER: This is data extracted from the web farm database. Because of potential messaging failures in MIDAS, this data is not guaranteed to be an accurate and complete representation of data contained in the MIDAS system, which is the system of record for Farm Records.

| Crop              | Base<br>Acreage | PLC<br>Yield | CCC-505<br>CRP Reduction |
|-------------------|-----------------|--------------|--------------------------|
| Total Base Acres: | 38.91           |              |                          |

**Owners:** GEORGE AND CAROL ANDERSON IRREVOCABLE TRUST

**Other Producers:** None

**Tract Number:** 6809      **Description** Scales Mound Twp Sec 22  
**FSA Physical Location :** Jo Daviess, IL      **ANSI Physical Location:** Jo Daviess, IL

**BIA Range Unit Number:**

**HEL Status:** HEL: conservation system is being actively applied

**Recon Number**

**Wetland Status:** Tract contains a wetland or farmed wetland

2018 - 233

**WL Violations:** None

| Farmland              | Cropland              | DCP Cropland              | WBP               | WRP/EWP | CRP<br>Cropland | GRP |
|-----------------------|-----------------------|---------------------------|-------------------|---------|-----------------|-----|
| 137.2                 | 120.4                 | 120.4                     | 0.0               | 0.0     | 0.0             | 0.0 |
| State<br>Conservation | Other<br>Conservation | Effective<br>DCP Cropland | Double<br>Cropped | MPL/FWP | Native<br>Sod   |     |
| 0.0                   | 0.0                   | 120.4                     | 0.0               | 0.0     | 0.0             |     |

| Crop              | Base<br>Acreage | PLC<br>Yield | CCC-505<br>CRP Reduction |
|-------------------|-----------------|--------------|--------------------------|
| CORN              | 87.11           | 136          | 0.0                      |
| SOYBEANS          | 7.13            | 44           | 0.0                      |
| Total Base Acres: | 94.24           |              |                          |

**Owners:** GEORGE AND CAROL ANDERSON IRREVOCABLE TRUST

**Other Producers:** None

Illinois  
Jo Daviess

U.S. Department of Agriculture  
Farm Service Agency

**FARM: 8200**  
**Prepared:** 6/12/20 1:51 PM  
**Crop Year:** 2020  
**Page:** 8 of 10

Report ID: FSA-156EZ

**Abbreviated 156 Farm Record**

DISCLAIMER: This is data extracted from the web farm database. Because of potential messaging failures in MIDAS, this data is not guaranteed to be an accurate and complete representation of data contained in the MIDAS system, which is the system of record for Farm Records.

**Tract Number:** 6814      **Description** Scales Mound Twp Sec 22

**FSA Physical Location :** Jo Daviess, IL      **ANSI Physical Location:** Jo Daviess, IL

**BIA Range Unit Number:**

**HEL Status:** HEL: conservation system is being actively applied

**Recon Number**

**Wetland Status:** Tract contains a wetland or farmed wetland

2018 - 233

**WL Violations:** None

| Farmland           | Cropland           | DCP Cropland           | WBP            | WRP/EWP | CRP Cropland | GRP |
|--------------------|--------------------|------------------------|----------------|---------|--------------|-----|
| 8.46               | 7.94               | 7.94                   | 0.0            | 0.0     | 0.0          | 0.0 |
| State Conservation | Other Conservation | Effective DCP Cropland | Double Cropped | MPL/FWP | Native Sod   |     |
| 0.0                | 0.0                | 7.94                   | 0.0            | 0.0     | 0.0          |     |

| Crop                     | Base Acreage | PLC Yield | CCC-505 CRP Reduction |
|--------------------------|--------------|-----------|-----------------------|
| CORN                     | 5.79         | 136       | 0.0                   |
| SOYBEANS                 | 0.47         | 44        | 0.0                   |
| <b>Total Base Acres:</b> | 6.26         |           |                       |

**Owners:** GEORGE AND CAROL ANDERSON IRREVOCABLE TRUST

**Other Producers:** None

**Tract Number:** 6815      **Description** White Oak Springs Sec 32 & 33 Lafayette Co

**FSA Physical Location :** Lafayette, WI      **ANSI Physical Location:** Lafayette, WI

**BIA Range Unit Number:**

**HEL Status:** HEL: conservation system is being actively applied

**Recon Number**

**Wetland Status:** Tract contains a wetland or farmed wetland

2018 - 234

**WL Violations:** None

| Farmland           | Cropland           | DCP Cropland           | WBP            | WRP/EWP | CRP Cropland | GRP |
|--------------------|--------------------|------------------------|----------------|---------|--------------|-----|
| 235.7              | 209.06             | 209.06                 | 0.0            | 0.0     | 0.0          | 0.0 |
| State Conservation | Other Conservation | Effective DCP Cropland | Double Cropped | MPL/FWP |              |     |
| 0.0                | 0.0                | 209.06                 | 0.0            | 0.0     |              |     |

| Crop                     | Base Acreage | PLC Yield | CCC-505 CRP Reduction |
|--------------------------|--------------|-----------|-----------------------|
| OATS                     | 2.06         | 56        | 0.0                   |
| CORN                     | 136.22       | 136       | 0.0                   |
| SOYBEANS                 | 28.89        | 44        | 0.0                   |
| <b>Total Base Acres:</b> | 167.17       |           |                       |

**Owners:** REBECCA R ANDERSON REVOCABLE TRUST

Illinois  
Jo Daviess

U.S. Department of Agriculture  
Farm Service Agency

**FARM: 8200**  
**Prepared:** 6/12/20 1:51 PM  
**Crop Year:** 2020  
**Page:** 9 of 10

Report ID: FSA-156EZ

**Abbreviated 156 Farm Record**

DISCLAIMER: This is data extracted from the web farm database. Because of potential messaging failures in MIDAS, this data is not guaranteed to be an accurate and complete representation of data contained in the MIDAS system, which is the system of record for Farm Records.

**Other Producers:** TURPIN BROS. FARMS LLC

**Tract Number:** 6816 **Description** Scales Mound Twp Sec 15

**FSA Physical Location :** Jo Daviess, IL **ANSI Physical Location:** Jo Daviess, IL

**BIA Range Unit Number:**

**HEL Status:** HEL: conservation system is being actively applied

**Recon Number**

**Wetland Status:** Tract contains a wetland or farmed wetland

2018 - 234

**WL Violations:** None

| Farmland           | Cropland           | DCP Cropland           | WBP            | WRP/EWP | CRP Cropland | GRP |
|--------------------|--------------------|------------------------|----------------|---------|--------------|-----|
| 26.93              | 24.67              | 24.67                  | 0.0            | 0.0     | 0.0          | 0.0 |
| State Conservation | Other Conservation | Effective DCP Cropland | Double Cropped | MPL/FWP | Native Sod   |     |
| 0.0                | 0.0                | 24.67                  | 0.0            | 0.0     | 0.0          |     |

| Crop                     | Base Acreage | PLC Yield | CCC-505 CRP Reduction |
|--------------------------|--------------|-----------|-----------------------|
| OATS                     | 0.24         | 56        | 0.0                   |
| CORN                     | 16.08        | 136       | 0.0                   |
| SOYBEANS                 | 3.41         | 44        | 0.0                   |
| <b>Total Base Acres:</b> | 19.73        |           |                       |

**Owners:** ANDERSON, CARL L

**Other Producers:** None

**Tract Number:** 6817 **Description** Scales Mound Twp Sec 35

**FSA Physical Location :** Jo Daviess, IL **ANSI Physical Location:** Jo Daviess, IL

**BIA Range Unit Number:**

**HEL Status:** HEL: conservation system is being actively applied

**Recon Number**

**Wetland Status:** Tract contains a wetland or farmed wetland

2018 - 235

**WL Violations:** None

| Farmland           | Cropland           | DCP Cropland           | WBP            | WRP/EWP | CRP Cropland | GRP |
|--------------------|--------------------|------------------------|----------------|---------|--------------|-----|
| 73.99              | 64.57              | 64.57                  | 0.0            | 0.0     | 0.0          | 0.0 |
| State Conservation | Other Conservation | Effective DCP Cropland | Double Cropped | MPL/FWP | Native Sod   |     |
| 0.0                | 0.0                | 64.57                  | 0.0            | 0.0     | 0.0          |     |

| Crop  | Base Acreage | PLC Yield | CCC-505 CRP Reduction |
|-------|--------------|-----------|-----------------------|
| WHEAT | 1.13         | 47        | 0.0                   |
| OATS  | 2.91         | 63        | 0.0                   |

Illinois  
Jo Daviess

U.S. Department of Agriculture  
Farm Service Agency

**FARM: 8200**  
**Prepared:** 6/12/20 1:51 PM  
**Crop Year:** 2020  
**Page:** 10 of 10

Report ID: FSA-156EZ

**Abbreviated 156 Farm Record**

DISCLAIMER: This is data extracted from the web farm database. Because of potential messaging failures in MIDAS, this data is not guaranteed to be an accurate and complete representation of data contained in the MIDAS system, which is the system of record for Farm Records.

| Crop                     | Base Acreage | PLC Yield | CCC-505 CRP Reduction |
|--------------------------|--------------|-----------|-----------------------|
| CORN                     | 53.5         | 136       | 0.0                   |
| SOYBEANS                 | 3.01         | 44        | 0.0                   |
| <b>Total Base Acres:</b> | 60.55        |           |                       |

**Owners:** ANDERSON, NEIL T  
**Other Producers:** None

**Tract Number:** 6818      **Description** Scales Mound Twp Sec 35

**FSA Physical Location :** Jo Daviess, IL      **ANSI Physical Location:** Jo Daviess, IL

**BIA Range Unit Number:**

**HEL Status:** HEL: conservation system is being actively applied

**Recon Number**  
2018 - 235

**Wetland Status:** Tract contains a wetland or farmed wetland

**WL Violations:** None

| Farmland           | Cropland           | DCP Cropland           | WBP            | WRP/EWP | CRP Cropland | GRP |
|--------------------|--------------------|------------------------|----------------|---------|--------------|-----|
| 5.02               | 4.1                | 4.1                    | 0.0            | 0.0     | 0.0          | 0.0 |
| State Conservation | Other Conservation | Effective DCP Cropland | Double Cropped | MPL/FWP | Native Sod   |     |
| 0.0                | 0.0                | 4.1                    | 0.0            | 0.0     | 0.0          |     |

| Crop                     | Base Acreage | PLC Yield | CCC-505 CRP Reduction |
|--------------------------|--------------|-----------|-----------------------|
| WHEAT                    | 0.07         | 47        | 0.0                   |
| OATS                     | 0.19         | 63        | 0.0                   |
| CORN                     | 3.4          | 136       | 0.0                   |
| SOYBEANS                 | 0.19         | 44        | 0.0                   |
| <b>Total Base Acres:</b> | 3.85         |           |                       |

**Owners:** GEORGE AND CAROL ANDERSON IRREVOCABLE TRUST  
**Other Producers:** None

Illinois  
Jo Daviess

U.S. Department of Agriculture  
Farm Service Agency

**FARM: 7477**  
**Prepared:** 6/17/20 3:20 PM  
**Crop Year:** 2020  
**Page:** 1 of 2

Report ID: FSA-156EZ

### Abbreviated 156 Farm Record

DISCLAIMER: This is data extracted from the web farm database. Because of potential messaging failures in MIDAS, this data is not guaranteed to be an accurate and complete representation of data contained in the MIDAS system, which is the system of record for Farm Records.

| Operator Name       | Farm Identifier | Recon Number |
|---------------------|-----------------|--------------|
| ANDERSON ACRES, LLC |                 | 2014 - 34    |

Farms Associated with Operator: FSA Redacted

ARC/PLC G//F Eligibility: Eligible

CRP Contract Number(s): None

| Farmland           | Cropland           | DCP Cropland           | WBP            | WRP/EWP | CRP Cropland | GRP | Farm Status | Number of Tracts |
|--------------------|--------------------|------------------------|----------------|---------|--------------|-----|-------------|------------------|
| 39.7               | 38.2               | 38.2                   | 0.0            | 0.0     | 0.0          | 0.0 | Active      | 1                |
| State Conservation | Other Conservation | Effective DCP Cropland | Double Cropped | MPL/FWP | Native Sod   |     |             |                  |
| 0.0                | 0.0                | 38.2                   | 0.0            | 0.0     | 0.0          |     |             |                  |

| ARC/PLC |        |        |             |                |                |
|---------|--------|--------|-------------|----------------|----------------|
| PLC     | ARC-CO | ARC-IC | PLC-Default | ARC-CO-Default | ARC-IC-Default |
| CORN    | OATS   | NONE   | NONE        | NONE           | NONE           |

| Crop                     | Base Acreage | PLC Yield | CCC-505 CRP Reduction |
|--------------------------|--------------|-----------|-----------------------|
| OATS                     | 1.9          | 58        | 0.0                   |
| CORN                     | 4.9          | 140       | 0.0                   |
| <b>Total Base Acres:</b> | 6.8          |           |                       |

Tract Number: 6211      **Description**

**FSA Physical Location :** Jo Daviess, IL      **ANSI Physical Location:** Jo Daviess, IL

**BIA Range Unit Number:**

**HEL Status:** HEL: conservation system is being actively applied

**Wetland Status:** Wetland determinations not complete

**WL Violations:** None

| Farmland           | Cropland           | DCP Cropland           | WBP            | WRP/EWP | CRP Cropland | GRP |
|--------------------|--------------------|------------------------|----------------|---------|--------------|-----|
| 39.7               | 38.2               | 38.2                   | 0.0            | 0.0     | 0.0          | 0.0 |
| State Conservation | Other Conservation | Effective DCP Cropland | Double Cropped | MPL/FWP | Native Sod   |     |
| 0.0                | 0.0                | 38.2                   | 0.0            | 0.0     | 0.0          |     |

| Crop                     | Base Acreage | PLC Yield | CCC-505 CRP Reduction |
|--------------------------|--------------|-----------|-----------------------|
| OATS                     | 1.9          | 58        | 0.0                   |
| CORN                     | 4.9          | 140       | 0.0                   |
| <b>Total Base Acres:</b> | 6.8          |           |                       |

Owners: ANDERSON, CARL L

NEIL T ANDERSON ESTATE

Illinois

U.S. Department of Agriculture

**FARM: 7477**

Jo Daviess

Farm Service Agency

**Prepared:** 6/17/20 3:20 PM

Report ID: FSA-156EZ

**Abbreviated 156 Farm Record**

**Crop Year:** 2020

**Page:** 2 of 2

**DISCLAIMER:** This is data extracted from the web farm database. Because of potential messaging failures in MIDAS, this data is not guaranteed to be an accurate and complete representation of data contained in the MIDAS system, which is the system of record for Farm Records.

---

**Other Producers:** None

---



United States  
Department of  
Agriculture

## Jo Daviess County, Illinois

### Tract 6211

### Farm 7477

2020 Program Year

| CLU | Acres | HEL  | Crop |
|-----|-------|------|------|
| 3   | 31.36 | HEL  |      |
| 7   | 0.92  | HEL  |      |
| 9   | 3.68  | HEL  |      |
| 10  | 2.24  | HEL  |      |
| 16  | 1.5   | UHEL | NC   |

Page Cropland Total: 38.2 acres



Map Created April 24, 2020

#### Common Land Unit

- Cropland
- Non-Cropland
- Tract Boundary

USDA FSA maps are for FSA Program administration only. This map does not represent a legal survey or reflect actual ownership; rather it depicts the information provided directly from the producer and/or the NAIP imagery. The producer accepts the data 'as is' and assumes all risks associated with its use. The USDA Farm Service Agency assumes no responsibility for actual or consequential damage incurred as a result of any user's reliance on this data outside FSA Programs. Wetland identifiers do not represent the size, shape, or specific determination of the area. Refer to your original determination (CPA-026 and attached maps) for exact boundaries and determinations or contact NRCS.








| CLU | Acres | HEL  | Crop |
|-----|-------|------|------|
| 1   | 18.07 | HEL  |      |
| 2   | 7.62  | HEL  |      |
| 3   | 5.48  | HEL  |      |
| 4   | 30.26 | HEL  |      |
| 7   | 1.59  | UHEL | NC   |
| 13  | 50.8  | UHEL | NC   |
| 14  | 2.46  | UHEL | NC   |

Page Cropland Total: 61.43 acres




Map Created April 22, 2020

street100k\_1\_11\_utm

**Common Land Unit**

-  Cropland
-  Non-Cropland
-  Tract Boundary

**Wetland Determination Identifiers**

-  Restricted Use
-  Limited Restrictions
-  Exempt from Conservation Compliance Provisions





United States  
Department of  
Agriculture

## Jo Daviess County, Illinois

### Tract 6816

### Farm 8200

2020 Program Year

| CLU | Acres | HEL  | Crop |
|-----|-------|------|------|
| 5   | 18.32 | HEL  |      |
| 73  | 0.12  | HEL  |      |
| 77  | 0.12  | HEL  |      |
| 79  | 0.11  | HEL  |      |
| 81  | 0.65  | HEL  |      |
| 84  | 0.47  | HEL  |      |
| 86  | 0.79  | HEL  |      |
| 87  | 0.07  | HEL  |      |
| 88  | 2.53  | HEL  |      |
| 89  | 0.42  | HEL  |      |
| 148 | 0.1   | UHEL | NC   |
| 149 | 0.1   | HEL  |      |
| 150 | 0.08  | UHEL | NC   |
| 151 | 0.26  | HEL  |      |
| 152 | 0.12  | UHEL | NC   |
| 199 | 1.96  | UHEL | NC   |
| 200 | 0.09  | HEL  |      |
| 201 | 0.09  | HEL  |      |
| 202 | 0.53  | HEL  |      |




Page Cropland Total: 24.67 acres

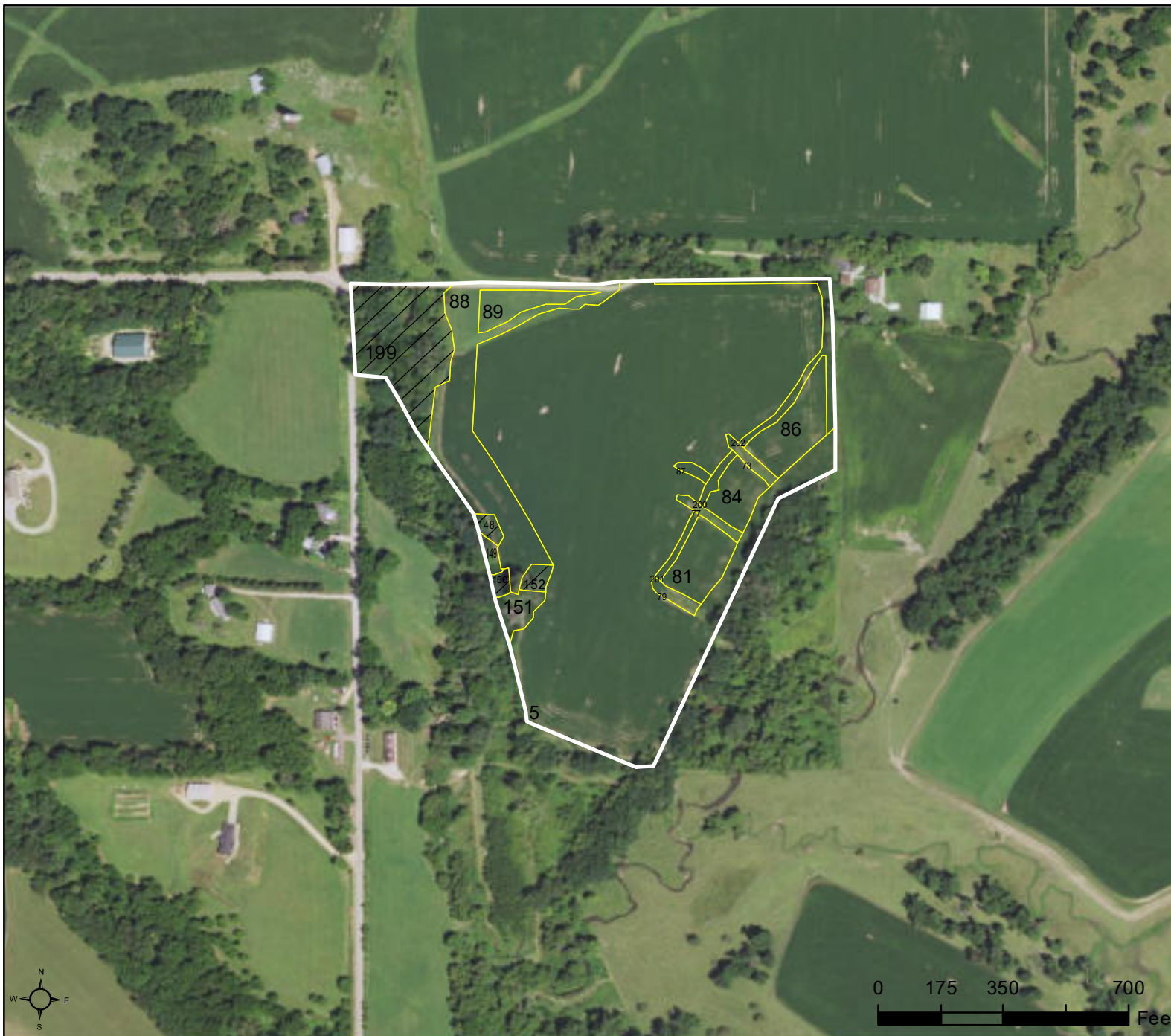
Map Created May 01, 2020

#### Common Land Unit

-  Cropland
-  Non-Cropland
-  Tract Boundary

#### Wetland Determination Identifiers

-  Restricted Use
-  Limited Restrictions
-  Exempt from Conservation Compliance Provisions



USDA FSA maps are for FSA Program administration only. This map does not represent a legal survey or reflect actual ownership; rather it depicts the information provided directly from the producer and/or the NAIP imagery. The producer accepts the data 'as is' and assumes all risks associated with its use. The USDA Farm Service Agency assumes no responsibility for actual or consequential damage incurred as a result of any user's reliance on this data outside FSA Programs. Wetland identifiers do not represent the size, shape, or specific determination of the area. Refer to your original determination (CPA-026 and attached maps) for exact boundaries and determinations or contact NRCS.