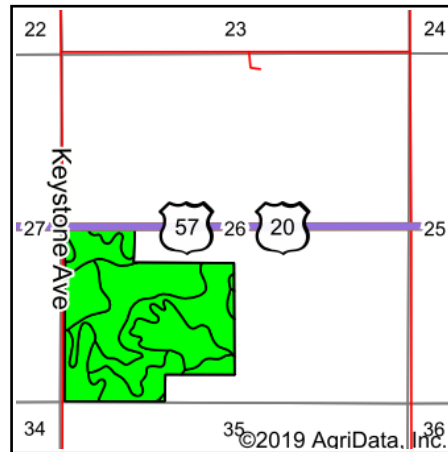
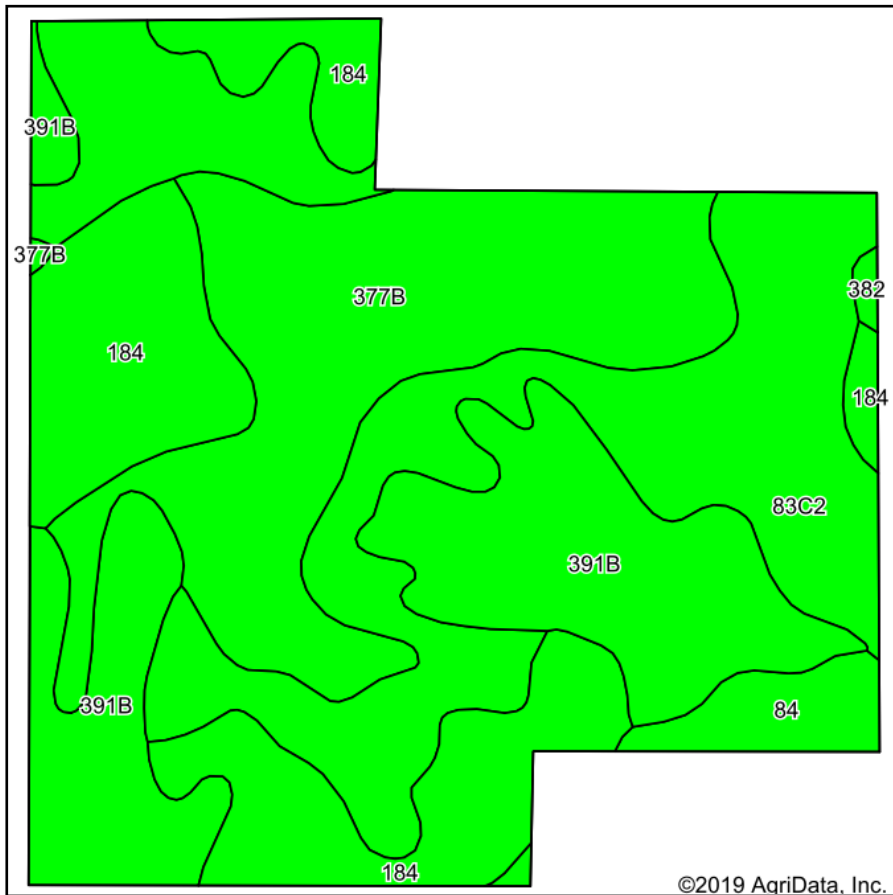


Soils Map



State: **Iowa**
 County: **Butler**
 Location: **26-90N-17W**
 Township: **Monroe**
 Acres: **126.45**
 Date: **1/29/2020**



Maps Provided By:

 CUSTOMIZED ONLINE MAPPING
 © AgriData, Inc. 2019 www.AgriDataInc.com



Soils data provided by USDA and NRCS.

Area Symbol: IA023. Soil Area Version: 25

Code	Soil Description	Acres	Percent of field	CSR2 Legend	Non-Irr Class *c	CSR2**	CS R	Alfalfa hay	Bromegrass alfalfa	Bromegrass alfalfa hay	Canarygrass hay	Corn	Corn silage	Kentucky bluegrass	Oats	Smooth bromegrass
83C2	Kenyon loam, 5 to 9 percent slopes, eroded	38.58	30.5%		Ille	84	68		10.6	6.3		212		3.7	88	6.2
377B	Dinsdale silty clay loam, 2 to 5 percent slopes	30.61	24.2%		Ile	94	90									
391B	Clyde-Floyd complex, 1 to 4 percent slopes	27.18	21.5%		Ilw	87	72									
184	Klinger silty clay loam, 1 to 4 percent slopes	25.95	20.5%		Iw	95	95									
84	Clyde silty clay loam, 0 to 3 percent slopes	3.79	3.0%		Ilw	88	75	4.4	7	4.2	3	193.5	18	3.3	76.5	6.3
382	Maxfield silty clay loam, 0 to 2 percent slopes	0.34	0.3%		Ilw	87	90									
Weighted Average						89.5	80	0.1	3.4	2	0.1	70.5	0.5	1.2	29.1	2.1

**IA has updated the CSR values for each county to CSR2.
 *c: Using Capabilities Class Dominant Condition Aggregation Method
 Soils data provided by USDA and NRCS.