

Certified Wetland Determination

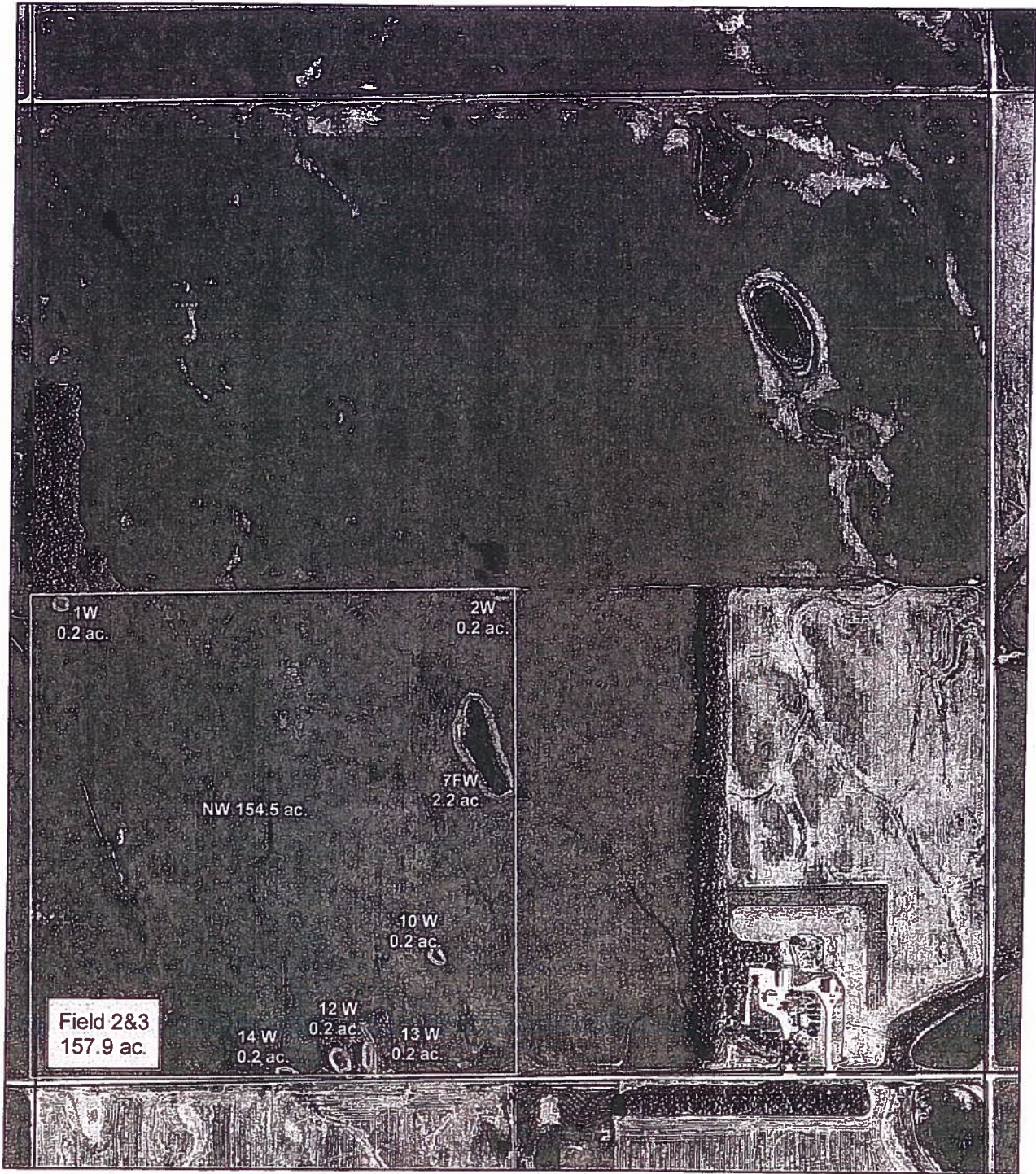
Field Office: Valley City

Agency: USDA- NRCS

Date: May 20, 2013

Legal Desc: 28-137-56

Tract: 3122



Legend	
CWD Boundary	
Wetlands	
Drains	

W	Wetland
FW	Farmed Wetland Drained or modified & cropped prior to 12-23-1985, but still meets wetland criteria
PC	Prior Converted
NW	Non Wetland

See NRCS CPA 026E for definitions and additional information.





HIGHLY ERODIBLE LAND AND WETLAND CONSERVATION DETERMINATION

Name: Jerry Daub, Address: 3332 20th St. S, Fargo, ND 58104, Request Date: 6/11/11, County: Barnes, Agency or Person Requesting Determination: Farm Service Agency, Tract No: 3122, FSA Farm No.: 6674

Section I - Highly Erodible Land

Is a soil survey now available for making a highly erodible land determination? Are there highly erodible soil map units on this farm?

Fields in this section have undergone a determination of whether they are highly erodible land (HEL) or not; fields for which an HEL Determination has not been completed are not listed. In order to be eligible for USDA benefits, a person must be using an approved conservation system on all HEL.

Table with 5 columns: Field(s), HEL(Y/N), Sodbust(Y/N), Acres, Determination Date

The Highly Erodible Land determination was completed in the

Section II - Wetlands

Are there hydric soils on this farm? Y

Fields in this section have had wetland determinations completed. See the Definition of Wetland Label Codes for additional information regarding allowable activities under the wetland conservation provisions of the Food Security Act and/or when wetland determinations are necessary to determine USDA program eligibility.

Table with 6 columns: Field(s), Wetland Label*, Occurrence Year (CW)**, Acres, Determination Date, Certification Date

The wetland determination was completed in the field. It was mailed to the person on 5/20/2013.

Remarks:

I certify that the above determinations are correct and were conducted in accordance with policies and procedures contained in the National Food Security Act Manual.

Signature Designated Conservationist: [Signature], Date: 5/20/13