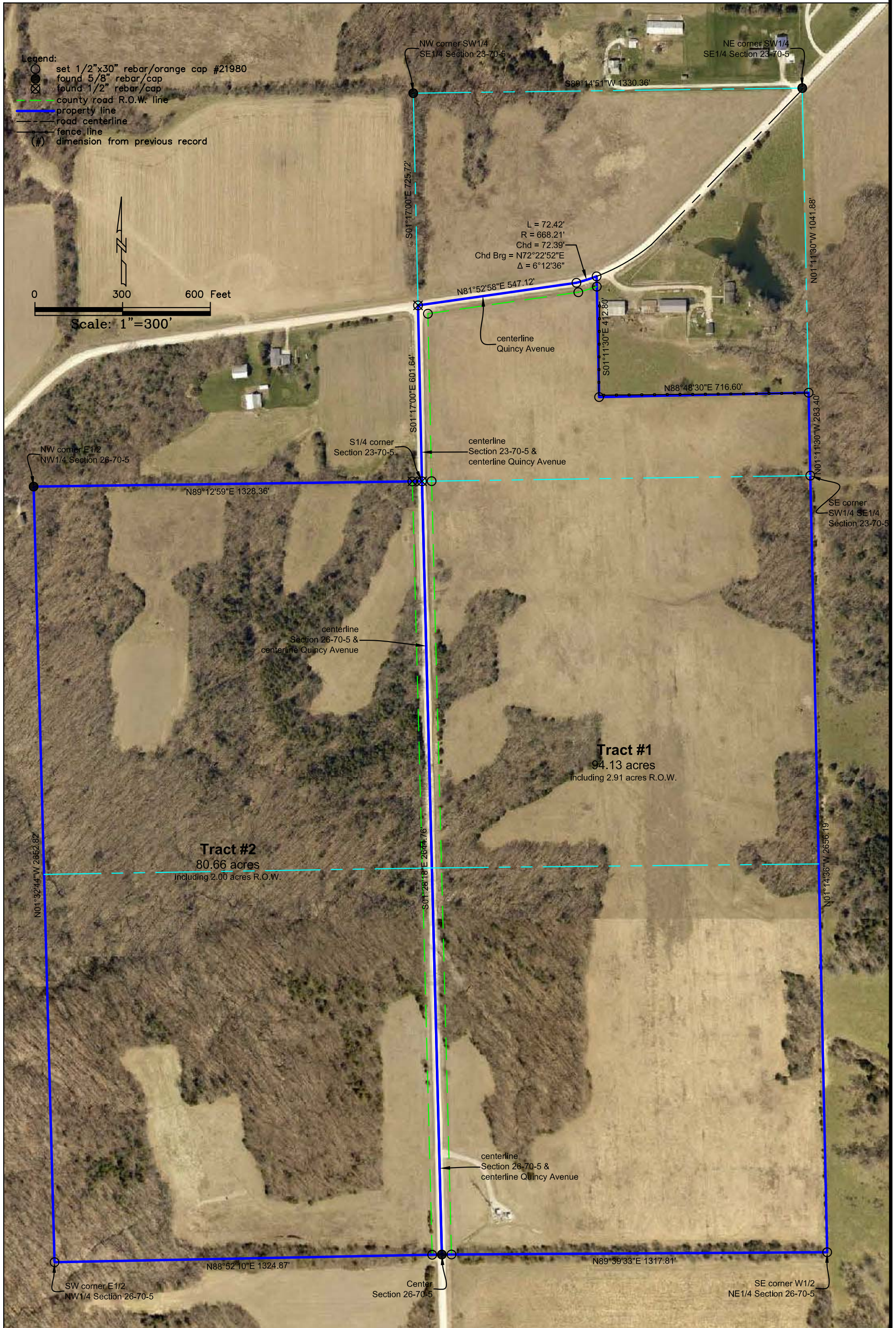
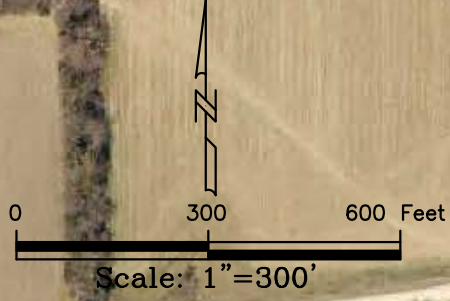


Legend:

- set 1/2"x30" rebar/orange cap #21980
- found 5/8" rebar/cap
- ⊗ found 1/2" rebar/cap
- - - county road R.O.W. line
- property line
- - - road centerline
- - - fence line
- (#) dimension from previous record



**Tract #1**  
94.13 acres  
Including 2.91 acres R.O.W.

**Tract #2**  
80.66 acres  
Including 2.00 acres R.O.W.

NW corner SW1/4  
SE1/4 Section 23-70-5

NE corner SW1/4  
SE1/4 Section 23-70-5

NW corner E1/2  
NW1/4 Section 26-70-5

S1/4 corner  
Section 23-70-5

centerline  
Section 23-70-5 &  
centerline Quincy Avenue

centerline  
Section 26-70-5 &  
centerline Quincy Avenue

centerline  
Section 26-70-5 &  
centerline Quincy Avenue

Center  
Section 26-70-5

SE corner W1/2  
NE1/4 Section 26-70-5

L = 72.42'  
R = 668.21'  
Chd = 72.39'  
Chd Brg = N72°22'52"E  
Δ = 6°12'36"

S89°14'51"W 1330.36'

S01°17'00"E 725.72'

S01°17'00"E 601.64'

S01°28'18"E 2664.76'

N01°32'44"W 2652.82'

N89°12'59"E 1328.36'

N81°52'58"E 547.12'

S01°11'30"E 412.80'

N88°48'30"E 716.60'

N01°11'30"W 1041.88'

N01°11'30"W 283.40'

N01°14'36"W 2656.19'

N89°12'59"E 1328.36'

N88°52'10"E 1324.87'

N89°39'33"E 1317.81'

SW corner E1/2  
NW1/4 Section 26-70-5