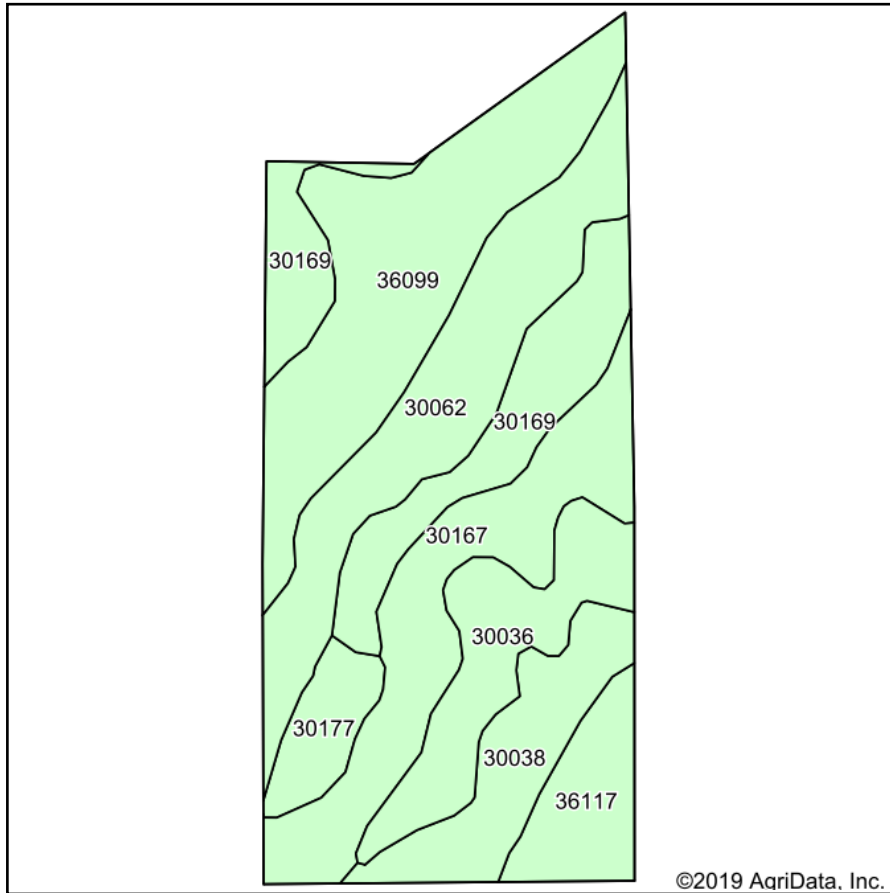
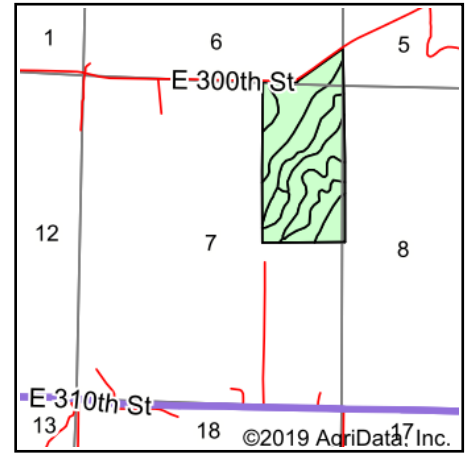


Soils Map



Soils data provided by USDA and NRCS.



State: **Missouri**
 County: **Harrison**
 Location: **7-63N-27W**
 Township: **Sherman**
 Acres: **84.1**
 Date: **3/12/2019**



Maps Provided By:

 CUSTOMIZED ONLINE MAPPING
 © AgriData, Inc. 2019 www.AgriDataInc.com



Area Symbol: MO081, Soil Area Version: 21

| Code | Soil Description | Acres | Percent of field | Non-Irr Class *c | Alfalfa hay | *n NCCPI Soybeans |
|-------------------------|--|-------|------------------|------------------|-------------|-------------------|
| 36099 | Zook-Colo silty clay loams, 1 to 3 percent slopes, frequently flooded | 18.81 | 22.4% | IIIw | | 58 |
| 30062 | Gara loam, 9 to 14 percent slopes | 14.74 | 17.5% | IVe | | 60 |
| 30167 | Pershing silt loam, 2 to 5 percent slopes | 13.53 | 16.1% | IIIe | | 62 |
| 30169 | Pershing silt loam, 5 to 9 percent slopes | 11.95 | 14.2% | IIIe | | 61 |
| 30036 | Armstrong loam, 5 to 9 percent slopes | 8.89 | 10.6% | IIIe | 5 | 52 |
| 30038 | Armstrong loam, 9 to 14 percent slopes | 7.55 | 9.0% | IVe | | 52 |
| 36117 | Nodaway silt loam, heavy till, 0 to 2 percent slopes, occasionally flooded | 5.21 | 6.2% | IIw | | 81 |
| 30177 | Pershing silty clay loam, 5 to 9 percent slopes, severely eroded | 3.42 | 4.1% | IVe | | 43 |
| Weighted Average | | | | | 0.5 | *n 59.1 |

*n: The aggregation method is "Weighted Average using major components"

*c: Using Capabilities Class Dominant Condition Aggregation Method

Soils data provided by USDA and NRCS.