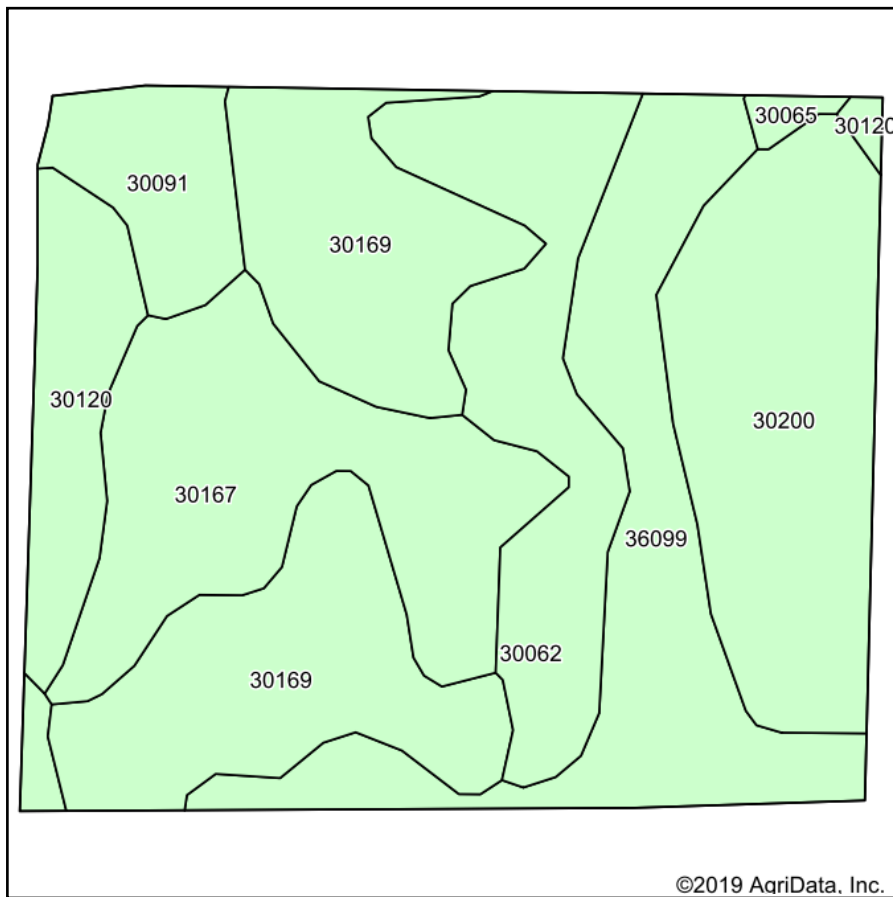
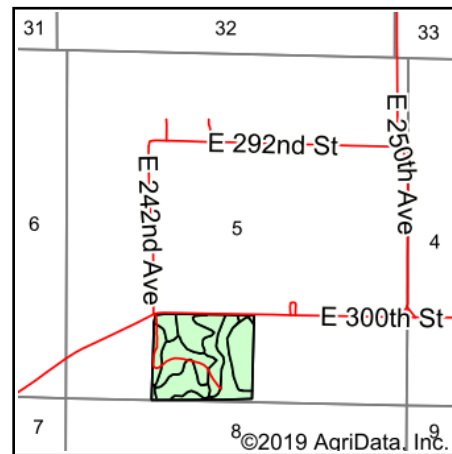


# Soils Map



Soils data provided by USDA and NRCS.



State: **Missouri**  
 County: **Harrison**  
 Location: **5-63N-27W**  
 Township: **Sherman**  
 Acres: **48**  
 Date: **3/12/2019**



Maps Provided By:  
  
 CUSTOMIZED ONLINE MAPPING  
 © AgriData, Inc. 2019 www.AgriDataInc.com



## Area Symbol: MO081, Soil Area Version: 21

Code	Soil Description	Acres	Percent of field	Non-Irr Class *c	Alfalfa hay	*n NCCPI Soybeans
30169	Pershing silt loam, 5 to 9 percent slopes	11.13	23.2%	IIIe		61
30200	Shelby loam, 9 to 14 percent slopes	8.35	17.4%	IIIe		63
36099	Zook-Colo silty clay loams, 1 to 3 percent slopes, frequently flooded	8.34	17.4%	IIIw		58
30167	Pershing silt loam, 2 to 5 percent slopes	8.04	16.8%	IIIe		62
30062	Gara loam, 9 to 14 percent slopes	6.26	13.0%	IVe		60
30120	Lagonda silty clay loam, 5 to 9 percent slopes, eroded	3.17	6.6%	IIIe	5	54
30091	Grundy silty clay loam, 2 to 5 percent slopes, moderately eroded	2.46	5.1%	Ile		67
30065	Gasconade flaggy silty clay loam, 14 to 35 percent slopes	0.25	0.5%	Vlls	1	2
Weighted Average					0.3	*n 60.4

\*n: The aggregation method is "Weighted Average using major components"

\*c: Using Capabilities Class Dominant Condition Aggregation Method

Soils data provided by USDA and NRCS.