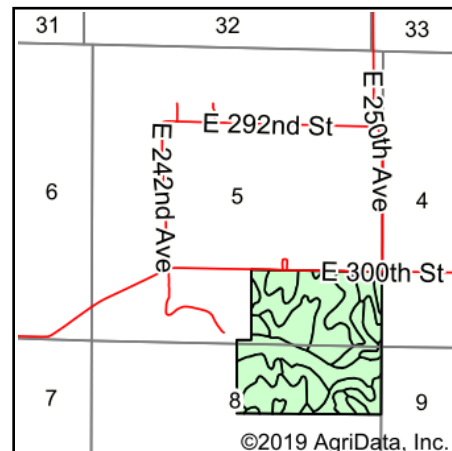
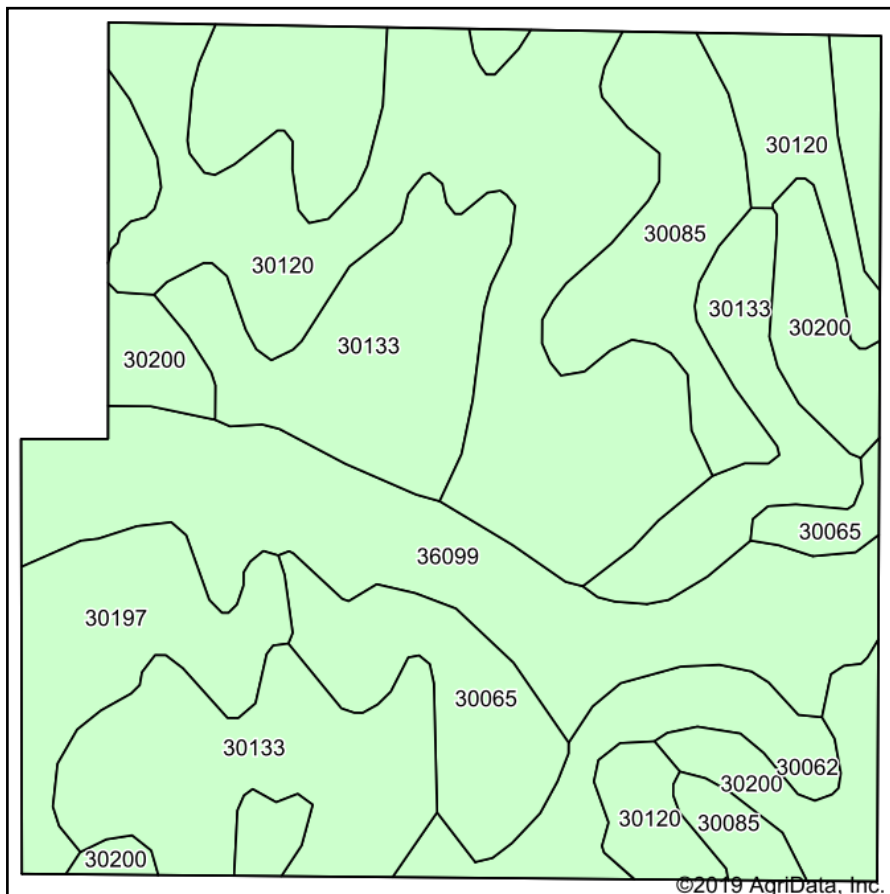


# Soils Map



State: **Missouri**  
 County: **Harrison**  
 Location: **5-63N-27W**  
 Township: **Sherman**  
 Acres: **153.1**  
 Date: **3/12/2019**



Maps Provided By:  
**surety**  
 CUSTOMIZED ONLINE MAPPING  
 © AgriData, Inc. 2019 www.AgriDataInc.com



## Area Symbol: MO081, Soil Area Version: 21

Code	Soil Description	Acres	Percent of field	Non-Irr Class *c	Alfalfa hay	*n NCCPI Soybeans
30120	Lagonda silty clay loam, 5 to 9 percent slopes, eroded	37.91	24.8%	IIIe	5	54
30133	Lamoni clay loam, 5 to 9 percent slopes, moderately eroded	32.87	21.5%	IIIe		50
36099	Zook-Colo silty clay loams, 1 to 3 percent slopes, frequently flooded	22.58	14.7%	IIIw		58
30085	Grundy silt loam, 2 to 5 percent slopes	21.16	13.8%	Ile		64
30200	Shelby loam, 9 to 14 percent slopes	12.56	8.2%	IIIe		63
30197	Shelby loam, 14 to 18 percent slopes	9.80	6.4%	IVe		58
30065	Gasconade flaggy silty clay loam, 14 to 35 percent slopes	9.64	6.3%	VIIIs	1	2
30062	Gara loam, 9 to 14 percent slopes	6.58	4.3%	IVe		60
<b>Weighted Average</b>					<b>1.3</b>	<b>*n 53.1</b>

\*n: The aggregation method is "Weighted Average using major components"

\*c: Using Capabilities Class Dominant Condition Aggregation Method

Soils data provided by USDA and NRCS.