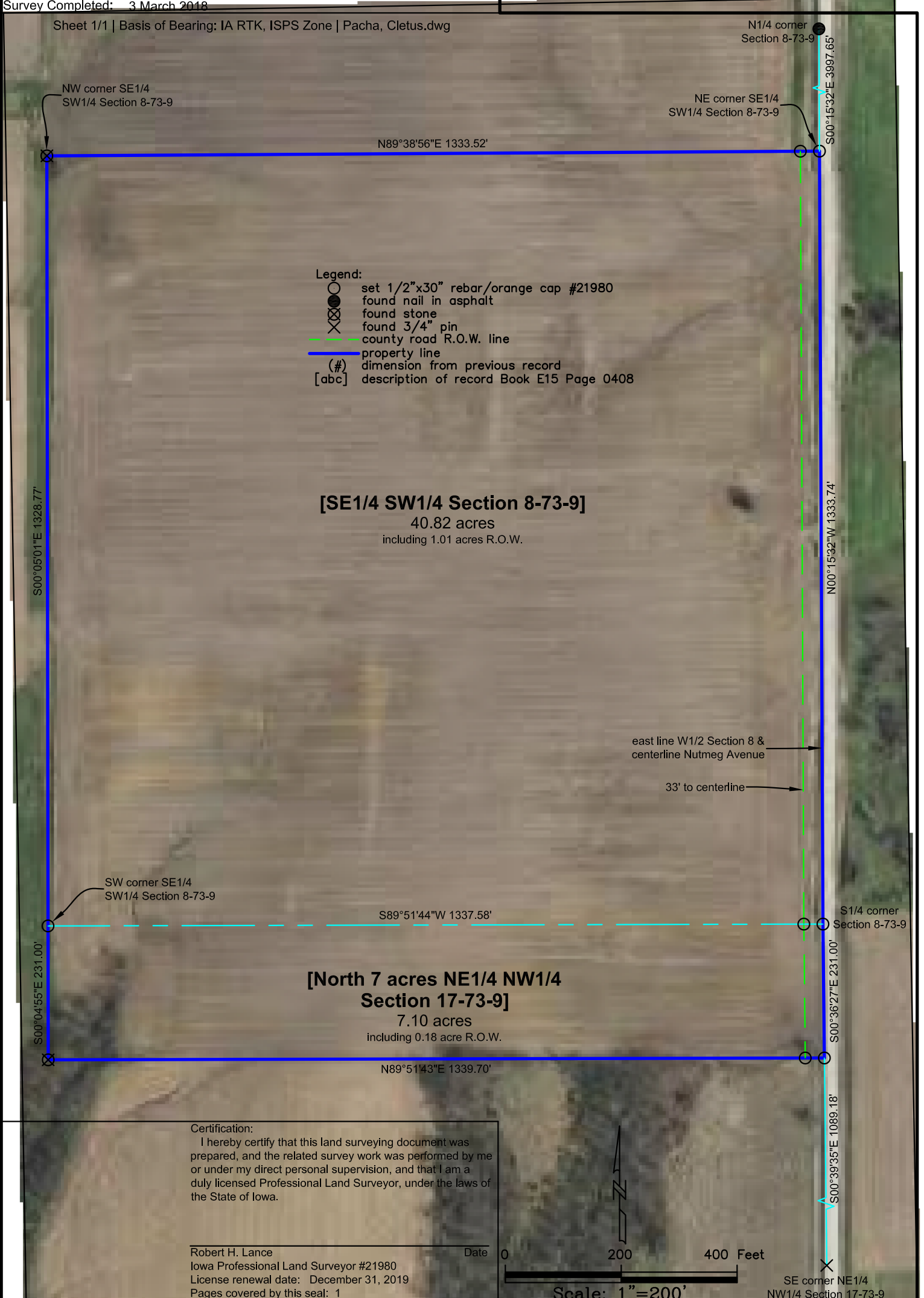


RETRACEMENT PLAT OF SURVEY

INDEX LEGEND

Property Location: SE1/4 SW1/4 Section 8 & part NE1/4 NW1/4 Section 17
 Township 73 North, Range 9 West, Jefferson County, Iowa
 Surveyor: Robert H. Lance, Iowa P.L.S. #21980, rob@lancesurveying.com
 Return Document to: Lance Surveying Services (319) 986-6779
 1505 North Broadway Street, Mt. Pleasant, IA 52641
 Survey Requested by: Lynn Richard
 Proprietor: Cletus Eugene Pacha Trust
 Survey Completed: 3 March 2018

Sheet 1/1 | Basis of Bearing: IA RTK, ISPS Zone | Pacha, Cletus.dwg



NW corner SE1/4
SW1/4 Section 8-73-9

NE corner SE1/4
SW1/4 Section 8-73-9

N1/4 corner
Section 8-73-9

N89°38'56"E 1333.52'

S00°15'32"E 3997.65'

S00°05'01"E 1328.77'

N00°15'32"W 1333.74'

east line W1/2 Section 8 &
centerline Nutmeg Avenue

33' to centerline

SW corner SE1/4
SW1/4 Section 8-73-9

S89°51'44"W 1337.58'

S1/4 corner
Section 8-73-9

S00°04'55"E 231.00'

S00°36'27"E 231.00'

**[North 7 acres NE1/4 NW1/4
Section 17-73-9]**

7.10 acres
including 0.18 acre R.O.W.

N89°51'43"E 1339.70'

S00°39'35"E 1089.18'

SE corner NE1/4
NW1/4 Section 17-73-9