

request for

due by Tuesday, March 7, 2017

PROPOSAL

2,330
± cropland
acres

Farm #1

Farm #1

Farm #2

Farm #2

Farm #3

Farm #4

Farm #4



**View Property
Location**

SteffesGroup.com
or scan the code!

Settingsgard Family

Ramsey County, ND | Farmland for Rent

Steffes Group, Inc., 2000 Main Avenue East, West Fargo, ND 58078
800.726.8609 | 701.237.9173 | SteffesGroup.com



REQUEST for Proposal Criteria

- **Cropland Acres: 2,330+/-**

RAMSEY COUNTY, ND – Newland & Lawton TWPs

LENGTH OF AGREEMENT: 2017, 2018, & 2019 Crop Years (3 years)

- Offered in four separate farms, together, or in any combination.
- Proposals must be received by 5:00PM on Tuesday, March 7, 2017.

CROPLAND PAYMENTS: Due upon signing rental agreement for the 2017 crop year and April 1st of 2018 and 2019.

TERMS & REQUIREMENTS:

- Proposal should be submitted based on a per FSA Cropland Acre basis.
- Final determination of actual FSA Cropland Acres will be determined at contract signing and may be adjusted as acres are identified.
- All proposals must be received by **5:00 P.M. Tuesday, March 7th, 2017.**
- Notification and award of the farm(s) will be given once evaluations have been completed on or before **5:00PM, Wednesday, March 15th, 2017.**
- Contract signing will take place at the Steffes Group office in West Fargo.
- **There will be no oral bidding/raise opportunity. Interested parties should submit their highest and best bid.**
- As terms of the lease, the Owner will require the Tenant to maintain farm liability insurance and the Owner's name to be listed on the Tenant's farm liability insurance policy.
- The Owner(s) reserves the right to accept or rejected any and all proposals.

CONSIDERATIONS:

- While price is a significant factor, it will not be the only criteria to award the final rental agreement.
- Stewardship of the land, excellent farming practices, quality equipment, capacity and resources will all be factors.

The Settingsgard family (Lee, Barbara, & Grant) is seeking proposals to enter into a Tenant/Landlord relationship for the following described farmland located in Newland & Lawton Townships of Ramsey County near Edmore/Lawton area.

Please Note: From 2011-2016, Lee Settingsgard applied variable rate starter fertilizer & nitrogen applications based on soil tests and advice from Dave Svobodny with Midwest Consulting of Park River. Application maps are available upon request or for download at SteffesGroup.com.

- Interested parties should present a comprehensive proposal in a professional manner that proves and demonstrates these abilities. The proposals might include timelines of farm histories, inventories of equipment available, projected crop rotations, letters of recommendations from other landlords/vendors or lenders.
- Demonstration or proof of financial stability/position will also be considered.
- All positive criteria will be evaluated so any pertinent data, pictures, history and qualifications will be helpful.
- Be professional, comprehensive and detailed in your packages.
- The proposals must be in the form of a written document. An oral presentation will not be considered.
- Each proposal submitted may include multiple entities. Creative options may be presented; however, it should be submitted as an "option" with any pertinent details for considerations, and separate from your primary proposal.

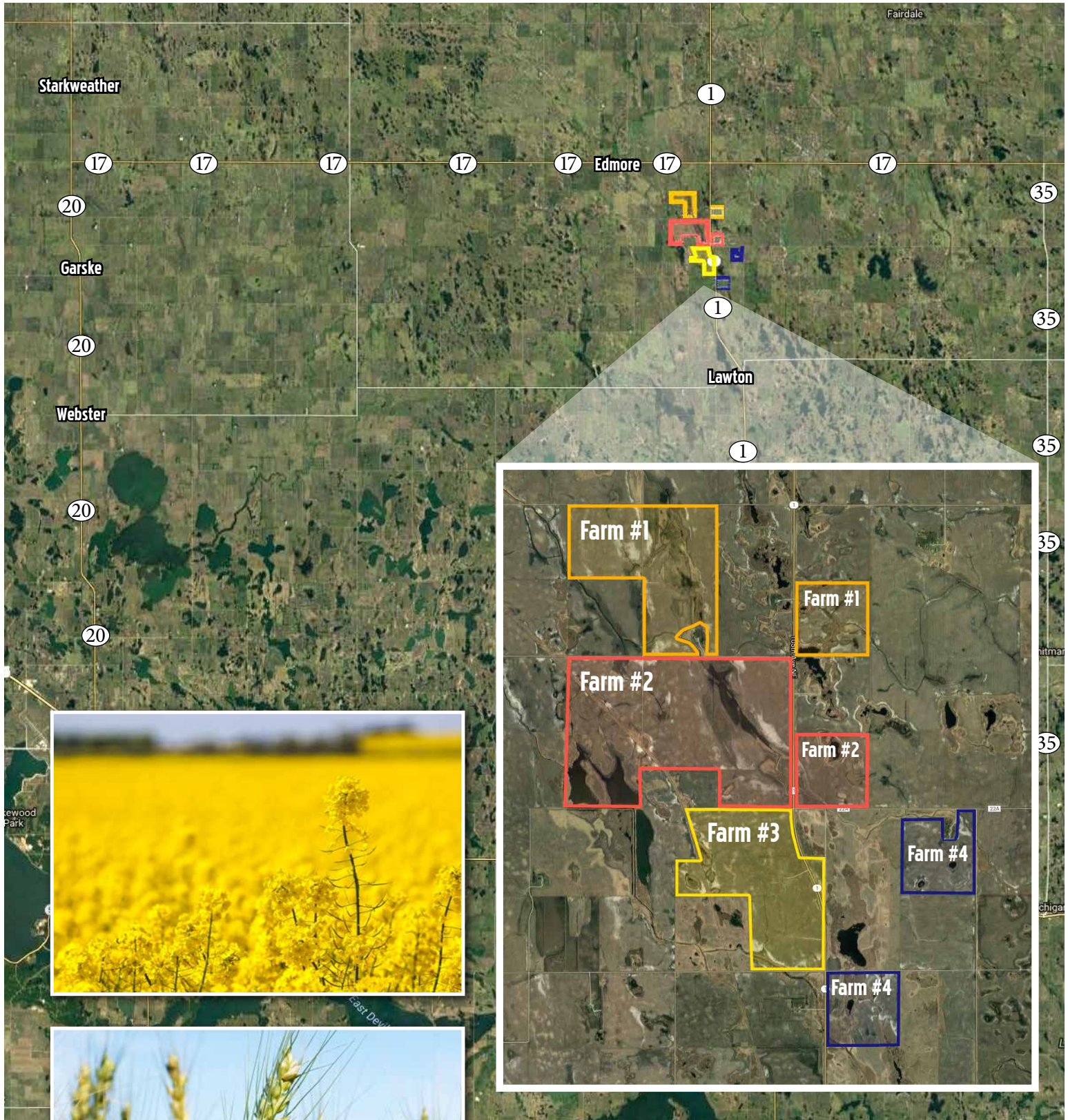
For details please contact Max Steffes at Steffes Group with questions 701.237.9173 or 701.212.2849.

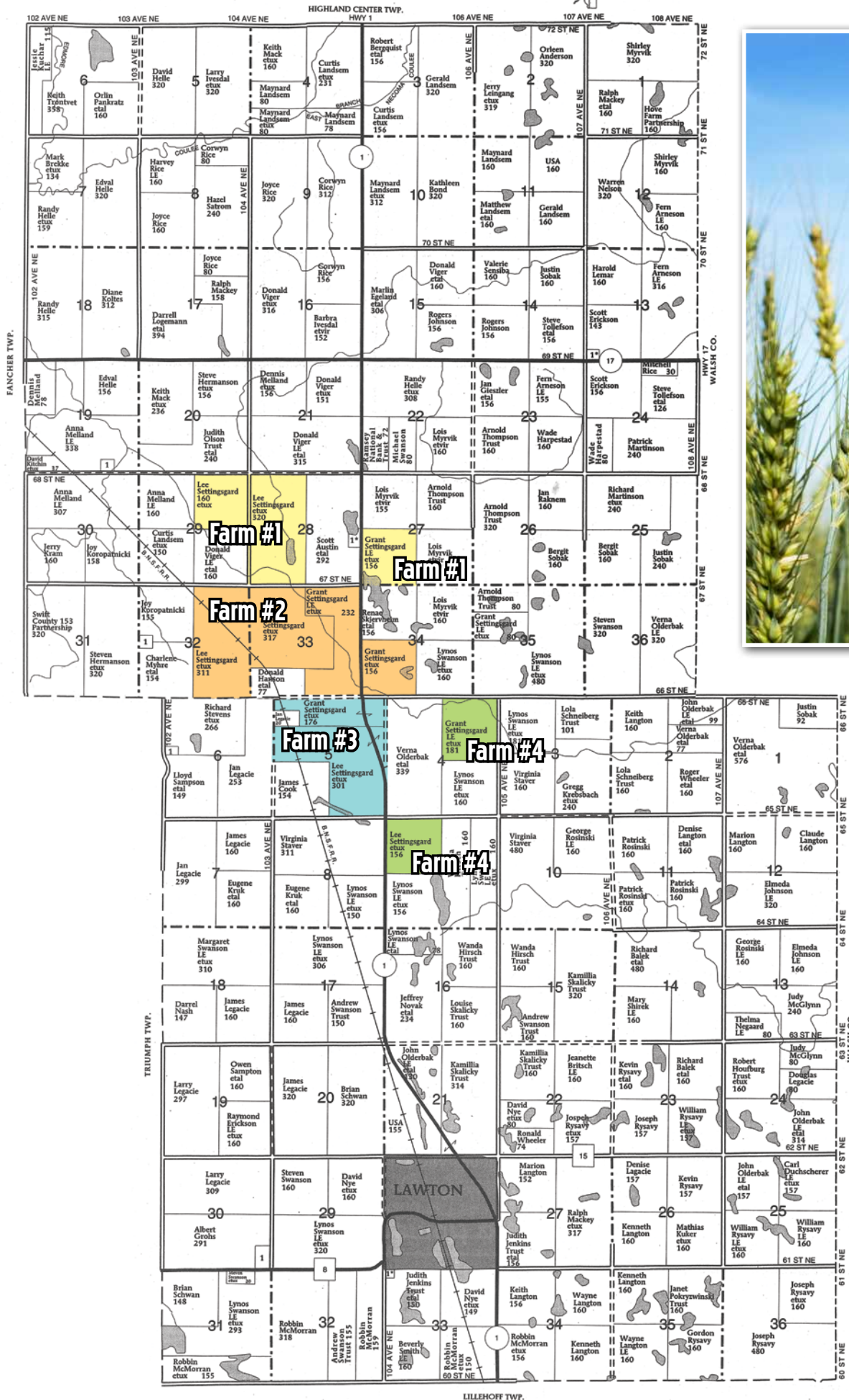
All proposals & bids must be received no later than 5:00 PM Tuesday, March 7, 2017.

**Mail to: Steffes Group, Inc.
2000 Main Avenue East
West Fargo, ND 58078**

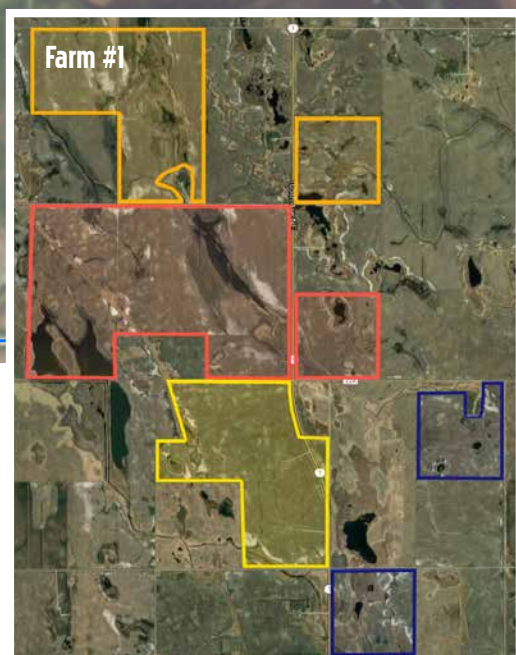
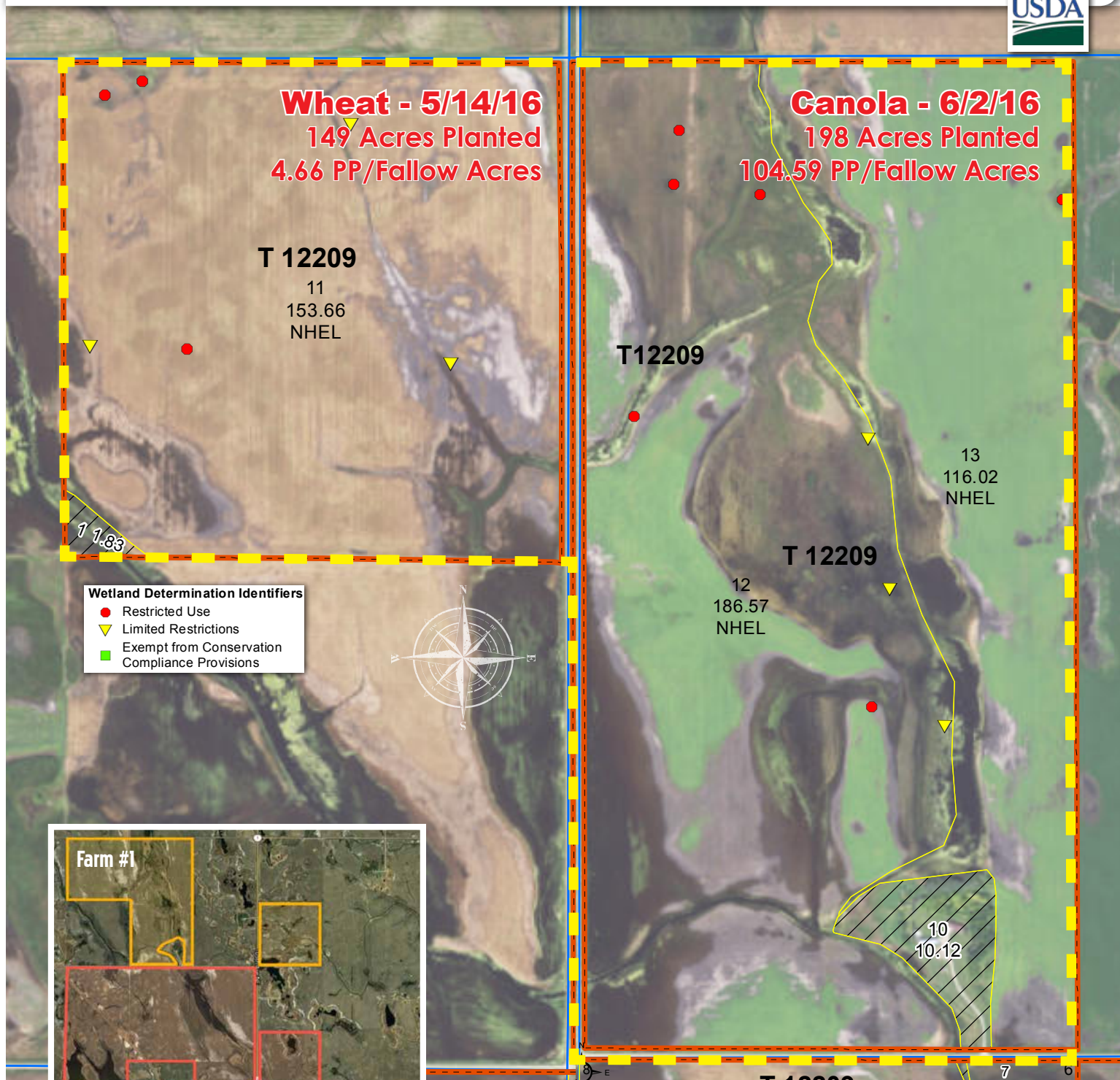
Email to: Max.Steffes@SteffesGroup.com

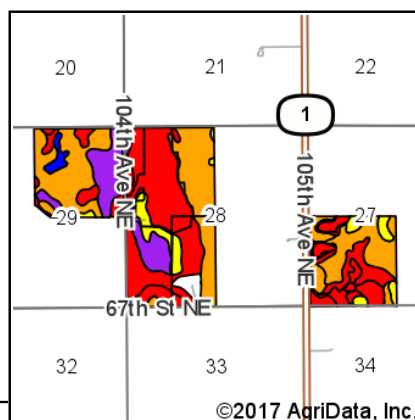
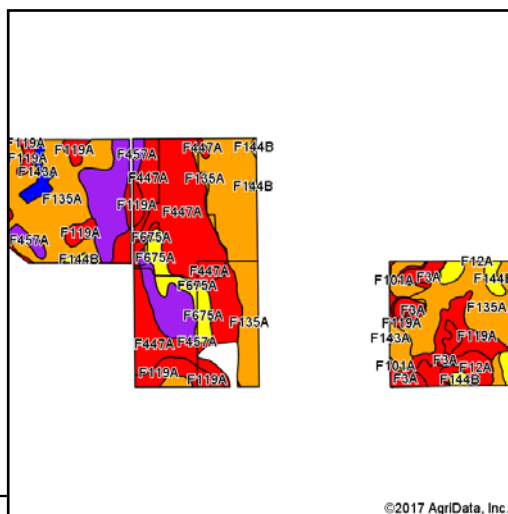
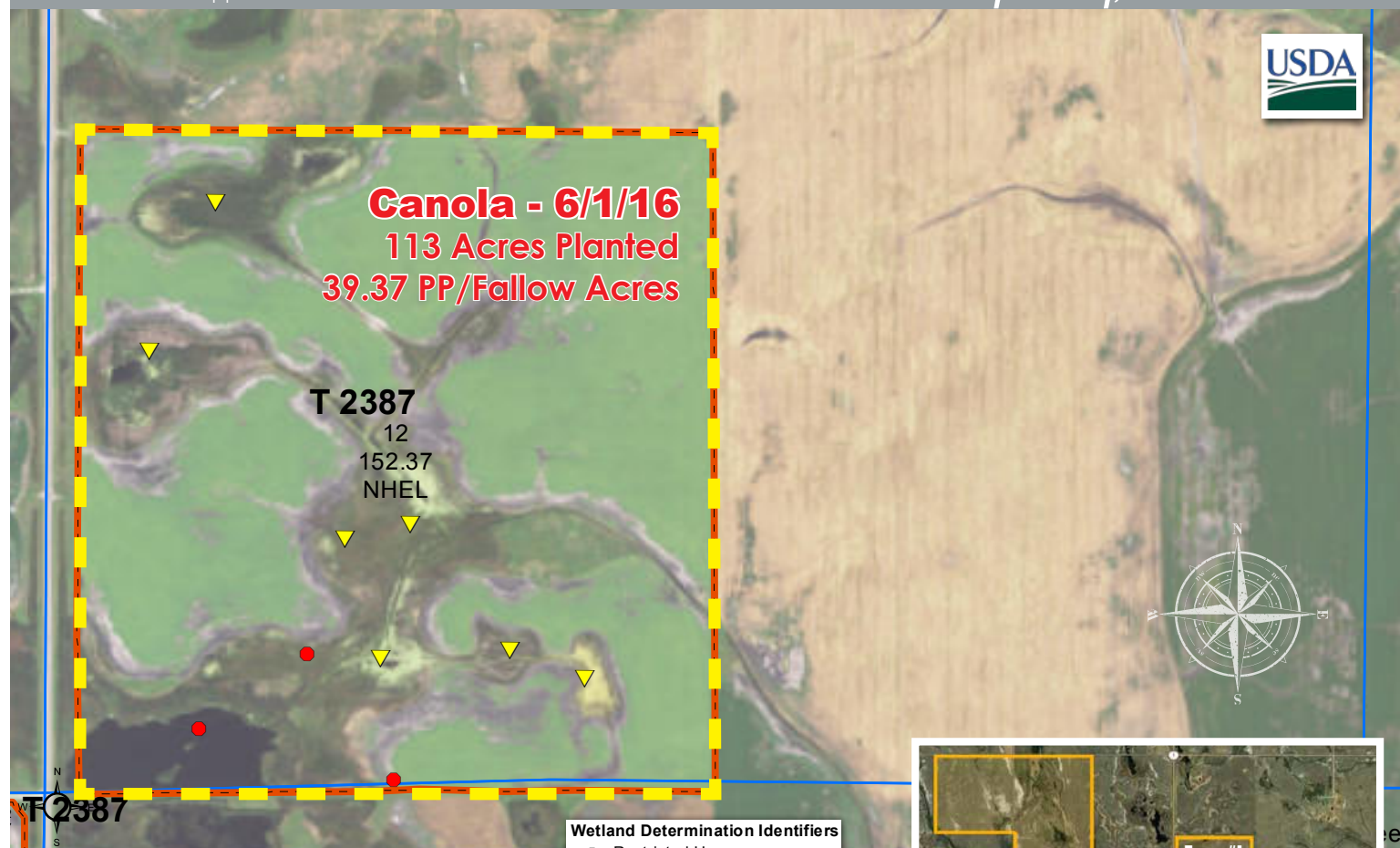






• Description: NE ¼ Section 29, W ½ less farmstead Section 28, & SW ¼ Section 27 • Cropland Acres: 608.62+/-



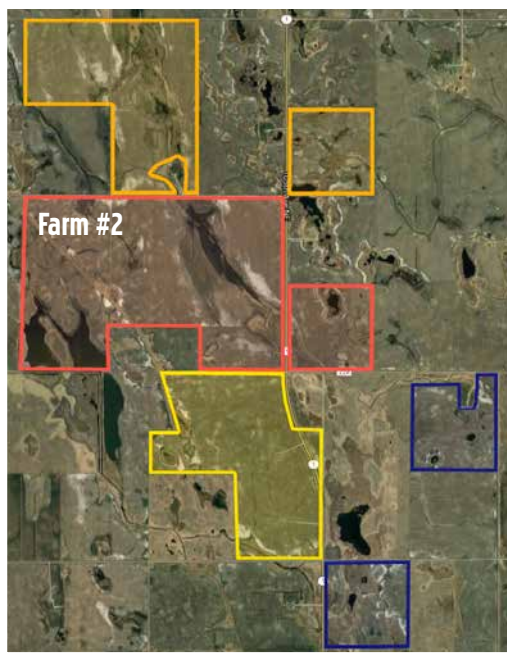
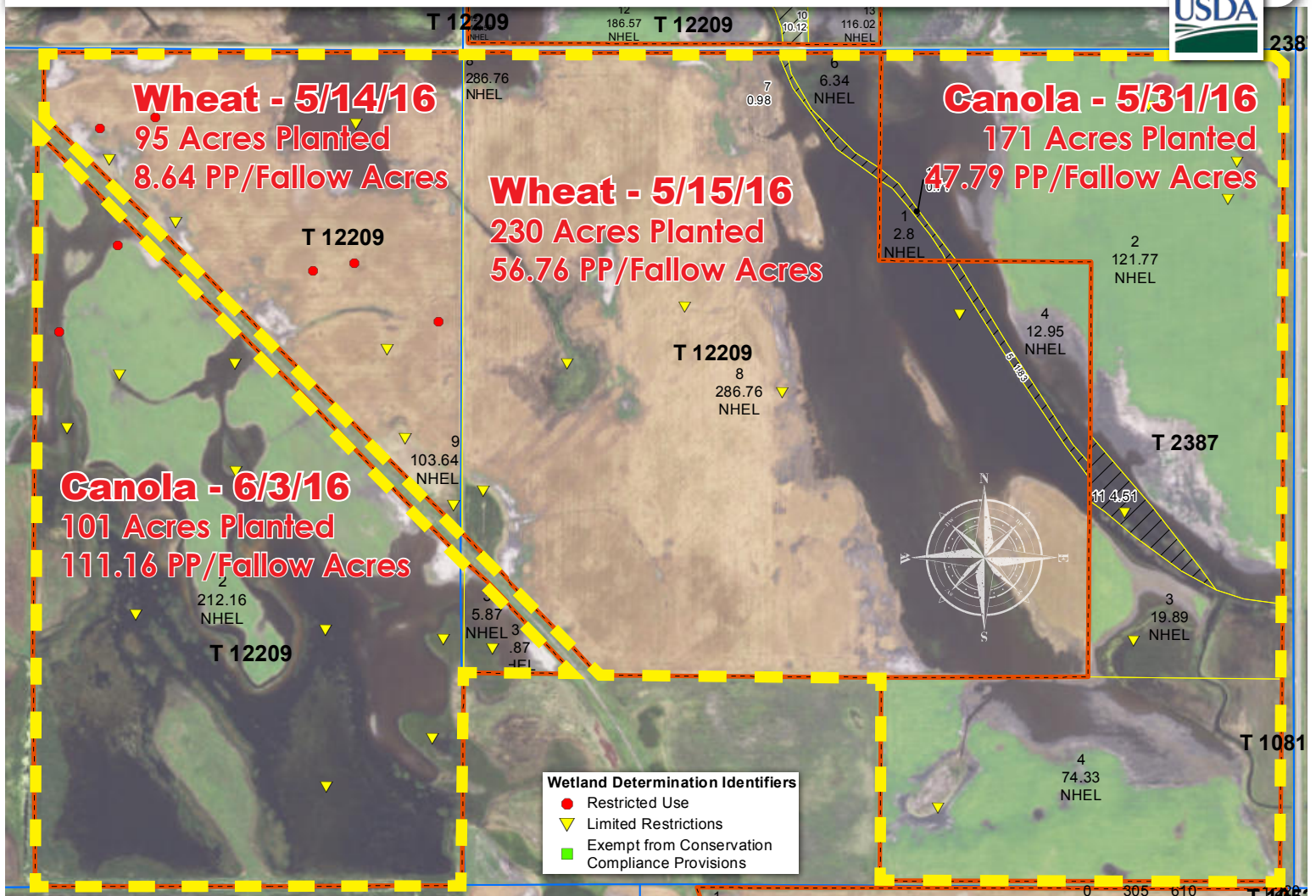


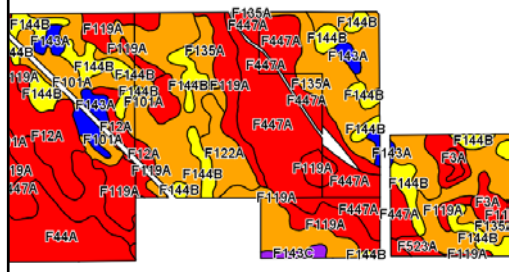
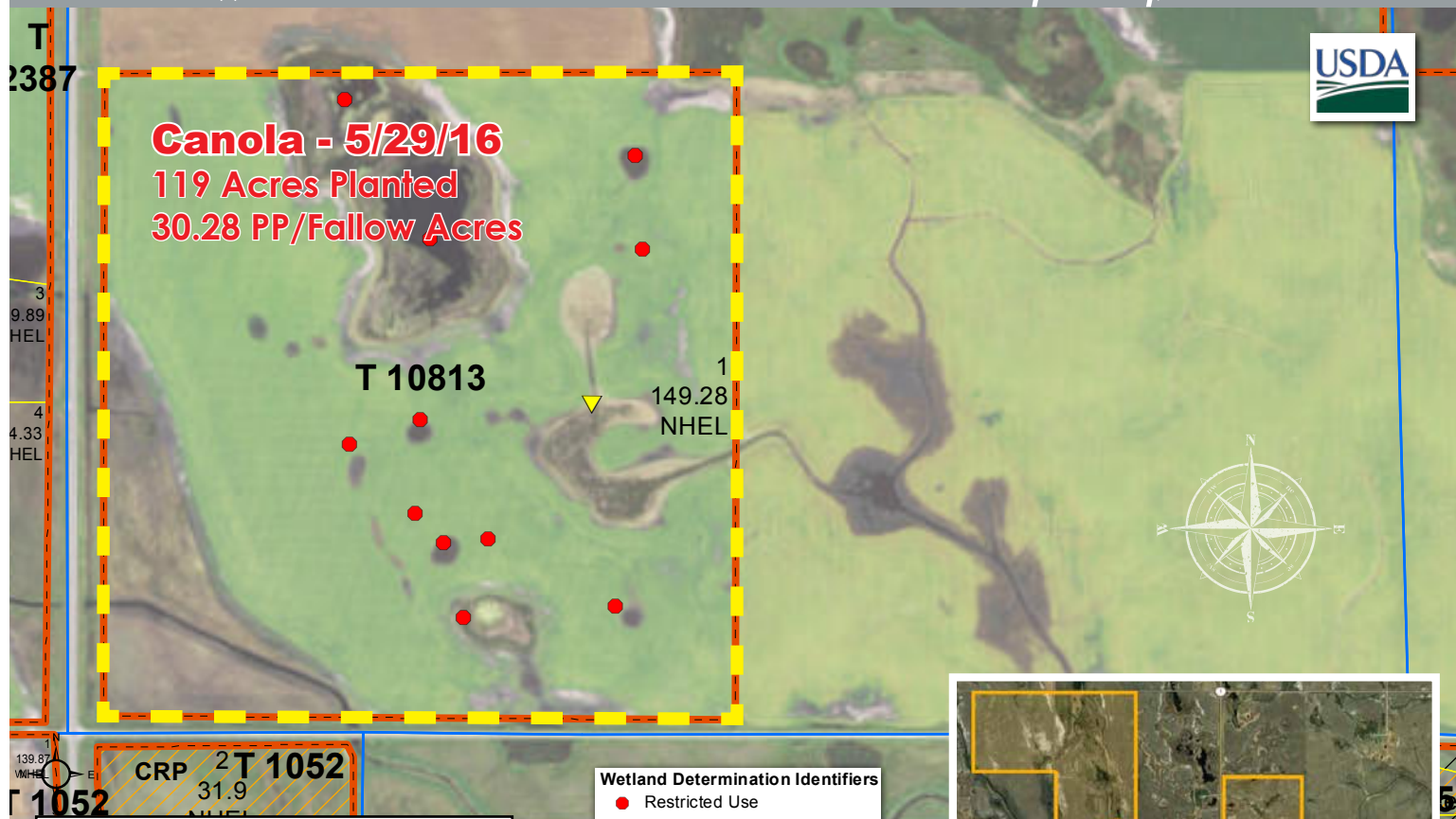
©2017 AgriData, Inc.

©2017 AgriData, Inc.

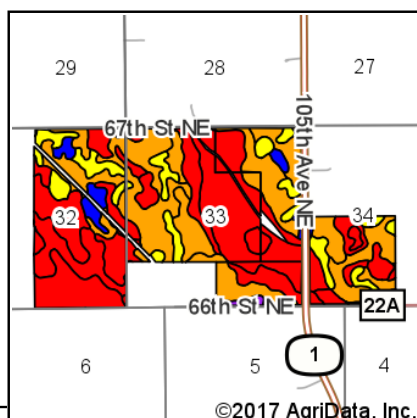
Code	Soil Description	Acres	Percent of field	PI Legend	Non-Irr Class *c	Productivity Index
F135A	Hamerly-Cresbard loams, 0 to 3 percent slopes	219.05	36.0%		Ile	75
F447A	Colvin-Borup complex, saline, 0 to 1 percent slopes	151.97	25.0%		IVw	37
F119A	Vallers-Hamerly loams, saline, 0 to 3 percent slopes	70.31	11.6%		IVw	45
F457A	Colvin-Aberdeen silty clay loams, 0 to 2 percent slopes	68.66	11.3%		IVs	53
F3A	Parnell silty clay loam, 0 to 1 percent slopes	23.54	3.9%		Vw	25
F675A	Hamerly-Warsing loams, 0 to 3 percent slopes	21.40	3.5%		IIIs	67
F101A	Hamerly-Wyard loams, 0 to 3 percent slopes	18.17	3.0%		Ile	77
F144B	Barnes-Buse loams, 3 to 6 percent slopes	17.92	2.9%		IIIle	69
F12A	Vallers, saline-Parnell complex, 0 to 1 percent slopes	9.89	1.6%		IVw	31
F143A	Barnes-Svea loams, 0 to 3 percent slopes	7.72	1.3%		IIc	85
Weighted Average						56.6

• **Description:** E ½ Section 32, Section 33 less S ½ SW ¼, & SW ¼ Section 34 • **Cropland Acres:** 995.79+/-

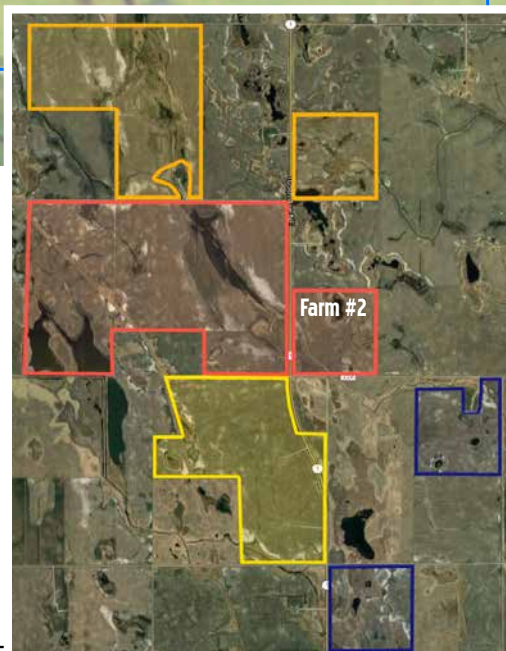




©2017 AgriData, Inc.



©2017 AgriData, Inc.

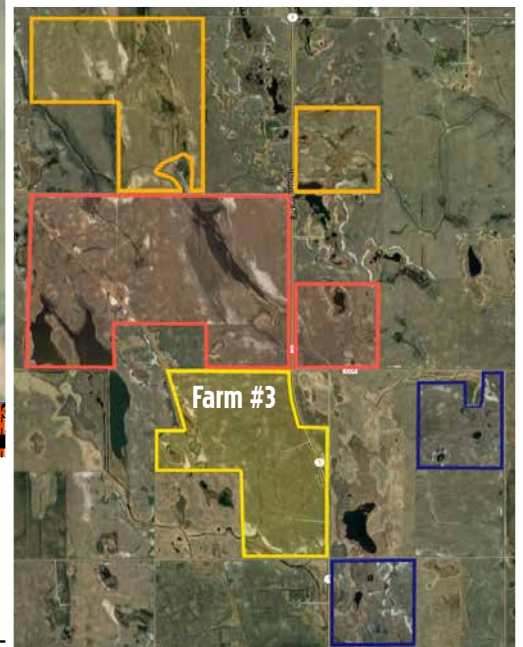
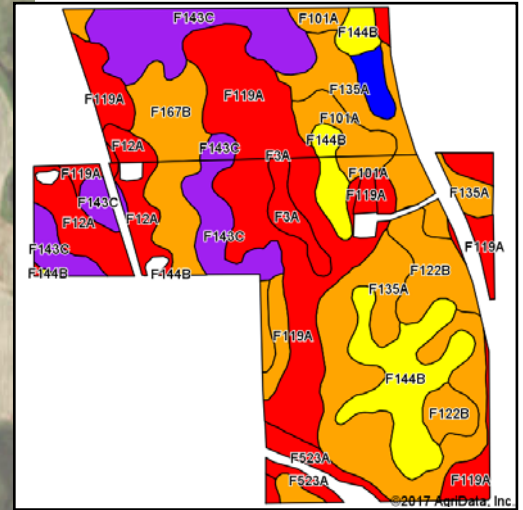
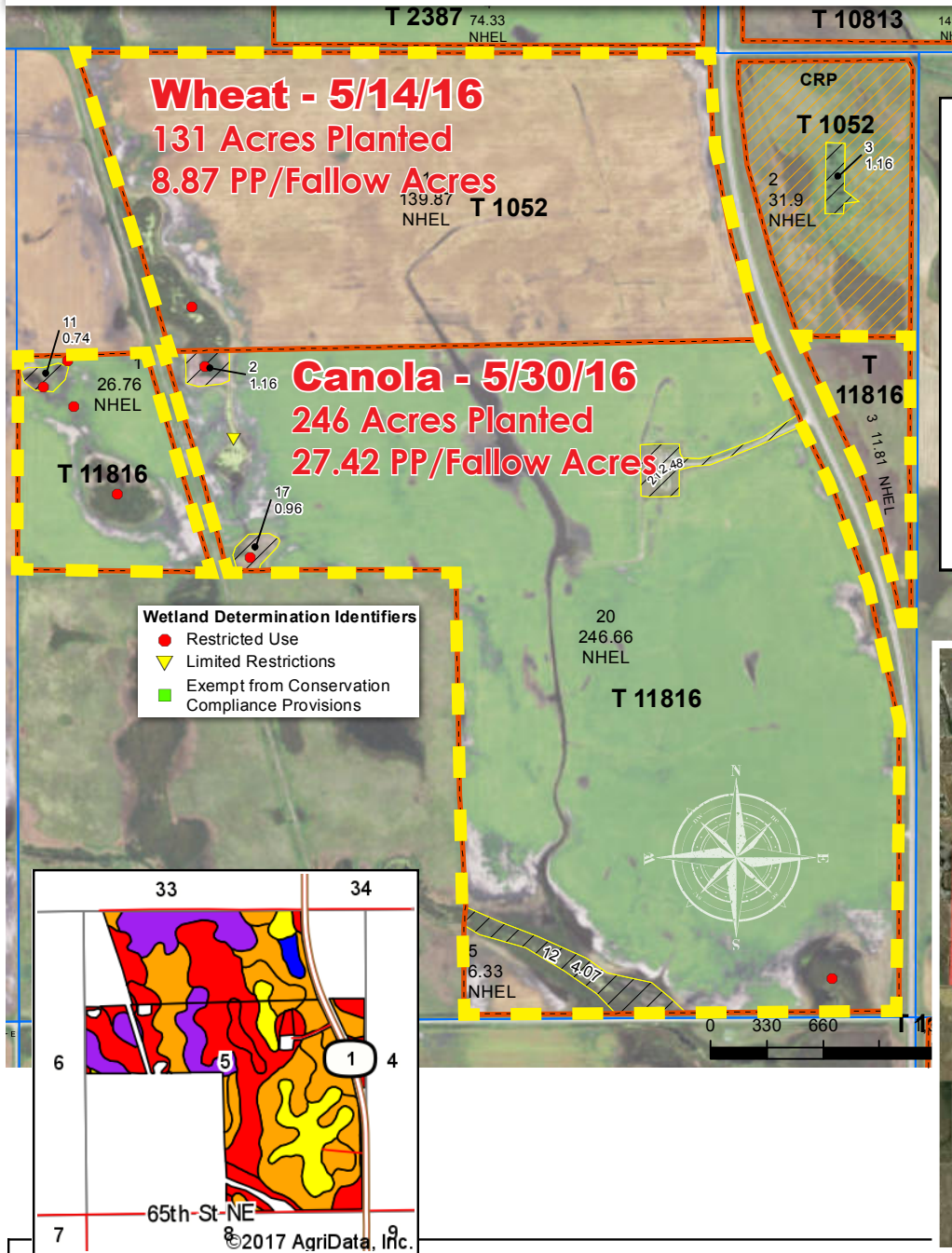


Area Symbol: ND071, Soil Area Version: 22

Code	Soil Description	Acres	Percent of field	PI Legend	Non-Irr Class *c	Productivity Index
F447A	Colvin-Borup complex, saline, 0 to 1 percent slopes	221.12	22.2%		IVw	37
F101A	Hamerly-Wyard loams, 0 to 3 percent slopes	205.18	20.6%		Ile	77
F119A	Vallers-Hamerly loams, saline, 0 to 3 percent slopes	138.47	13.9%		IVw	45
F135A	Hamerly-Cresbard loams, 0 to 3 percent slopes	118.56	11.9%		Ile	75
F144B	Barnes-Buse loams, 3 to 6 percent slopes	105.92	10.6%		IIIle	69
F12A	Vallers, saline-Parnell complex, 0 to 1 percent slopes	59.16	5.9%		IVw	31
F44A	Colvin silt loam, very poorly drained, 0 to 1 percent slopes	56.28	5.7%		Vw	22
F143A	Barnes-Svea loams, 0 to 3 percent slopes	27.65	2.8%		IIc	85
F122A	Svea-Cresbard loams, 0 to 3 percent slopes	27.27	2.7%		IIc	79
F3A	Parnell silty clay loam, 0 to 1 percent slopes	24.67	2.5%		Vw	25
F523A	Lowe-Fluvaquents, channeled complex, 0 to 2 percent slopes, frequently flooded	5.91	0.6%		VIw	22
F143C	Barnes-Buse-Langhei loams, 6 to 9 percent slopes	5.60	0.6%		IVe	55
Weighted Average						55.3

Area Symbol: ND071, Soil Area Version: 22. *c: Using Capabilities Class Dominant Condition Aggregation Method. Soils data provided by USDA & NRCS.

• **Description:** N ½ less 20 AC W of RR tracks, SE ¼ Section 5 • **Cropland Acres:** 431.43+/-

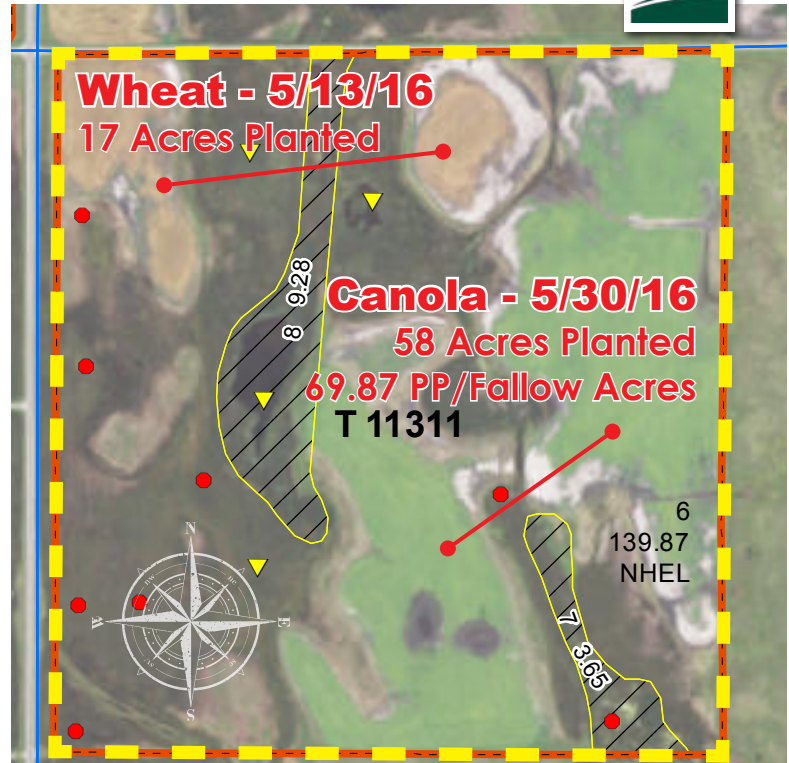
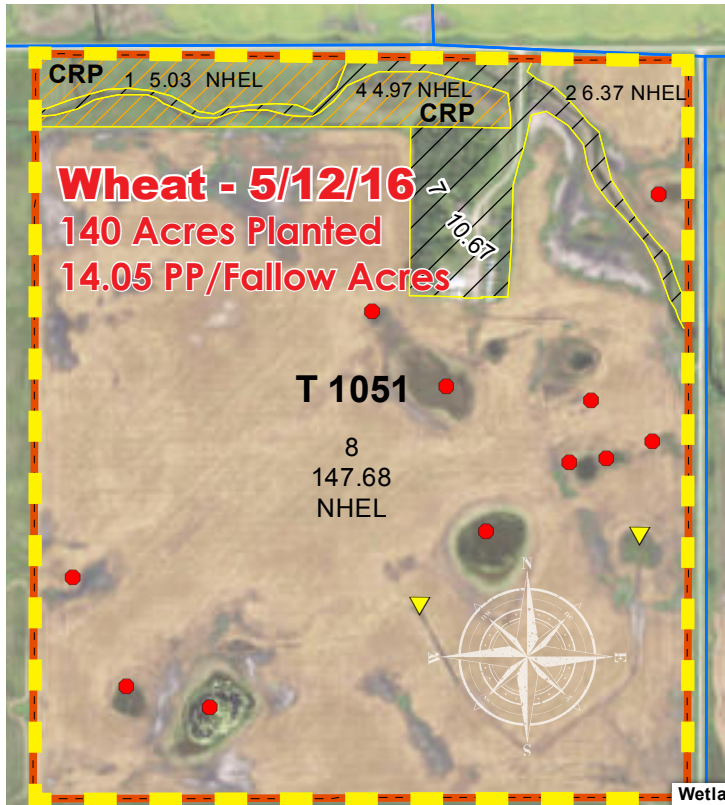


Area Symbol: ND071, Soil Area Version: 22

Code	Soil Description	Acres	Percent of field	PI Legend	Non-Irr Class *c	Productivity Index
F119A	Vallers-Hamerly loams, saline, 0 to 3 percent slopes	110.17	25.5%		IVw	45
F135A	Hamerly-Cresbard loams, 0 to 3 percent slopes	90.00	20.9%		Ile	75
F143C	Barnes-Buse-Langhei loams, 6 to 9 percent slopes	59.63	13.8%		IVe	55
F144B	Barnes-Buse loams, 3 to 6 percent slopes	45.51	10.6%		IIIe	69
F167B	Balaton-Wyard loams, 0 to 6 percent slopes	30.99	7.2%		Ile	73
F122B	Barnes-Cresbard loams, 3 to 6 percent slopes	29.60	6.9%		Ile	76
F12A	Vallers, saline-Parnell complex, 0 to 1 percent slopes	25.21	5.8%		IVw	31
F101A	Hamerly-Wyard loams, 0 to 3 percent slopes	18.00	4.2%		Ile	77
F523A	Lowe-Fluvaquents, channeled complex, 0 to 2 percent slopes, frequently flooded	9.00	2.1%		VIw	22
F3A	Parnell silty clay loam, 0 to 1 percent slopes	7.84	1.8%		Vw	25
F143A	Barnes-Svea loams, 0 to 3 percent slopes	5.35	1.2%		IIc	85
Weighted Average						59.5

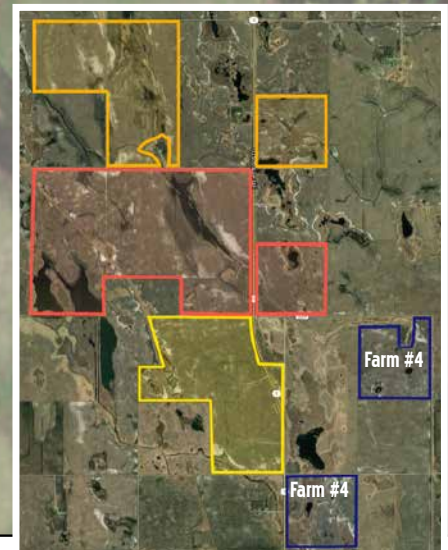
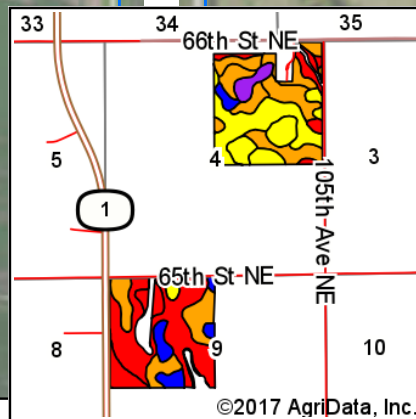
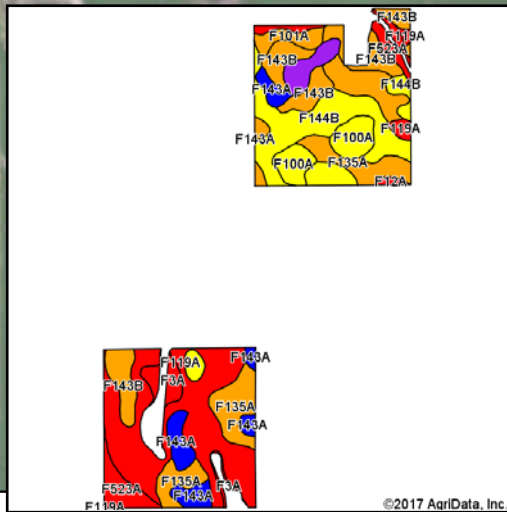
Area Symbol: ND071, Soil Area Version: 22. *c: Using Capabilities Class Dominant Condition Aggregation Method. Soils data provided by USDA & NRCS.

• **Description:** NW ¼ Section 9 & NE ¼ Section 4 less farmstead • **Cropland Acres:** 293.92+/-



Wetland Determination Identifiers

- Restricted Use
- ▼ Limited Restrictions
- Exempt from Conservation Compliance Provisions



Area Symbol: ND071, Soil Area Version: 22

Code	Soil Description	Acres	Percent of field	PI Legend	Non-Irr Class *c	Productivity Index
F119A	Vallers-Hamery loams, saline, 0 to 3 percent slopes	75.20	25.6%		IVw	45
F144B	Barnes-Buse loams, 3 to 6 percent slopes	51.76	17.6%		IIIe	69
F135A	Hamery-Cresbard loams, 0 to 3 percent slopes	39.70	13.5%		Ile	75
F143B	Barnes-Svea loams, 3 to 6 percent slopes	34.87	11.9%		Ile	75
F101A	Hamery-Wyard loams, 0 to 3 percent slopes	20.96	7.1%		Ile	77
F143A	Barnes-Svea loams, 0 to 3 percent slopes	18.86	6.4%		IIc	85
F523A	Lowe-Fluvaquents, channeled complex, 0 to 2 percent slopes, frequently flooded	18.22	6.2%		VIw	22
F100A	Hamery-Tonka complex, 0 to 3 percent slopes	16.88	5.7%		Ile	64
F143C	Barnes-Buse-Langhei loams, 6 to 9 percent slopes	8.57	2.9%		IVe	55
F3A	Parnell silty clay loam, 0 to 1 percent slopes	7.65	2.6%		Vw	25
F12A	Vallers, saline-Parnell complex, 0 to 1 percent slopes	1.25	0.4%		IVw	31
Weighted Average						61.1

Area Symbol: ND071, Soil Area Version: 22. *c: Using Capabilities Class Dominant Condition Aggregation Method. Soils data provided by USDA & NRCS.

North Dakota

U.S. Department of Agriculture

FARM: 4884

Ramsey

Farm Service Agency

Prepared: 2/7/17 3:59 PM

Report ID: FSA-156EZ

Abbreviated 156 Farm Record

Crop Year: 2017

Page: 1 of 6

DISCLAIMER: This is data extracted from the web farm database. Because of potential messaging failures in MIDAS, this data is not guaranteed to be an accurate and complete representation of data contained in the MIDAS system, which is the system of record for Farm Records.

Operator Name	Farm Identifier	Recon Number
LEE SETTINGSGARD		2007 38071 5

Farms Associated with Operator:

4725, 5416, 5930

CRP Contract Number(s): 10004, 10118B

Farmland	Cropland	DCP Cropland	WBP	WRP/EWP	CRP Cropland	GRP	Farm Status	Number of Tracts
2507.59	2451.6	2451.6	79.9	0.0	41.9	0.0	Active	8
State Conservation	Other Conservation	Effective DCP Cropland	Double Cropped	MPL/FWP	Native Sod			
0.0	0.0	2329.8	0.0	0.0	0.0			

	ARC/PLC
ARC-IC	ARC-CO
NONE	WHEAT, CORN, SOYBN
	PLC
	SNFLR, CANOL
	PLC-Default
	NONE

Crop	Base Acreage	CTAP Tran Yield	PLC Yield	CCC-505 CRP Reduction
WHEAT	1084.89		35	0.0
CORN	71.03		53	0.0
SUNFLOWERS	237.22		1018	0.0
SOYBEANS	334.71		22	0.0
CANOLA	218.15		1416	0.0
Total Base Acres:	1946.0			

Farms #1 & 2

Tract Number: 12209 Description: W28-NE29-NW-WSW-SWNE-NWSE33-157-60

BIA Range Unit Number:

HEL Status: NHEL: no agricultural commodity planted on undetermined fields

Wetland Status: Tract contains a wetland or farmed wetland

WL Violations: None

Farmland	Cropland	DCP Cropland	WBP	WRP/EWP	CRP Cropland	GRP
1098.73	1083.97	1083.97	0.0	0.0	0.0	0.0
State Conservation	Other Conservation	Effective DCP Cropland	Double Cropped	MPL/FWP	Native Sod	
0.0	0.0	1083.97	0.0	0.0	0.0	

Crop	Base Acreage	CTAP Tran Yield	PLC Yield	CCC-505 CRP Reduction
WHEAT	504.92		35	0.0
CORN	33.05		53	0.0
SUNFLOWERS	110.4		1018	0.0
SOYBEANS	155.79		22	0.0
CANOLA	101.53		1416	0.0
Total Base Acres:	905.69			

Owners: LEE SETTINGSGARD

BARBARA SETTINGSGARD

Other Producers: None

Farm #2

Tract Number: 2387 Description: SW27-SSE-NNE-SENE-NESE33-157-60

BIA Range Unit Number:

HEL Status: NHEL: no agricultural commodity planted on undetermined fields

Wetland Status: Tract contains a wetland or farmed wetland

WL Violations: None

Farmland	Cropland	DCP Cropland	WBP	WRP/EWP	CRP Cropland	GRP
376.38	371.16	371.16	0.0	0.0	0.0	0.0
State Conservation	Other Conservation	Effective DCP Cropland	Double Cropped	MPL/FWP	Native Sod	
0.0	0.0	371.16	0.0	0.0	0.0	

Crop	Base Acreage	CTAP Tran Yield	PLC Yield	CCC-505 CRP Reduction
WHEAT	172.82		35	0.0
CORN	11.32		53	0.0
SUNFLOWERS	37.79		1018	0.0
SOYBEANS	53.32		22	0.0
CANOLA	34.75		1416	0.0
Total Base Acres:	310.0			

Owners: GRANT SETTINGSGARD

Other Producers: None

Farms #1 & 2

FARM: 4884

North Dakota

U.S. Department of Agriculture

Prepared: 2/7/17 3:59 PM

Ramsey

Farm Service Agency

Crop Year: 2017

Report ID: FSA-156EZ

Abbreviated 156 Farm Record

Page: 4 of 6

DISCLAIMER: This is data extracted from the web farm database. Because of potential messaging failures in MIDAS, this data is not guaranteed to be an accurate and complete representation of data contained in the MIDAS system, which is the system of record for Farm Records.

Tract Number: 10813 Description: SW34-157-60

BIA Range Unit Number:

HEL Status: NHEL: no agricultural commodity planted on undetermined fields

Wetland Status: Tract contains a wetland or farmed wetland

WL Violations: None

Farmland	Cropland	DCP Cropland	WBP	WRP/EWP	CRP Cropland	GRP
149.28	149.28	149.28	0.0	0.0	0.0	0.0
State Conservation	Other Conservation	Effective DCP Cropland	Double Cropped	MPL/FWP	Native Sod	
0.0	0.0	149.28	0.0	0.0	0.0	

Crop	Base Acreage	CTAP Tran Yield	PLC Yield	CCC-505 CRP Reduction
WHEAT	69.54		35	0.0
CORN	4.55		53	0.0
SUNFLOWERS	15.21		1018	0.0
SOYBEANS	21.45		22	0.0
CANOLA	13.98		1416	0.0
Total Base Acres:	124.73			

Owners: LEE SETTINGSGARD

BARBARA SETTINGSGARD

Other Producers: None

Farm #3

North Dakota

Ramsey

Report ID: FSA-156EZ

U.S. Department of Agriculture

Farm Service Agency

Abbreviated 156 Farm Record**FARM: 4884**

Prepared: 2/7/17 3:59 PM

Crop Year: 2017

Page: 5 of 6

DISCLAIMER: This is data extracted from the web farm database. Because of potential messaging failures in MIDAS, this data is not guaranteed to be an accurate and complete representation of data contained in the MIDAS system, which is the system of record for Farm Records.

Crop	Base Acreage	CTAP Tran Yield	PLC Yield	CCC-505 CRP Reduction
CANOLA	13.09		1416	0.0

Total Base Acres: 116.75

Owners: LEE SETTINGSGARD

BARBARA SETTINGSGARD

Other Producers: None

Tract Number: 11816 **Description:** SNW-SNE-SE5-156-60

BIA Range Unit Number:**HEL Status:** NHLE: no agricultural commodity planted on undetermined fields**Wetland Status:** Tract contains a wetland or farmed wetland**WL Violations:** None

Farmland	Cropland	DCP Cropland	WBP	WRP/EWP	CRP Cropland	GRP
300.97	291.56	291.56	0.0	0.0	0.0	0.0
State Conservation	Other Conservation	Effective DCP Cropland	Double Cropped	MPL/FWP	Native Sod	
0.0	0.0	291.56	0.0	0.0	0.0	

Crop	Base Acreage	CTAP Tran Yield	PLC Yield	CCC-505 CRP Reduction
WHEAT	135.72		35	0.0
CORN	8.89		53	0.0
SUNFLOWERS	29.68		1018	0.0
SOYBEANS	41.87		22	0.0
CANOLA	27.29		1416	0.0
Total Base Acres:	243.45			

Owners: LEE SETTINGSGARD

BARBARA SETTINGSGARD

Other Producers: None

Tract Number: 1052 **Description:** LOTS1,2,3,4E OF RR-5-156-60

BIA Range Unit Number:**HEL Status:** NHLE: no agricultural commodity planted on undetermined fields**Wetland Status:** Tract contains a wetland or farmed wetland**WL Violations:** None

Farmland	Cropland	DCP Cropland	WBP	WRP/EWP	CRP Cropland	GRP
172.93	171.77	171.77	0.0	0.0	31.9	0.0
State Conservation	Other Conservation	Effective DCP Cropland	Double Cropped	MPL/FWP	Native Sod	
0.0	0.0	139.87	0.0	0.0	0.0	

Crop	Base Acreage	CTAP Tran Yield	PLC Yield	CCC-505 CRP Reduction
WHEAT	65.09		35	0.0
CORN	4.26		53	0.0
SUNFLOWERS	14.23		1018	0.0
SOYBEANS	20.08		22	0.0
CANOLA	13.09		1416	0.0
Total Base Acres:	116.75			

Owners: LEE SETTINGSGARD

BARBARA SETTINGSGARD

Other Producers: None

Farm #4**FARM: 4884**

North Dakota

U.S. Department of Agriculture

Prepared: 2/7/17 3:59 PM

Ramsey

Farm Service Agency

Crop Year: 2017

Report ID: FSA-156EZ

Abbreviated 156 Farm Record

Page: 4 of 6

DISCLAIMER: This is data extracted from the web farm database. Because of potential messaging failures in MIDAS, this data is not guaranteed to be an accurate and complete representation of data contained in the MIDAS system, which is the system of record for Farm Records.

Tract Number: 11311 Description: NW9156-60

BIA Range Unit Number:

HEL Status: NHEL: no agricultural commodity planted on undetermined fields

Wetland Status: Tract contains a wetland or farmed wetland

WL Violations: None

Farmland	Cropland	DCP Cropland	WBP	WRP/EWP	CRP Cropland	GRP
152.8	139.87	139.87	0.0	0.0	0.0	0.0
State Conservation	Other Conservation	Effective DCP Cropland	Double Cropped	MPL/FWP	Native Sod	
0.0	0.0	139.87	0.0	0.0	0.0	
Crop	Base Acreage	CTAP Tran Yield	PLC Yield	CCC-505 CRP Reduction		
WHEAT	65.09		35	0.0		
CORN	4.26		53	0.0		
SUNFLOWERS	14.23		1018	0.0		
SOYBEANS	20.08		22	0.0		

Tract Number: 1051 Description: NE4-156-60

BIA Range Unit Number:

HEL Status: NHEL: no agricultural commodity planted on undetermined fields

Wetland Status: Tract contains a wetland or farmed wetland

WL Violations: None

Farmland	Cropland	DCP Cropland	WBP	WRP/EWP	CRP Cropland	GRP
174.72	164.05	164.05	0.0	0.0	10.0	0.0
State Conservation	Other Conservation	Effective DCP Cropland	Double Cropped	MPL/FWP	Native Sod	
0.0	0.0	154.05	0.0	0.0	0.0	
Crop	Base Acreage	CTAP Tran Yield	PLC Yield	CCC-505 CRP Reduction		
WHEAT	71.71		35	0.0		
CORN	4.7		53	0.0		
SUNFLOWERS	15.68		1018	0.0		
SOYBEANS	22.12		22	0.0		

[illegible]

request for

due by Tuesday, March 7, 2017

PROPOSAL

2,330
± cropland
acres

Farm #1

Farm #1

Farm #2

Farm #2

Farm #3

Farm #4

Farm #4



**View Property
Location**

SteffesGroup.com
or scan the code!

Settingsgard Family

Ramsey County, ND | Farmland for Rent

Steffes Group, Inc., 2000 Main Avenue East, West Fargo, ND 58078
800.726.8609 | 701.237.9173 | SteffesGroup.com

