



Agriron® Ames, IA

THURSDAY, MARCH 24, 2016 | 10AM

Located at the Farm Progress Show,
1827 217th Street, Boone, IA.
9 miles west of Ames on Highway 30, Exit 137

AUCTIONEER'S NOTE: Auctioneers will run multiple rings with live online bidding available on major equipment. There will be no loading assistance until 2:00PM on sale day. Cars and pickups may enter grounds at 12:00 Noon for self-loading. Registration, terms, and details at SteffesGroup.com. Equipment removal by Saturday, March 26, 2016, unless other arrangements are made. Hauling and loading are available. Contact auctioneers for owner information, new consignments, or changes at 515.432.6000

Details at SteffesGroup.com



TRACK TRACTOR
2000 JD 8410T, 3897 hrs., 16 spd. powershift, 4 hyd., 3 pt., large 1000 PTO, steerable hitch, 22 weights, brown box & globe included, Less than 120 hrs. since \$14,000 spent on bogey wheels, idler bushings & updating steering assembly to 20 series. 16" tracks at 120", cruise, 1600 hrs. on tracks, S/N RW8410T901261

4WD TRACTORS
2011 JD 9530, 2633 hrs., powershift, 5 hyd., BB, active ride seat, buddy seat, ClimaTrak comfort package, AM/FM CD, HID lights, CAT 4 hitch, GS Auto-Trac ready, case drain, 1 pr. 1500 lbs. rear weights, 20 mid mount 105lbs. weights, 1 pr. 1500 lbs. front weights, Michelin 800/70R38 duals, S/N 1RW9530PCBP022980

1991 Case-IH 9250, 4840 hrs., 12 spd. powershift, 3 hyd., BB, Cummins 300hp, tight kingpins, rebuilt steering column, wired for Trimble autosteer, 18.4Rx42 hub mt. duals, S/N JCB0027826

MFWD TRACTORS
1996 Case-IH 7230, 7,237 hrs., powershift, 4 hyd., 3 pt., 1000 PTO, quick hitch, 18 front weights, 20.8R38 duals, NEW inside tires, 420/85R28 fronts, S/N JB0071177

Case 3294, 5622 hrs., partial powershift, 2 hyd., 3 pt., 1000 PTO, AM/FM, 12 front weights, front fenders, 20.8-38 duals

2WD TRACTORS
1991 Agco-Allis 5680, hrs. unknown, open station, ROPS, 8 spd. plus 2 spd., 3 hyd., 3 pt., 540 PTO, sells w/ Westendorf TS-25 loader, 84" bucket, 16.9R34 rear tires, S/N 001079

1974 IH 1066, 7831 hrs., open station, 8 spd., 2 hyd., 3 pt., 540/1000 PTO, TA, front fenders 18.4x38 rears S/N 2610172U040895

ANTIQUE TRACTORS
JD 730 diesel, WF, 3pt., fenders
JD 730 diesel, NF, 3pt., fenders

PLANTERS
2009 JD DB90, CCS planter, 36x30", draw bar, Refuge Plus, 850 gal. liquid nitrogen, elec. pump, 20/20 Air Force, Yetter air ride shark tooth row cleaners, rubber closing wheels, JD units, Pro drive, TruCount air clutches, hyd. drive, Keaton seed firmers, pneumatic down pressure, tri fold markers, S/N A0DB90X720114

2002 JD 1770, Conservation planter, 16x30", 2 pt., front fold, ground driven, MaxEmerge Plus, VacuMeter units, 3 bu. boxes, tri fold markers, 1/2 width disconnect, spring down pressure, Precision corn meter parts, JD bean disc, rubber closing wheels, 15,000 acre on planter, JD 250 monitor, S/N H011770A695278

SPRAYERS
2000 CASE-IH SPX 3200B, 1854 hrs., self-propelled sprayer, 90' boom, 800 gal., chem inductor, foamer, fenders, 380/90R46

1998 Tyler Patriot 150, 4400 hrs., self-propelled sprayer, 80' boom, 750 gal. tank, 20" tips, Raven 440, 60% tread

2012 Top Air, 3 pt. sprayer, Cat 3 or 4N, 80' boom, (2) 300 gal. tanks, 50 gal. rinse, 4 shutoff, 3 way nozzle bodies, 20" spacing, flow-back, Raven 450,

Demco Model 9488131, 3pt. spray boom, 90' boom, 6 section boom, 15" spacing, 3 nozzle body, 5 section control, S/N C00048

STRIP TILL - SIDE DRESS - CADDY CART - SADDLE TANKS

2010 Salford 570 RTS strip till, 30", 13 wave 20" coulters, 12 NH3 (DMI aftermarket) shanks on 30" spacing, HD NH3 tank tow hitch, single pt. depth control, rolling basket harrow, (delivery maybe available in Iowa) S/N 102662

Fast 8100 side dress, 60", 1600 gal. poly tank, fluted coulters, Clymer row units, TeeJet shutoffs, hyd. wing fold, 4" fill, Michelin 380/90R46

Dalton AG D3040H side dress, 18x30", 3 pt., 45", 19 knife, 5 section, Yetter row units, 19" coulters, spring loaded wavy coulters closer, pin adjust gauge wheels on main & wings, single Raven NH3 super cooler, single manifold, S/N 09211

Zoskes SD2530 side dress, 24x30", 3 pt., 60", 5 section, liquid nitrogen, Yetter row units, triple manifold

DuoLift DS-Series fertilizer caddy cart, 2000 gal., 4 wheel steer, 2" fill, 3" discharge, 18.4x26 lug tires
Demco SideQuest 500 gal., saddle tank, 2" plumbing

FIELD CULTIVATOR
JD 2210 field cultivator, 64", 7" knock off sweeps, 6" spacing, 5 section, gauge wheels, tandems across, full float hitch, single pt. adjust, 4 bar coil tine harrow, SN N02210X004114

Glenco field cultivator, 24", w/ harrow, walking tandems on main

BALER - MOCO
2013 NH BR7090 round baler, net wrap, large 1000 PTO, Specialty Crop Xtra Sweep pickup 7'6", liquid system "The Juice" 55 gal., 6339 bales, 21.5L-16.15L, S/N YCN175192

2007 CASE-IH DCX131 mower conditioner, 13', 1000 PTO, drawbar style swivel hitch, hydro swing, shock hubs, flail conditioner, 31x16.5 tires, S/N Y7B669122

WHEEL LOADER - TILE PLOW - SCRAPER
Case W20 wheel loader, shows 1022 hrs., 4x4, 84" bucket, 17.5-25 tires, S/N 5610

Johnson tile plow, pull type, 6" tube, 425/65R22.5 tires

Johnson tile cart, tandem axle, hyd. drive, 265/75R16

(4) Rolls of 4" plastic tile

(2) Rolls of 5" plastic tile

1976 Reynolds 14C box scraper, 14 yd., 1125x38, S/N 11099

SKIDSTEER ATTACHMENTS

TiltSpear hydraulic tilting double bale spear, 120.5"Wx30"Hx48"L rated at 3,800lbs, sold with a universal mounting setup to allow bolt/weld on attachments

Skidloader backhoe attachment, w/ 20" bucket

Hawz 84" rock and brush grapple, heavy duty, cylinder protection, NEW

Hawz 76" root grapple, cylinder protection, heavy duty, NEW

Hawz 74" rock and brush grapple, heavy duty, cylinder protection, NEW

Hawz 68" rock and brush grapple, heavy duty, cylinder protection, NEW

(2) Hawz Tree Puller push bar, heavy duty, NEW

(2) Hawz Receiver hitch 2" tube, NEW

(2) Weld On Quick Tach Plate, NEW

SEMI TRUCKS - PICKUP

1999 Peterbilt 377, 902,120 miles, day cab, Cummins N14 Plus -370, AM/FM, CD, air ride susp., air ride cab, air ride seat, air slide, twin 120 gal. aluminum fuel tanks, 236" WB, 295/75R22.5 drives on steel rims, 275/80R22.5 steers on aluminum rims, VIN 1XP-CD69X-6XD482544

1991 Freightliner FLD 120, 816,264 miles, day cab, Cummins 365, Eaton Fuller 9 spd., air ride susp., air ride cab, Cush-N-Aire seat, air slide, twin alum fuel tanks, 206" WB, Michelin 275/80R22.5 drives on steel rims, 275/80R22.5 steers on aluminum rims

1992 Ford F250 XLT, miles unknown, 4WD, 5.8L, auto, PW, PL, bench seat, cruise, lock out hubs, Stahl utility bed, 235/85R16, VIN 1FTHF26H3NLA34613

WAGONS - FEED WAGON

(2) Parker 625 gravity flow wagons, lights, brakes, windows, truck tires

Parker 4000 gravity flow wagon, LH 2 door dump, Parker 14T gear, 16.5-L16 floatation tires

FarmAid 560 feed wagon, reel mixer, Digi-Star RD2500V scale, LH discharge, 1000 PTO, 445/65R22.5, S/N 25093

SEED TENDERS - AUGER

2008 Friesen 375 Seed Tender, triple axle, 6" conveyor, tarp, electric start

Friesen 4 box seed tender on tandem axle trailer, 2 5/16" ball

Feterl 120'X13" swing hopper, 540 PTO

FENCING - EQUIPMENT

(120) 20' Continuous Fence Panels, 5 bar tall, w/ clips & connectors, NEW

(60) 12' Free Standing Interlocking Corral Panels, NEW

2500 gal. tank

1000 gal. fuel tank

JD Quick hitch, Category 2, NEW

(22) JD front weights & brackets, off JD 8370RT

Rock Box

Miller 250 welder w/ 10,000 watt generator, Kohler gas motor, mounted on skid w/ Weatherguard toolbox & torch reel, 644 hrs.

Ilchuk tree mover, loader tractor mounts

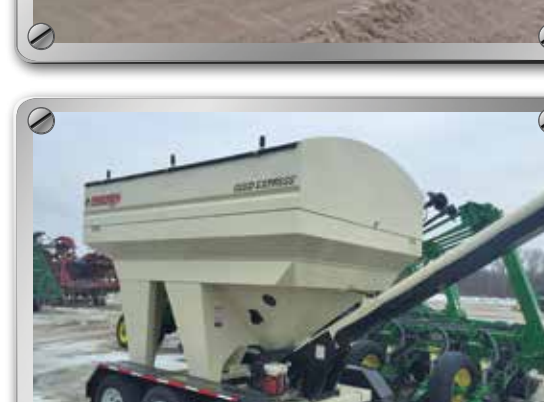
Straw crimper, 66" wide

Shelving for 2010 Chevy Van

Oak & Ash rough cut lumber, stickered & tests between 10-12%, various dimensions

Cattle yard fogger/mister, 3pt.

Aluminum flatbed, 8'6"x8' wide, off of 2008 Chevy dually



view other side for pictures, check in dates & load out



PLEASE NOTE: There will be no loading assistance until 2pm on sale day. Cars and pickups may enter grounds at 12 Noon for self loading.

TERMS: All items sold as is where is. Payment of cash or check must be made sale day before removal of items. Statements made auction day take precedence over all advertising. \$35 documentation fee applies to all titled vehicles. Titles will be mailed. IA Sales Tax laws apply. Canadian buyers need a bank letter of credit to facility border transfer.

Aglron® Ames, IA

Located at the Farm Progress Show,
1827 217th Street, Boone, IA.
9 miles west of Ames on Highway 30, Exit 137



THURSDAY, MARCH 24, 2016 | 10AM



ATTENTION

CONSIGNORS: CONSIGNMENTS WILL BE ACCEPTED ON

Monday, March 7th – Friday, March 11th from 8am-5pm
Saturday, March 12th from 8am – Noon
Monday, March 14th – Friday, March 18th from 8am-5pm
Saturday, March 19th from 8-Noon

CONSIGNMENTS NEED TO BE ON THE LOT BY Saturday, March 19th

NO CONSIGNMENTS TAKEN starting Monday, March 21st

BUYERS:

LOAD OUT SCHEDULE:

Friday, March 25th, 8am-5pm
Saturday, March 26th, 8am – 12 Noon
Other load out times are by appointment!



Online Bidding Available!



Steffes Group, Inc.
605 East Winfield Avenue
Mt. Pleasant, IA 52641

PRESORTED
STANDARD
US POSTAGE
PAID
Permit #315
FARGO, ND

Aglron® Events

West Fargo, ND
Wed., March 9 @ 10AM
Red River Valley Fairgrounds,
West Fargo, ND

Mt. Pleasant, IA
Thurs., March 17 @ 9AM
Mt. Pleasant, IA Facility

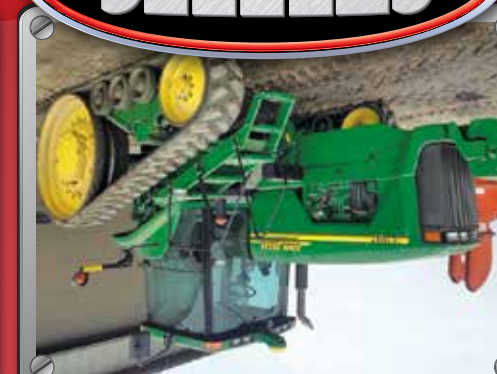
Ames, IA
Thurs., March 24 @ 10AM
Farm Progress Show site,
Boone, IA

Litchfield, MN
Thurs., March 31 @ 10AM
Litchfield, MN Facility



West Fargo, ND 701.237.9173 Grand Forks, ND 701.203.8400 Litchfield, MN 320.693.9371 Mt. Pleasant, IA 319.385.2000 Ames, IA 515.432.6000 Sioux Falls, SD 605.271.7730

Selling Land & the Equipment to Farm !!



THURSDAY, MARCH 24, 2016 | 10AM

Ames, IA

Aglron®

Located at the Farm Progress Show, 1827 217th Street, Boone, IA.
9 miles west of Ames on Highway 30, Exit 137

Details at SteffesGroup.com