

AUCTION

TIMED ONLINE

Farm Equipment

Opens: Tuesday, November 28

CLOSES: TUESDAY, DECEMBER 5 | 12PM MST 2023

EQUIPMENT LOCATED AT 990 MONTANA 16 NORTH,

Raymond, Montana

TRACTORS

1995 Ford New Holland 9680, 2,607 actual hrs., 4WD, deluxe cab, 12 spd., 4 hyd., rear suitcase weights, 20.8-42 duals, S/N D101852
1983 Versatile 835, shows 6,256 actual hrs., 4WD, 855 Cummins, 12 spd., 4 hyd., return flow, decelerator pedal, 18.4-38 duals, S/N 000053
2014 CAT Challenger MT685D, 1,956 actual hrs., MFWD, deluxe cab, OptiRide Plus cab susp., CVT trans., front susp., TopCon integrated auto steer, 5 hyd., 3 pt., quick hitch, 1000 PTO, diff lock, rear fender controls, HID light pkg., front suitcase weights, rear wheel weights, 380/80R36 front duals, 480/80R50 press steel duals, S/N Z08J01321
1967 John Deere 4020, shows 6,719 hrs., 2WD, diesel, 8 spd. syncro, 3 hyd., 540 PTO, Dual loader w/96" bucket, rear wheel weights, 10.00-16SL front tires, 18.4-34 rear tires, S/N T223R173805R

Preview:

November 28 - December 5
from 8AM - 5PM

Loadout:

December 5 - December 15
from 8AM - 5PM



COMBINES

2013 Massey Ferguson 9540, 1,882 sep. hrs., 2,404 engine hrs., rotary corn/bean, 2WD, deluxe cab, deluxe seat, deluxe controls, lateral tilt feeder house, AG3000 integrated auto steer, NovAtel Pinwheel technology GNSS + L-Band w/ Garmin, power fold 350 bu. hopper, power fold ladder, electric sieve, adj. 24' unloading auger, deluxe HID light pkg., HD adj. rear axle, MAV fine cut chopper, (2) sets concaves, (2) sets sieves, 520/85R42 straddle duals, 750/65R26 rears, single owner, S/N M9540EHC171115
2013 Massey Ferguson 9540, 2,102 sep. hrs., 2,627 engine hrs., rotary corn/bean, 2WD, deluxe cab, deluxe seat, deluxe controls, lateral tilt feeder house, AG3000 integrated auto steer, NovAtel Pinwheel technology GNSS + L-Band w/ Garmin, power fold 350 bu. hopper, power fold ladder, electric sieve, adj. 24' unloading auger, deluxe HID light pkg., HD adj. rear axle, MAV fine cut chopper, (2) sets concaves, (2) sets sieves, 520/85R42 straddle duals, 750/65R26 rears, single owner, S/N M9540EHC171122
2013 Massey Ferguson 9540, 2,065 sep. hrs., 2,584 engine hrs., rotary corn/bean, 2WD, deluxe cab, deluxe seat, deluxe controls, lateral tilt feeder house, AG3000 integrated auto steer, NovAtel Pinwheel technology GNSS + L-Band w/ Garmin, power fold 350 bu. hopper, power fold ladder, electric sieve, adj. 24' unloading auger, deluxe HID light pkg., HD adj. rear axle, MAV fine cut chopper, (2) sets concaves, (2) sets sieves, 520/85R42 straddle duals, 750/65R26 rears, single owner, S/N M9540EHC171116

HEADS & HEADER TRAILERS

(3) **2014 MacDon FD75**, flex drapers, 35', flipover reel, fore/aft, poly, return to height, stubble lights, buddy wheels, light pkg., slow speed transport, single owner, S/N 252118-14, S/N 253595-14, S/N 252119-14
2012 Massey Ferguson 1230, corn head, 12x30", knife rolls, electric deck plates, stubble lights, less than 2,000 acres, single owner, S/N AGCM1230ACHCH1361
2008 Massey Ferguson 1230, corn head, 12x30", knife rolls, electric deck plates, stubble lights, less than 2,000 acres, single owner, S/N HT27243
2003 Agco 4000, pickup head, 13', SwathMaster pickup, S/NSM41185
2002 Agco, pickup head, 13', SwathMaster pickup, S/N SL41170
(2) Unverferth Roadrunner 530, tandem axle header trailers, 30', dolly front, torsion susp., light pkg., ST235/75D15 tires

PLANTER

2005 John Deere 1770NT, CCS planter, 12x30", 2 pt., mid-row banders, liquid fertilizer, pneumatic down pressure, vari-rate ground drive pump, 300 gal. poly tank, in-furrow liquid, Yetter row cleaners, plumbed rear hitch, single fan, hyd. fold markers, S/N A01770Z710133

AIR SEEDER

1995 John Deere 737, 8-run, 11" spacing, 40', steel packer wheels, carbine tips, walking tandems, 11L-15 tires, John Deere 787 tow-between 2-compartment commodity cart, 230 bu., ground drive, single hyd. fan, 6" loading auger, 23.1-26 tires, S/N H00737X670114, cart S/N N00787X00s1348

SEED TENDER

Hitch Doc HSC2000, tandem axle, wireless remote, Honda GX240 electric start gas motor, hyd. fold 6" auger, torsion susp., 7.00-15LT tires, rear hitch, S/N HSC3085

TANDEM DISC

Krause 2165, 45', rock flex, 3-section, 21-1/2" discs, 9" spacing, disc scrapers, hyd. fold, hyd. adj. hitch, walking tandems across, 12.5L-15 tires, new cylinders installed

TRAILERS

(2) 1977 Donahue 1050XL, tandem axle combine trailers, 208"x144", 9.50R16.5LT tires
(2) Shop-Built, single axle utility trailers, 176"x102", 9:00-20 dual tires, no title, bon-roadable

GRAIN HANDLING EQUIPMENT

Feterl 23090, rotary grain cleaner, 8" fill auger, 10'x5" unloading auger, AJAX electric motor, 5 hp., 230v, 1 phase, P235/75R15 tires
(2) GSC OSK40, scalper grain cleaners, 44"x24" hopper, 42" screen, 230v, 1 phase
Farm King 16104, swing hopper auger, 104'x16", w/remotes, hyd. hopper walker, hyd. auger lift, poly spout ext., 1000 PTO, 16.5L-16.1 tires, S/N Y1610414000029
Wheatheart, hyd. transfer auger, 9'x7", 48"x36" low pro hopper, 4.80-8 tires

BIN ACCESSORIES

(2) Sukup, bin sweeps, 16'x7", WEG 2 hp. electric motor, 115/230v, 1740 rpm, 1 phase
Sukup, bin sweep, 16'x7", Dayton 2 hp. electric motor, 115/230v, 1725 rpm, 1 phase
(3) Bin sweeps, 10'x5", WEG 1-1/2 hp. electric motors, 115/230v, 1740 rpm, 1 phase

Teron Farms Inc. and Paulson Brothers

CONTACT TERRY FINK, 406.985.7175

OR STEFFES GROUP REPRESENTATIVES, BRAD OLSTAD, 701.238.0240 OR KYLE MILAM, 701.441.1151

SCAN HERE FOR ONLINE LISTING!



SPRAYER & CHEMICAL EQUIPMENT

Brandt QF1500, pull-type sprayer, 95', 20" spacing, single nozzle bodies, 1,000 gal. poly tank, 2" fill, ACC hyd. pump, 25 gal. fresh water tank, inductor, 6.5L-16.1 tires, 6.70-15 boom tires, S/N 47464
Focus Industries Handler III, inductor tank system, 70 gal. poly tank, 42"x44"x41", Banjo fittings, S/N 11298
Yetter 1600, nurse tank, 4-wheel, 1,600 gal. poly tank, 18.4-26 tires, S/N 04726

FORAGE & LIVESTOCK EQUIPMENT

Haybuster 1100, tub grinder, Tilt Big Bite hammermill, 18" belt conveyor, 1000 PTO, walking tandems, 9.5L-15SL tires, S/N 9112379
Oswalt Industries 280-H Ensilimixer, horizontal mixer, LH discharge, 28" conveyor, 540 PTO, 10.00R20 tires, S/N 43798
Patriot, tandem axle portable creep feeder, pin hitch, gates, 255/70R16 tires

OTHER EQUIPMENT

1971 Caterpillar 120, motor grader, AWD, 14' moldboard, 14.00-24 tires, S/N10R1858
Land Pride FD2572, finishing mower, 72", 3 pt., 540 PTO, S/N L88247
Midland box, 18'x95"x58"
PARTS & FARM SUPPORT ITEMS
MacDon, asst. guards MD118344/MD118345, hold down clamps, nuts & bolts
SwathMaster pickup, 13', 7-belt, parts only



2014 CAT CHALLENGER MT685D



1995 FORD NEW HOLLAND 9680



1983 VERSATILE 835

701.570.0600 | SteffesGroup.com

Steffes Group, Inc., 14083 51st St NW, Williston, ND 58801

TERMS: All items sold as is where is. Payment of cash or check must be made sale day before removal of items. Statements made auction day take precedence over all advertising. \$35 documentation fee applies to all titled vehicles. Titles will be mailed. Canadian buyers need a bank letter of credit to facilitate border transfer.

See additional photos on back side!



AUCTION

TIMED ONLINE

Farm Equipment

Raymond, Montana

CLOSES: TUESDAY, DECEMBER 5 | 12PM MST 2023



701.570.0600 | SteffesGroup.com
Steffes Group, Inc., 14083 51st St NW, Williston, ND 58801



Steffes Group, Inc.
2000 Main Ave East,
West Fargo, ND 58078

PRESORTED
STANDARD
US POSTAGE
PAID
Permit #315
FARGO, ND



2013 MASSEY FERGUSON 9540



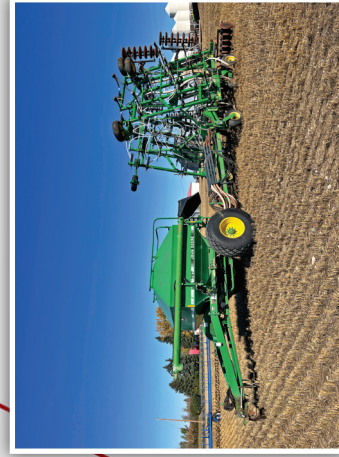
2013 MASSEY FERGUSON 9540



2013 MASSEY FERGUSON 9540



2005 JOHN DEERE 1770NIT



1995 JOHN DEERE 737



(3) 2014 MACDON FD75



1967 JOHN DEERE 4020



1971 CATERPILLAR 120



BRANDT QF1500



HITCH DOC HSC2000



(2) 1977 DONAHUE 1050XL

Teron Farms Inc. & Paulson Brothers Farm Equipment

TERRY FINK, 406.895.7175