

**LIVE!**

**E&M Webster Family Partnership Farm**

**2013 John Deere 9460R**

# AUCTION

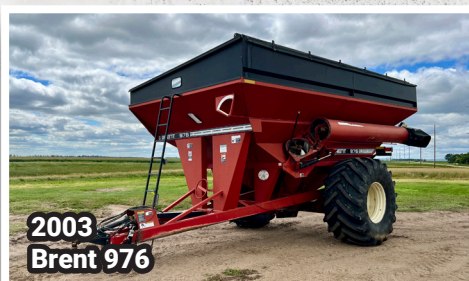
**Tuesday, September 10 | 10 AM CDT 2024**

**AUCTIONEER'S NOTE:** E&M Webster Family Partnership has rented their land and will be selling an excellent line of equipment at this LIVE auction. Most major items are single-owner and purchased new. This will be an excellent opportunity to purchase good, clean, low-hour equipment!

**PREVIEW:** September 3 - 10, 8 AM - 5 PM.

**LOADOUT:** September 10 - 16, 8 AM - 5 PM.

**8667 Highway 11, Ellendale, ND 58436**



Scan For Auction Details!

**Alan Webster, (605) 390-7078**  
Contact Steffes Group Representative Brad Olstad at (701) 238-0240

**Browse more items and details available online!**



**SteffesGroup.com | (701) 237-9173**

Steffes Group, Inc., 2000 Main Avenue E, West Fargo, ND 58078

All items sold as is where is. Payment of cash, check, or credit card must be made sale day before removal of items. Statements made auction day take precedence over all advertising. Additional fees may apply. Titles will be mailed. Canadian buyers need a bank letter of credit to facilitate border transfer. Scott Steffes ND81, Brad Olstad ND319, Max Steffes ND999, Justin Ruth ND2019, Scott Gillespie ND1070

