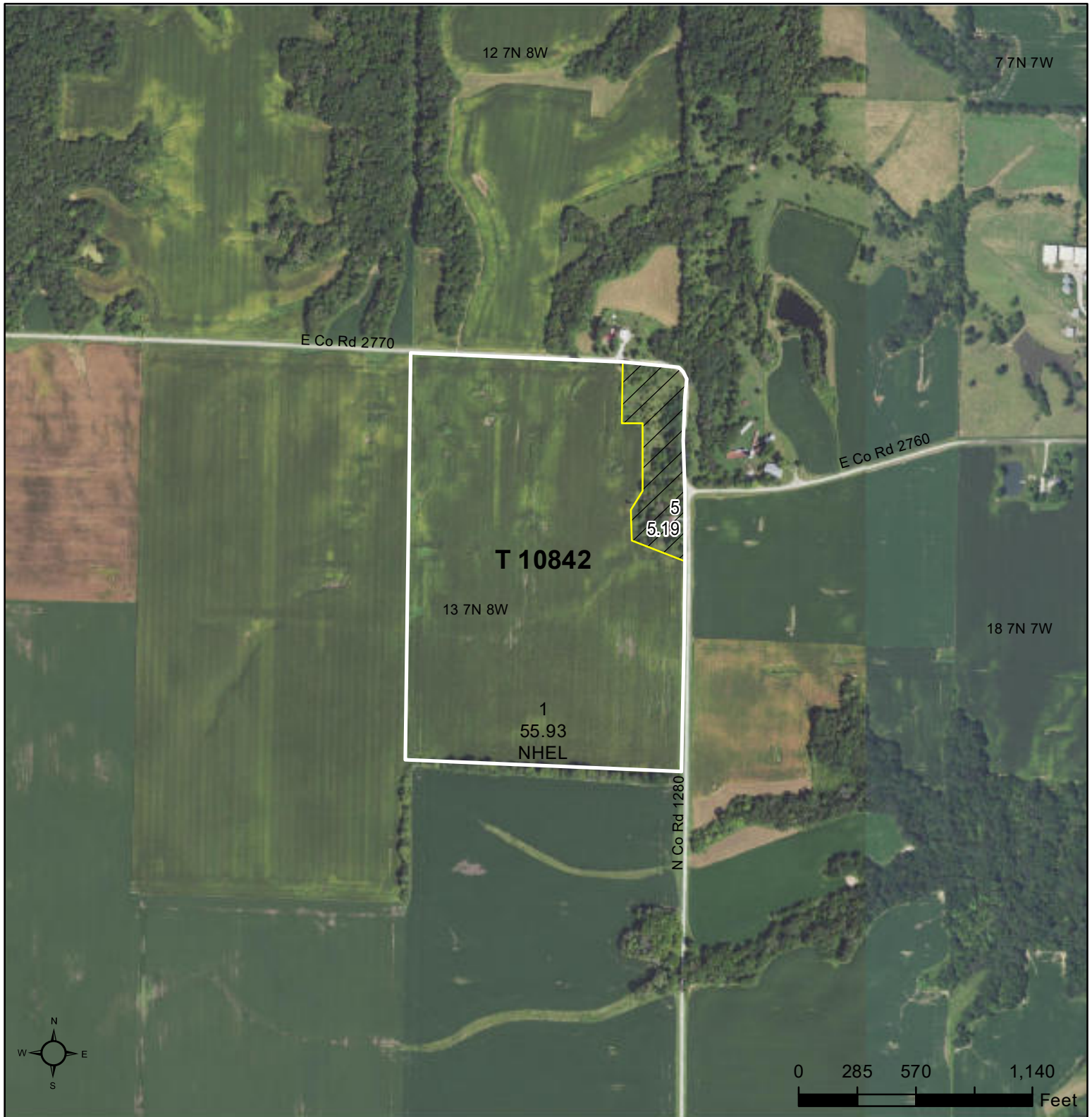




United States
Department of
Agriculture

Hancock County, Illinois

WHT,W=Wheat,SRW,GR C=Corn,Yel,GR SB,S,B=Soybeans,Com,GR
WW=MixFG,IGS,LS Hay=MixFG,IGS,FG Alf=Alfalfa,FG Pasture,Past=MixFG,IGS,GZ
Non-Irrigated unless noted on the map



Common Land Unit

- Non-Cropland
- Cropland

Roads

Tract Boundary

Wetland Determination Identifiers

- Restricted Use
- Limited Restrictions
- Exempt from Conservation Compliance Provisions

Tract Cropland Total: 55.93 acres

2023 Program Year

Map Created November 22, 2022

Farm 10016

Tract 10842

IL067_T10842

United States Department of Agriculture (USDA) Farm Service Agency (FSA) maps are for FSA Program administration only. This map does not represent a legal survey or reflect actual ownership; rather it depicts the information provided directly from the producer and/or National Agricultural Imagery Program (NAIP) imagery. The producer accepts the data 'as is' and assumes all risks associated with its use. USDA-FSA assumes no responsibility for actual or consequential damage incurred as a result of any user's reliance on this data outside FSA Programs. Wetland identifiers do not represent the size, shape, or specific determination of the area. Refer to your original determination (CPA-026 and attached maps) for exact boundaries and determinations or contact USDA Natural Resources Conservation Service (NRCS).