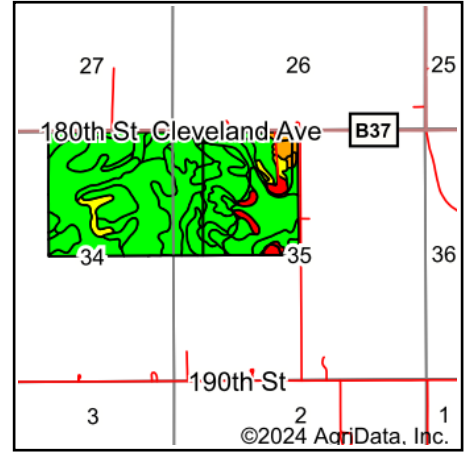
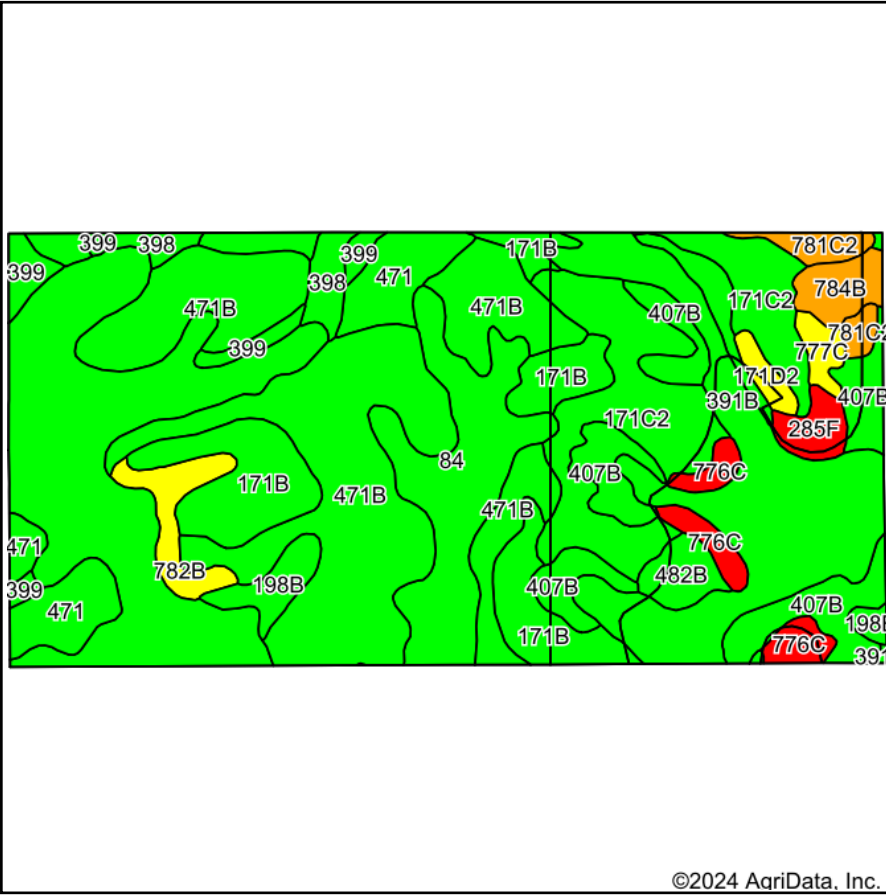


Soils Map



State: **Iowa**
 County: **Floyd**
 Location: **35-96N-15W**
 Township: **Niles**
 Acres: **317.39**
 Date: **9/30/2024**



Maps Provided By:

 © AgriData, Inc. 2023 www.AgriDataInc.com



Soils data provided by USDA and NRCS.

©2024 AgriData, Inc.

Area Symbol: IA067, Soil Area Version: 29

Code	Soil Description	Acres	Percent of field	CSR2 Legend	Non-Irr Class *c	CSR2**	CSR	Bromegrass alfalfa AUM	Bromegrass alfalfa hay Tons	Corn Bu	Kentucky bluegrass AUM	Oats Bu	Smooth bromegrass AUM	Soybeans Bu
84	Clyde silty clay loam, 0 to 3 percent slopes	70.72	22.1%		llw	88	77							
471B	Oran loam, 2 to 5 percent slopes	70.12	22.1%		lw	74	79							
391B	Clyde-Floyd complex, 1 to 4 percent slopes	35.77	11.3%		llw	87	73							
171C2	Bassett loam, 5 to 9 percent slopes, eroded	30.05	9.5%		llle	77	62	10.3	6.1	174	3.9	88.5	6	50
171B	Bassett loam, 2 to 5 percent slopes	26.58	8.4%		lle	85	79	10.7	6.4	215	3.9	92	6.4	62
407B	Schley silt loam, 1 to 4 percent slopes	24.25	7.6%		llw	81	69							

Soils data provided by USDA and NRCS.

Code	Soil Description	Acres	Percent of field	CSR2 Legend	Non-Irr Class *c	CSR2**	CSR	Bromegrass alfalfa AUM	Bromegrass alfalfa hay Tons	Corn Bu	Kentucky bluegrass AUM	Oats Bu	Smooth bromegrass AUM	Soybeans Bu	
471	Oran loam, 0 to 2 percent slopes	15.72	5.0%		lw	79	84								
776C	Lilah sandy loam, 3 to 9 percent slopes	5.87	1.8%		IVe	5	8								
782B	Donnan loam, 2 to 5 percent slopes	5.47	1.7%		IIe	43	50								
399	Readlyn silt loam, 1 to 3 percent slopes	5.39	1.7%		lw	91	89								
198B	Floyd loam, 1 to 4 percent slopes	4.62	1.5%		IIlw	89	74								
398	Tripoli clay loam, 0 to 2 percent slopes	4.36	1.4%		IIlw	82	79								
784B	Riceville silt loam, 1 to 4 percent slopes	4.06	1.3%		IIlw	68	50								
482B	Racine loam, 2 to 5 percent slopes	3.67	1.2%		IIe	76	79								
781C2	Lourdes loam, 5 to 9 percent slopes, moderately eroded	3.61	1.1%		IIIe	68	35								
285F	Burkhardt sandy loam, 14 to 30 percent slopes	3.12	1.0%		VIIe	5	5								
777C	Wapsie loam, 5 to 9 percent slopes	2.16	0.7%		IIIe	43	33								
171D2	Bassett loam, 9 to 14 percent slopes, eroded	1.85	0.6%		IIIe	54	56	9.6	5.8	162	3.4	81	5.6	44	
Weighted Average						1.92	78.3	72	1.9	1.1	35.4	0.7	16.6	1.1	10.2

**IA has updated the CSR values for each county to CSR2.

*c: Using Capabilities Class Dominant Condition Aggregation Method