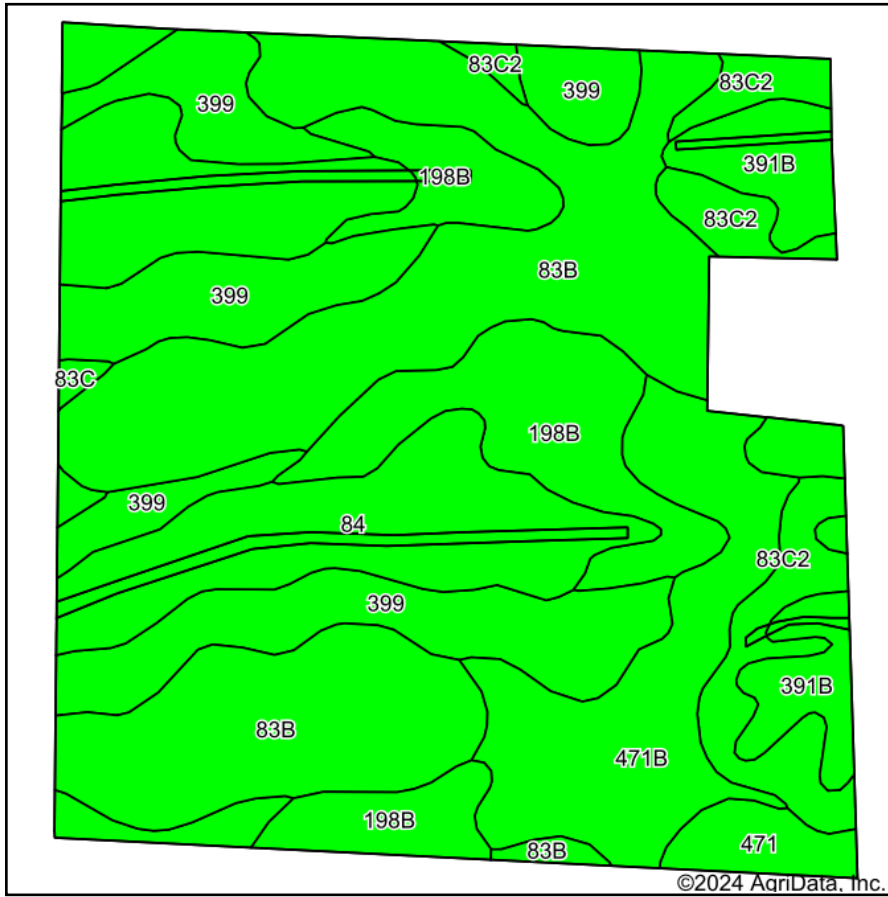
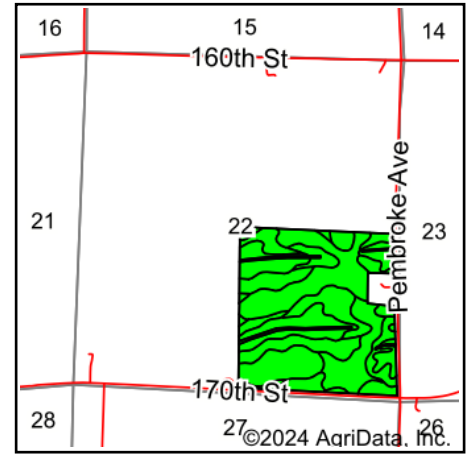


Soils Map



Soils data provided by USDA and NRCS.



State: **Iowa**
 County: **Chickasaw**
 Location: **22-96N-12W**
 Township: **Jacksonville**
 Acres: **144.61**
 Date: **8/8/2024**



Maps Provided By:

 CUSTOMIZED ONLINE MAPPING
 © AgriData, Inc. 2023 www.AgriDataInc.com



Area Symbol: IA037, Soil Area Version: 29

Code	Soil Description	Acres	Percent of field	CSR2 Legend	Non-Irr Class *c	CSR2**	CSR	Brome grass alfalfa AUM	Brome grass alfalfa hay Tons	Corn Bu	Kentucky bluegrass AUM	Oats Bu	Smooth brome grass AUM	Soybeans Bu
83B	Kenyon loam, 2 to 5 percent slopes	42.09	29.0%		Ile	90	84							
399	Readlyn silt loam, 1 to 3 percent slopes	26.17	18.1%		Iw	91								
84	Clyde clay loam, 0 to 3 percent slopes	23.26	16.1%		Ilw	88	74							
198B	Floyd loam, 1 to 4 percent slopes	17.43	12.1%		Ilw	89	74							
471B	Oran loam, 2 to 5 percent slopes	15.10	10.4%		Iw	74	79							
83C2	Kenyon loam, 5 to 9 percent slopes, eroded	9.19	6.4%		Ille	84	67	10.6	6.3	212	3.7	88	6.2	61

Soils data provided by USDA and NRCS.

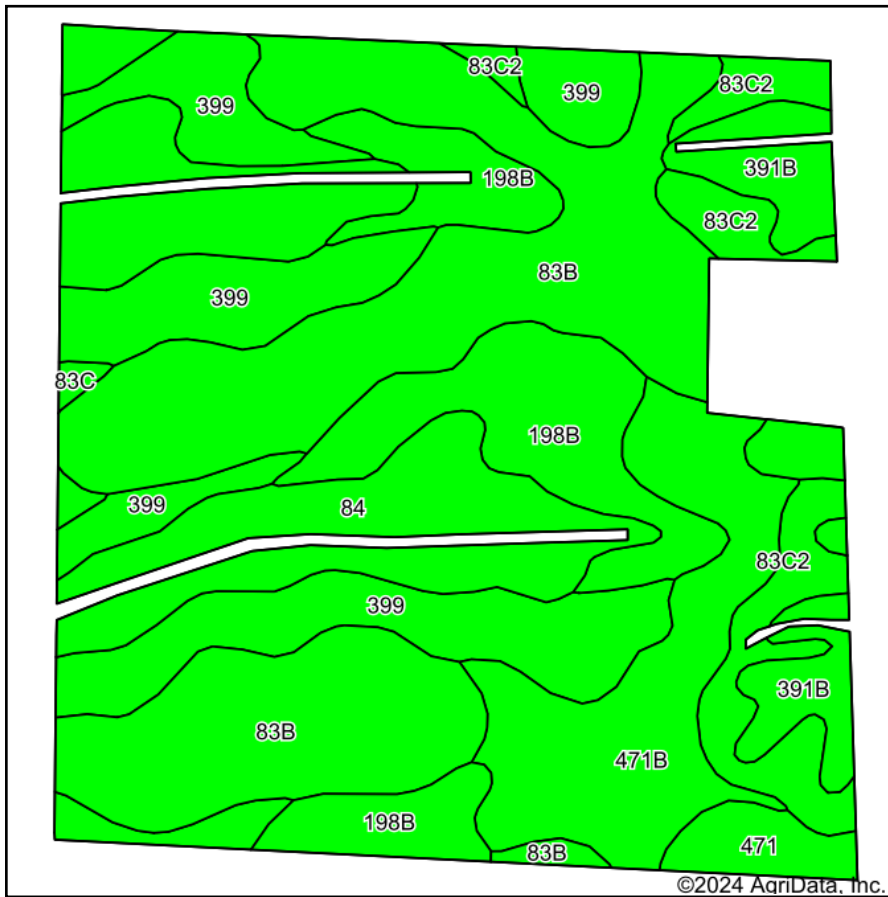
Code	Soil Description	Acres	Percent of field	CSR2 Legend	Non-Irr Class *c	CSR2**	CSR	Bromegrass alfalfa AUM	Bromegrass alfalfa hay Tons	Corn Bu	Kentucky bluegrass AUM	Oats Bu	Smooth bromegrass AUM	Soybeans Bu
391B	Clyde-Floyd complex, 1 to 4 percent slopes	8.13	5.6%		Ilw	87	72							
471	Oran loam, 0 to 2 percent slopes	2.56	1.8%		lw	79	84							
83C	Kenyon loam, 5 to 9 percent slopes	0.68	0.5%		Ille	85	69	10.6	6.4	188	3.7	90.5	6.2	48.5
Weighted Average					1.77	87.3	*-	0.7	0.4	14.4	0.3	6	0.4	4.1

**IA has updated the CSR values for each county to CSR2.

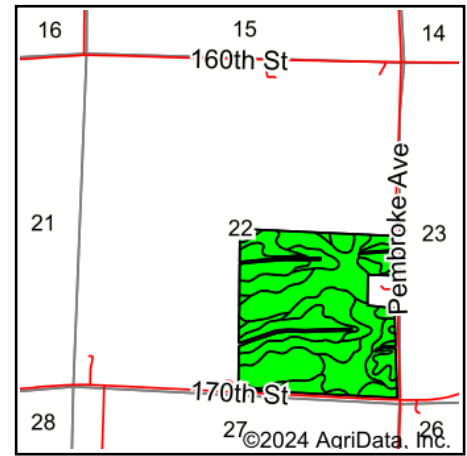
*- CSR weighted average cannot be calculated on the current soils data, use prior data version for csr values.

*c: Using Capabilities Class Dominant Condition Aggregation Method

Soils Map



Soils data provided by USDA and NRCS.



State: **Iowa**
 County: **Chickasaw**
 Location: **22-96N-12W**
 Township: **Jacksonville**
 Acres: **141.51**
 Date: **8/8/2024**



Maps Provided By:



Area Symbol: IA037, Soil Area Version: 29

Code	Soil Description	Acres	Percent of field	CSR2 Legend	Non-Irr Class *c	CSR2**	CSR	Bromegrass alfalfa AUM	Bromegrass alfalfa hay Tons	Corn Bu	Kentucky bluegrass AUM	Oats Bu	Smooth bromegrass AUM	Soybeans Bu
83B	Kenyon loam, 2 to 5 percent slopes	42.08	29.7%		Ile	90	84							
399	Readlyn silt loam, 1 to 3 percent slopes	26.17	18.5%		Iw	91								
84	Clyde clay loam, 0 to 3 percent slopes	20.80	14.7%		Ilw	88	74							
198B	Floyd loam, 1 to 4 percent slopes	17.29	12.2%		Ilw	89	74							
471B	Oran loam, 2 to 5 percent slopes	15.10	10.7%		Iw	74	79							
83C2	Kenyon loam, 5 to 9 percent slopes, eroded	9.14	6.5%		Ille	84	67	10.6	6.3	212	3.7	88	6.2	61

Soils data provided by USDA and NRCS.

Code	Soil Description	Acres	Percent of field	CSR2 Legend	Non-Irr Class *c	CSR2**	CSR	Bromegrass alfalfa AUM	Bromegrass alfalfa hay Tons	Corn Bu	Kentucky bluegrass AUM	Oats Bu	Smooth bromegrass AUM	Soybeans Bu
391B	Clyde-Floyd complex, 1 to 4 percent slopes	7.69	5.4%		Ilw	87	72							
471	Oran loam, 0 to 2 percent slopes	2.56	1.8%		lw	79	84							
83C	Kenyon loam, 5 to 9 percent slopes	0.68	0.5%		Ille	85	69	10.6	6.4	188	3.7	90.5	6.2	48.5
Weighted Average					1.76	87.3	*-	0.7	0.4	14.6	0.3	6.1	0.4	4.2

**IA has updated the CSR values for each county to CSR2.

*- CSR weighted average cannot be calculated on the current soils data, use prior data version for csr values.

*c: Using Capabilities Class Dominant Condition Aggregation Method