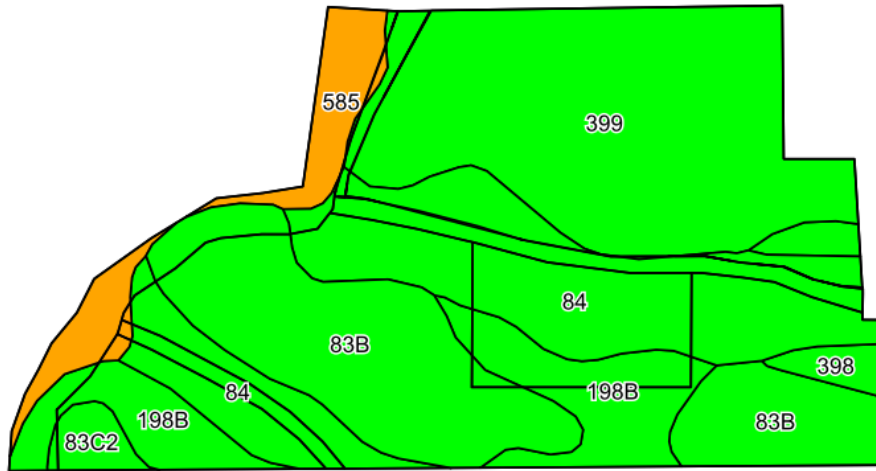
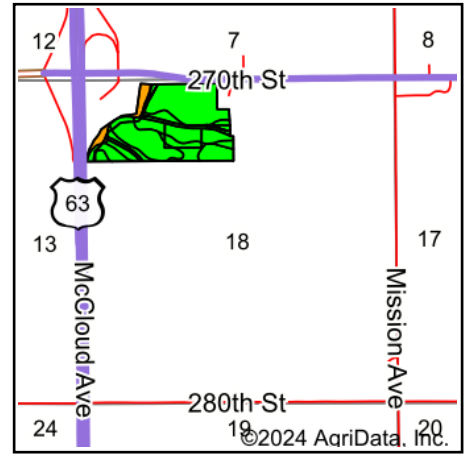


Soils Map



©2024 AgriData, Inc.

Soils data provided by USDA and NRCS.



State: **Iowa**
 County: **Chickasaw**
 Location: **18-94N-12W**
 Township: **Dresden**
 Acres: **53.48**
 Date: **8/8/2024**



Maps Provided By:



© AgriData, Inc. 2023

www.AgriDataInc.com



Area Symbol: IA037, Soil Area Version: 29

Code	Soil Description	Acres	Percent of field	CSR2 Legend	Non-Irr Class *c	CSR2**	CSR	Bromegrass alfalfa AUM	Bromegrass alfalfa hay Tons	Corn Bu	Kentucky bluegrass AUM	Oats Bu	Smooth bromegrass AUM	Soybeans Bu
399	Readlyn silt loam, 1 to 3 percent slopes	16.19	30.3%		lw	91								
84	Clyde clay loam, 0 to 3 percent slopes	13.94	26.1%		llw	88	74							
83B	Kenyon loam, 2 to 5 percent slopes	12.27	22.9%		lle	90	84							
198B	Floyd loam, 1 to 4 percent slopes	5.84	10.9%		llw	89	74							
585	Coland-Spillville complex, 0 to 2 percent slopes, occasionally flooded	3.20	6.0%		llw	70	85							
398	Tripoli clay loam, 0 to 2 percent slopes	1.19	2.2%		llw	82	79							

Soils data provided by USDA and NRCS.

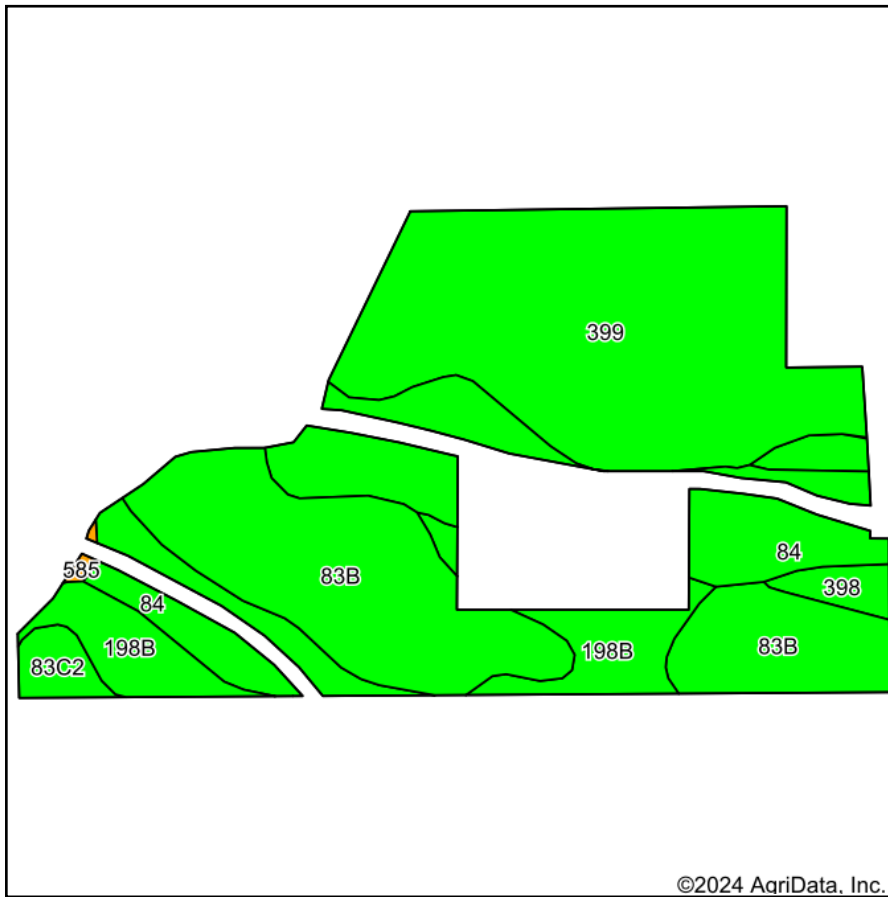
Code	Soil Description	Acres	Percent of field	CSR2 Legend	Non-Irr Class *c	CSR2**	CSR	Bromegrass alfalfa AUM	Bromegrass alfalfa hay Tons	Corn Bu	Kentucky bluegrass AUM	Oats Bu	Smooth bromegrass AUM	Soybeans Bu
83C2	Kenyon loam, 5 to 9 percent slopes, eroded	0.85	1.6%		IIIe	84	67	10.6	6.3	212	3.7	88	6.2	61
Weighted Average					1.71	88.2	*-	0.2	0.1	3.4	0.1	1.4	0.1	1

**IA has updated the CSR values for each county to CSR2.

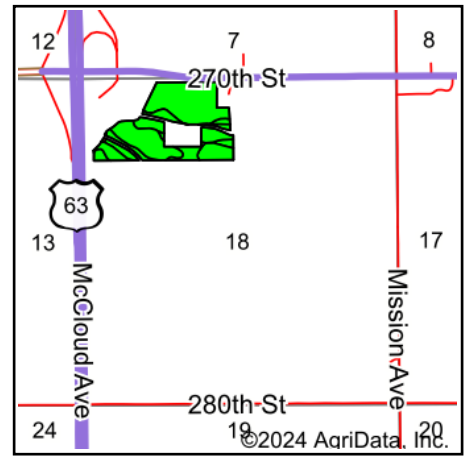
*- CSR weighted average cannot be calculated on the current soils data, use prior data version for csr values.

*c: Using Capabilities Class Dominant Condition Aggregation Method

Soils Map



Soils data provided by USDA and NRCS.



State: **Iowa**
 County: **Chickasaw**
 Location: **18-94N-12W**
 Township: **Dresden**
 Acres: **41.09**
 Date: **8/8/2024**



Maps Provided By:



Area Symbol: IA037, Soil Area Version: 29

Code	Soil Description	Acres	Percent of field	CSR2 Legend	Non-Irr Class *c	CSR2**	CSR	Bromegrass alfalfa AUM	Bromegrass alfalfa hay Tons	Corn Bu	Kentucky bluegrass AUM	Oats Bu	Smooth bromegrass AUM	Soybeans Bu
399	Readlyn silt loam, 1 to 3 percent slopes	15.65	38.1%		Iw	91								
83B	Kenyon loam, 2 to 5 percent slopes	11.32	27.5%		Ile	90	84							
84	Clyde clay loam, 0 to 3 percent slopes	8.28	20.2%		Ilw	88	74							
198B	Floyd loam, 1 to 4 percent slopes	3.76	9.2%		Ilw	89	74							
398	Tripoli clay loam, 0 to 2 percent slopes	1.19	2.9%		Ilw	82	79							
83C2	Kenyon loam, 5 to 9 percent slopes, eroded	0.79	1.9%		Ille	84	67	10.6	6.3	212	3.7	88	6.2	61

Soils data provided by USDA and NRCS.



Code	Soil Description	Acres	Percent of field	CSR2 Legend	Non-Irr Class *c	CSR2**	CSR	Bromegrass alfalfa AUM	Bromegrass alfalfa hay Tons	Corn Bu	Kentucky bluegrass AUM	Oats Bu	Smooth bromegrass AUM	Soybeans Bu
585	Coland-Spillville complex, 0 to 2 percent slopes, occasionally flooded	0.10	0.2%		Ilw	70	85							
Weighted Average					1.64	89.5	*-	0.2	0.1	4.1	0.1	1.7	0.1	1.2

**IA has updated the CSR values for each county to CSR2.
*- CSR weighted average cannot be calculated on the current soils data, use prior data version for csr values.
*c: Using Capabilities Class Dominant Condition Aggregation Method