



HAVERKOST ESTATE FARM EQUIPMENT AUCTION

LIVE! 22905 COUNTY ROAD 453
BOVEY, MN 55709

ABSENTEE: MON, JUNE 16 | 8 AM ^{CDT 2025}
LIVE: THURS, JUNE 19 | 11 AM
WEBCAST: THURS, JUNE 19 | 11 AM

AUCTIONEER'S NOTE: With the passing of Joe Haverkost, Wanda has decided to sell the remaining farm and construction equipment, along with the real estate, and Steffes Group is honored to be part of this sale. All equipment has been well maintained, stored indoors, and is in excellent condition. This live auction will offer online bidding, with the real estate selling first at 10 AM, followed by the equipment at 11 AM.



2013 NEW HOLLAND T6070 PLUS

PREVIEW: June 14, 1 PM – 4 PM & June 17, 10 AM – 4 PM.
LOADOUT: Day of sale & June 20, 9 AM – 4 PM.

**REAL ESTATE
AUCTION INFO** →



NEW HOLLAND POWERSTAR 75



1976 INTERNATIONAL 1466



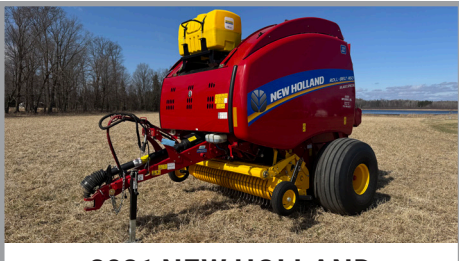
1970 INTERNATIONAL 826



1955 FARMALL 300



1973 INTERNATIONAL 715



2021 NEW HOLLAND
ROLL-BELT 460



2017 NEW HOLLAND
DISCBINE 313



BRILLION SURE-STAND SSB12



1971 JOHN DEERE 450-B



1984 INTERNATIONAL S1954



1993 INTERNATIONAL 8100



2003 CHEVROLET
SILVERADO 2500HD LS



KRONE KW 5.52-4X7T



2015 PJ



2018 NEO MFG



AQUA-THERM ECO-ONE

FOR INFO
CONTACT

WAYNE ROBERTS
(218) 969-9401

OR

STEFFES REPRESENTATIVE
MATT ANDERSON
(612) 500-3693



**SEE MORE
EQUIPMENT
DETAILS ONLINE!**



Steffes Group, Inc. | (320) 693-9371
23579 MN Hwy 22 S, Litchfield, MN 55355

All items sold as is where is. Payment of cash, check, or credit card must be made sale day before removal of items. Statements made auction day take precedence over all advertising. Additional fees may apply. Titles will be mailed. Canadian buyers need a bank letter of credit to facilitate border transfer. Scott Steffes MN14-51.



FINANCING BUILT AROUND YOU.

Let us help you secure the funding you need to thrive in today's competitive market. Scan the QR code for more info.



Financed By Northland Capital

MN REAL ESTATE & EQUIPMENT AUCTION

22905 COUNTY ROAD 453 BOVEY, MN 55709

LIVE!



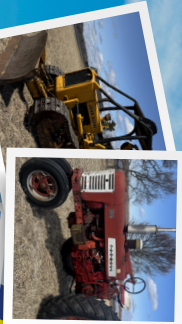
REAL ESTATE: JUNE 19 | 10 AM

EQUIPMENT: JUNE 19 | 11 AM

CDT 2025

SteffesGroup.com | (320) 693-9371

Steffes Group, Inc., 23579 MN Hwy 22 S, Litchfield, MN 55355



Steffes Group, Inc.
2000 Main Ave E
West Fargo, ND 58078
Address Service Requested



PRESORTED
STANDARD
US POSTAGE
PAID
Permit #315
FARGO, ND

LIVE!

22905 COUNTY ROAD 453 BOVEY, MN 55709

ITASCA COUNTY, MN HOBBY FARM & LAND AUCTION

This 129.6± acre hobby farm presents an opportunity for farmers, investors, and outdoor enthusiasts alike. Featuring a combination of farmland, woods and well-maintained farm structures, these parcels are ideal for both agricultural use and rural living. Whether you are looking to expand your farming operation or enjoy a peaceful country retreat, this land offers endless possibilities. Join us live on-site at 10:00 AM CDT for the real estate auction, followed by the farm and construction equipment sale at 11:00 AM CDT. Online bidding will also be available for both auctions, ensuring everyone has a chance to participate.

Total Acres: 129.6±
PID #: 40-028-4300, 40-028-4200 & 40-033-1200
To Be Sold in 3 Tracts!
Preview: May 29 | 3 - 5 PM & June 12 | 11 AM - 2 PM
Auction Starts: June 19 | 10 AM

FOR INFO CONTACT

STEFFES REP. ERIC GABRIELSON (701) 238-2570
STEFFES REP. MATT ANDERSON (612) 500-3693



TRACT 1 - 37± ACRES

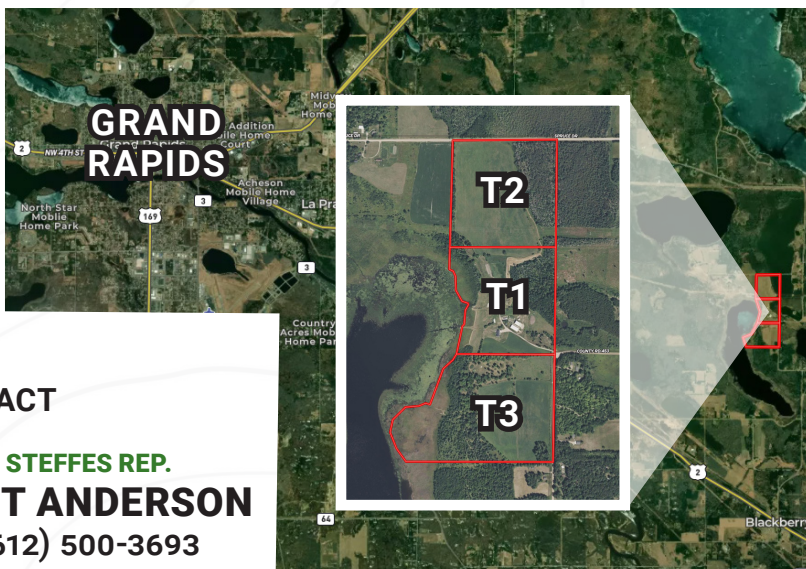


TRACT 2 - 38.6± ACRES



TRACT 3 - 54± ACRES

**EQUIPMENT
AUCTION INFO**



Steffes Group, Inc. | SteffesGroup.com

(320) 693-9371 | 23579 MN Hwy 22 S, Litchfield, MN 55355

TERMS: Ten percent upon signing purchase agreement, payable by cash or check. Balance due at closing within 30 days. This is a 5% buyer's premium auction.

Ashley Huhn MN47-002, Eric Gabrielson MN47-006, Randy Kath MN47-007, Scott Steffes MN14-51

