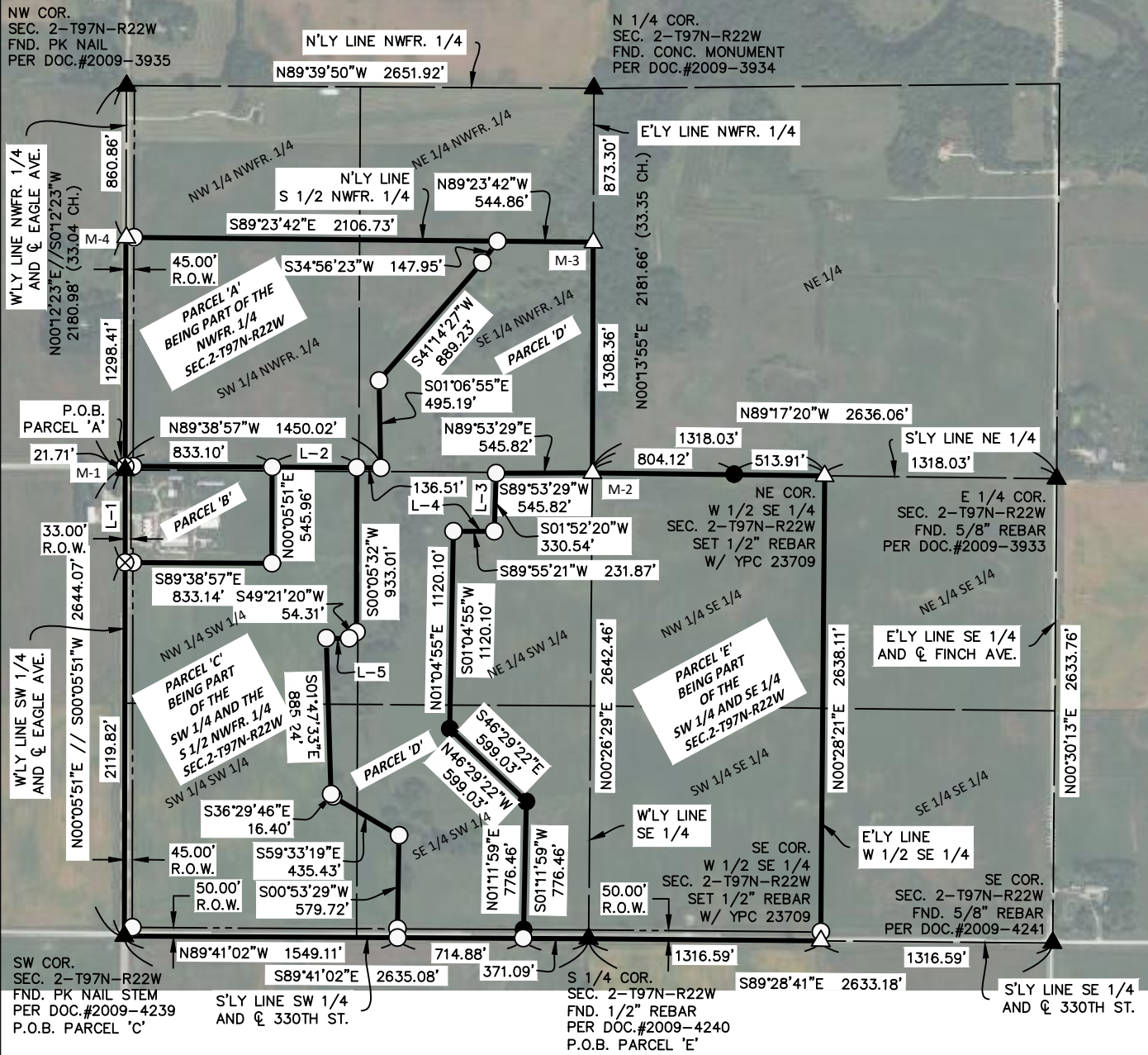


PLAT OF SURVEY



MONUMENT TABLE	
NAME	DESCRIPTION
M-1	W 1/4 COR. SEC. 2-T97N-R22W FND. PK NAIL STEM PER DOC.#2009-3936 P.O.C. PARCEL 'A' P.O.B. PARCEL 'B'
M-2	CENTER SEC. 2-T97N-R22W SET MAG NAIL TOP FENCE COR. PER DOC.#932255 P.O.B. PARCEL 'D'
M-3	NE COR. S 1/2 NWFR. 1/4 SEC. 2-T97N-R22W SET 1/2" REBAR W/ YPC 23709
M-4	NW COR. S 1/2 NWFR. 1/4 SEC. 2-T97N-R22W SET MAG NAIL

LINE TABLE		
L-#	BEARING	LENGTH
L-1	S 00°05'51" W	524.25'
L-2	S 89°38'57" E	480.41'
L-3	N 01°52'20" E	330.54'
L-4	N 89°55'21" E	231.87'
L-5	N 89°50'23" W	130.08'

PARCEL 'D' AREA CALCULATIONS	
TOTAL AREA	74.08 AC.
- R.O.W. AREA	0.83 AC.
NET AREA	73.25 AC.
NW 1/4 SW 1/4 AREA	1.74 AC.
SW 1/4 SW 1/4 AREA	2.02 AC.
SE 1/4 SW 1/4 AREA	22.08 AC.
- R.O.W. AREA	0.83 AC.
NET AREA	21.25 AC.
NE 1/4 SW 1/4 AREA	18.03 AC.
SW 1/4 NWFR. 1/4 AREA	0.01 AC.
SE 1/4 NWFR. 1/4 AREA	30.20 AC.

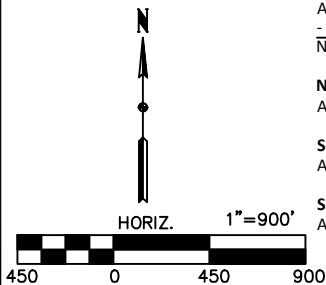
PARCEL 'A' AREA CALCULATIONS	
TOTAL AREA	49.12 AC.
- R.O.W. AREA	1.34 AC.
NET AREA	47.78 AC.
SE 1/4 NWFR. 1/4 AREA	9.70 AC.
SW 1/4 NWFR. 1/4 AREA	39.42 AC.
- R.O.W. AREA	1.34 AC.
NET AREA	38.08 AC.

PARCEL 'B' AREA CALCULATIONS	
TOTAL AREA	10.44 AC.
- R.O.W. AREA	0.44 AC.
NET AREA	10.00 AC.
SW 1/4 NWFR. 1/4 AREA	0.42 AC.
- R.O.W. AREA	0.02 AC.
NET AREA	0.40 AC.
NW 1/4 SW 1/4 AREA	10.02 AC.
- R.O.W. AREA	0.42 AC.
NET AREA	9.60 AC.

PARCEL 'C' AREA CALCULATIONS	
TOTAL AREA	70.16 AC.
- R.O.W. AREA	3.92 AC.
NET AREA	66.24 AC.
NW 1/4 SW 1/4 AREA	28.40 AC.
- R.O.W. AREA	0.82 AC.
NET AREA	27.58 AC.
SW 1/4 SW 1/4 AREA	38.02 AC.
- R.O.W. AREA	2.83 AC.
NET AREA	35.19 AC.
SE 1/4 SW 1/4 AREA	3.50 AC.
- R.O.W. AREA	0.27 AC.
NET AREA	3.23 AC.
SW 1/4 NWFR. 1/4 AREA	0.24 AC.

PARCEL 'E' AREA CALCULATIONS	
TOTAL AREA	116.41 AC.
- R.O.W. AREA	1.94 AC.
NET AREA	114.47 AC.
NW 1/4 SE 1/4 AREA	39.93 AC.
NE 1/4 SW 1/4 AREA	22.12 AC.
SE 1/4 SW 1/4 AREA	14.45 AC.
- R.O.W. AREA	0.43 AC.
NET AREA	14.02 AC.
SW 1/4 SE 1/4 AREA	39.91 AC.
- R.O.W. AREA	1.51 AC.
NET AREA	38.40 AC.

- SURVEYOR'S NOTES:**
- 1) IGRCS ZONE 2 IS THE BASIS OF BEARING FOR THE PURPOSE OF THIS SURVEY.
 - 2) THE S'LY LINE OF THE NWFR. 1/4 HAS A BEARING OF N89°38'57"W.



LEGEND

- △ SET SECTION CORNER AS NOTED (P.O.C.) POINT OF COMMENCEMENT
- SET 1/2" REBAR 24" LONG YPC 23709 (P.O.B.) POINT OF BEGINNING
- FOUND 5/8" REBAR W/ YPC 8656 MONUMENT UNLESS NOTED
- ▲ FOUND SECTION CORNER AS NOTED (0.00') RECORD MEASUREMENT
- ⊗ SET MAG NAIL
- Ⓟ FOUND 5/8" REBAR W/ BPC 24510
- Ⓟ LOT NUMBER

DATE SURVEYED	10-3-24
SCALE:	AS SHOWN
PROJECT NO.:	24304
DRAWN BY:	BVS
CHECKED BY:	BVS
SHEET	3 of 3

STARK SURVEYING INC.