

Dale & Susan Karn Charitable Trust Retirement

AUCTION

TIMED ONLINE

OPENS: Monday, August 5 📍 9350 21st St SE, Wimbledon, ND 58492

CLOSES: Monday, August 12 | 12PM ^{CDT} 2024

AUCTIONEER'S NOTE: After 48 years of farming, Dale & Sue are retiring. Auction will include Tractors, Combines, Planter, Air Seeder, Self-Propelled Sprayer, Heads, Grain Handling Equipment, Tillage, Trucks, Trailers & more! Major pieces are shedded.

PREVIEW: By appointment only from Monday, July 29 – Monday, August 12 weekdays. Contact Dale, 701.320.1783

LOADOUT: Monday, August 12 – Monday, August 19 weekdays from 8AM - 5PM. No weekend loadout is available.



2003
John Deere 9520



2008
Miller Condor A75



2001
John Deere 9750 STS



1992
John Deere 9600



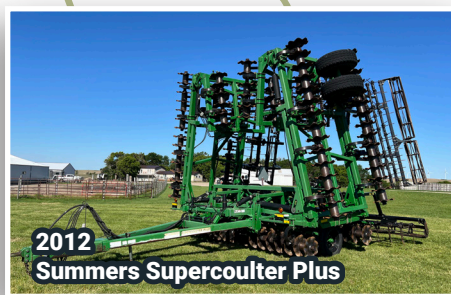
2002
John Deere 8420T



2004
John Deere 1820



1997
John Deere 1760



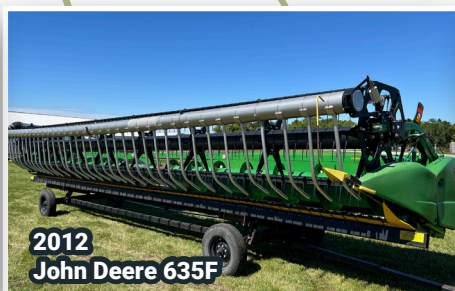
2012
Summers Supercoultter Plus



1997
CAT Challenger 85D



2006
Summers Super Roller



2012
John Deere 635F



2005
International 9200i



1990
John Deere 4455



1990
White GMC



2007
Timpte Super Hopper



Mobility 800 Row Crop



1974
John Deere 4430



Scan For
Auction
Details!

DALE & SUSAN KARN CHARITABLE TRUST | Dale, 701.320.1783
For information contact Norm Martineau at Steffes Group, 701.237.9173 or 701.970.0045

Browse More Items and Details Available Online!



SteffesGroup.com | 701.237.9173

Steffes Group, Inc., 2000 Main Avenue E, West Fargo, ND 58078

All items sold as is where is. Payment of cash, check, or credit card must be made sale day before removal of items. Statements made auction day take precedence over all advertising. Additional fees may apply. Titles will be mailed. Canadian buyers need a bank letter of credit to facilitate border transfer. Scott Steffes ND81

