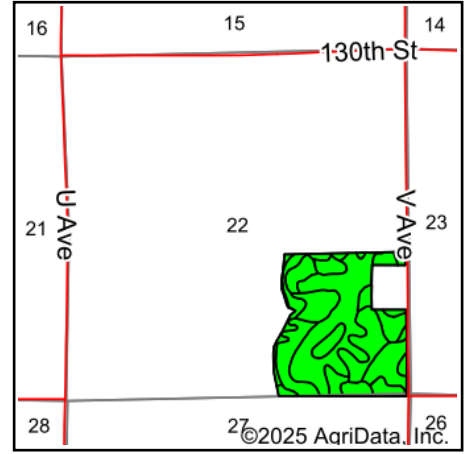
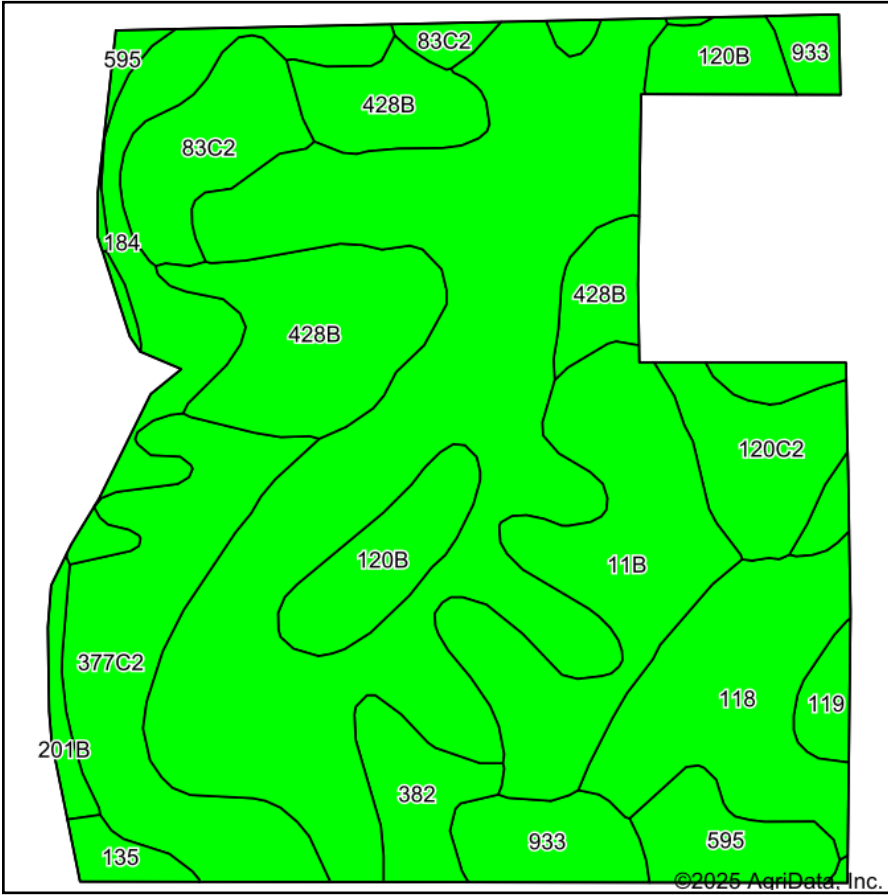


# Soils Map



State: **Iowa**  
 County: **Hardin**  
 Location: **22-89N-19W**  
 Township: **Etna**  
 Acres: **89.01**  
 Date: **8/19/2025**



Maps Provided By:  
  
 CUSTOMIZED ONLINE MAPPING  
 © AgriData, Inc. 2023 [www.AgriDataInc.com](http://www.AgriDataInc.com)



Soils data provided by USDA and NRCS.

Area Symbol: IA083, Soil Area Version: 31

Code	Soil Description	Acres	Percent of field	CSR2 Legend	Non-Irr Class *c	CSR2**	CSR	Bromegrass alfalfa AUM	Bromegrass alfalfa hay Tons	Corn Bu	Kentucky bluegrass AUM	Oats Bu	Smooth bromegrass AUM	Soybeans Bu
120C2	Tama silty clay loam, 5 to 9 percent slopes, eroded	31.24	35.0%		Ille	87	78							
428B	Ely silty clay loam, 2 to 5 percent slopes	9.27	10.4%		Ile	88	88							
11B	Colo-Ely complex, 0 to 5 percent slopes	8.90	10.0%		Ilw	86	70							
377C2	Dinsdale silty clay loam, 5 to 9 percent slopes, eroded	8.18	9.2%		Ille	85	73							
118	Garwin silty clay loam, 0 to 2 percent slopes	6.97	7.8%		Ilw	90	95							
120B	Tama silty clay loam, 2 to 5 percent slopes	4.88	5.5%		Ile	95	95							

Soils data provided by USDA and NRCS.



Code	Soil Description	Acres	Percent of field	CSR2 Legend	Non-Irr Class *c	CSR2**	CSR	Bromegrass alfalfa AUM	Bromegrass alfalfa hay Tons	Corn Bu	Kentucky bluegrass AUM	Oats Bu	Smooth bromegrass AUM	Soybeans Bu	
184	Klinger silty clay loam, 1 to 4 percent slopes	4.75	5.3%		lw	95	95								
83C2	Kenyon loam, 5 to 9 percent slopes, eroded	3.90	4.4%		llle	84	68	10.6	6.3	212	3.7	88	6.2	61	
933	Sawmill silty clay loam, shallow loess, 0 to 2 percent slopes, occasionally flooded	3.01	3.4%		llw	78	80								
595	Harpster silty clay loam, 0 to 2 percent slopes	2.66	3.0%		llw	77	85								
382	Maxfield silty clay loam, 0 to 2 percent slopes	2.29	2.6%		llw	87	90								
119	Muscatine silty clay loam, 0 to 2 percent slopes	1.33	1.5%		lw	100	100								
201B	Coland-Terril complex, 2 to 5 percent slopes	0.87	1.0%		llw	80	69								
135	Coland clay loam, 0 to 2 percent slopes, occasionally flooded	0.76	0.9%		llw	76	80								
<b>Weighted Average</b>						<b>2.42</b>	<b>87.2</b>	<b>81.4</b>	<b>0.5</b>	<b>0.3</b>	<b>9.3</b>	<b>0.2</b>	<b>3.9</b>	<b>0.3</b>	<b>2.7</b>

\*\*IA has updated the CSR values for each county to CSR2.

\*c: Using Capabilities Class Dominant Condition Aggregation Method