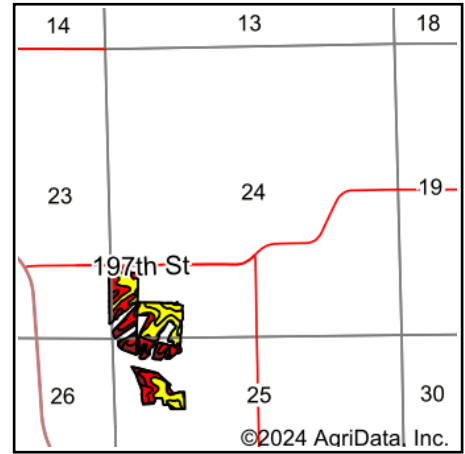
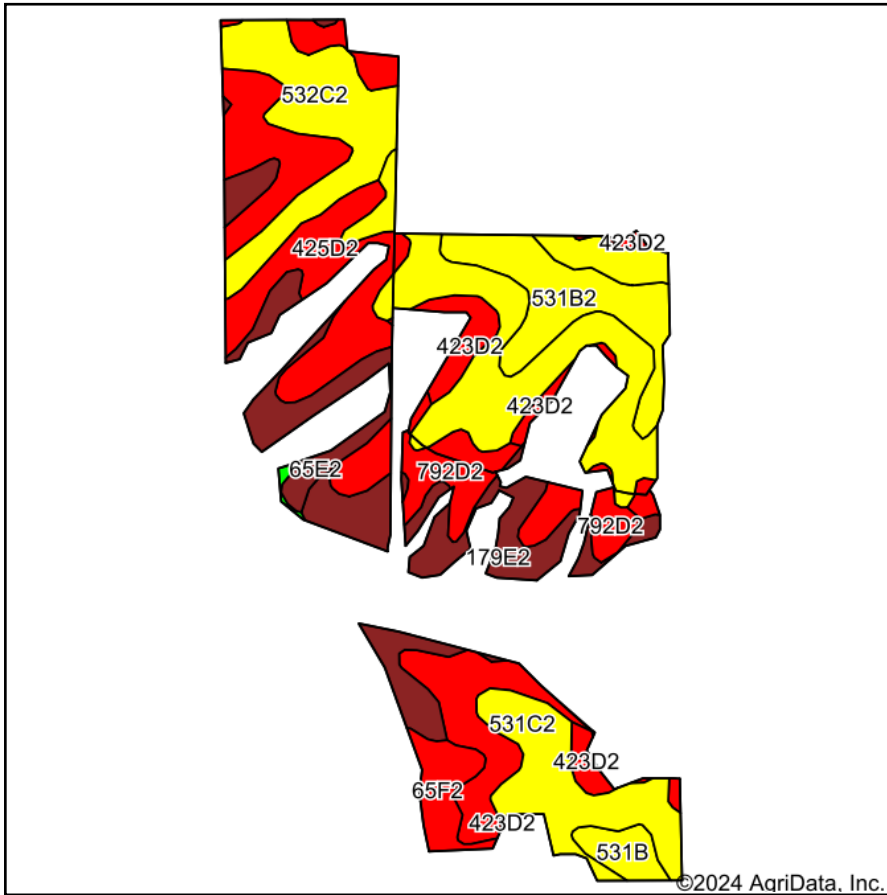


Soils Map



State: **Iowa**
 County: **Van Buren**
 Location: **24-69N-11W**
 Township: **Chequest**
 Acres: **37.21**
 Date: **5/24/2024**



Maps Provided By:
surety
 CUSTOMIZED ONLINE MAPPING
 © AgriData, Inc. 2023 www.AgriDataInc.com



Soils data provided by USDA and NRCS.

Area Symbol: IA177, Soil Area Version: 31

Code	Soil Description	Acres	Percent of field	CSR2 Legend	Non-Irr Class *c	CSR2**	CSR	
531C2	Kniffin silty clay loam, 5 to 9 percent slopes, moderately eroded	9.45	25.4%		IIIe	48	31	
425D2	Keswick clay loam, 9 to 14 percent slopes, moderately eroded	5.97	16.0%		IVe	8	12	
792D2	Armstrong clay loam, 9 to 14 percent slopes, moderately eroded	5.17	13.9%		IVe	7	13	
532C2	Rathbun silty clay loam, 5 to 9 percent slopes, moderately eroded	3.86	10.4%		IIIe	44	28	
179E2	Gara clay loam, 14 to 18 percent slopes, moderately eroded	3.82	10.3%		VIe	23	33	
531B2	Kniffin silty clay loam, 2 to 5 percent slopes, moderately eroded	3.02	8.1%		IIIe	54	51	
65E2	Lindley loam, 14 to 18 percent slopes, moderately eroded	2.38	6.4%		VIe	29	28	
423D2	Bucknell silty clay loam, 9 to 14 percent slopes, moderately eroded	1.65	4.4%		IVe	6	13	
65F2	Lindley loam, 18 to 25 percent slopes, moderately eroded	1.09	2.9%		VIIe	10	8	
531B	Kniffin silt loam, 2 to 5 percent slopes	0.73	2.0%		IIIe	55	54	
730B	Nodaway-Coppock-Cantril complex, 2 to 5 percent slopes	0.07	0.2%		IIw	74	61	
Weighted Average						3.96	29.4	25.8

**IA has updated the CSR values for each county to CSR2.

*c: Using Capabilities Class Dominant Condition Aggregation Method