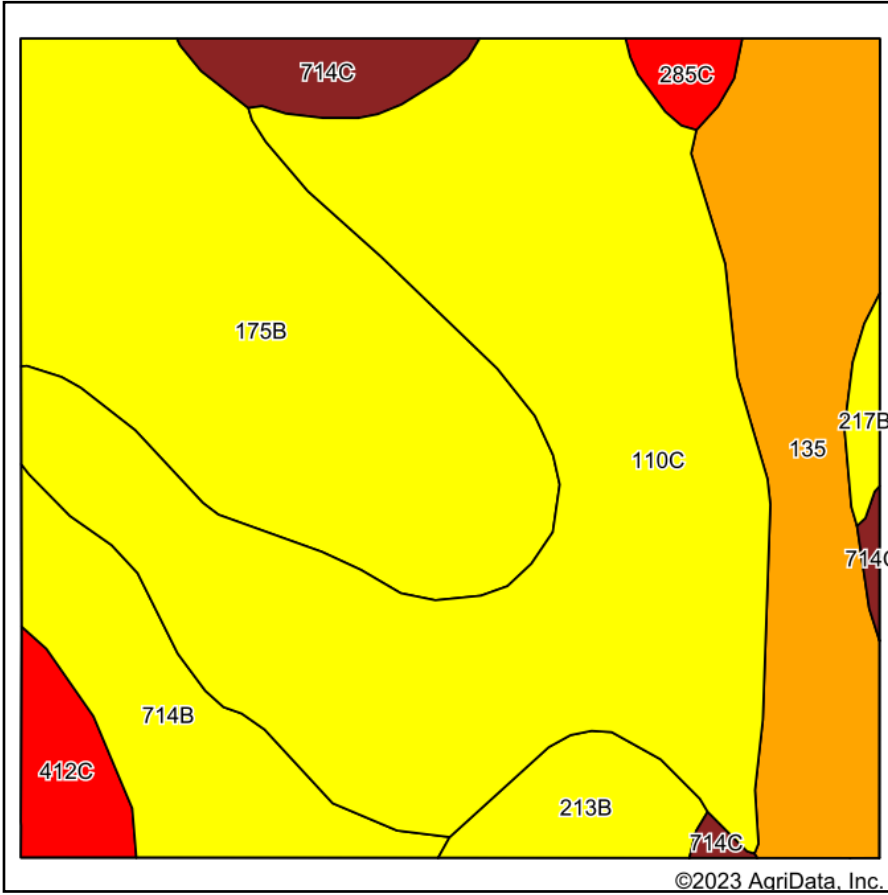
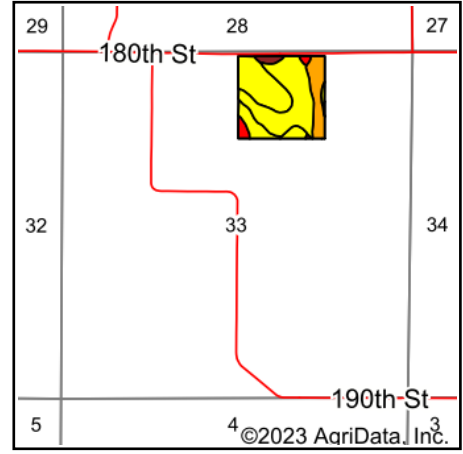


# Soils Map



Soils data provided by USDA and NRCS.



State: **Iowa**  
 County: **Floyd**  
 Location: **33-96N-18W**  
 Township: **Rockford**  
 Acres: **38.14**  
 Date: **11/28/2023**



Maps Provided By:  
  
 CUSTOMIZED ONLINE MAPPING  
 © AgriData, Inc. 2023 [www.AgriDataInc.com](http://www.AgriDataInc.com)



Area Symbol: IA067, Soil Area Version: 29

Code	Soil Description	Acres	Percent of field	CSR2 Legend	Non-Irr Class *c	Irr Class *c	CSR2**	CSR	
110C	Lamont fine sandy loam, 5 to 9 percent slopes	15.87	41.6%			IIIe	47	32	
175B	Dickinson fine sandy loam, 2 to 5 percent slopes	9.63	25.2%			IIIe	50	55	
135	Coland clay loam, 0 to 2 percent slopes, occasionally flooded	5.61	14.7%			IIw	65	80	
714B	Winneshiek silt loam, 20 to 30 inches to limestone, till plain, 2 to 5 percent slopes	3.00	7.9%			Ile	42	53	
213B	Rockton loam, 30 to 40 inches to limestone, till plain, 2 to 5 percent slopes	1.24	3.3%			Ile	49	74	
714C	Winneshiek silt loam, 20 to 30 inches to limestone, till plain, 5 to 9 percent slopes	1.14	3.0%			IIIe	37	33	
412C	Emeline loam, 2 to 9 percent slopes	0.95	2.5%			IVs	7	13	
285C	Burkhardt sandy loam, 5 to 9 percent slopes	0.39	1.0%			IIIs	IIIe	13	5
217B	Ripon silt loam, 30 to 40 inches to limestone, 1 to 5 percent slopes	0.31	0.8%			Ile	58	79	
<b>Weighted Average</b>						<b>2.76</b>	<b>*-</b>	<b>48.5</b>	<b>47.5</b>

\*\*IA has updated the CSR values for each county to CSR2.

\*c: Using Capabilities Class Dominant Condition Aggregation Method

\*- Irr Class weighted average cannot be calculated on the current soils data due to missing data.

Soils data provided by USDA and NRCS.