

MIDWEST MACHINERY COMPANY

AUCTION

TIMED ONLINE

Opens: Monday, November 20

CLOSES: MONDAY, NOVEMBER 27 | 12PM CST 2023

Auctioneer's Note:

Midwest Machinery Co. is selling large, late-model MFWD Tractors, Combines, Self-Propelled Sprayers, Flex Drapers, Corn Heads, Grain Carts, and More!

RC Christianson & Craig Krysan.
320.365.1638

OR CONTACT STEFFES GROUP REPRESENTATIVES
**BRAD OLSTAD, 701.238.0240 OR
TADD SKAURUD, 701.729.3644**



2022 JOHN DEERE 8R 370



2021 JOHN DEERE 8R 340



2021 JOHN DEERE 8R 310



2022 JOHN DEERE 8R 280



2022 JOHN DEERE 8R 250



2022 JOHN DEERE 6155R



2021 JOHN DEERE 6120M



2018 JOHN DEERE S790



2017 JOHN DEERE S690



2017 JOHN DEERE S690



2015 JOHN DEERE S690



2013 JOHN DEERE S680



2012 JOHN DEERE S680

MFWD TRACTORS

2022 John Deere 8R 370, 641 hrs., 40K IVT, LH reverser, ILS, Signature Series cab w/susp., active seat, buddy seat, heated/cooled leather, CommandPro joystick, 6 hyd., (1) 1/2" aux. hyd. coupler, 84 gpm hyd. pump, return flow, 3 pt., quick hitch, 1000 PTO, integrated auto steer, 4600 processor, 10" color display, AutoTrac, AutoPath, Section Control, RowSense, Machine Sync, AutoTrac Turn automation, Implement Guidance, In-Field Data Sharing, Tractor Implement Automation & Data Sync activations, Cat 4 HD drawbar, cold weather start pkg., Ultimate comfort cab & visibility pkg., diff lock, foot throttle, refrigerator, 6-way power mirrors, dual beam radar, rear fender controls, front fenders, (22) front suitcase weights, 380/80R38 front duals, 380/90R54 rear duals, basic warranty until March 11, 2024 or 2,000 hrs., S/N 1RW8370DPNC201221; Location: 516 1st St E, Madison, MN 56256

2021 John Deere 8R 340, 556 hrs., 40K IVT, ILS w/front brakes, Signature Series cab, active seat, buddy seat, heated/cooled leather, 5 hyd., (1) 1/2" aux. hyd. coupler, 84 gpm hyd. pump, return flow, 3 pt., quick hitch, 1000 PTO, front 3 pt., PTO & 1 hyd., integrated multi-function joystick, integrated auto steer, 4600 processor, 10" color display, AutoTrac, Section Control, RowSense, Machine Sync, Auto Turn Automation, Tractor Implement Automation, Implement Guidance, In-Field Data Sharing & Data Sync activations, integrated SF6000 receiver w/SF1, Cat 4 HD drawbar, cold weather start pkg., Ultimate comfort cab & visibility pkg., diff lock, foot throttle, front & rear cameras, refrigerator, 6-way power mirrors, dual beam radar, front fenders, 380/80R38 front duals, 480/80R50 rear duals, ext. powertrain warranty until November 19, 2024 or 1,500 hrs., S/N 1RW8340DAMC186501; Location: 201 MN-44 #76, Caledonia, MN 55921

2021 John Deere 8R 310, 450 hrs., IVT, ILS, premium cab, active seat, buddy seat, heated/cooled leather, 5 hyd., (1) 1/2" aux. hyd. coupler, 84 gpm hyd. pump, return flow, 3 pt., quick hitch, 1000 PTO, integrated auto steer, 4600 processor, 10" color display, AutoTrac, Section Control, RowSense, Machine Sync, AutoTrac Turn automation, Tractor Implement Automation, In-Field Data Sharing & Data Sync activations, integrated SF6000 receiver w/SF1, Cat 4 HD drawbar, cold weather start pkg., Ultimate comfort cab & visibility pkg., diff lock, foot throttle, front & rear cameras, refrigerator, 6-way power mirrors, dual beam radar, front fenders, 380/85R38 front tires, 480/80R50 rear duals, ext. powertrain warranty until November 19, 2024 or 1,500 hrs., S/N 1RW8310DEMCI86727; Location: 4561 Hwy 212, Glencoe, MN 55336

COMBINES

2018 John Deere S790, 1,135 sep. hrs., 1,578 eng. hrs., STS, PRWD, Contour-Master w/fore & aft, premium cab, buddy seat, leather, premium radio, deluxe controls, ProDrive, 5 spd. feeder house, 10" color touchscreen display, 4600 processor, integrated auto steer, AutoTrac, AutoTrac Turn Automation, RowSense, Section Control, In-Field Data Sharing, Machine Sync & Data Sync activations, Interactive Combine Adjustment, Active Yield, TouchSet, round bar concaves, diff lock, refrigerator, electric mirrors, premium LED lighting, Y&M, camera ready, ext. wear rotor & grain handling pkg., sidehill performance pkg., 28' high cap. unloading auger, PowerCast tailboard, fine cut chopper, power fold hopper ext. w/Maurer tip ups, track ready axle, 710/75R42 duals, 750/65R26 rear tires, S/N 1H0S790SHJ0800105; Location: 505 4th Ave NE, Grand Meadow, MN 55936

2017 John Deere S690, 1,027 sep. hrs., 1,433 eng. hrs., STS, PRWD, Contour-Master w/fore & aft, premium cab, leather, deluxe controls, ProDrive, high torque 5 spd. feeder house, integrated auto steer, 2630 display in armrest, no activations, diff lock, TouchSet, Y&M, Interactive Combine Adjustment, 26' high cap. unloading auger, power fold hopper ext., fine cut chopper, HD adj. rear axle, LED lights, refrigerator, electric mirrors, 650/85R38 duals, 750/65R26 rear tires, S/N 1H0S690SLH0795483; Location: 380 Atlantic Ave, Benson, MN 56215

2017 John Deere S690, 1,733 sep. hrs., 2,105 eng. hrs., STS, PRWD, Contour-Master w/fore & aft, premium cab, leather, deluxe controls, ProDrive, high torque 5 spd. feeder house, integrated auto steer, 2630 display in armrest, no activations, diff lock, TouchSet, Y&M, camera ready, sidehill performance pkg., 26' high cap. unloading auger, power fold hopper ext., PowerCast tailboard, fine cut chopper, HD adj. rear axle, LED lights, electric mirrors, 800/70R38 duals, 750/65R26 rear tires, S/N 1H0S690SCH0795415; Location: 78412 Co Rd 20, Stewart, MN 55385

2022 John Deere 8R 280, 355 hrs., IVT, ILS, premium cab, active seat, buddy seat, heated/cooled leather, 5 hyd., (1) 1/2" aux. hyd. coupler, 84 gpm hyd. pump, return flow, 3 pt., quick hitch, 540/1000 PTO, integrated auto steer, 4600 processor, 10" color display, AutoTrac, Section Control, RowSense, Tractor Implement automation, In-Field Data Sharing & Data Sync activations, Cat 4 HD drawbar, cold weather start pkg., Ultimate comfort cab & visibility pkg., diff lock, foot throttle, refrigerator, 6-way power mirrors, dual beam radar, rear fender controls, front fenders, front weight bracket, 380/80R38 front duals, 480/80R50 rear duals, basic warranty until September 13, 2024 or 2,000 hrs., ext. powertrain warranty until September 13, 2025 or 1,500 hrs., S/N 1RW8280DJNC205846; Location: 4561 Hwy 212, Glencoe, MN 55336

2022 John Deere 8R 250, 750 hrs., IVT, LH reverser, ILS, Signature Series cab w/susp., active seat, buddy seat, CommandPro joystick, 6 hyd., (1) 1/2" aux. hyd. coupler, 84 gpm hyd. pump, return flow, 3 pt., quick hitch, 1000 PTO, integrated auto steer, 4600 processor, 10" color display, AutoTrac, Section Control, RowSense, Machine Sync, Auto Turn automation & Data Sync activations, Intelligent Power Management, Cat 4 HD drawbar, cold weather start pkg., Ultimate comfort cab & visibility pkg., diff lock, foot throttle, refrigerator, 6-way power mirrors, dual beam radar, front fenders, (22) front suitcase weights, 380/85R38 front tires, 380/90R54 rear duals, basic warranty until May 20, 2024 or 2,000 hrs., S/N 1RW8250DHNC201141; Location: 110 2nd St NE, Elbow Lake, MN 56531

2022 John Deere 6155R, 400 hrs., TLS front axle susp. w/brakes, IVT, LH reverser, premium cab, buddy seat, leather, CommandPro joystick, 3 mid-hyd., 4 rear hyd., power beyond, 3 pt., 540/1000 PTO, front 3 pt., PTO & 2 hyd., integrated multi-function joystick, diff lock, RH & LH doors, integrated auto steer, 4600 processor, 8.4" color display, AutoTrac, Data Sync, In-Field Data Sharing, RowSense & Section Control activations, LED lights, cold weather start pkg., accelerator pedal, refrigerator, panoramic roof, front fenders, rear fender controls, wide coverage rear fenders, inside rear wheel weights, 420/90R30 front tires, 480/80R46 rear tires, basic warranty until April 21, 2024 or 2,000 hrs., S/N 1L06155RCNR141196; Location: 32980 Northfield Blvd, Northfield, MN 55057

2021 John Deere 6120M, 119 hrs., TLS front axle susp., AutoQuad 24 spd. w/creeper, LH reverser, deluxe suspended cab, buddy seat, 3 mid-hyd., 4 rear hyd., 3 pt., rear 540/1000 PTO, front 3 pt., PTO & 1 hyd., integrated multi-function joystick, auto diff lock, RH & LH doors, integrated auto steer, accelerator pedal, refrigerator, panoramic roof, front fenders, rear fender controls, wide coverage rear fenders, 380/70R24 front tires, 480/70R34 rear tires, extended powertrain warranty until March 27, 2024 or 1,500 hrs., S/N 1L06120MCMK985586; Location: 4561 Hwy 212, Glencoe, MN 55336

Various locations in Minnesota & Wisconsin
Locations are listing in the descriptions of each item.

Scan QR code to see the online listing on your smart phone!



701.237.9173 | SteffesGroup.com
Steffes Group, Inc., 2000 Main Ave E, West Fargo, ND 58078

See more items on the back side!



TERMS: All items sold as is where is. Payment of cash or check must be made sale day before removal of items. Statements made auction day take precedence over all advertising. \$35 documentation fee applies to all titled vehicles. Titles will be mailed. Canadian buyers need a bank letter of credit to facilitate border transfer. Scott Steffes ND81

CHOPPING CORN HEADS

2019 John Deere 718C, 18x22", RowSense, AHH, hyd. deck plates, knife rolls, outer gathering ext., stubble lights, single pt. hookcup, S/N 1H00718CLKC805034;

Location: 110 2nd St NE, Elbow Lake, MN 56531

2013 John Deere 612C, 12x22", AHH, RowSense, hyd. deck plates, knife rolls, outer gathering ext., stubble lights, single pt. hookcup, S/N 1H00612CJDC756104;

Location: 380 Atlantic Ave, Benson, MN 56215

DRAPER HEADS

2020 John Deere 740FD, 40", dual drive, flip-over finger reel, hyd. fore/ aft, AHH in rigid mode, hyd. upper pea auger, poly, single pt. hookups, contour shafts, stubble lights, S/N 1H0740FDKLD810467;

Location: 1710 Franklin St N, Glenwood, MN 56334

2020 John Deere 745FD, 45", dual drive, flip-over finger reel, hyd. fore/ aft, AHH in rigid mode, poly, single pt. hookups, contour shafts, stubble lights, S/N 1H0745FDCL0810372;

Location: 110 2nd St NE, Elbow Lake, MN 56531

2019 John Deere 745FD, 45", dual drive, flip-over finger reel, hyd. fore/ aft, CVS airbar system, AHH, poly, single pt. hookups, contour shafts, stubble lights, S/N 1H0745FDAK0805254;

Location: 516 1st St E, Madison, MN 56256

2017 John Deere 645FD, 45", dual drive, flip-over finger reel, hyd. fore/ aft, AHH, hyd. upper pea auger, poly, single pt. hookups, contour shafts, stubble lights, S/N 1H0645FDLH0795217;

Location: 1035 35th Ave NE, Sauk Rapids, MN 56379

EDIBLE BEAN COMBINE

2018 Pickett Twin Master, pull-type, twin cylinder, 15' 8-bar pickup, 2 spd. trans., hyd. swing hitch, hyd. dump hopper, large 1000 PTO, 30.5L-32 tires, S/N 2018-410;

Location: 5005 Co Rd 82 SE, Alexandria, MN 56308

GRAIN CART

2014 Brent 1396, 1,350 bu., 22" front unload auger, 4-way hyd. spout adj., electronic scale, roll tarp, large 1000 PTO, 36" tracks, S/N B32970104; Location: 380 Atlantic Ave, Benson, MN 56215

PLANTER

2012 John Deere DB60, CCS planter, 24x30", XP row units, RowCommand, Ag Leader hyd. down pressure, hyd. drive variable rate, Martin-Fill floating row cleaners, 12V air compressor, liquid fertilizer in-furrow, John Blue ground drive fertilizer pump, flow gauges, 750 gal. poly tank, rear fill, (1) spiked closing wheel per row, Dig-Star scale for CCS tanks, hyd. markers, drawbar hitch, 31x16.5-15 flotation wing wheels, HD transport w/445/50R22.5 tires, S/N 1A0DB60ZHCAM750123;

Location: 505 4th Ave NE, Grand Meadow, MN 55936

VERTICAL TILLAGE

2019 John Deere 2660VT, 43' 6", 5-section fold, rock flex, 7-1/4" blade spacing, 20-1/2" ripple coulters, TruSet 0-12 degree gang angle adj., TruSet depth control, hyd. fore/aft, hyd. adj. knife edge & round bar rolling baskets, hyd. wing gauge wheels, walking tandems across, 445/50R22.5 main frame tires, 440/55R18 & 380/55R16.5 wing tires, S/N 1N02660VEK0780041;

Location: 505 4th Ave NE, Grand Meadow, MN 55936

SELF-PROPELLED SPRAYERS

2020 John Deere R4045, 1,547 eng. hrs., premium CommandView III cab, leather, buddy seat, ride control, 120' suspended boom, 1,200 gal. SS tank, ExactApply nozzle control, SS plumbing w/20" nozzle space, std. flow pump w/single flow meter, RH & LH fence front & side fill, BoomTrac Pro boom leveling system, integrated auto steer, 4600 processor, 10" Gen 4 display, AutoTrac, Section Control, RowSense, Data Sync & In-Field Data Sharing activations, rear camera, LED field light pkg., traction control, hyd. tread adj., fenders, Firestone IF380/105R50 tires, S/N 1N04045RCK0206003;

Location: 505 4th Ave NE, Grand Meadow, MN 55936

2019 John Deere R4045, 1,826 eng. hrs., premium CommandView III cab, heated & cooled leather, buddy seat, ride control, Agro King 120" carbon fiber suspended boom, 1,200 gal. SS tank, rinse tank, ExactApply nozzle control, 235 gal. Raven Sidekick Pro Direct Injection system, SS plumbing w/20" nozzle space, std. flow pump w/ single flow meter, RH & LH fence row nozzles, 3" side fill, BoomTrac Pro boom leveling system, integrated auto steer, 4600 processor, 10" Gen 4 display, AutoTrac, Section Control, RowSense, Data Sync & In-Field Data Sharing activations, rear camera, LED field light pkg., traction control, hyd. tread adj., fenders, Firestone IF380/105R50 tires, S/N 1N04045RCCJ0196393;

Location: 505 4th Ave NE, Grand Meadow, MN 55936

COMPACT WHEEL LOADER

2020 John Deere 324L, 1,297 hrs., CAH, ride control, electric quick coupler w/universal skid steer mounts, aux. hyd., self-leveling, rear hitch, 405/70R20 tires, S/N 1LJ324LXTZB058340;

Location: 13824 Lake Dr NE, Columbus, MN 55025

FORAGE HARVESTER & HEADS

2013 John Deere 7780, 2,253 cutter hrs., 3,407 eng. hrs., self-propelled forage chopper, PRWD, ProDrive, deluxe cab, buddy seat, advanced header controls, IntelliGuard, (40) knife cutter bars, rear hitch w/(1) hyd., (14) rear weights, rear fenders, kernel processor, 12v winch for kernel processor, Harvest Tec preservative applicator, ext. high arch spout, 2 spd. spout rotation, auto luber, diff lock, electric mirrors, 800/65R32 front tires, 600/65R28 rear tires, S/N 1Z07780YCDM513127;

Location: 11906 Hwy 14 E, St. Charles, MN 55972

2013 John Deere 690, self-propelled rotary forage chopper head, 25', 5-section hyd. fold, AHC, row guidance feelers, S/N 1KM0690GDD121347;

Location: 1140 Centre St, Sauk Centre, MN 56378

2002 John Deere 688, self-propelled rotary forage chopper head, 20', 3-section hyd. fold, AHC, S/N KM0688B101753;

Location: 1305 10th St, Turtle Lake, WI 54889



2019 JOHN DEERE 718C



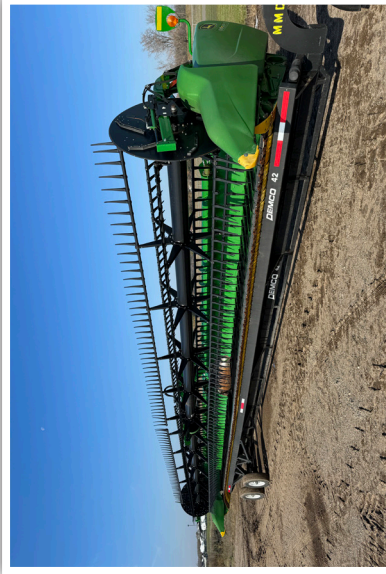
2020 JOHN DEERE 740FD



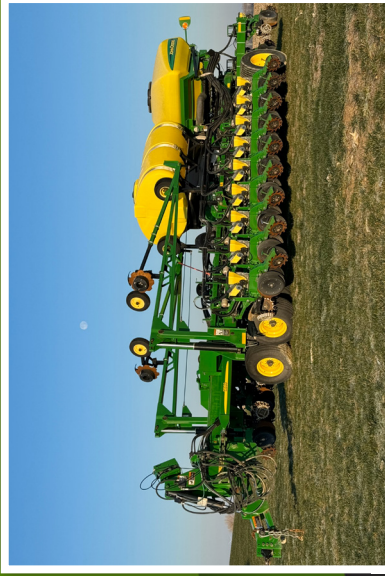
2020 JOHN DEERE 745FD



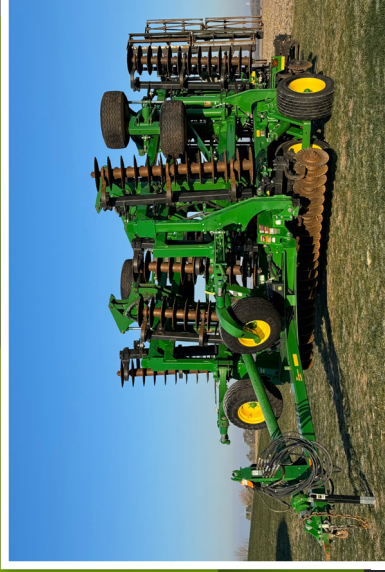
2019 JOHN DEERE 745FD



2017 JOHN DEERE 645FD



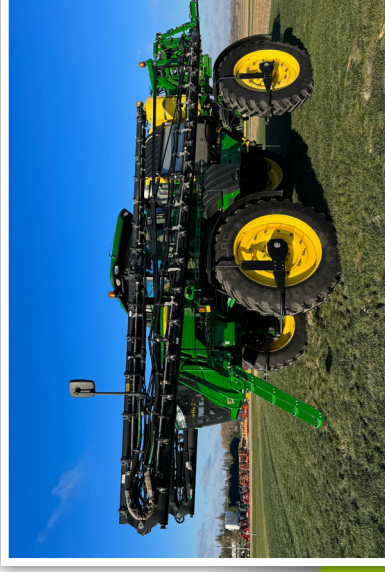
2012 JOHN DEERE DB60



2019 JOHN DEERE 2660VT



2020 JOHN DEERE R4045



2019 JOHN DEERE R4045



2020 JOHN DEERE 324L



Steffes Group, Inc.
2000 Main Ave E,
West Fargo, ND 58078



2013 JOHN DEERE 7780



2002 JOHN DEERE 688



PRESORTED
STANDARD
US POSTAGE
PAID
Permit #315
FARGO, ND

Minnesota
& Wisconsin

CLOSES: MONDAY, NOVEMBER 27 | 12PM CST 2023

AUCTION

TIMED ONLINE

MIDWEST MACHINERY COMPANY

See more photos at SteffesGroup.com

