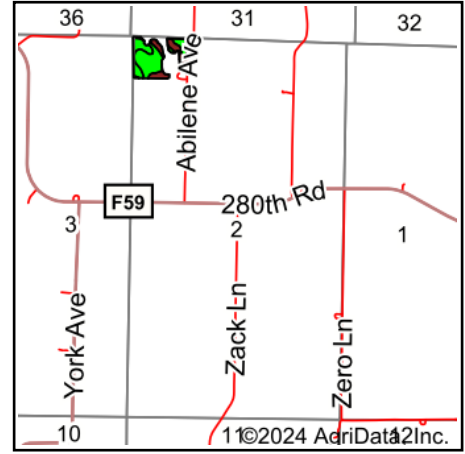
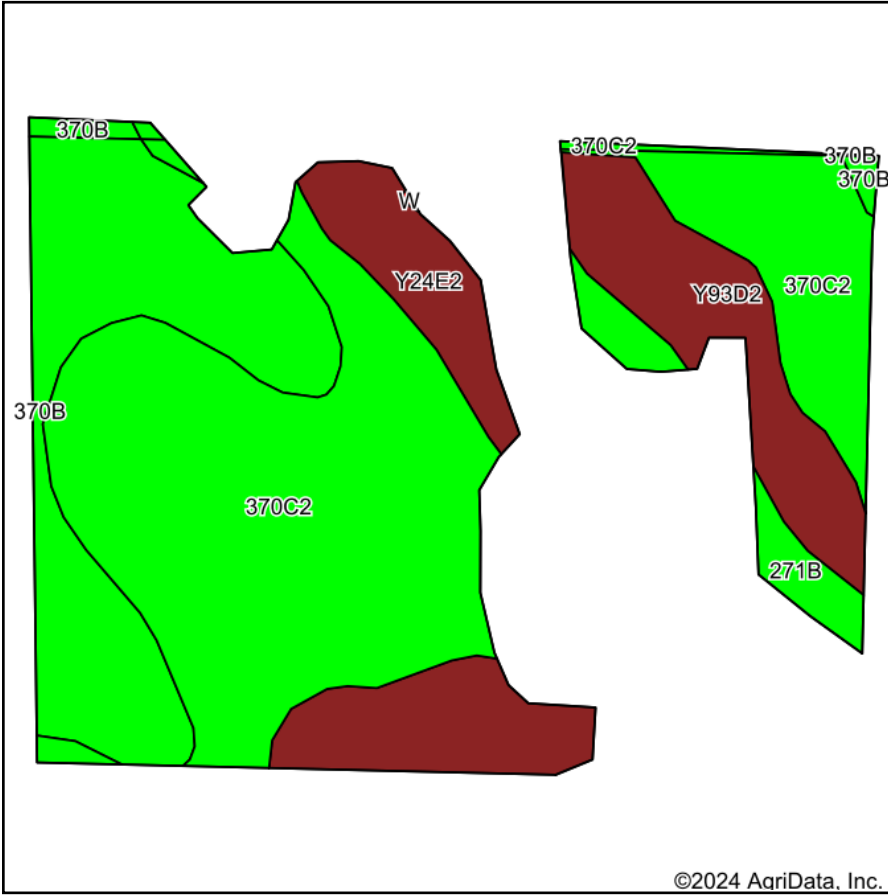


# Soils Map



State: **Iowa**  
 County: **Guthrie**  
 Location: **2-78N-30W**  
 Township: **Jackson**  
 Acres: **20.83**  
 Date: **9/13/2024**



Maps Provided By:  
  
 CUSTOMIZED ONLINE MAPPING  
 © AgriData, Inc. 2023 [www.AgriDataInc.com](http://www.AgriDataInc.com)



Soils data provided by USDA and NRCS.

Area Symbol: IA049, Soil Area Version: 30  
 Area Symbol: IA077, Soil Area Version: 32

Code	Soil Description	Acres	Percent of field	CSR2 Legend	Non-Irr Class *c	CSR2**	CSR	
370C2	Sharpsburg silty clay loam, 5 to 9 percent slopes, eroded	10.47	50.3%		IIIe	80	67	
370B	Sharpsburg silty clay loam, 2 to 5 percent slopes	4.42	21.2%		IIe	91	87	
Y24E2	Shelby clay loam, dissected till plain, 14 to 18 percent slopes, eroded	2.78	13.3%		IVe	35		
Y93D2	Shelby-Adair clay loams, dissected till plain, 9 to 14 percent slopes, eroded	2.23	10.7%		IIIe	35		
271B	Olmitz-Colo, occasionally flooded, complex, 0 to 5 percent slopes	0.72	3.5%		IIe	84		
370B	Sharpsburg silty clay loam, 2 to 5 percent slopes	0.11	0.5%		IIe	91	87	
370C2	Sharpsburg silty clay loam, 5 to 9 percent slopes, eroded	0.10	0.5%		IIIe	80	67	
<b>Weighted Average</b>						<b>2.88</b>	<b>71.7</b>	<b>*-</b>

\*\*IA has updated the CSR values for each county to CSR2.

\*- CSR weighted average cannot be calculated on the current soils data, use prior data version for csr values.

\*c: Using Capabilities Class Dominant Condition Aggregation Method